



# 512-B GREER ST.

515-B East Greer Street, Honea Path, SC 29654

**JACKSON WILLIAMSON**  
Associate  
864.376.4442  
jackson@mccoymwright.com

**BEN WILSON**  
Junior Associate  
864.642.2424  
ben@mccoymwright.com





**PROPERTY DESCRIPTION**

Available for Lease (\$1,100/month)

Welcome to 512 East Greer St. This +/-1,400 SF building is located on Honea Path `s most prominent corridor. Don`t miss your opportunity to run your business in a turn-key building with numerous offices and plenty of parking.

Contact Listing Brokers for Details.

**OFFERING SUMMARY**

Lease Rate:	\$1,100.00 per month (MG)
Available SF:	1,400 SF

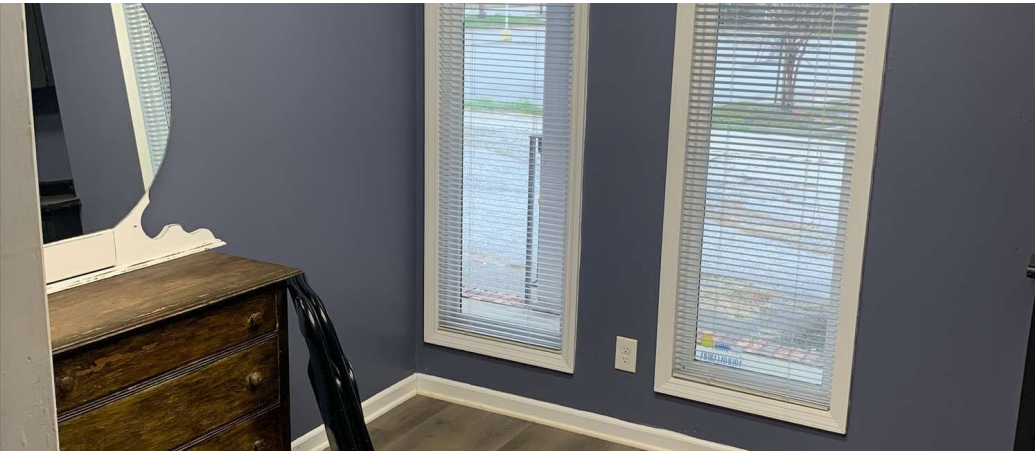
DEMOGRAPHICS	0.3 MILES	0.5 MILES	1 MILE
Total Households	138	348	1,148
Total Population	348	878	2,861
Average HH Income	\$54,578	\$56,405	\$68,325



Jackson Williamson, Associate | 864.376.4442 | jackson@mccoywright.com

Ben Wilson, Junior Associate | 864.642.2424 | ben@mccoywright.com

ADDITIONAL PHOTOS



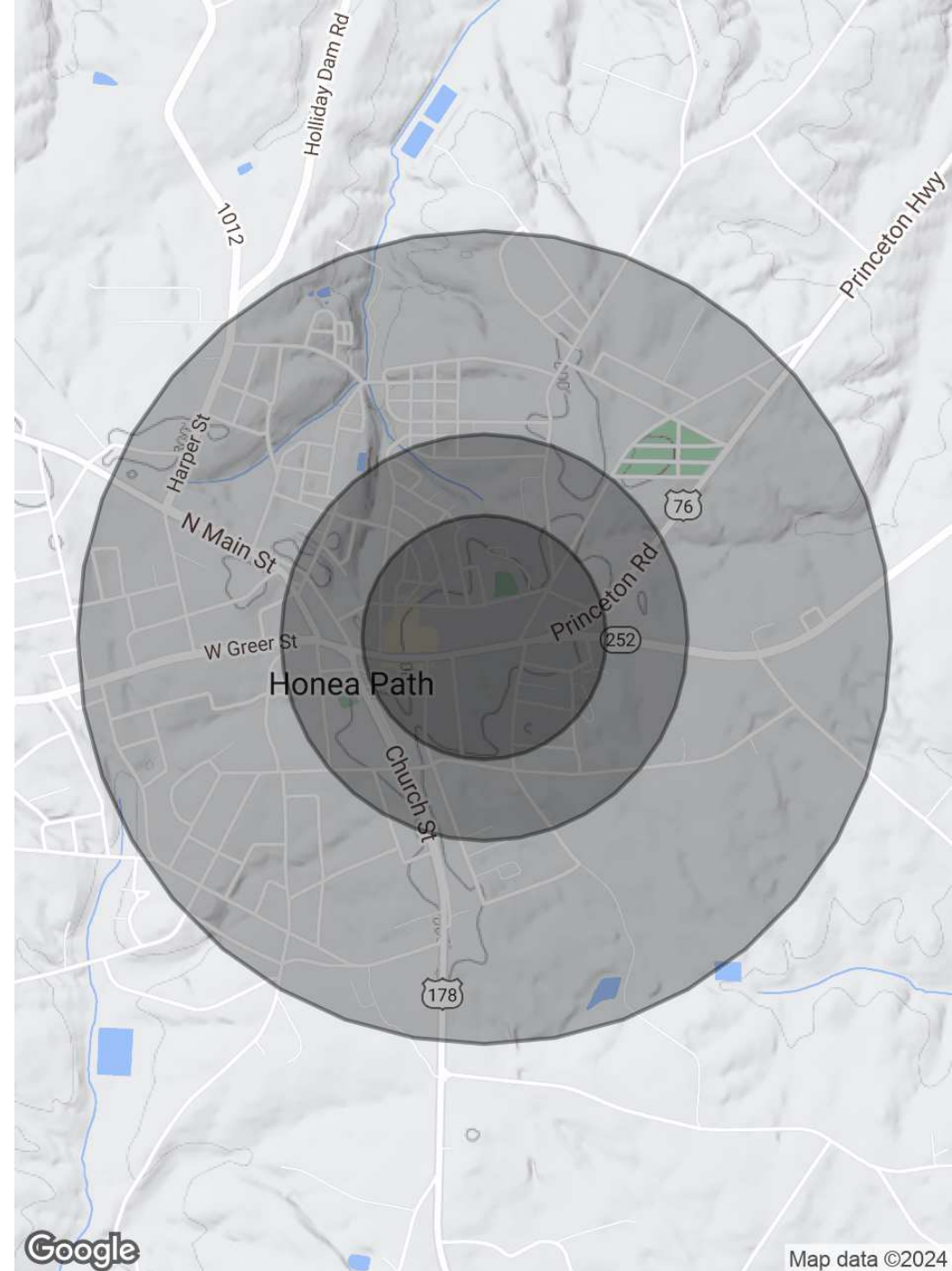
Jackson Williamson, Associate | 864.376.4442 | jackson@mccoyswright.com  
Ben Wilson, Junior Associate | 864.642.2424 | ben@mccoyswright.com

## DEMOGRAPHICS MAP & REPORT

POPULATION	0.3 MILES	0.5 MILES	1 MILE
Total Population	348	878	2,861
Average Age	38	38	40
Average Age (Male)	37	36	38
Average Age (Female)	40	40	42

HOUSEHOLDS & INCOME	0.3 MILES	0.5 MILES	1 MILE
Total Households	138	348	1,148
# of Persons per HH	2.5	2.5	2.5
Average HH Income	\$54,578	\$56,405	\$68,325
Average House Value	\$82,352	\$91,570	\$130,916

Demographics data derived from AlphaMap



Jackson Williamson, Associate | 864.376.4442 | jackson@mccoyswright.com

Ben Wilson, Junior Associate | 864.642.2424 | ben@mccoyswright.com



**JACKSON WILLIAMSON**

Associate

**Direct:** 864.376.4442  
jackson@mccoywright.com



**BEN WILSON**

Junior Associate

**Direct:** 864.642.2424 **Cell:** 864.617.2120  
ben@mccoywright.com



**Jackson Williamson**, Associate | 864.376.4442 | jackson@mccoywright.com  
**Ben Wilson**, Junior Associate | 864.642.2424 | ben@mccoywright.com