



FOR SALE 31± ACRES

**Kings Highway & Port Conway Road
King George, VA**



PROPERTY FEATURES:

- King George County's largest & newest planned development with over 440 units occupied and another 50 currently under construction of the 900 planned.
- Remaining 400 units to be built over the next 5 years
- Units priced from \$315 - \$400K
- Approximately 31 acres of retail designated land zoned C1 located in King George County, just minutes from Fredericksburg
- Located within the Hopyard Farm master-planned community containing approximately 1000 acres

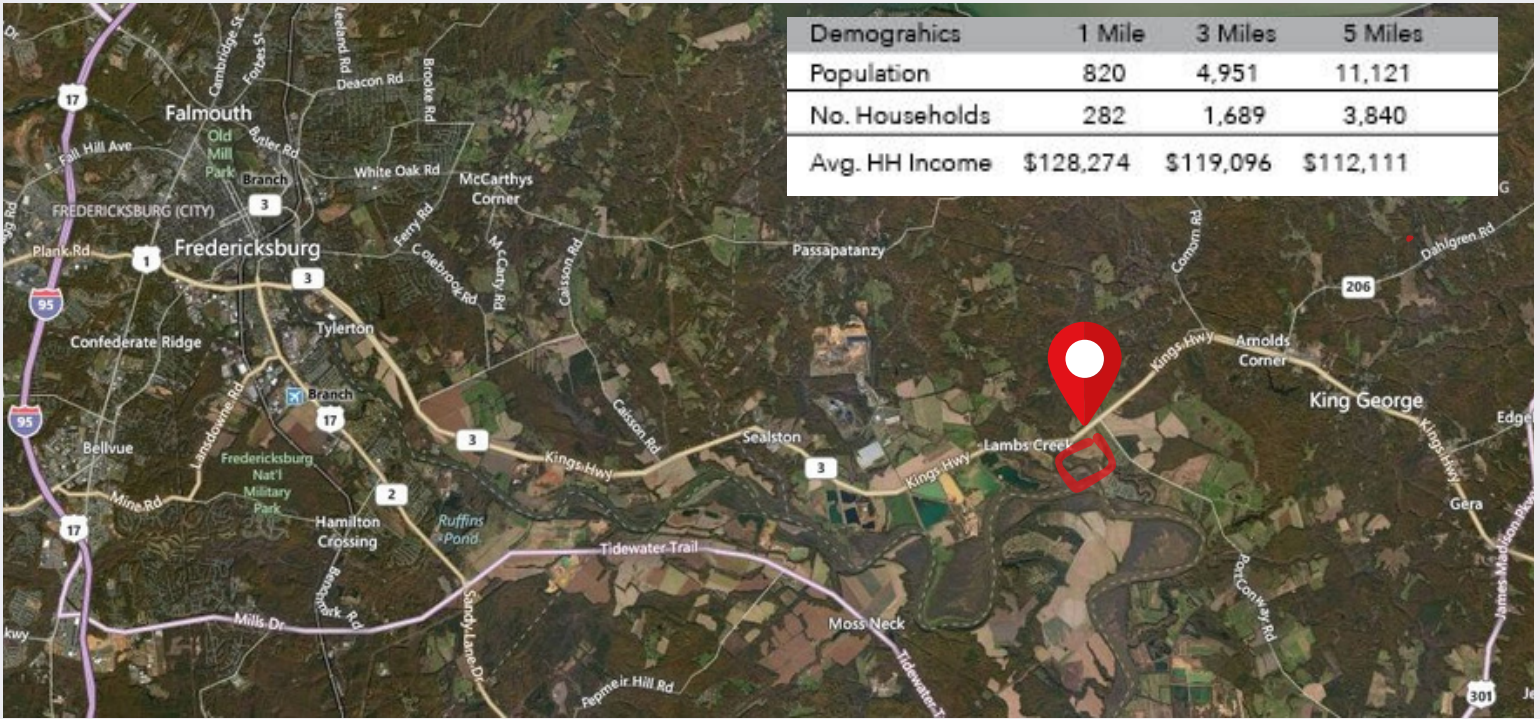
SPECIFICATIONS

Total Size	1,350,250 SF
Total Acres	31± Acres
Zoning	C1
Asking Price	\$2,250,000
Timing	Available now
Utilities	Public water & sewer

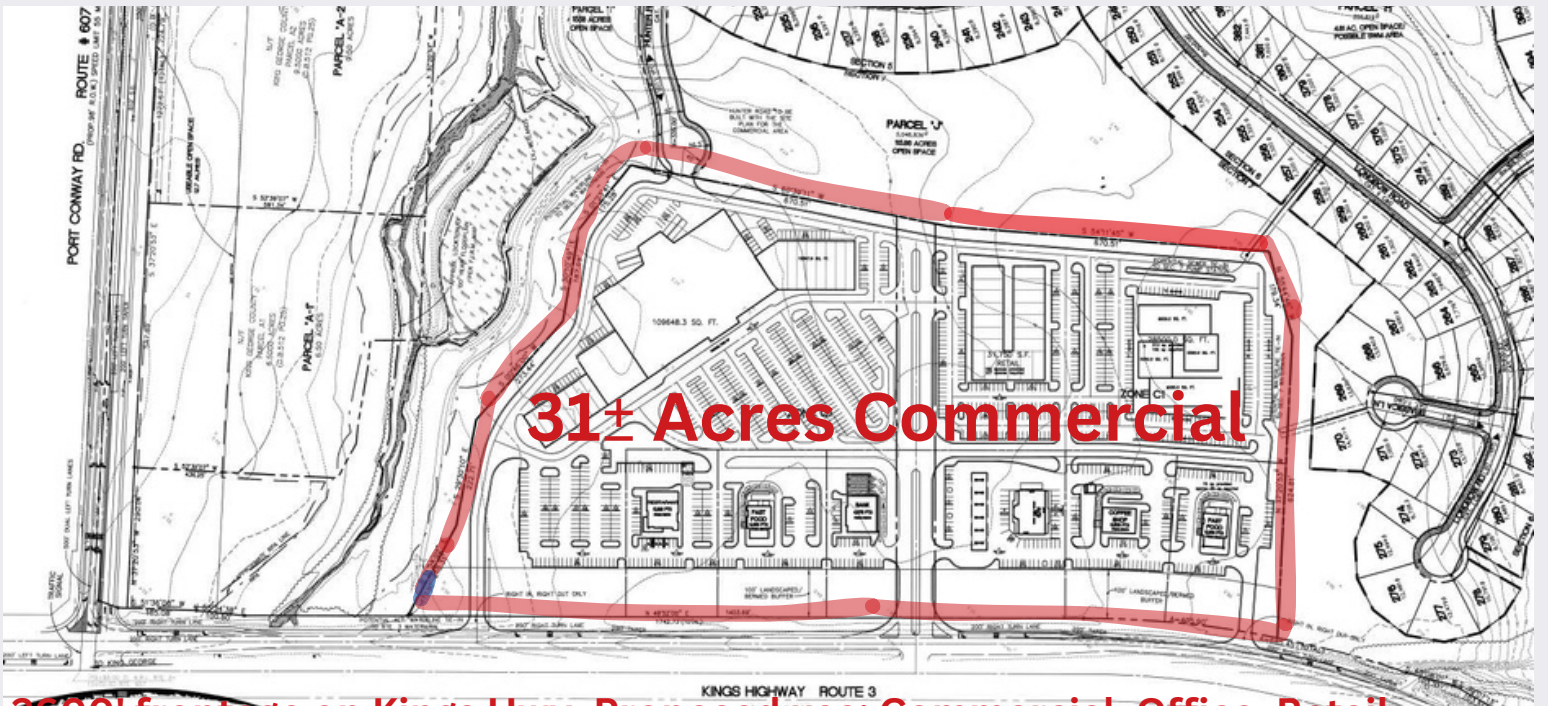


Phillip Baxter

(540) 847-2385 phillip.baxter62@gmail.com



Located within the Hopyard Farms community. Retail & office pad sites available.



2600' frontage on Kings Hwy, Proposed use: Commercial, Office, Retail



Phillip Baxter

(540) 847-2385 phillip.baxter62@gmail.com



Phillip Baxter

 (540) 847-2385  phillip.baxter62@gmail.com