



CENTENE PLAZA B



+/- 48,064 SF

7700 FORSYTH BOULEVARD | CLAYTON, MISSOURI 63105

A WORLD CLASS EXPERIENCE

Unmatched Amenities

From terrace dining to world-class facilities, wellness and cuisine, the LEED certified Centene Plaza B puts everything your workforce needs within convenient reach.





Superior Design

Designed with innovation in mind, Centene Plaza B is the seamless fusion of the most cutting-edge architectural achievements in sustainability, technology, and engineering.



Premier Location

Ideally located in the heart of vibrant downtown Clayton, Centene Plaza B offers unparalleled access to St. Louis' top chefs, hotels, businesses, and neighborhoods.





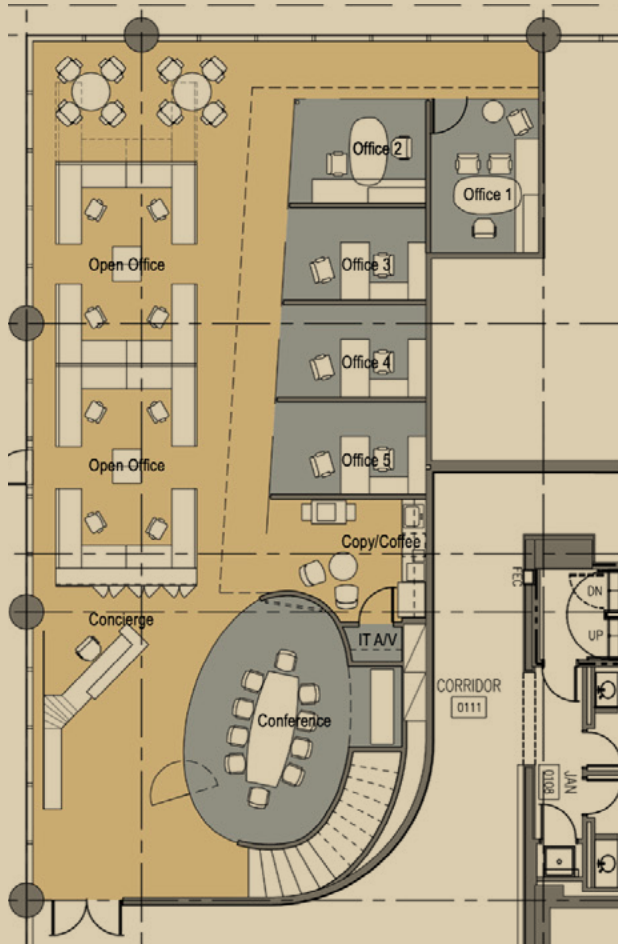
redefining workplace environment

- Parking Ratio: 4.0 per 1,000 SF
- Floor to ceiling glass providing maximum light & views
- Outdoor Plaza: Tree lined amenities plaza with fire pit & 60 foot long waterfall
- On-site full service cafe operated by Guckenheimer
- 270 seat auditorium
- On-site banking & ATM
- Numerous amenities within easywalking distance including restaurants, retail shops, banking & hotels
- On-site security

ASKING RATE: \$45.00/SF, FULL SERVICE

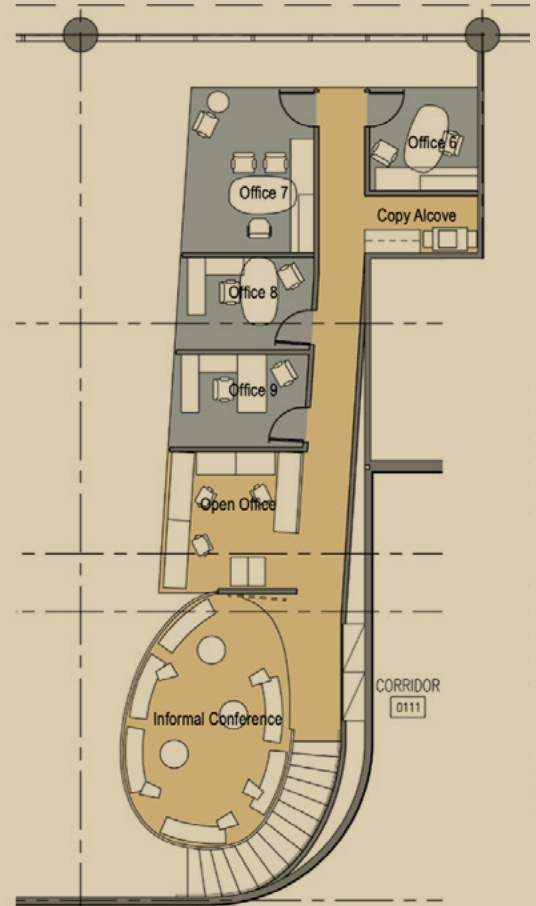
TAKING CLAYTON TO NEW HEIGHTS





1ST FLOOR

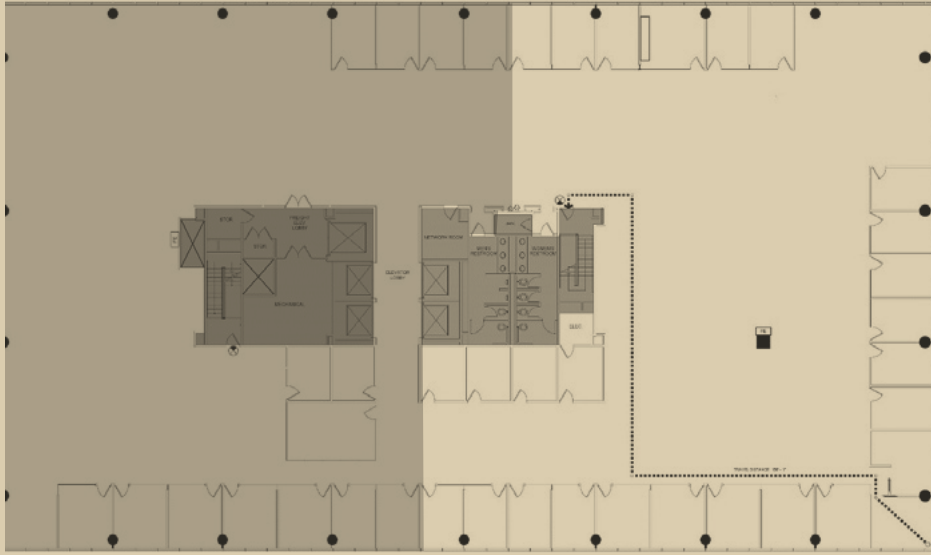
3,312 RSF
AVAILABLE



1ST FLOOR MEZZANINE

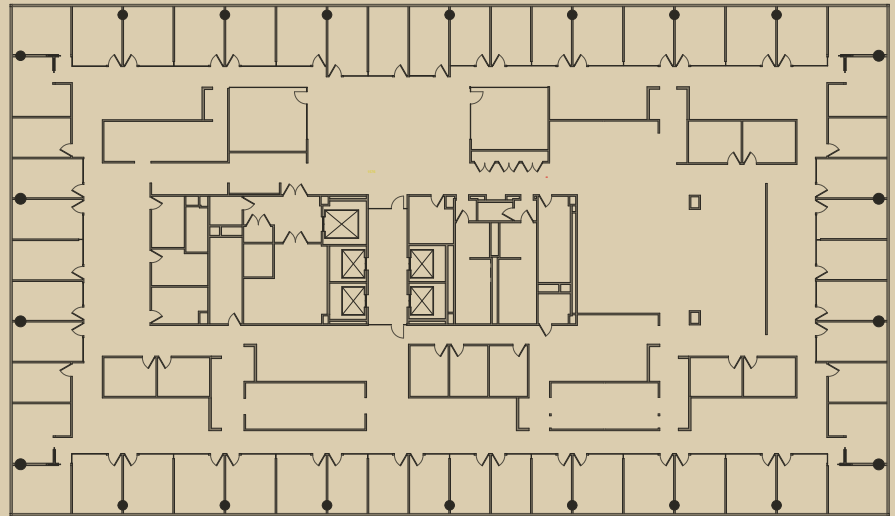
10TH FLOOR
1,799 RSF
AVAILABLE





14TH FLOOR
15,287 RSF
AVAILABLE

15TH FLOOR
27,666 RSF
AVAILABLE



EXCEPTIONAL RETAIL EXPERIENCE

Centene Plaza Campus features a pedestrian-friendly business district with open, public green spaces. Retail shops and innovative architecture and artwork create a unique setting in the heart of Clayton.





Building Retail



discover what it's like at the center of it all



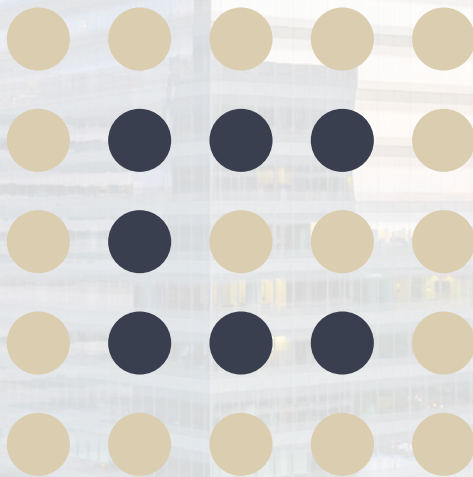


32 nearby
restaurants

6 nearby exercise
facilities & gyms

15 minutes to
airport

4 hotels in
walking distance



Jim Mosby
Vice Chair
314 746 0316
jim.mosby@cushwake.com

Danielle Grubbs
Senior Director
314 925 3175
danielle.grubbs@cushwake.com

Paddy Mullen
Senior Director
314 925 3178
paddy.mullen@cushwake.com



7700 Forsyth Blvd., Suite 1210
St. Louis, MO 63105
314 862 7100
cushmanwakefield.com