



For Lease
35,624 SF

3930 E Raines Rd
 Memphis, TN 38118

colliers.com/memphis

▶ [View Online](#)

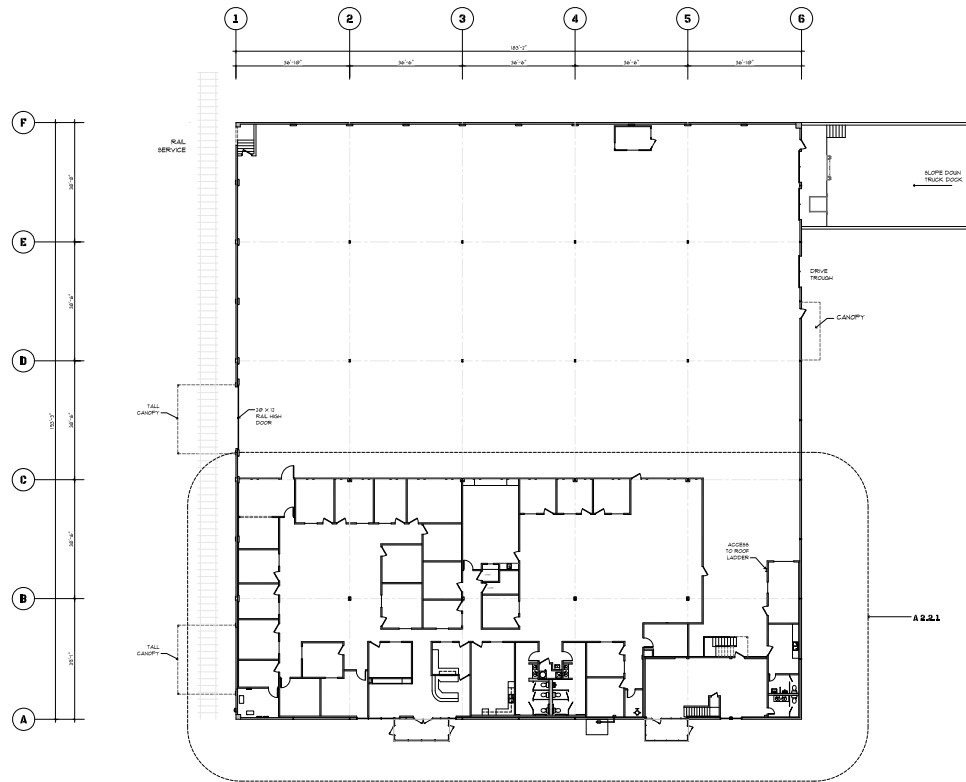
Brad Murchison
 Executive Vice President
 +1 901 412 6646 mobile
 brad.murchison@colliers.com

6363 Poplar Ave, Suite 220
 Memphis, TN 38119
 +1 901 375 4800
colliers.com/memphis



Accelerating success.





Property Specifications

Available	35,624 SF	Roof	built-up system
Site	2.81 acres	Bldg dimensions	183' x 193'
Building	Warehouse: 22,629 SF	Column spacing	36.5' x 38.5'
	Office: 12,995 SF	Dock-high doors	two (2)
	Total: 35,624 SF	Drive-in doors	one (1)
Year built	1970	Rail-high doors	one (1) 20' x 12'
Construction	masonry	Auto parking	30 existing + 82 proposed = 112 total
Clear height	20' 4"	Trailer parking	can be constructed
Sprinkler	wet system	Lighting	T-5

