

FOR LEASE:
RESTAURANT / RETAIL

411 SANSOME STREET

FINANCIAL DISTRICT



TCP
TOUCHSTONE
COMMERCIAL PARTNERS

AMZA
REAL
ESTATE

FOR LEASE: RESTAURANT / RETAIL

411 SANSOME STREET

For lease is the rare opportunity to take over an existing restaurant space in the heart of the Financial District. One block from the Transamerica Pyramid, 411 Sansome Street is in the center of it all. High density from office high rises leads to some of the highest daytime foot traffic in all of San Francisco. This can also be leased for a retail use.

ADDRESS	411 Sansome Street, San Francisco, CA 94111
AVAILABLE SPACE	3,269 Square Feet
RENTAL RATE	\$55 PSF Per Year, NNN
ZONING	C-3-0 - Downtown- Office
AVAILABLE	October 1, 2019

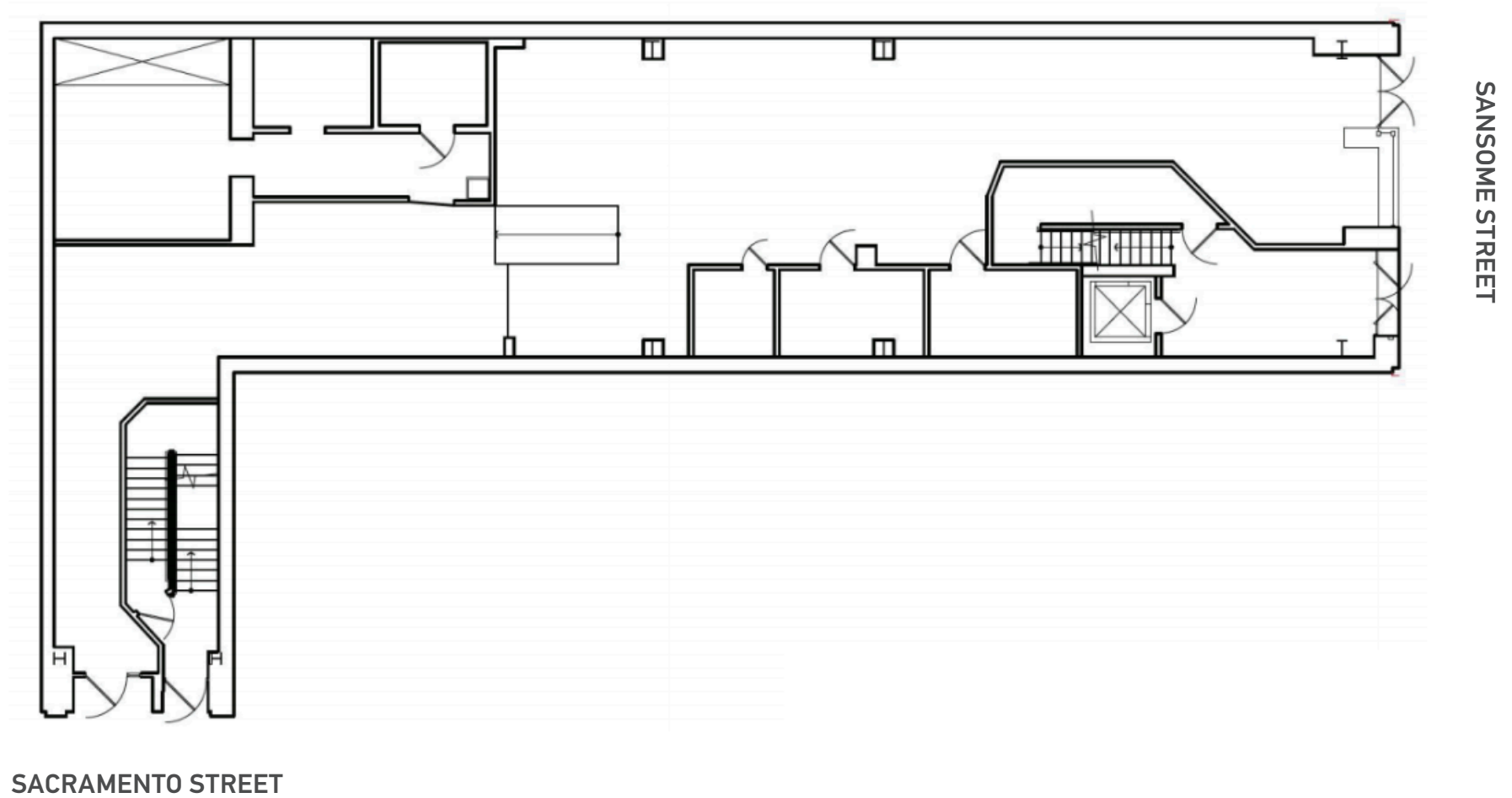
BUILDING ATTRIBUTES

- + Large Type 1 Hood
- + Full Restaurant Infrastructure
- + Two (2) Restrooms
- + Exposed Brick Walls
- + High Foot Traffic in Heart of FiDi
- + Signage Opportunities





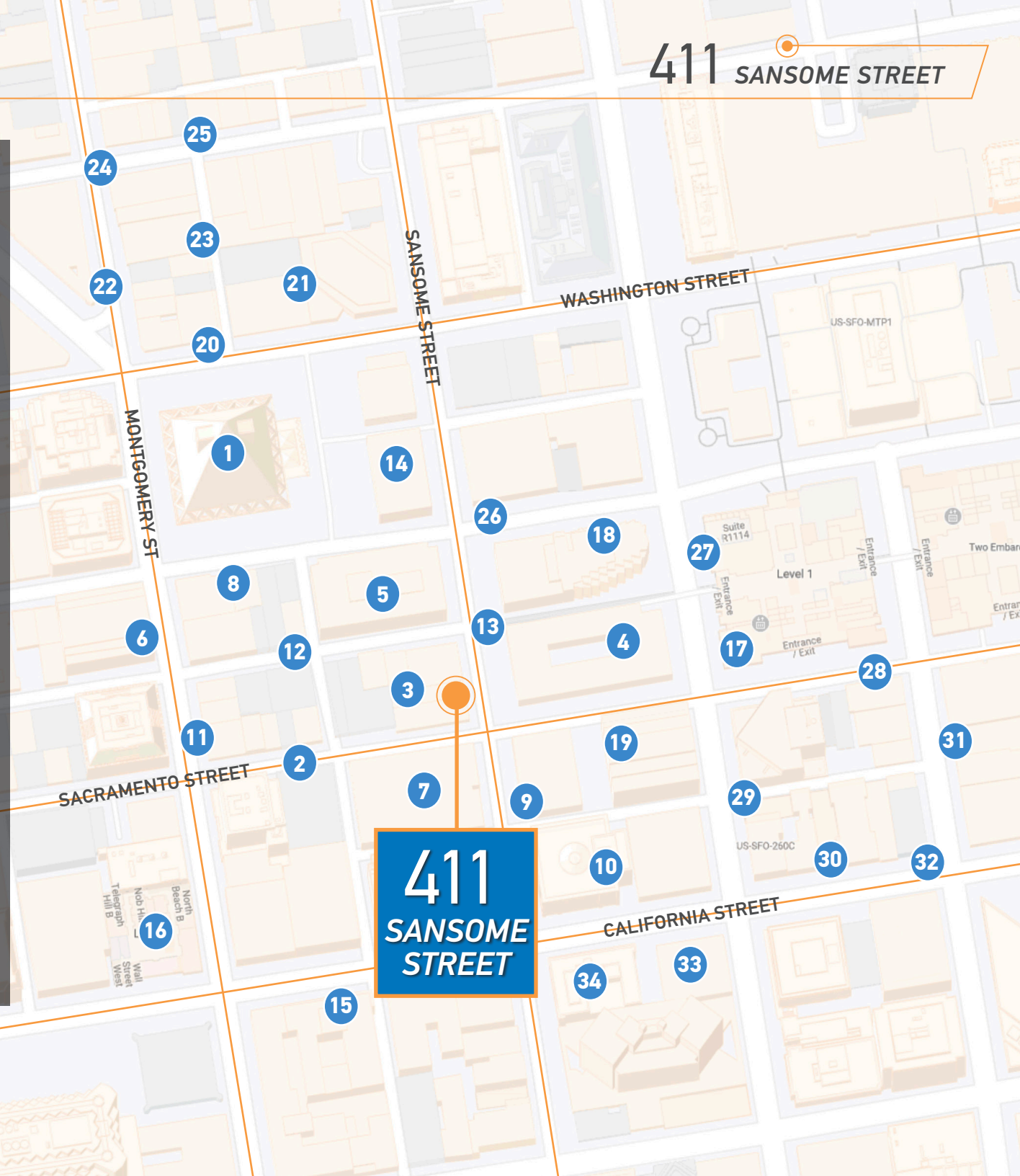
GROUND FLOOR



NEIGHBORHOOD ATTRIBUTES

411 SANSOME STREET

- 1 Transamerica Pyramid
- 2 Wayfare Tavern
- 3 The Barrel Room
- 4 Bentley Reserve
- 5 Sushirrito
- 6 Wingtip
- 7 Orangetheory Fitness
- 8 Starbucks
- 9 Planet Fitness
- 10 Proper Food
- 11 Leo's Oyster Bar
- 12 Sababa
- 13 Mixt
- 14 Illy Caffe
- 15 The Julia Morgan Ballroom
- 16 Omni San Francisco Hotel
- 17 Wheel House
- 18 Le Meridien San Francisco Hotel
- 19 Il Canto Cafe
- 20 Kusakabe
- 21 Verjus
- 22 Barbarossa Lounge
- 23 Shinola
- 24 Filson
- 25 Allbirds
- 26 Peets Coffee
- 27 Bar 333
- 28 Royal Exchange
- 29 Homegrown
- 30 Tadich Grill
- 31 Schroeder's
- 32 Perbacco
- 33 Newtree Cafe
- 34 CVS





SCHROEDER'S



TRANSAMERICA PYRAMID



WAYFARE TAVERN



LEO'S OYSTER BAR



KUSAKABE



JULIA MORGAN BALLROOM



BENTLEY RESERVE



SHINOLA

411 SANSOME STREET

TCP
TOUCHSTONE
COMMERCIAL PARTNERS
www.tcpre.com

JARON ELIOPOULOS

contact (415) 608-6336
jaron@tcpre.com
DRE # 01975155

AMZA
REAL
ESTATE

HELENA GENG

contact (408) 916-7536
helena@amzapartners.com
DRE # 01944859



411 SANSOME STREET