

**PORTA
& CO.**

Portland Retail Space For Lease

919 Congress Street | Portland, ME



Property Highlights

- 4,500± SF - 9,540± SF of retail space located next to Maine Medical Center.
- Prime location offering great visibility and signage opportunities.
- Directly across Congress Street from the MMC Expansion and where the new entrance is.
- Former Salvage BBQ.
- Ample off-street parking.
- Lease Rate: \$20.00/SF MG

PORTA & CO. | 30 Milk Street, Second Floor | Portland, ME 04101 | (207)-747-1515

www.portacompany.com

Property Details

919 Congress Street | Portland, ME 04101

PORTA
& CO.

Owner	East End Corp.
Available Space	9,540± SF
Parking	Ample on-site
Acres	0.11± AC
Signage	On building
Zoning	Transit-oriented development (TOD1)
Utilities	Municipal
HVAC	Gas fired heating & cooling
Electricity	400 amps
Lease Rate	\$20.00/SF MG

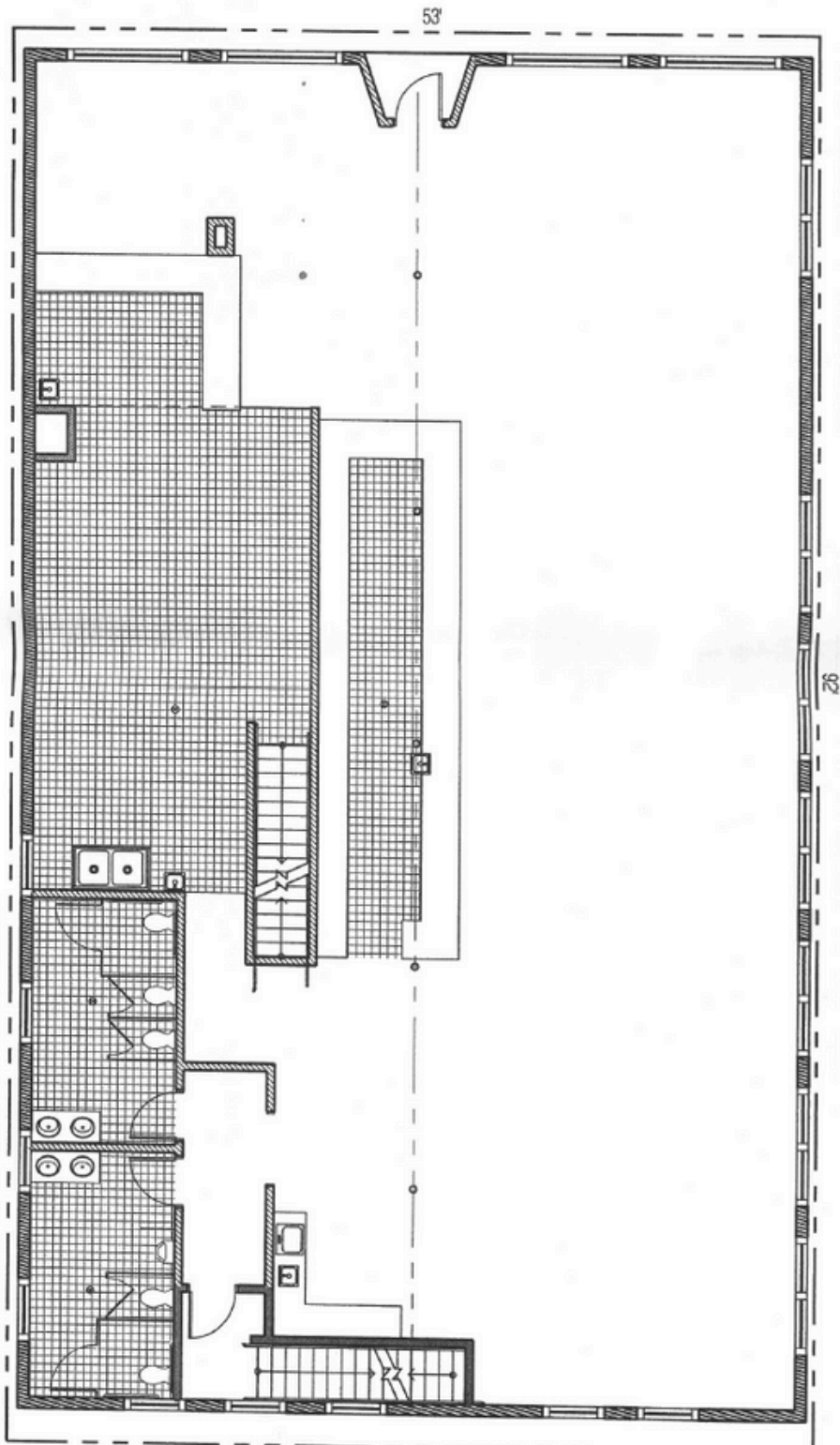




CONGRESS ST.

W.C.B. 06-6-08
CONGRESS ST. 919
PLAN 07-1-05
Scale 0.125"

SITE PLAN
1/8" = 1'-0"



GILMAN ST.

*First
Floor*

PORTA
& CO.

Photos

919 Congress Street | Portland, ME 04101





CONTACT



Mackenzie Simpson

Broker
c: 207-310-0221
o: 207-747-1515
msimpson@portacompany.com



Emmett Peoples

Associate
c: 207-400-4939
o: 207-747-1515
epeoples@portacompany.com

This information has been obtained from sources believed reliable and is intended for informational use only. The information contained herein has not been verified for accuracy or completeness. It is recommended that prospective tenants and buyers conduct their own inspection of the property and verify all information. Any reliance on this information is solely at your own risk. Photos herein are the property of their respective owners. Use of these images without the express written consent of the owner is prohibited.

PORTA & CO. | 30 Milk Street, Second Floor | Portland, ME 04101 | (207)-747-1515

www.portacompany.com