

FOR LEASE

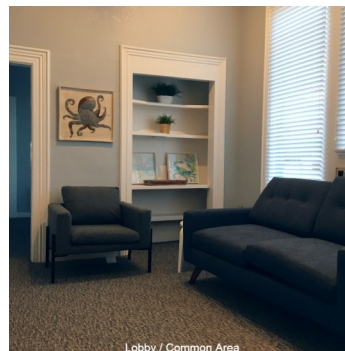
212 Laurel St. Santa Cruz, CA 95060



In demand private office suite space available in downtown Santa Cruz! 212 Laurel St is located just around the corner from Pacific Ave.

- ◆ La Ventura Professional Offices
- ◆ Second Floor Private Office Spaces
- ◆ Full Service Gross
- ◆ Downtown Santa Cruz
- ◆ New Décor
- ◆ Walkable
- ◆ Bikeable
- ◆ Common Bathroom, Kitchen, Waiting Area
- ◆ Shops, Dining, Metro Nearby

www.davis-propertygroup.com



Davis Property Group

831-724-2343

info@davis-propertygroup.com

DRE: 01456899