

# 11 NEWBURY STREET

## BACK BAY, BOSTON MA



### PROPERTY INFORMATION

Full floor identity in this prime location on the sunny side of the first block of Newbury Street, between Arlington Street and Berkeley Street adjacent to The Newbury Hotel, steps to the Boston Garden and a half a block from the Arlington T stop. This rarely available 3rd floor in the building has 30 feet of frontage with six windows overlooking Newbury Street, with high ceilings and an open floor plan.

### LEASING OPPORTUNITY

Size: 2,000 RSF

Floor: 3rd Floor

Available: Immediately

Term: 5-10 Years



**COLDWELL BANKER  
COMMERCIAL**

## BUILDING INFORMATION

## Neighborhood Amenities

- Luxury Retail Shops
- Fine Dining and Restaurants
- Public Garden, Esplanade
- Charles River
- Excellent Public Transportation

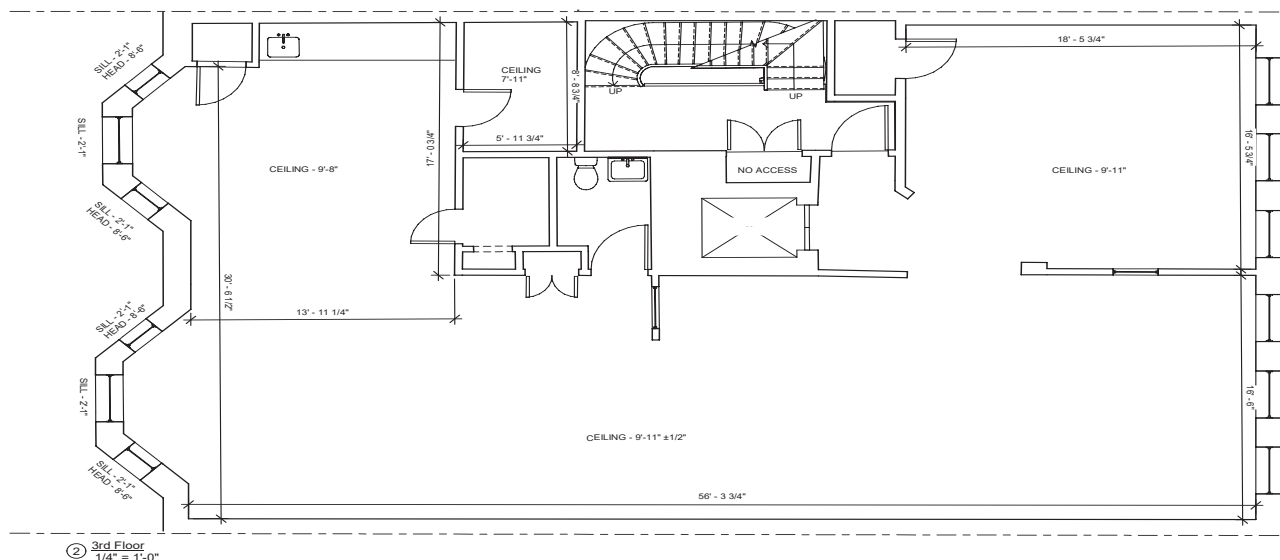
## Commuter and Walker's Paradise

- Steps from the Arlington Street Green Line T station
- Easy access to all major highways I-90 and I-93

## Notable Neighbors

- Rolex, Chanel, Patek Philippe, Breitling, Concepts, Cartier, Loro Piana, Zegna, Valentino
- The Newbury Hotel, The Four Seasons Hotel, and the Public Garden
- A block from fast casual food Tatte, Life Alive, and Cafe Nero

## FLOOR PLAN



## CONTACT

Tom Brennan -- Investment Sales and Commercial Leasing Specialist

(617) 974 0790

tom.brennan@cbrealty.com