

13235 Southwest Hwy., Orland Park, IL

Available: 32,885 SF



Immediate Availability

FOR LEASE: Renovated 32,885 SF Maintenance/Parking Facility

BUILDING SIZE: 32,885 SF

OFFICE: +/- 3,500 SF

SITE SIZE: 5.21 Acres

YEAR BUILT: 1990 (Renovated 2023)

LOADING: 10 Drive-In Doors

CLEAR HEIGHT: 18.5'

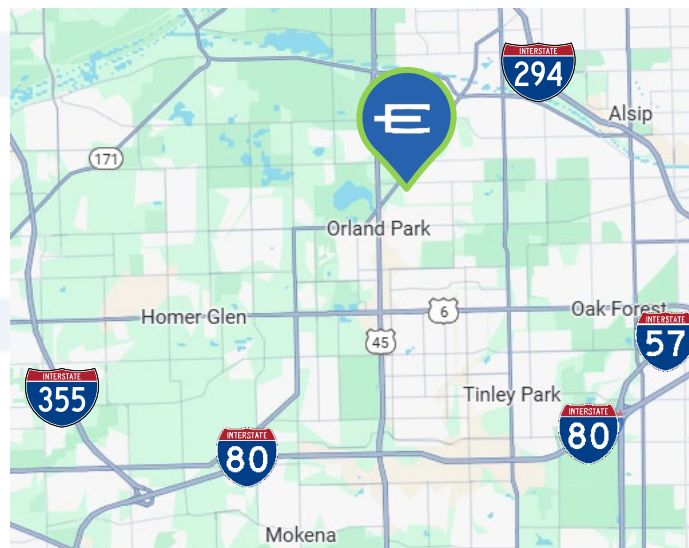
POWER: Heavy

TRAILER PARKING: Ample

INSURANCE: \$0.23 PSF

RE TAXES: \$2.95 PSF

LEASE RATE: Subject to Offer



**ENTRE**  
Commercial Realty LLC

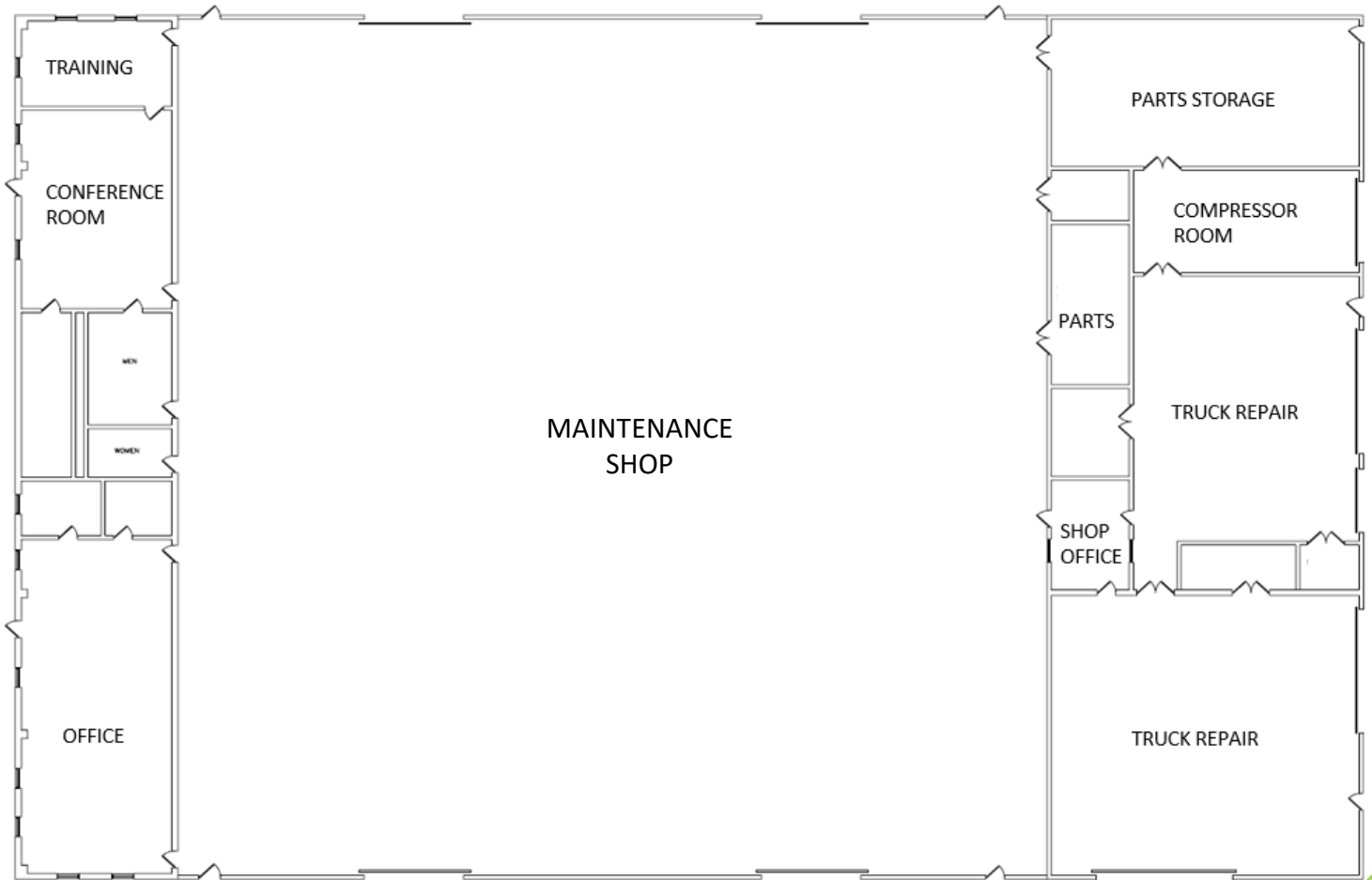
Mike DeSerto  
224-588-3026  
mdeserto@entreccommercial.com

Cory Kay  
224-532-2497  
ckay@entreccommercial.com

Chris Wilbur  
708-860-8589  
cwilbur@entreccommercial.com

Elisabeth Lazzara  
847-310-4209  
elazzara@entreccommercial.com

# SITE PLAN



## Facility Highlights



**Drive-Through  
Bays**



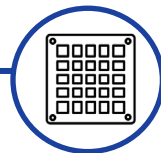
**Turnkey  
Maintenance  
Facility**



**Fenced Trailer Lot**



**Outside Storage  
Permitted**



**Floor Drains**

**ENTRE**  
Commercial Realty LLC

Mike DeSerto  
224-588-3026  
[mdeserto@entreccommercial.com](mailto:mdeserto@entreccommercial.com)

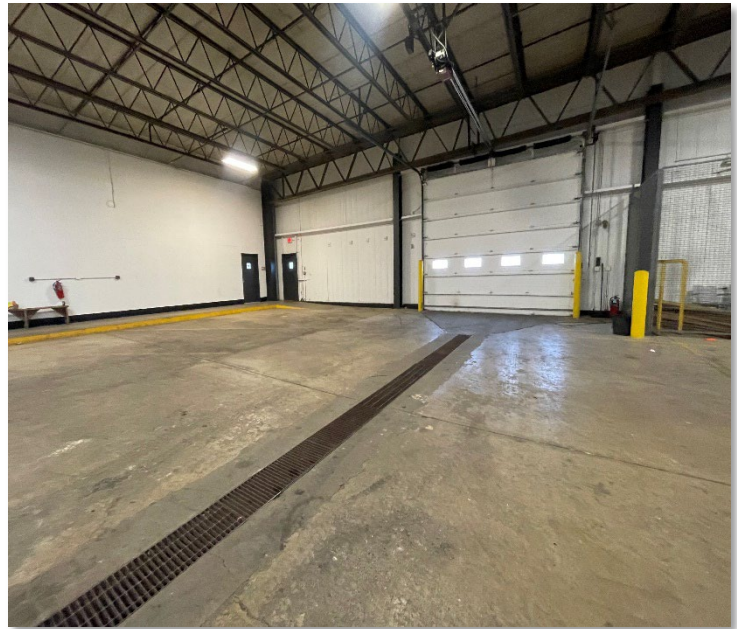
Cory Kay  
224-532-2497  
[ckay@entreccommercial.com](mailto:ckay@entreccommercial.com)

Chris Wilbur  
708-860-8589  
[cwilbur@entreccommercial.com](mailto:cwilbur@entreccommercial.com)

Elisabeth Lazzara  
847-310-4209  
[elazzara@entreccommercial.com](mailto:elazzara@entreccommercial.com)



# Interior Photos



**ENTRE**  
Commercial Realty LLC

Mike DeSerto  
224-588-3026  
[mdeserto@entrecommercial.com](mailto:mdeserto@entrecommercial.com)

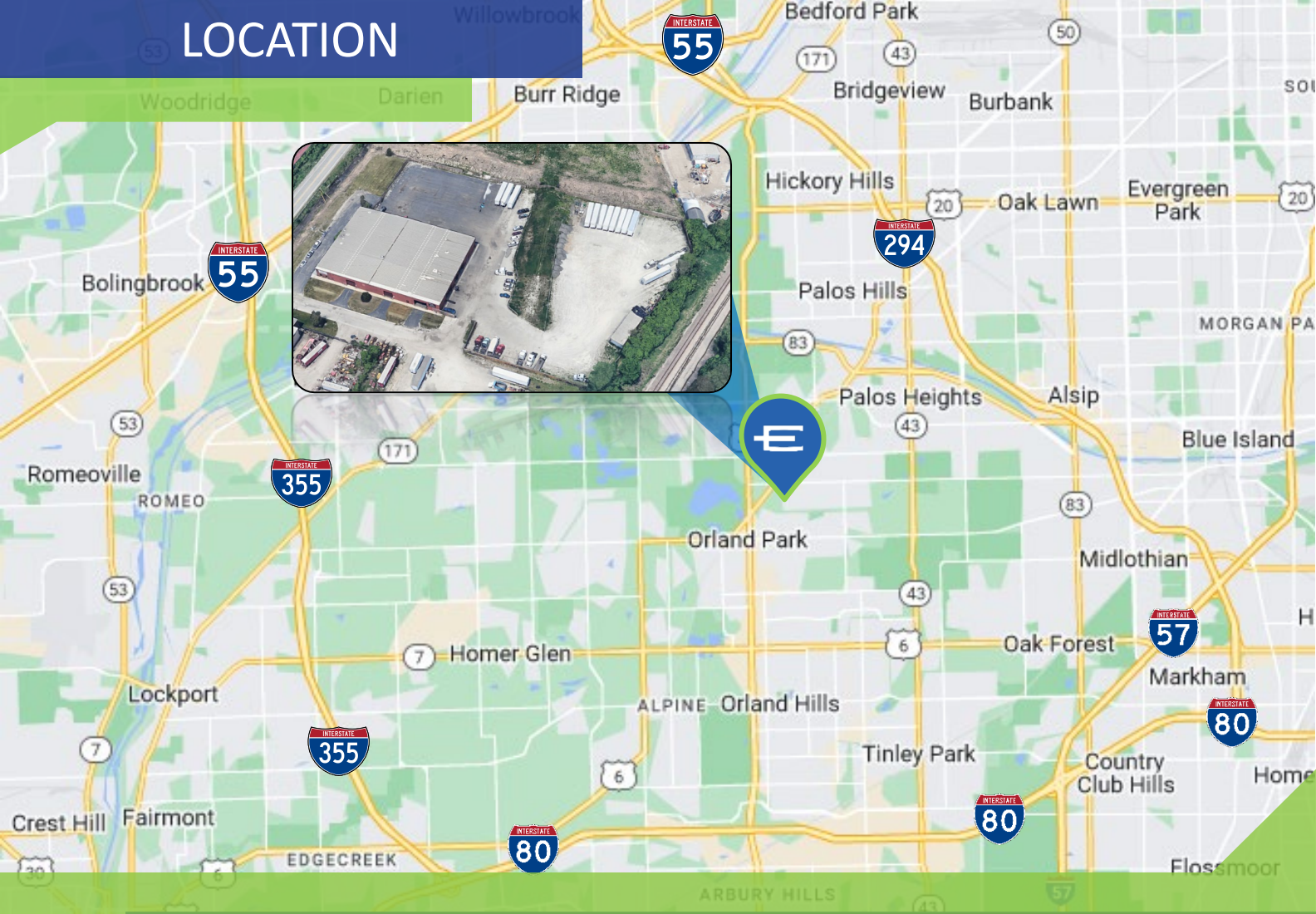
Cory Kay  
224-532-2497  
[ckay@entrecommercial.com](mailto:ckay@entrecommercial.com)

Chris Wilbur  
708-860-8589  
[cwilbur@entrecommercial.com](mailto:cwilbur@entrecommercial.com)

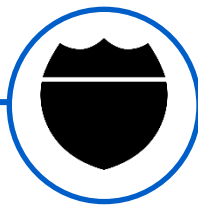
Elisabeth Lazzara  
847-310-4209  
[elazzara@entrecommercial.com](mailto:elazzara@entrecommercial.com)



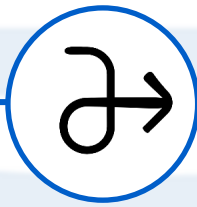
# LOCATION



SCAN FOR MAP VIEW



**Interstate Access to  
I-80, I-57, I-294, I-355, & I-55**



**Direct Entrance  
Off SW HWY**



**High Density Local  
Workforce**

**ENTRE**  
Commercial Realty LLC

[www.entrecommercial.com](http://www.entrecommercial.com)

3550 Salt Creek Lane, Suite 104, Arlington Heights, IL, 60005