

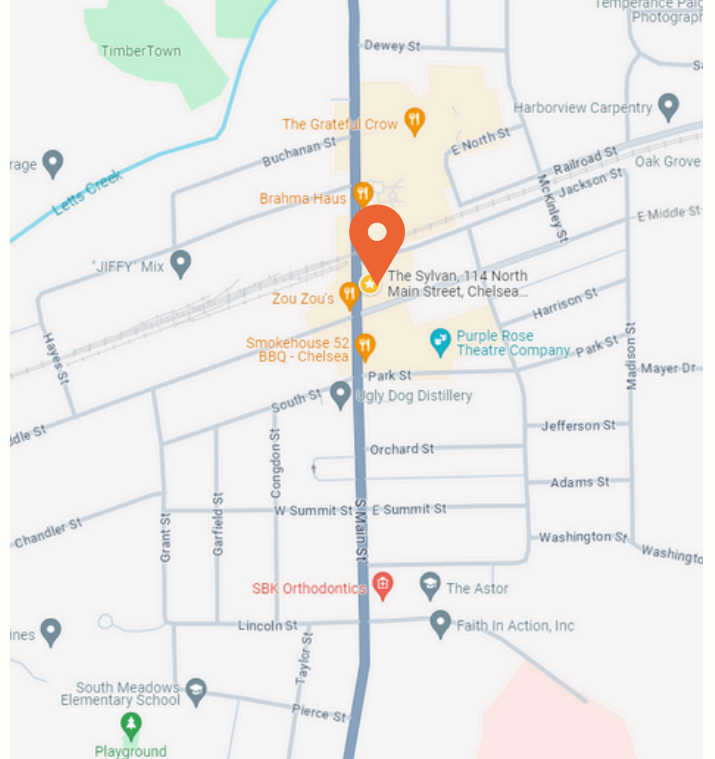


COMMERCIAL
real property, real value.

The Sylvan

114 N Main St. Chelsea, MI 481118

Retail - Office for Lease // Summary



OFFERING SUMMARY

- LEASE RATE:** \$19.5 PSF (MG)
- AVAILABLE SF:** 823 SF
- ZONING:** DT- DOWNTOWN
- PARKING:** STREET

LOCATION OVERVIEW

Experience the convenience and vibrancy of downtown Chelsea living with prime retail and office spaces at The Sylvan, offering walkability to nearby restaurants and shops alongside a supportive community atmosphere.

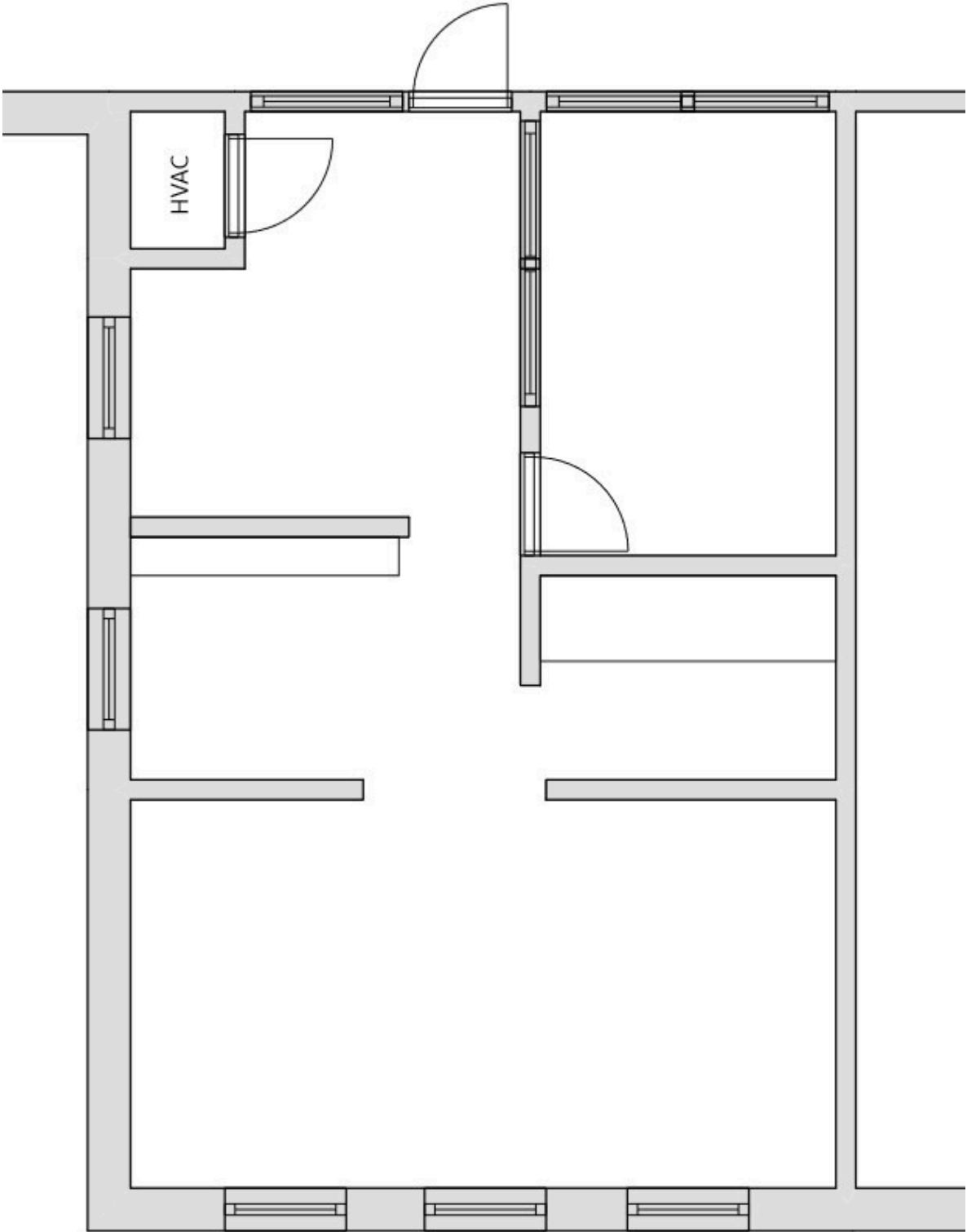
FOR LEASE

SPACES	RATE	SIZE
SUITE 10	\$19.5 (MG)	823 SF

The Sylvan

114 N Main St. Chelsea, MI 48118

Office for Lease // Suite 10 Floorplan



The Sylvan

114 N Main St. Chelsea, MI 48118

Office - Retail for Lease // Virtually Furnished



The Sylvan

114 N Main St. Chelsea, MI 48118

Office - Retail for Lease // Suite Photos



The Sylvan

114 N Main St. Chelsea, MI 48118

Office - Retail for Lease // **Contact**



TYLER BURGOON

Broker / Operations Director

tyler@jpcommercialre.com
office 734 994 8800
cell 734 730 5633



JP COMMERCIAL REAL ESTATE (JPCRE) DOES NOT MAKE ANY REPRESENTATIONS OR WARRANTIES, EXPRESS OR IMPLIED, AS TO THE ACCURACY OR COMPLETENESS OF THE INFORMATION CONTAINED HEREIN, AND NOTHING CONTAINED HEREIN IS OR SHALL BE RELIED UPON AS A PROMISE OR REPRESENTATION AS TO THE FUTURE REPRESENTATION OF THE PROPERTY. THIS MAY INCLUDE CERTAIN STATEMENTS AND ESTIMATES WITH RESPECT TO THE PROPERTY. JPCRE DISCLAIMS ANY AND ALL LIABILITY FOR REPRESENTATIONS OR WARRANTIES, EXPRESSED OR IMPLIED, CONTAINED IN OR OMITTED INFORMATION. THE INFORMATION CONTAINED HEREIN IS SUBJECT TO CHANGE WITHOUT NOTICE AND THE RECIPIENT OF THESE MATERIALS SHALL NOT LOOK TO JPCRE OR THE JPCRE ADVISOR NOR ANY OF THEIR OFFICERS, EMPLOYEES, REPRESENTATIVES, INDEPENDENT CONTRACTORS OR AFFILIATES, FOR THE ACCURACY OR COMPLETENESS THEREOF.

