

EAST BIG BEAR LAKE BOULEVARD

NEW PROPERTY LINE

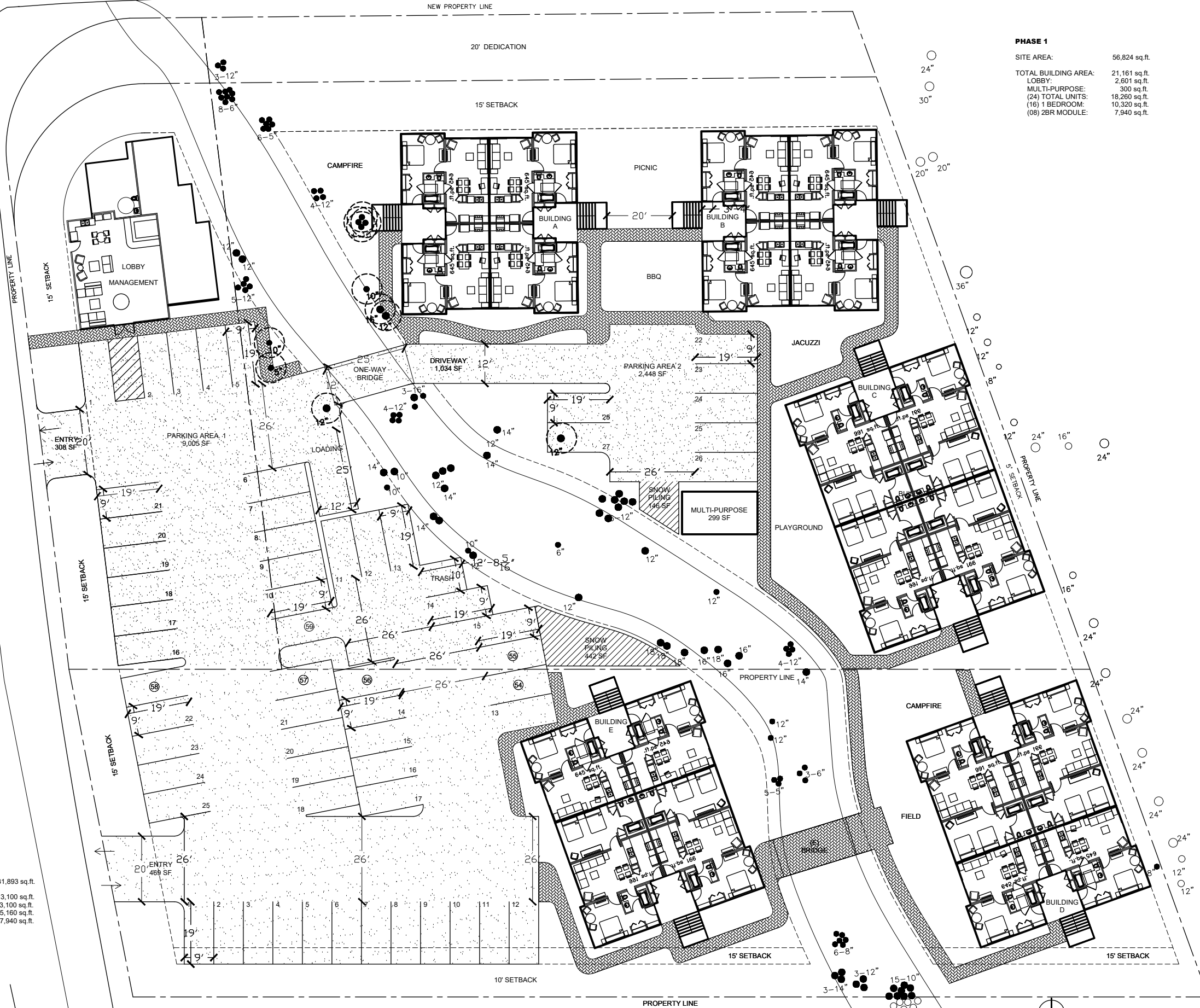
20' DEDICATION

15' SETBACK

PHASE 1

SITE AREA: 56,824 sq.ft.
 TOTAL BUILDING AREA: 21,181 sq.ft.
 LOBBY: 2,801 sq.ft.
 MULTI-PURPOSE: 300 sq.ft.
 (24) TOTAL UNITS: 18,260 sq.ft.
 (16) 1 BEDROOM: 10,320 sq.ft.
 (08) 2BR MODULE: 7,940 sq.ft.

TULIP ROAD



PHASE 2

SITE AREA: 31,893 sq.ft.
 TOTAL BUILDING AREA: 13,100 sq.ft.
 (08) TOTAL UNITS: 13,100 sq.ft.
 (04) 1 BEDROOM: 5,160 sq.ft.
 (04) 2 BEDROOM: 7,940 sq.ft.