

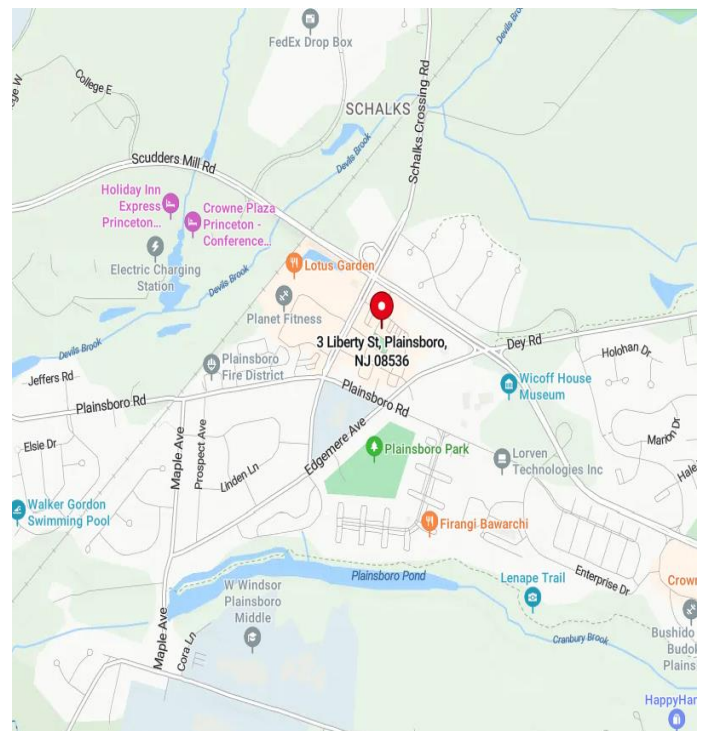


## Plainsboro New Downtown

3 Liberty Street, Bldgs 10&11, Plainsboro, NJ 08536

### 3<sup>rd</sup> Floor Units available for Sale

- **Suite 1031: 1,156 SF \$195/SF** (Shell Space)
  - **Suite 1032: 2,029 SF \$255/SF** (Investment Condo; tenant included)
  - **Suite 1034: 1,285 SF \$195/SF** (Shell Space)
  - **Suite 1036: 1,600 SF \$195/SF** (Shell Space)
  - **Suite 1037: 2,147 SF \$195/SF** (Shell Space)
  - **Suite 1038: 1,783 SF \$255/SF** (Built out medical unit)
- Private elevator Entrance in Mixed-Use Office Condos within Town Center Development
  - 30,000 SF 3-Story Building Built 2011
  - Landlord Work letter: Negotiable
  - 2 Elevators
  - Sprinklers: Full Wet Systems
  - Convenient to Rt. 1, Rt. 130 & NJTPK Exit 8A
  - Close to University Medical Center's new hospital
  - Join our tenants: Princeton Medical Group, MD4Kids and Jersey Physical Therapy



For more information:

**Gerard Fennelly**

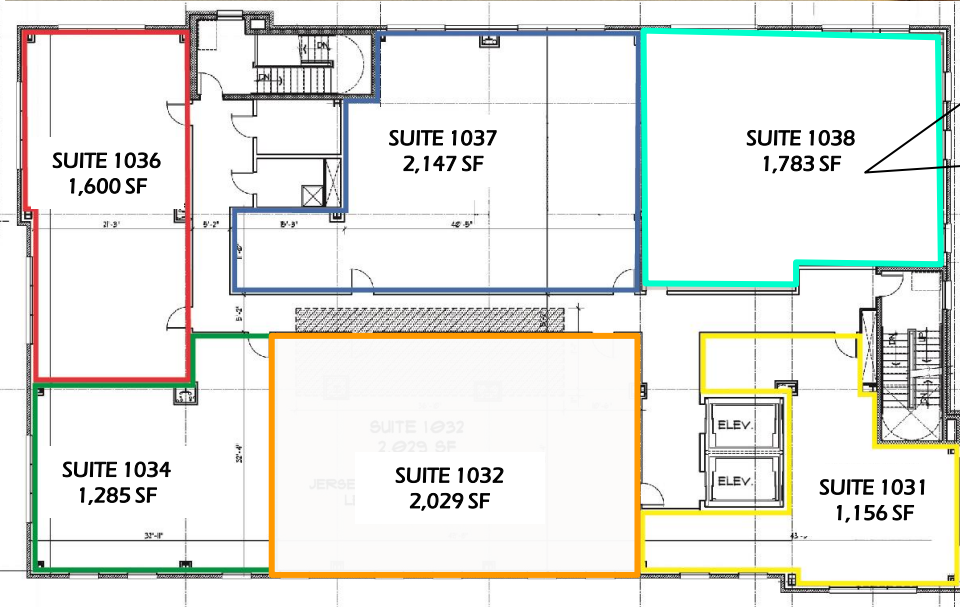
**Matthew Fennelly**

The information contained herein has been given to us by the owner of the property or other sources we deem reliable. We have no reason to doubt its accuracy, but we do not guarantee it. All information should be verified prior to purchase or lease.

# For Sale

10,000 SF Office / Medical Condos

Plainsboro New Downtown  
3 Liberty Street, Buildings 10 & 11  
Plainsboro, NJ 08536



### Suite 1038, 3rd Floor 1,783 SF Medical Space

- 5 Exam Rooms
- 1 private Office
- Waiting/Reception
- 1 Bathroom

Situated within a newly constructed Village Center consisting of 9 buildings which provide a combination of Office, Retail, and Medical uses.

