

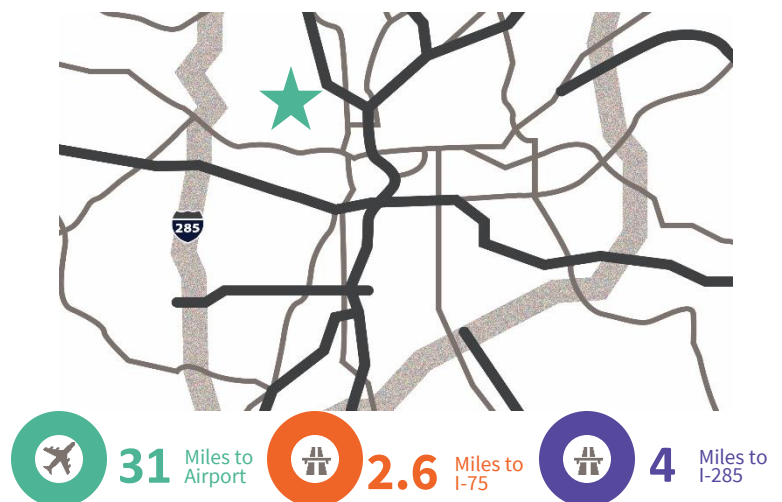


6540 Peachtree Industrial Blvd., Ste B, Norcross, GA

Opportunity

- 13,731 sf available
- 707 sf office space
- 54,700 total building size
- 22'6" clear height
- 50'8" x 39'10" bay size
- 200' Bldg. Depth
- 4 (8x10) DH, 1 DI
- Fenced outside storage

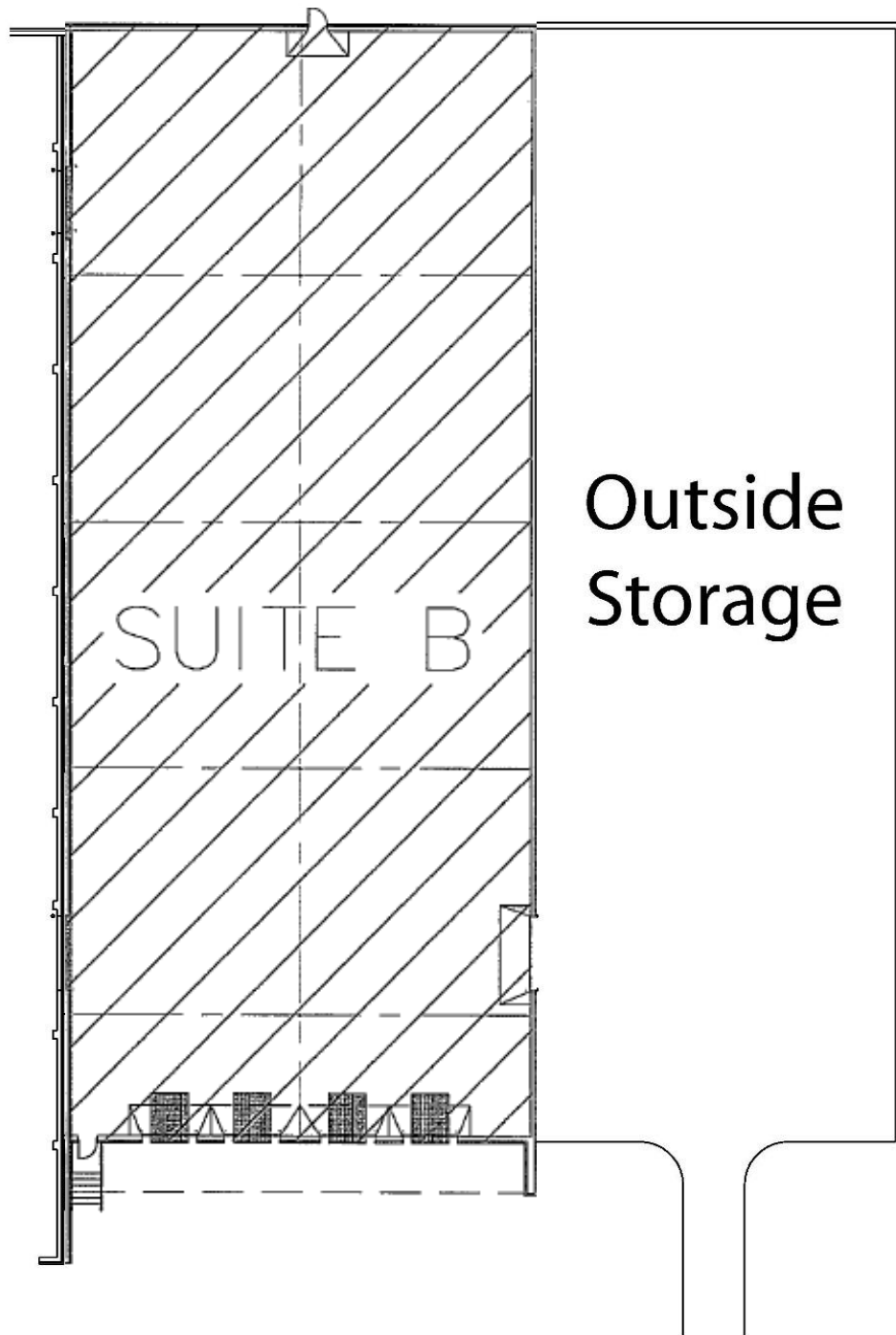
Location



**For further
information**

Chet Koenig
Principal
+1 770 916 6130

avisonyoung.com



For further information



Chet Koenig
Principal
+1 770 916 6130
chet.koenig@avisonyoung.com

Owned by:

