



Knapp's Centre

300 S Washington Sq
Lansing, Michigan 48933

Property Highlights

- Historic Knapp's Centre completely renovated in 2014
- Space from 1,722 SF up to 16,000 SF available
- Gorgeous atrium fills the center of the building with natural light
- Luxury finishes throughout
- Just a block and a half from the Capitol
- Join the resurgent Washington Square Mall

Offering Summary

Lease Rate:	\$23.00 SF/yr (MG)
Building Size:	169,704 SF
Available SF:	1,722 - 16,034 SF
Lot Size:	29,030 SF

Demographics	1 Mile	3 Miles	5 Miles
Total Households	5,871	39,576	80,048
Total Population	11,590	87,914	190,310
Average HH Income	\$58,146	\$67,506	\$71,871

For More Information

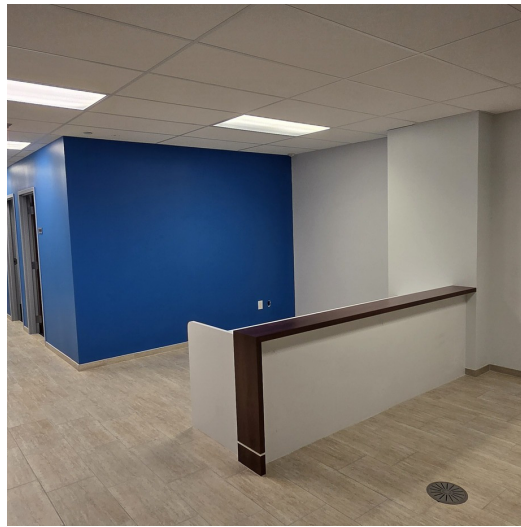
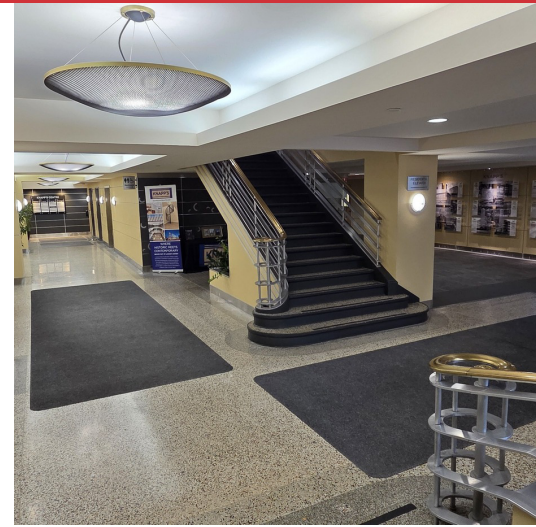


Jeffrey Branch

Associate Broker

O: 517 487 9222 | C: 517 899 6368

jbranch@naimidmichigan.com



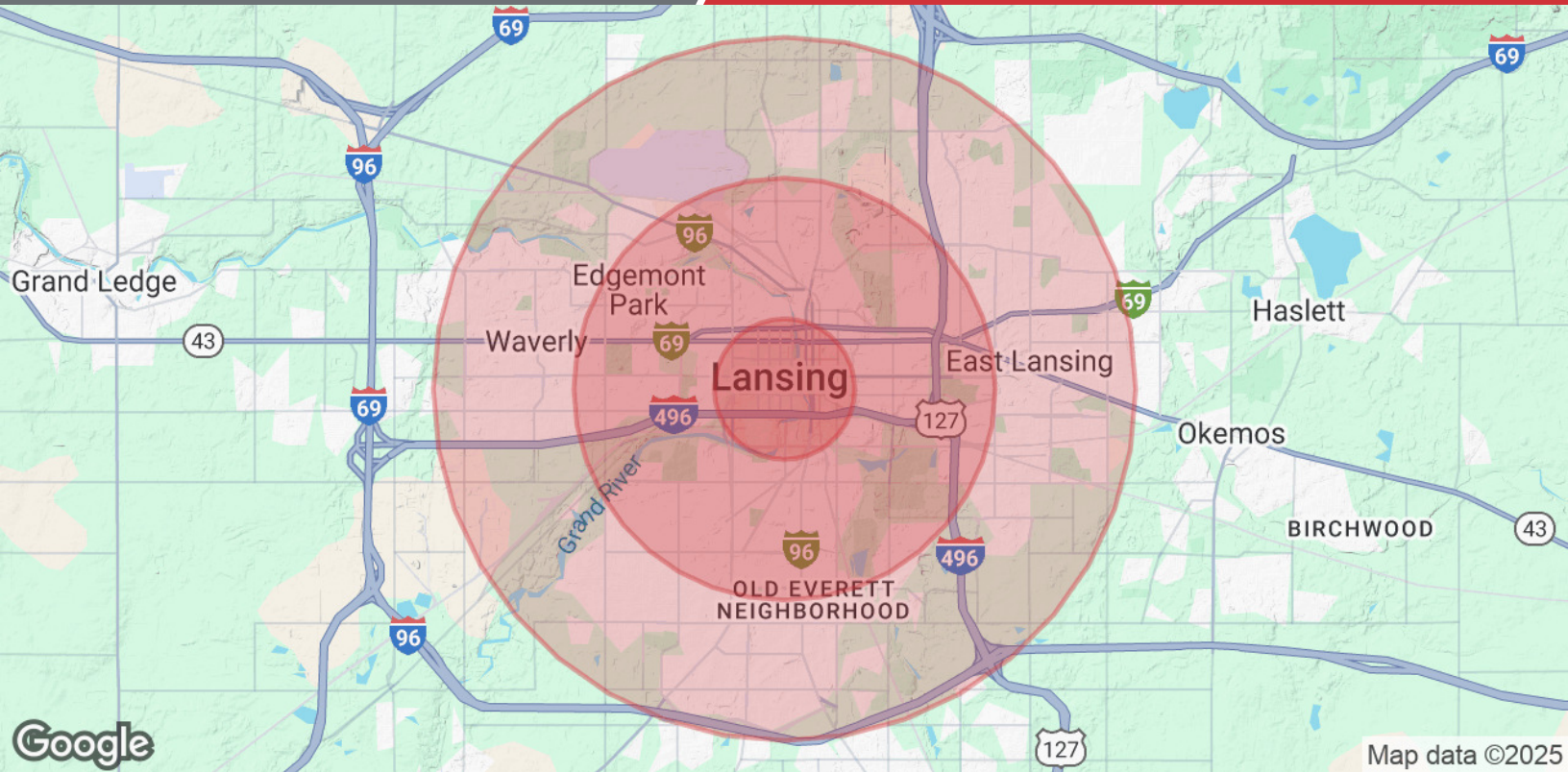
Lease Information

Lease Type:	MG	Lease Term:	Negotiable
Total Space:	1,722 - 16,034 SF	Lease Rate:	\$23.00 SF/yr

Available Spaces

Suite	Tenant	Size (SF)	Lease Rate
L20	Available	2,218 SF	\$23.00 SF/yr
100	Available	3,611 - 8,094 SF	Negotiable
M10	Available	4,483 - 8,094 SF	Negotiable
M20	Available	1,722 SF	\$23.00 SF/yr
215	Available	2,978 SF	\$23.00 SF/yr
315	Available	2,980 SF	\$23.00 SF/yr
325	Available	3,599 SF	\$23.00 SF/yr
405	Available	2,680 - 16,034 SF	\$23.00 SF/yr
425	Available	3,608 SF	\$23.00 SF/yr
435	Available	2,557 - 16,034 SF	\$23.00 SF/yr





Population	1 Mile	3 Miles	5 Miles
Total Population	11,590	87,914	190,310
Average Age	37	38	37
Average Age (Male)	37	37	36
Average Age (Female)	37	39	38
Households & Income	1 Mile	3 Miles	5 Miles
Total Households	5,871	39,576	80,048
# of Persons per HH	2	2.2	2.4
Average HH Income	\$58,146	\$67,506	\$71,871
Average House Value	\$142,195	\$146,491	\$178,057

Demographics data derived from AlphaMap