

±999 SF
PLUS PATIO
RETAIL SPACE AVAILABLE

CAROLWOOD

1919 Lincoln Blvd.
Venice, CA 90291



Bradley Avery

Broker Associate
DRE 01966525

+1 310.804.4340

bavery@carolwoodre.com

carolwoodre.com

FOR LEASE

1919 LINCOLN BLVD.

VENICE, CA 90291

\$7,500 MO MG

(+ UTILITIES, INTERNET, JANITORIAL)

Property Description

Lots of natural light.

Enclosed workout area.

1 ADA bathroom.

Private fenced patio.

Storage area.

Great location on the best block of Lincoln in Venice, close to restaurants and other amenities, including the neighbor tenant, Teddy's Hothouse.



AVAILABLE RSF

± 999 RSF (plus patio)

PARKING

Street Parking

LEASE RATE

\$7,500 per Mo. / MG

(plus utilities, internet and janitorial)

ACCESSIBILITY

88/100 Walkscore

USAGE

Retail/Fitness (tenant to confirm use)

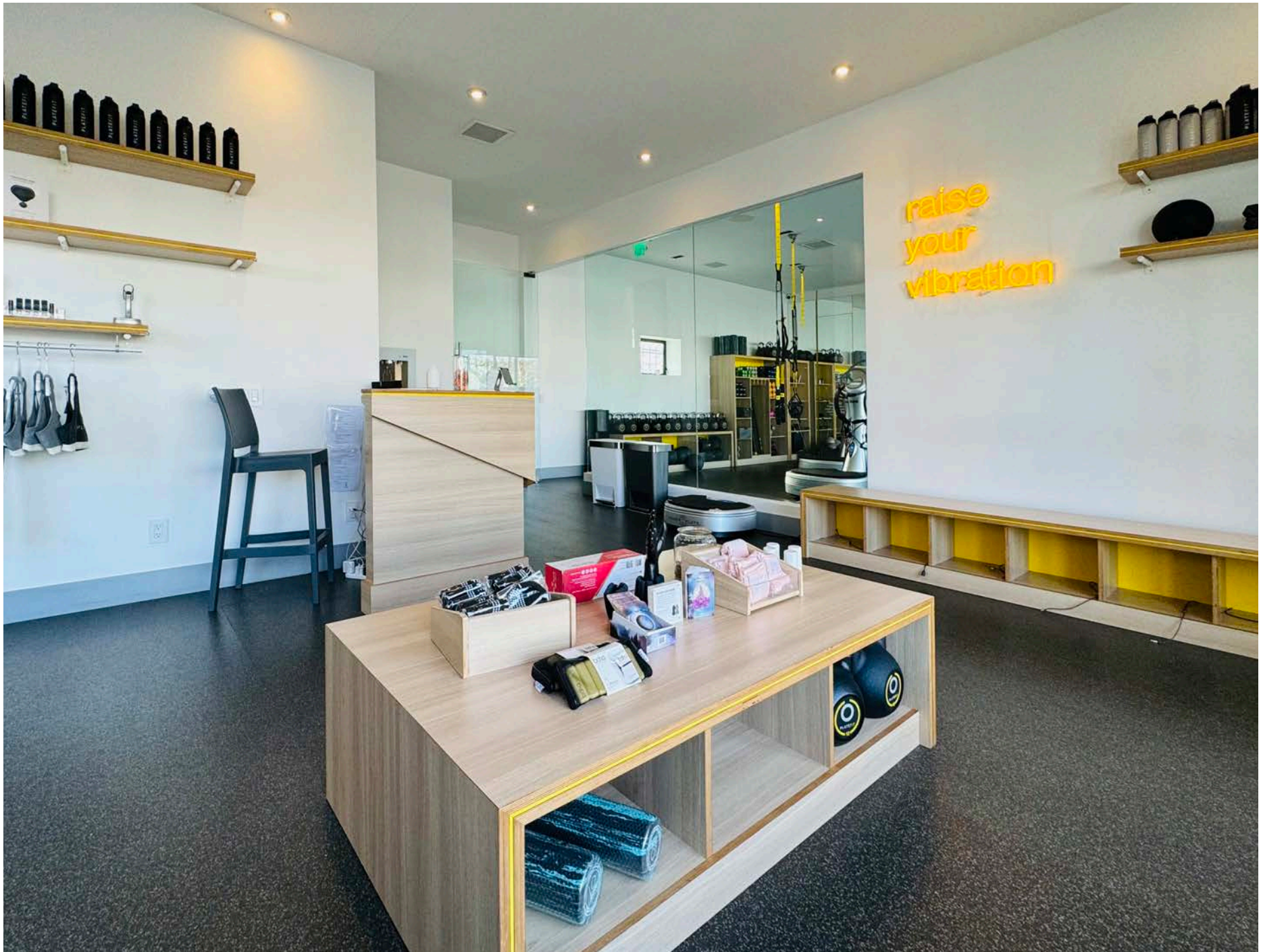
OCCUPANCY

30 - 60 Days

TERM

Negotiable

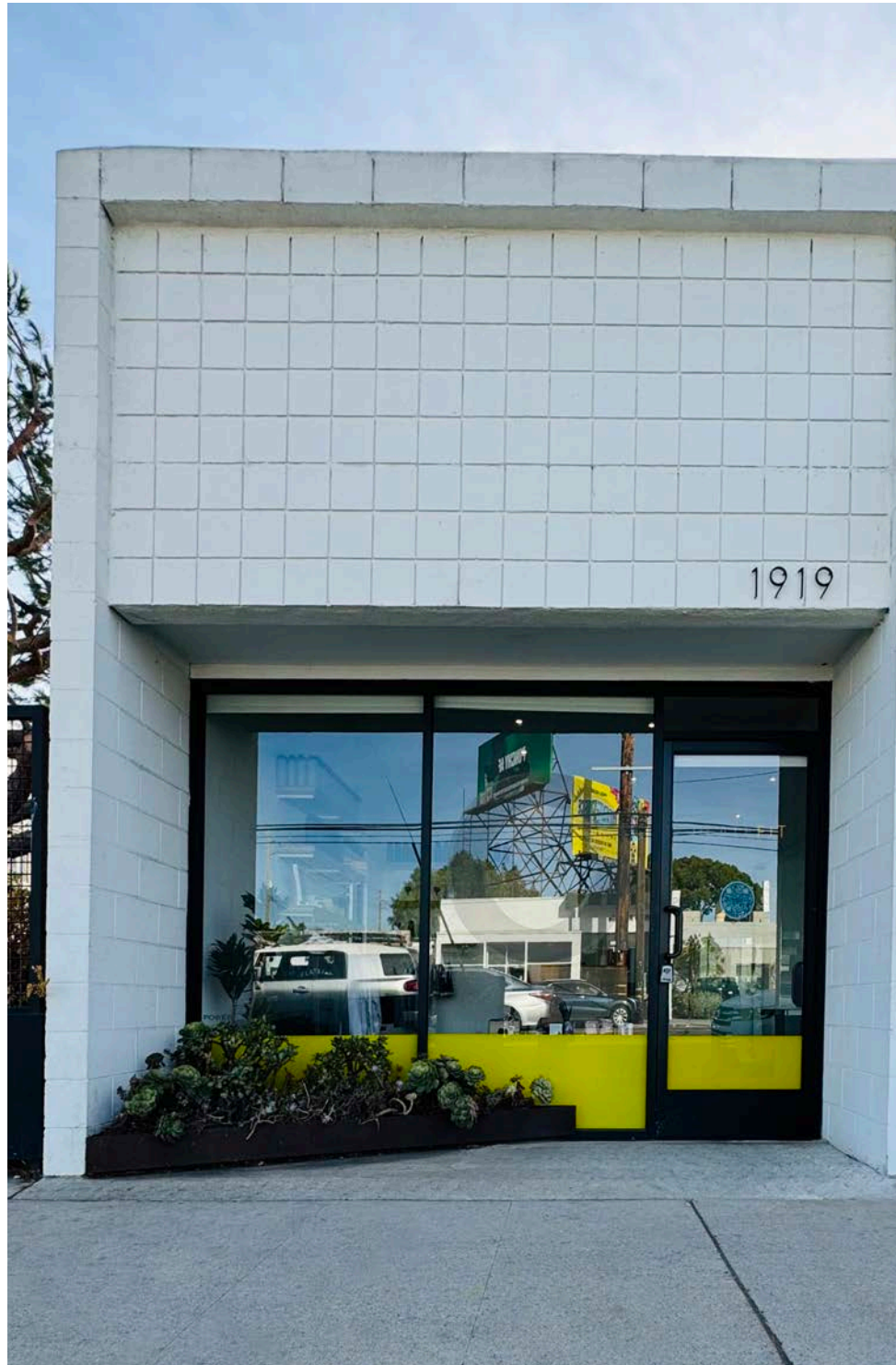












THE NEIGHBORHOOD

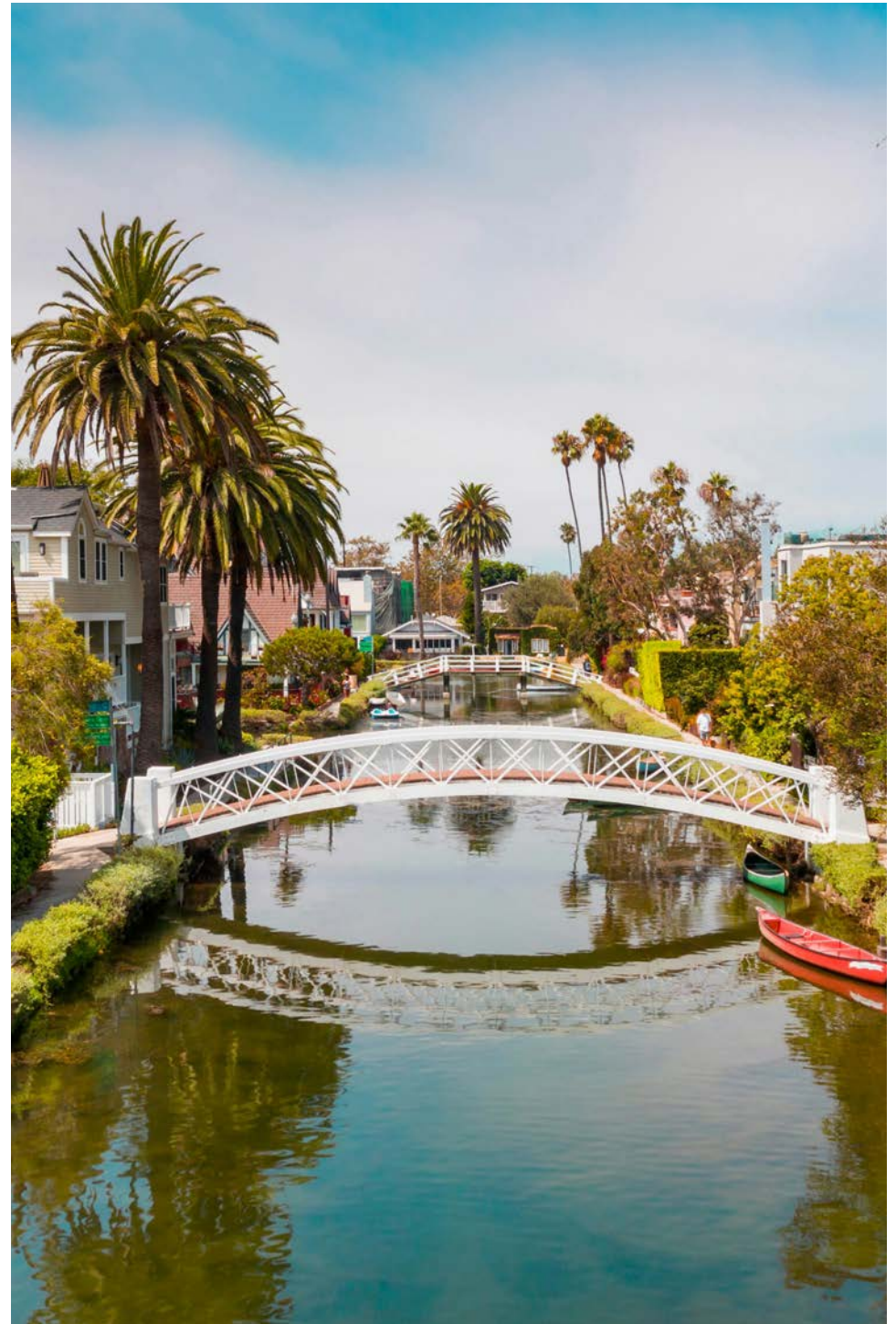
Venice

Walkable and bikeable neighborhood with a diverse, high-quality amenity base

Vibrant community of young creative professionals

Urban art and galleries within walking distance

One of the most active retail economic hotspots in the L.A. region.



COMMERCIAL

CAROLWOODRE.COM

©2024 Carolwood Estates. Broker does not guarantee the accuracy of square footage, lot size, or other information concerning the condition or features of the property obtained from various sources. Not intended as a solicitation if property is currently listed. Equal Housing Opportunity, DRE 02200006



1.

Love Yoga

Love Yoga Venice provides a serene environment for yoga enthusiasts, offering a range of classes that cater to different skill levels.

2.

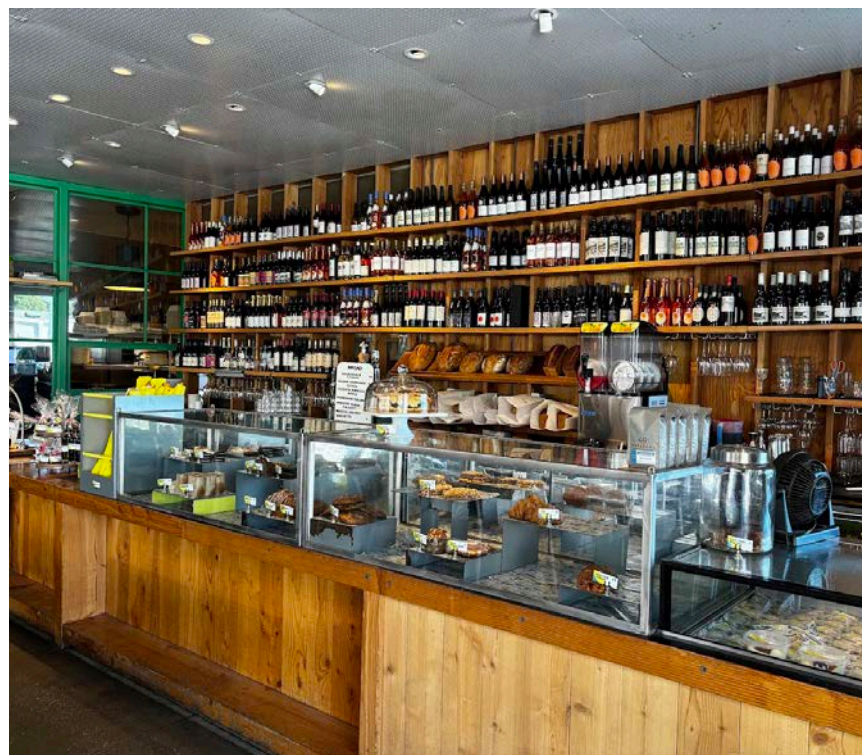
Zinqué

Zinqué is a chic cafe and wine bar offering a cozy setting with a variety of French-inspired dishes and a curated wine list. It's an ideal spot for a relaxed meal, coffee break, or evening drink with friends.

3.

Superba Food + Bread

Superba Food + Bread is a popular cafe and bakery known for its artisanal breads, fresh pastries, and wholesome meals. The inviting space and delicious offerings make it a favorite destination for breakfast, brunch, or a casual lunch.



CAROLWOODRE.COM



1919 Lincoln Blvd

NON-ENDORSEMENT & DISCLAIMER NOTICE

CONFIDENTIALITY & DISCLAIMER

The information contained in the following Marketing Brochure is proprietary and strictly confidential. It is intended to be reviewed only by the party receiving it from Carolwood Estates and should not be made available to any other person or entity without the written consent of Carolwood Estates. This Marketing Brochure has been prepared to provide summary, unverified information to prospective purchasers, and to establish only a preliminary level of interest in the subject property. The information contained herein is not a substitute for a thorough due diligence investigation. Carolwood Estates has not made any investigation, and makes no warranty or representation, with respect to the income or expenses for the subject property, the future projected financial performance of the property, the size and square footage of the property and improvements, the presence or absence of contaminating substances, PCB's or asbestos, the compliance with State and Federal regulations, the physical condition of the improvements thereon, or the financial condition or business prospects of any tenant, or any tenant's plans or intentions to continue its occupancy of the subject property. The information contained in this Marketing Brochure has been obtained from sources we believe to be reliable; however, Carolwood Estates has not verified, and will not verify, any of the information contained herein, nor has Carolwood Estates conducted any investigation regarding these matters and makes no warranty or representation whatsoever regarding the accuracy or completeness of the information provided. All potential buyers must take appropriate measures to verify all of the information set forth herein.

NON-ENDORSEMENT NOTICE

Carolwood Estates. is not affiliated with, sponsored by, or endorsed by any commercial tenant or lessee identified in this marketing package. The presence of any corporation's logo or name is not intended to indicate or imply affiliation with, or sponsorship or endorsement by, said corporation of Carolwood Estates, its affiliates or subsidiaries, or any agent, product, service, or commercial listing of Carolwood Estates, and is solely included for the purpose of providing tenant lessee information about this listing to prospective customers.

©2024 Carolwood Estates is a service mark of Carolwood Partners Inc.

All rights reserved.



COMMERCIAL

Bradley Avery

+1 310.804.4340

bavery@carolwoodre.com

Broker Associate

carolwoodre.com

DRE 01966525

CAROLWOOD



COMMERCIAL