

12122 WOODRUFF AVE, DOWNEY, CA 90241

2.5 ACRE **INDUSTRIAL** YARD WITH 74 TRAILER STALLS

AVAILABLE NOW



Proudly Owned by a Joint Venture Between:



LAKE CREEK INDUSTRIAL LLC

Exclusive Listing Agent:

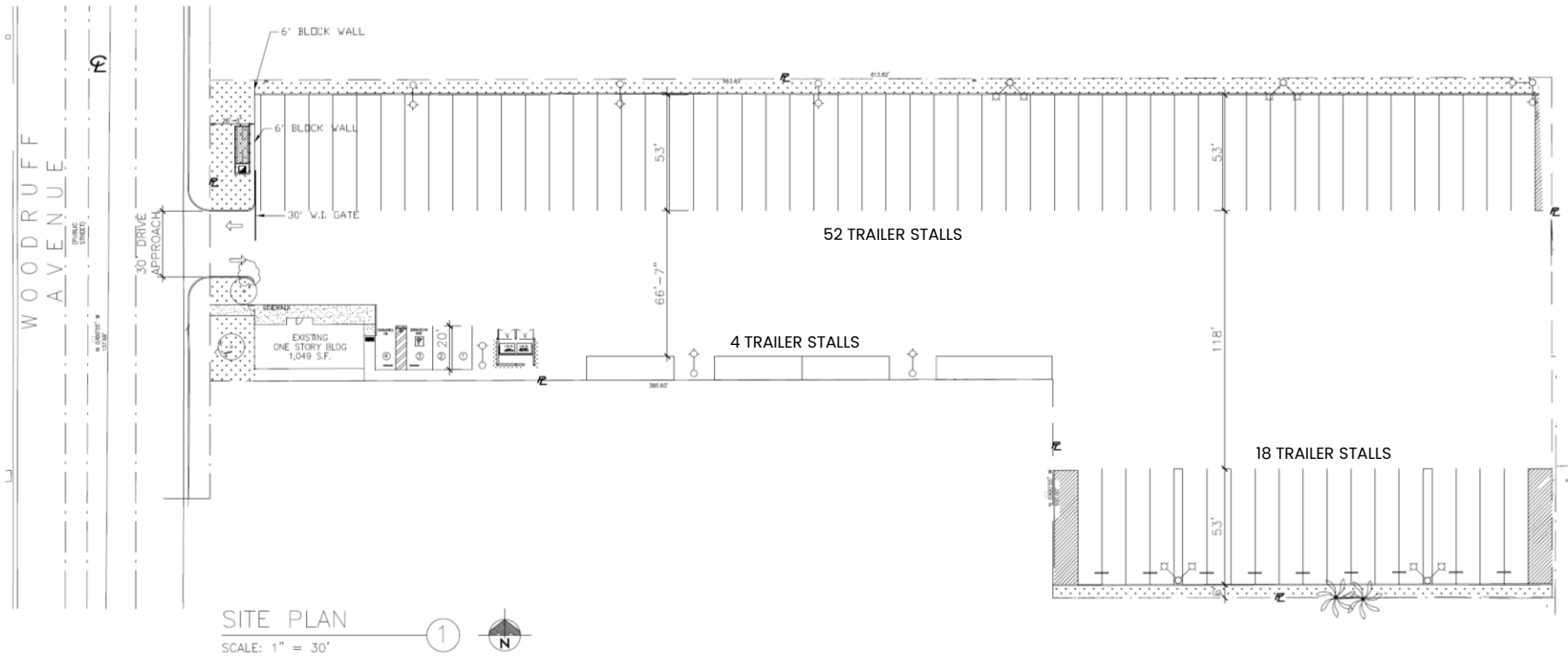


Mark Repstad | Principal
T: 213.338.8000 xl
mark@southlandcre.com
License ID: 01492673

INDUSTRIAL IOS

Southland Commercial Real Estate
251 S Lake Ave, Ste. 800 | Pasadena, CA 91101
T: 213.338.8000 | License ID: 02154676
www.southlandcre.com

12122 WOODRUFF AVE, DOWNEY, CA 90241
 2.5 ACRE **IOS** YARD WITH 74 TRAILER STALLS | AVAILABLE NOW



- BRAND NEW 2.5 ACRE **IOS** YARD | PAVED, FENCED, LIT
- 1 BLOCK FROM NEW PROLOGIS TRUCK TERMINAL
- 1,049 SF OFFICE/GUARD SHACK AT ENTRY | M1/M2, CITY OF DOWNEY ZONE
- 15 MILES TO PORTS OF LONG BEACH AND LOS ANGELES

Exclusive Listing Agent: Mark Repstad | Principal
mark@southlandcre.com
 T: 213.338.8000 x1



12122 WOODRUFF AVE, DOWNEY, CA 90241
2.5 ACRE **IOS** YARD WITH 74 TRAILER STALLS | AVAILABLE NOW



WOODRUFF AVE

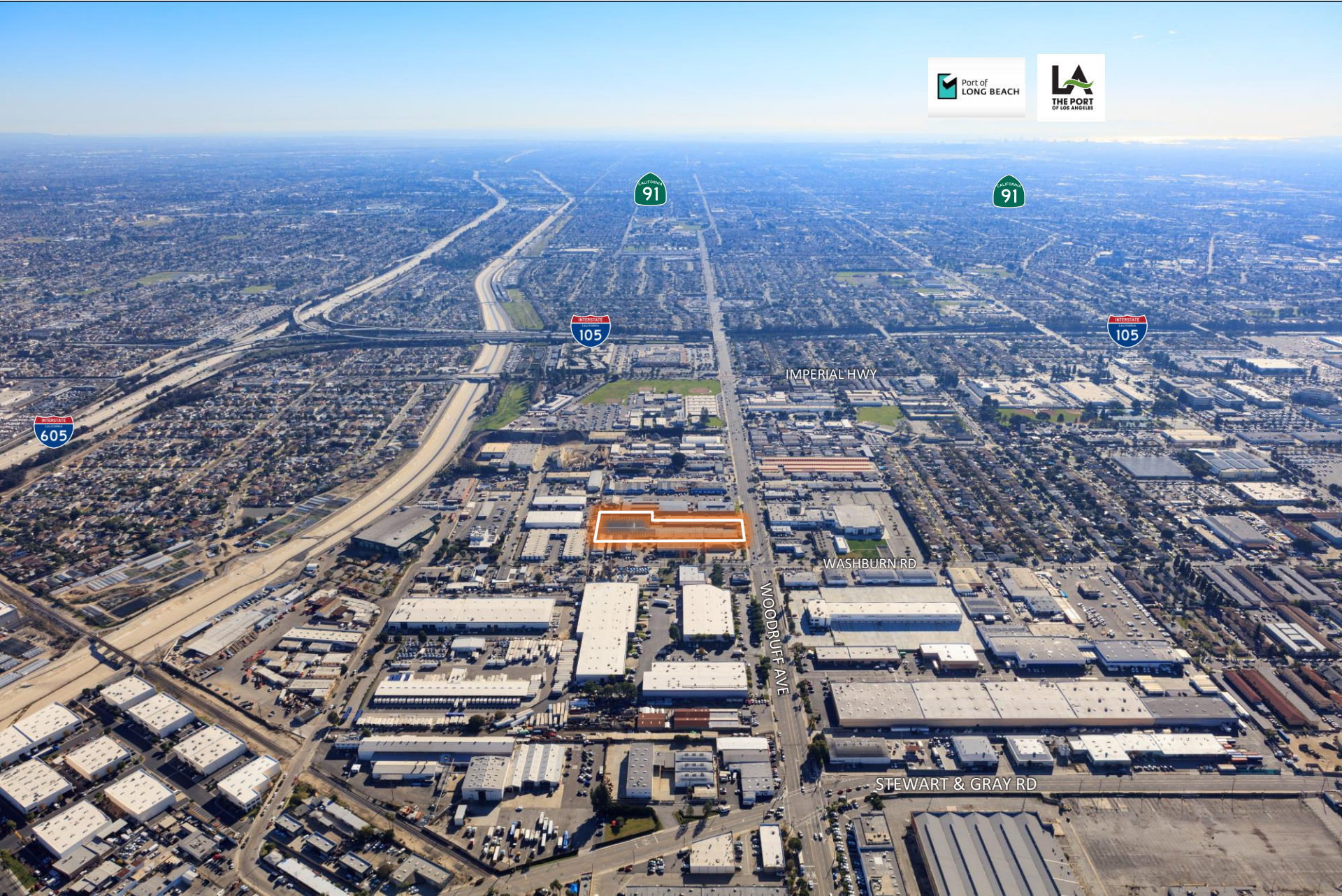
12122 WOODRUFF AVE, DOWNEY, CA 90241
2.5 ACRE IOS YARD WITH 74 TRAILER STALLS | AVAILABLE NOW



NEW 70 DH TRUCK TERMINAL ON 6.31 AC
(NOT A PART)



12122 WOODRUFF AVE, DOWNEY, CA 90241
2.5 ACRE **IOS** YARD WITH 74 TRAILER STALLS | AVAILABLE NOW



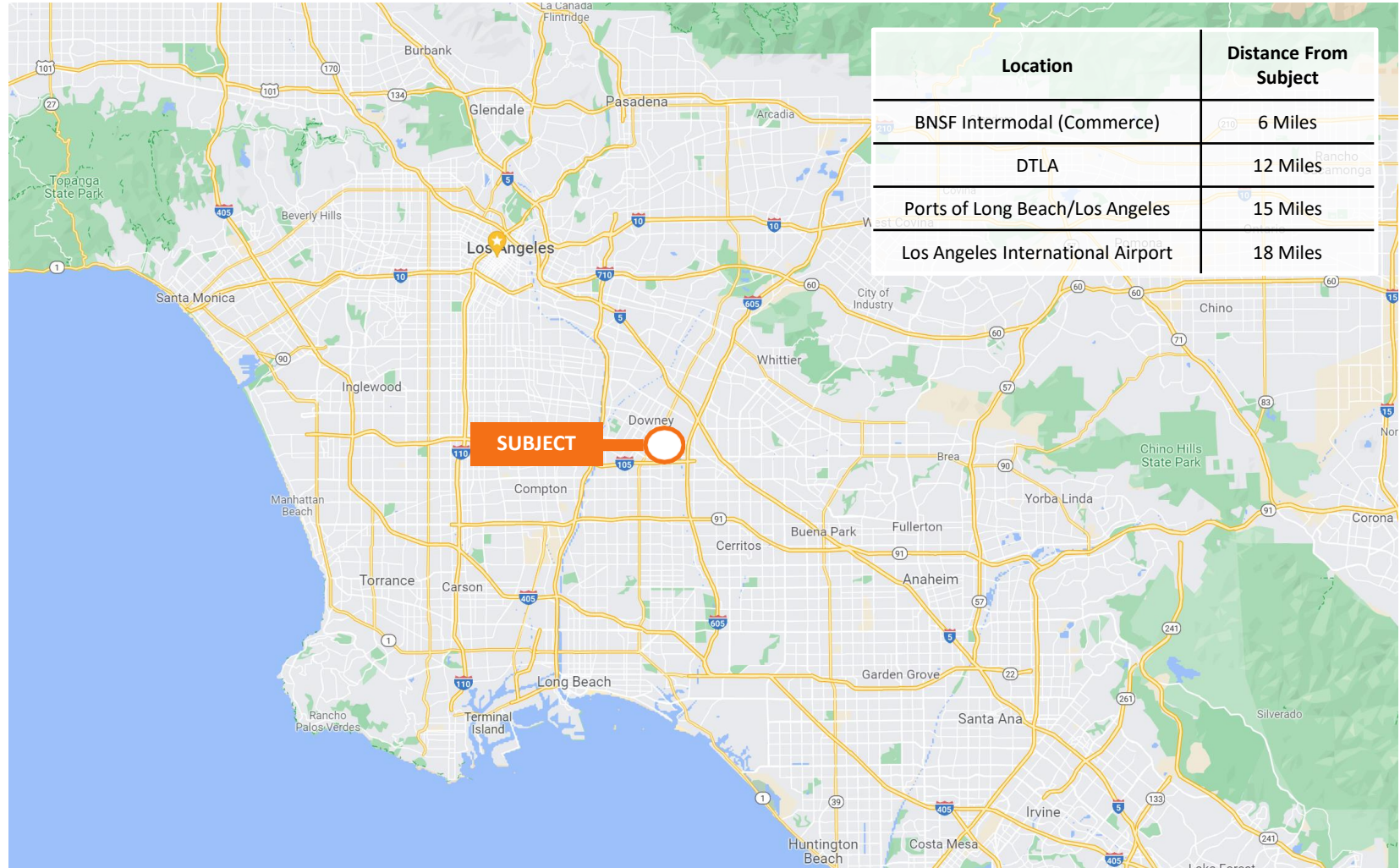
IMPERIAL HWY

WASHBURN RD

WOODRUFF AVE

STEWART & GRAY RD

12122 WOODRUFF AVE, DOWNEY, CA 90241
 2.5 ACRE **IOS** YARD WITH 74 TRAILER STALLS | AVAILABLE NOW



Proudly Owned by a Joint Venture Between:



Exclusive Listing Agent:

Mark Repstad | Principal
 T: 213.338.8000 x1
mark@southlandcre.com



Corporate License ID: 02154676
 The information contained herein has been obtained from sources deemed reliable but has not been verified and no guarantee, warranty or representation, either express or implied, is made with respect to such information. Terms of sale or lease and availability are subject to change or withdrawal without notice.