

# HUNT PARK COVE COMMERCE CENTER

280 Hunt Park Cv  
Longwood, FL 32750

Office/Flex For Lease

7,925 SF



Leasing Information:  
407.872.3500

**Sean DuPree**  
407.872.3500  
sdupree@lpc.com

# Lincoln

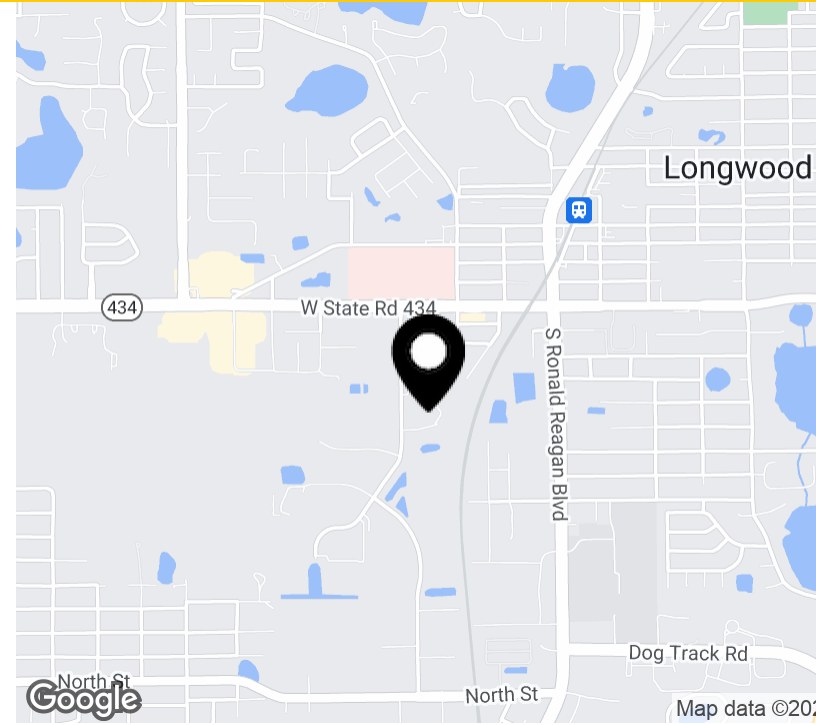
Lincoln Property Company  
333 South Garland Ave  
Orlando, FL 32801

[www.lpc.com](http://www.lpc.com)

# HUNT PARK COVE COMMERCE CENTER

Office/Flex For Lease

280 Hunt Park Cv | Longwood, FL 32750



## Property Highlights

- 16,569 SF office/flex building with 7,925 SF freestanding office building available for lease
- 3.3/1000 Parking ratio (66 Spaces)
- Attractive stucco finish; individual, dedicated entrance
- Ability to add grade-level overhead door
- Backup generator available (125 kW)
- Located in the attractive Florida Central Commerce Park
- Central location just off Florida Central Parkway between I-4 and US Hwy 17-92
- Easy access to SR 434, CR 427 (Ronald Reagan Blvd), SR 436 (Semoran Blvd), and Maitland Blvd
- Near USPS, UPS, and FedEx

## Property Overview

This property would be ideal for the business owner who has product to sell that needs a showroom, retail outlet, or an office that needs some warehouse space. Fully air-conditioned. Event Center, Distribution Center, Communications Hub, Training Center, Gym, etc.

Availabilities	SF	Lease Rate	Date Available
Suite 1090	7,925 SF	\$16.00 MG	Available within 30 days notice

**Sean DuPree**

407.872.3500  
sdupree@lpc.com

**Lincoln**

# HUNT PARK COVE COMMERCE CENTER

Additional Photos

280 Hunt Park Cv | Longwood, FL 32750



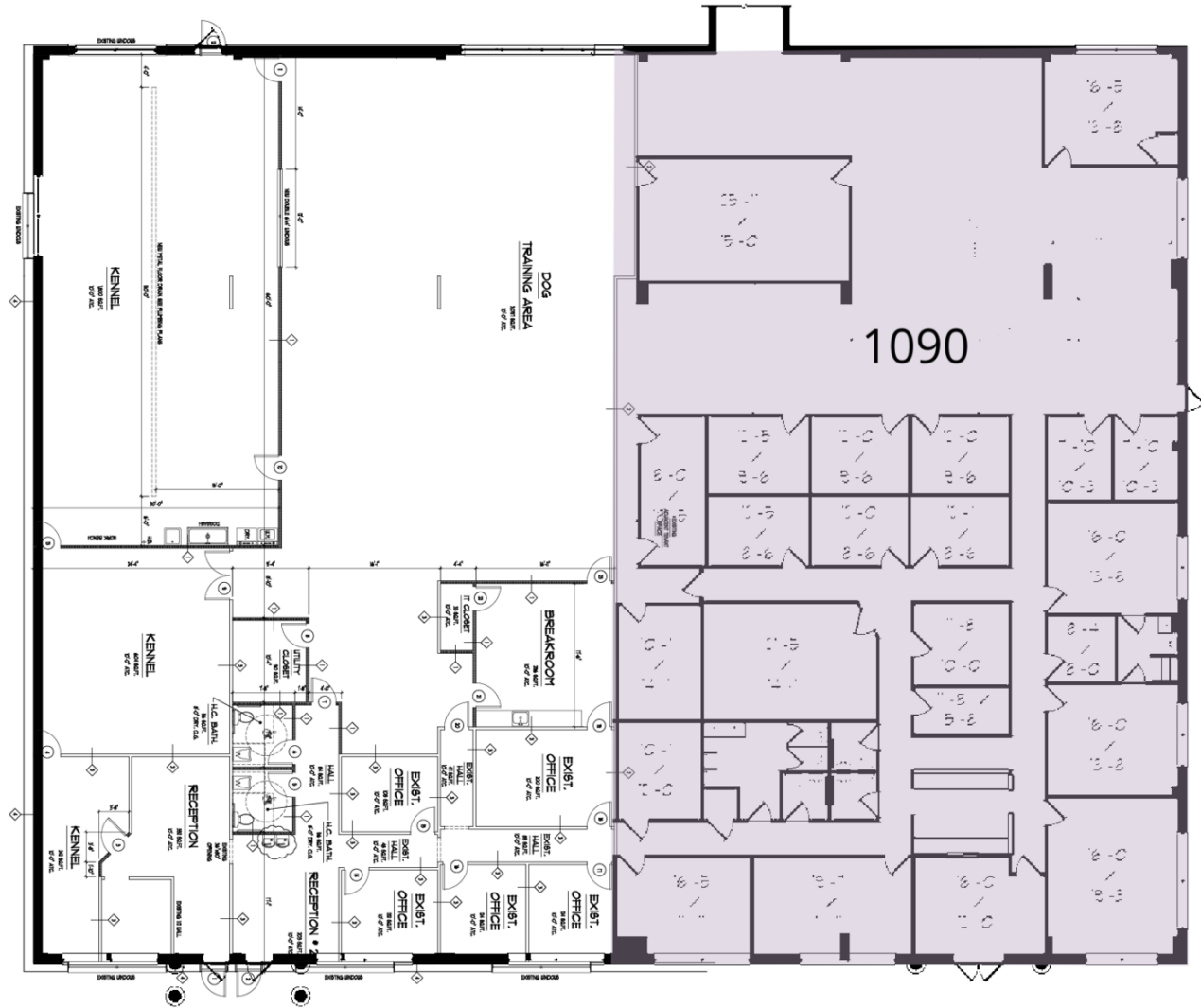
Sean DuPree  
407.872.3500  
sdupree@lpc.com

Lincoln

# HUNT PARK COVE COMMERCE CENTER

Suite 1090

280 Hunt Park Cv | Longwood, FL 32750



Suite	Size	Lease Rate	Description
■ Suite 1090	7,925 SF	\$16.00 MG	16,569 SF office/flex building with 7,925 SF available for lease \$16/RSF modified gross 3.3/1000 Parking ratio (66 Spaces) Ability to add grade-level overhead door

Sean DuPree  
407.872.3500  
sdupree@lpc.com

Lincoln



# HUNT PARK COVE COMMERCE CENTER

280 Hunt Park Cv  
Longwood, FL 32750

Leasing Information:  
407.872.3500

**Sean DuPree**  
407.872.3500  
sdupree@lpc.com

## Lincoln

Lincoln Property Company  
333 South Garland Ave  
Orlando, FL 32801

[www.lpc.com](http://www.lpc.com)