

For Sale

209 Wicksteed Avenue

UNIT 32 | TORONTO, ON

Opportunity to own a commercial condo office unit situated in the heart of Leaside at Wicksteed Business Park Office



CBRE

Property Overview

209 Wicksteed Avenue, Unit 32

Located near the intersection of Wicksteed Avenue and Laird Drive, 209 Wicksteed is a prime opportunity for users/businesses to own a commercial condominium office unit located in the heart of Leaside, south of Eglinton Avenue East at Wicksteed Business Park. 209 Wicksteed benefits from its close proximity to major arterial roads, Don Valley Parkway, Highway 401, and public transportation with the bus stop being directly in front of the complex. Additionally, the Property is minutes away from various retail, entertainment, and restaurant amenities.



Property Details

Total Area
966 sq. ft.

Asking Price
\$725,000

Taxes (Annual 2025)
\$6,518.11

Condo Maintenance Fees
\$403.36¹
¹inclusive of HST


Availability
March 1, 2026

Parking
Surface Parking Available

Zoning
Employment Industrial (E 1.0)

[Click to View Zoning Report](#)

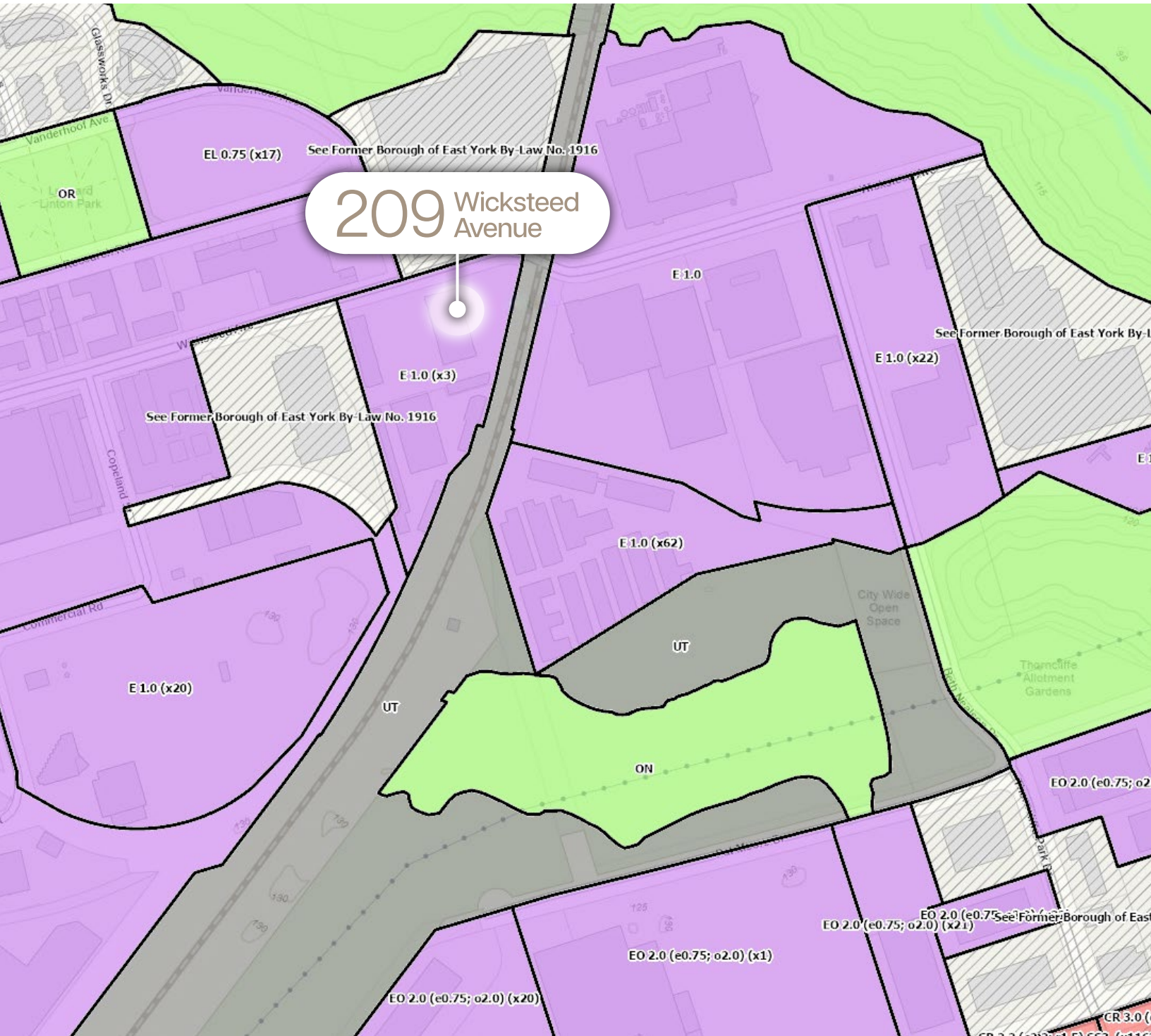


 In the heart of Leaside at
Wicksteed Business Park Office



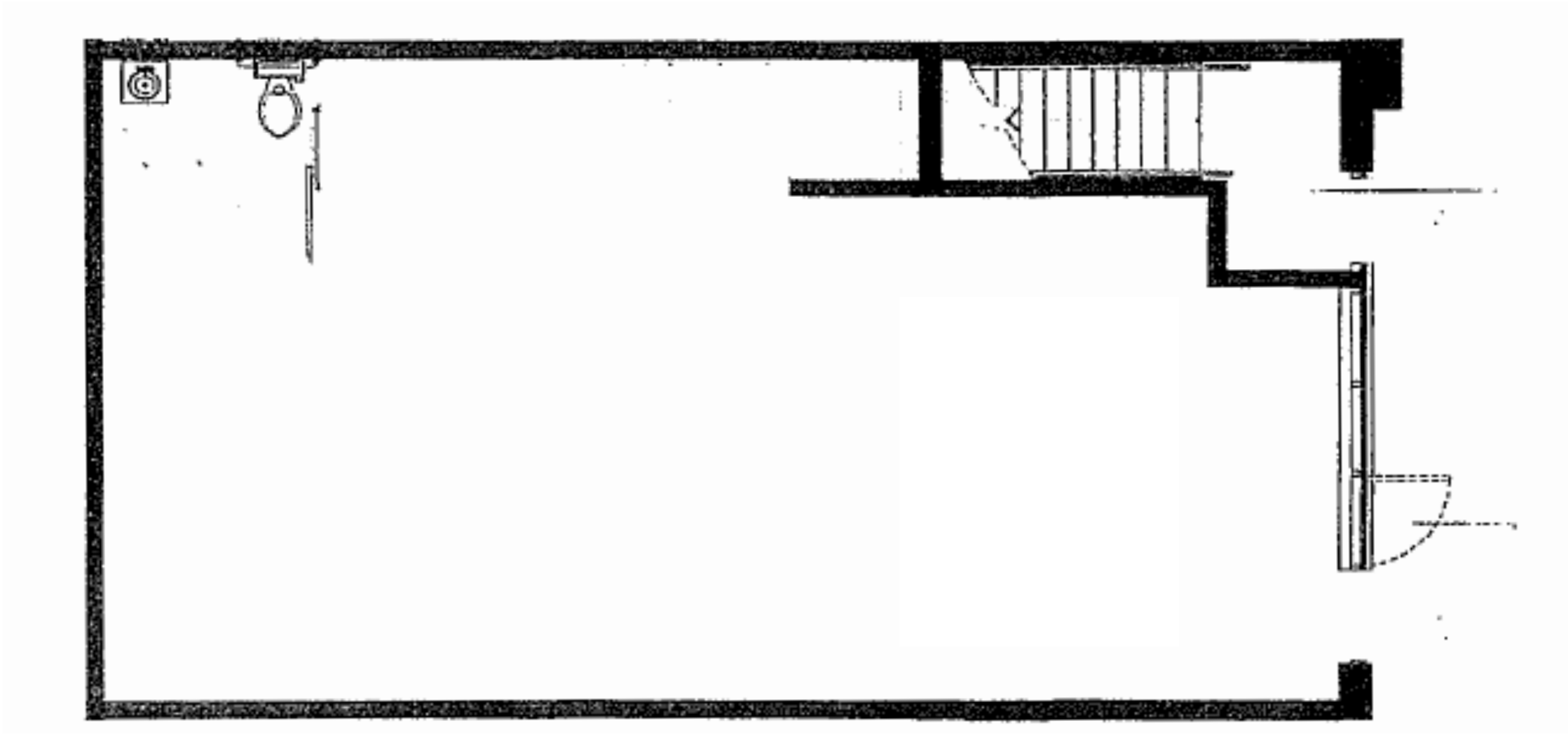
Employment Industrial (E 1.0)

Strategically located within the Employment Industrial (E 1.0) offering a wide variety of permitted uses, allowing for flexibility for many business types. Catering to uses including (but not limited to): professional office services, education, warehousing and storage. This location provides the flexibility your business needs to thrive.



Floorplan

Unit 32 • 966 sq. ft.



Key Features

- Ground floor direct walk-in space
- Efficient open concept unit with high ceilings
- Private washroom and additional sink

209 Wicksteed Avenue

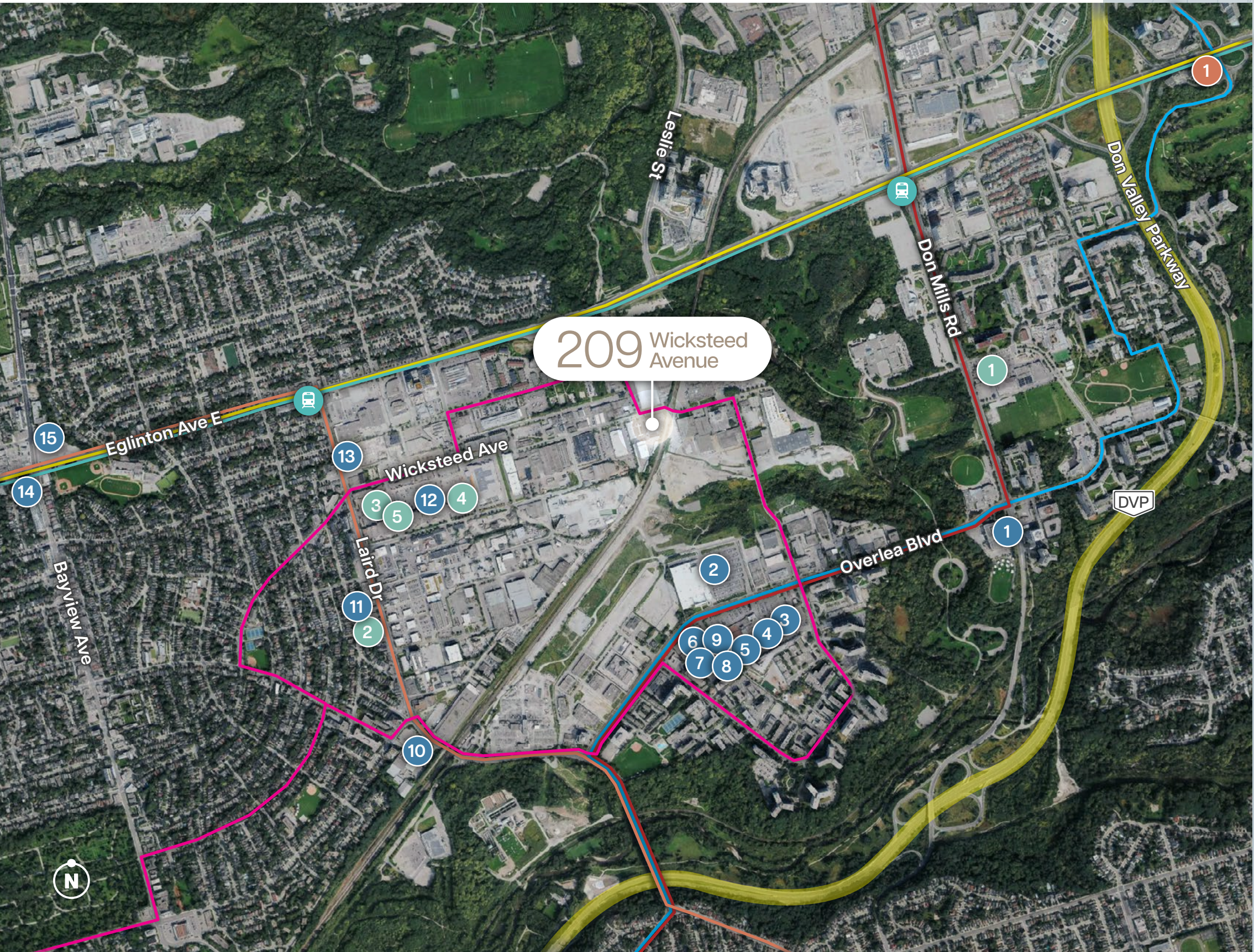


Property Photos

Unit 32



Location Overview



Nearby Amenities

Restaurants

- | | | | |
|---|-------------|---|-----------|
| 1 | Pita Land | 2 | Five Guys |
| | Subway | 3 | KFC |
| | Tim Hortons | 4 | Subway |
| | McDonald's | 5 | Starbucks |

Services & Retail

- | | | | |
|----|--------------------|----|----------------|
| 1 | Shell | 12 | Winners |
| 2 | Costco Wholesale | | LCBO |
| 3 | Iqbal Foods | | Farm Boy |
| 4 | Dollarama | | Best Buy |
| 5 | Food Basics | | The Home Depot |
| 6 | Esso | 13 | Canadian Tire |
| 7 | BMO | | HomeSense |
| 8 | Scotiabank | | Marshalls |
| 9 | TD | 14 | Metro |
| 10 | Loblaws | | BMO |
| 11 | Longo's | | Shell |
| | Shoppers Drug Mart | 15 | Esso |

Hotels

- | | |
|---|-----------------------------------|
| 1 | Toronto Don Valley Hotel & Suites |
|---|-----------------------------------|

Transit

- | | |
|---------------------|---------|
| Don Valley Parkway | 7 mins |
| Highway 401 | 13 mins |
| Gardiner Expressway | 13 mins |



- TTC Bus Route 100
- TTC Bus Route 25
- TTC Bus Route 334
- TTC Bus Route 74
- TTC Bus Route 88
- Eglinton Crosstown LRT
- Eglinton LRT Station

Office
For Sale

Contact Us For More Information

Tony Gill*

Executive Vice President
+1 416 495 6261
tony.gill@cbre.com

Bryant Wilson*

Vice President
+1 416 495 6278
bryant.wilson@cbre.com

Michelle Saberon*

Senior Transaction Manager
+1 416 495 6318
michelle.saberon@cbre.com

CBRE

*Sales Representative | CBRE Limited, Brokerage
2005 Sheppard Ave. E., #800, Toronto, ON M2J 5B4 | www.cbre.ca

*Sales Representative. All Outlines are approximate. This disclaimer shall apply to CBRE Limited, Real Estate Brokerage, and to all other divisions of the Corporation; to include all employees and independent contractors ("CBRE"). The information set out herein, including, without limitation, any projections, images, opinions, assumptions and estimates obtained from third parties (the "Information") has not been verified by CBRE, and CBRE does not represent, warrant or guarantee the accuracy, correctness and completeness of the Information. CBRE does not accept or assume any responsibility or liability, direct or consequential, for the Information or the recipient's reliance upon the Information. The recipient of the Information should take such steps as the recipient may deem necessary to verify the Information prior to placing any reliance upon the Information. The Information may change and any property described in the Information may be withdrawn from the market at any time without notice or obligation to the recipient from CBRE. CBRE and the CBRE logo are the service marks of CBRE Limited and/or its affiliated or related companies in other countries. All other marks displayed on this document are the property of their respective owners. All Rights Reserved. Mapping Sources: Canadian Mapping Services canadamapping@cbre.com; DMTI Spatial, EnviroNics Analytics, Microsoft Bing, Google Earth.