

FOR LEASE

3700 S. Lindbergh Blvd, Sunset Hills, MO 63127



Rare opportunity to lease a free-standing building in the heart of Sunset Hills.

- Free-Standing Building.
- Entire Building 33,422 +/- Square Feet.
- 390 +/- Feet of Frontage.
- Zoned C1 Commercial District in the City of Sunset Hills.
- Signalized Intersection with Curb cuts on S. Lindbergh and E. Watson Rd.
- Surface Parking 170+/-.
- Heavy Power.
- 100% Wet Sprinklered.

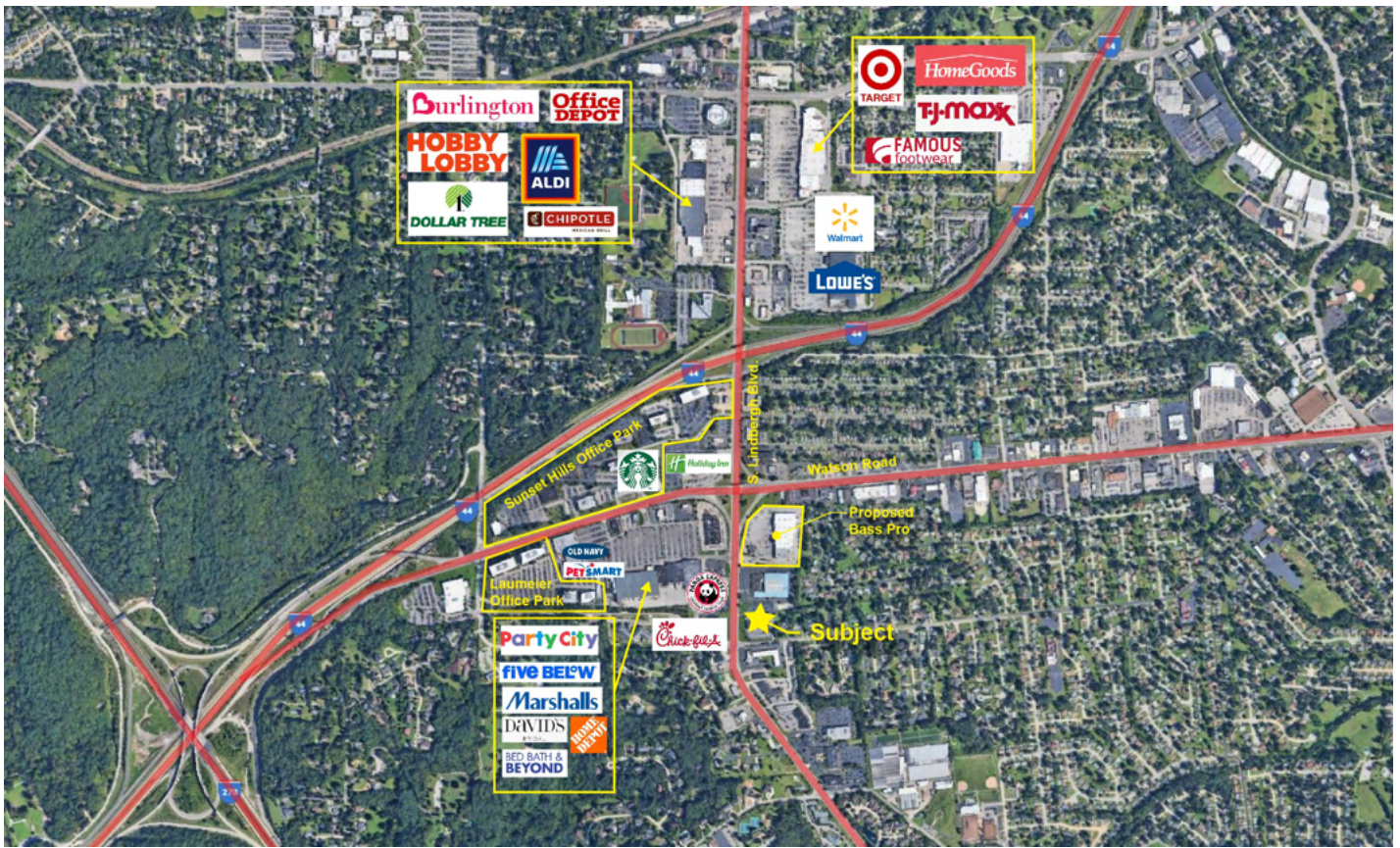
This information contained here in is warranted, although is has been obtained from the owner of the property or from other sources that we deem reliable. It is subject to change without notice. Owner and broker make no representation as to the environmental condition of the property and recommend independent investigation.



COMMERCIAL • INDUSTRIAL • INVESTMENTS • LAND DEVELOPMENT • MANAGEMENT

11555 Concord Village Ave. St Louis, Missouri 63128

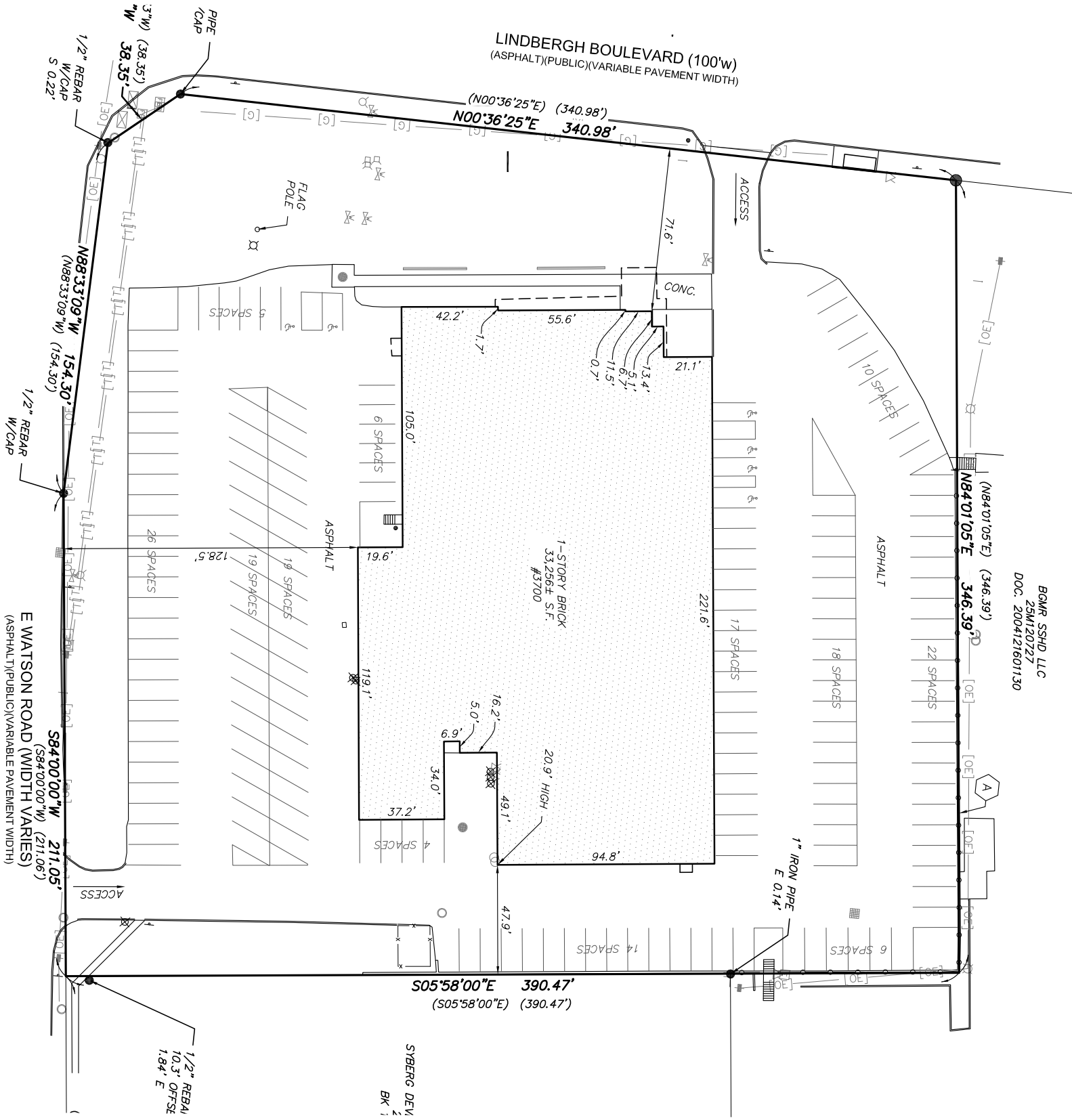
Office: 314-842-1800 Fax 314-842-1802 www.vossprop.com

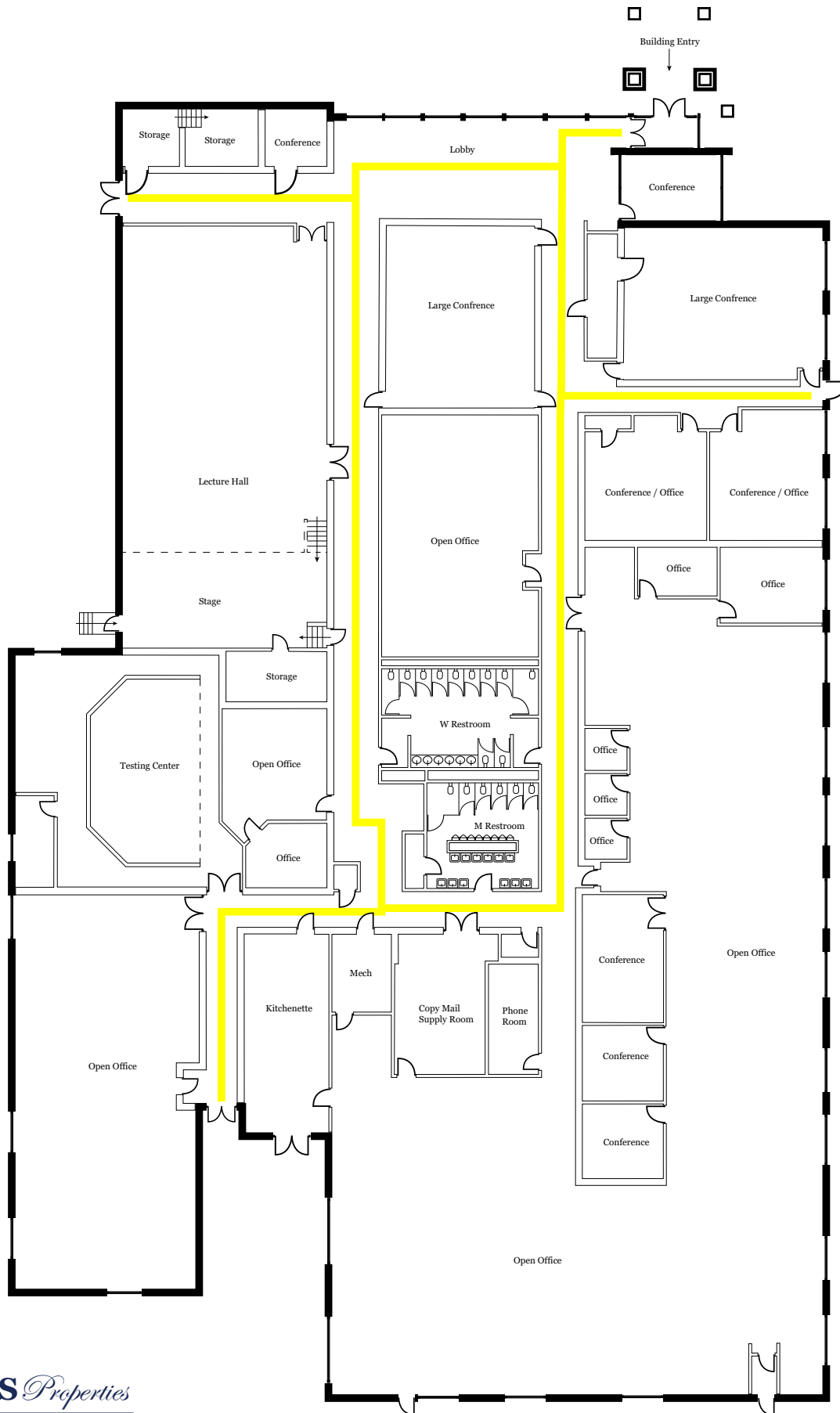


COMMERCIAL • INDUSTRIAL • INVESTMENTS • LAND DEVELOPMENT • MANAGEMENT

11555 Concord Village Ave. St Louis, Missouri 63128

Office: 314-842-1800 Fax 314-842-1802 www.vossprop.com





COMMERCIAL • INDUSTRIAL • INVESTMENTS • LAND DEVELOPMENT • MANAGEMENT

11555 Concord Village Ave. St Louis, Missouri 63128

Office: 314-842-1800 Fax 314-842-1802 www.vossprop.com