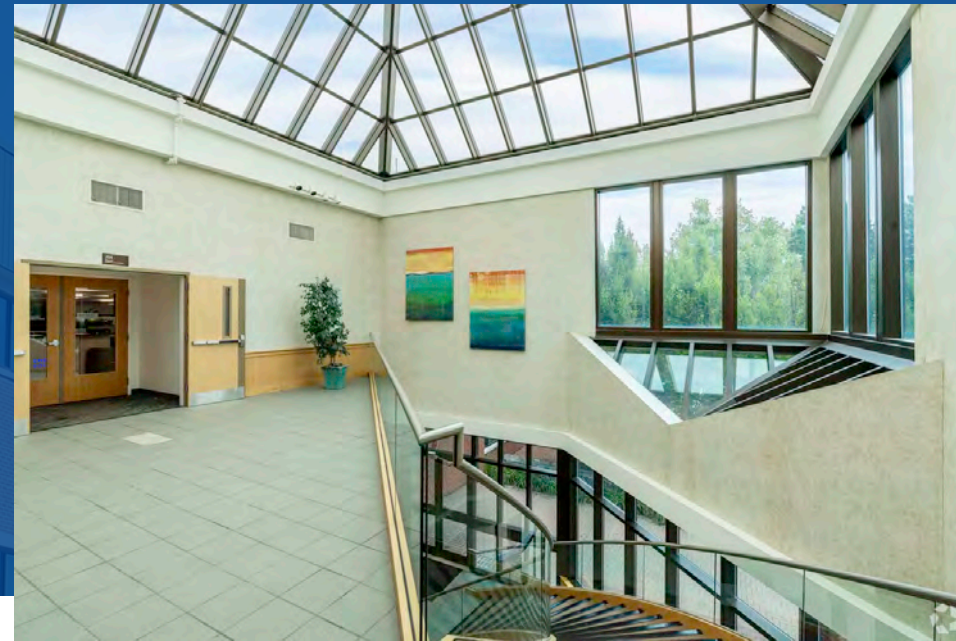
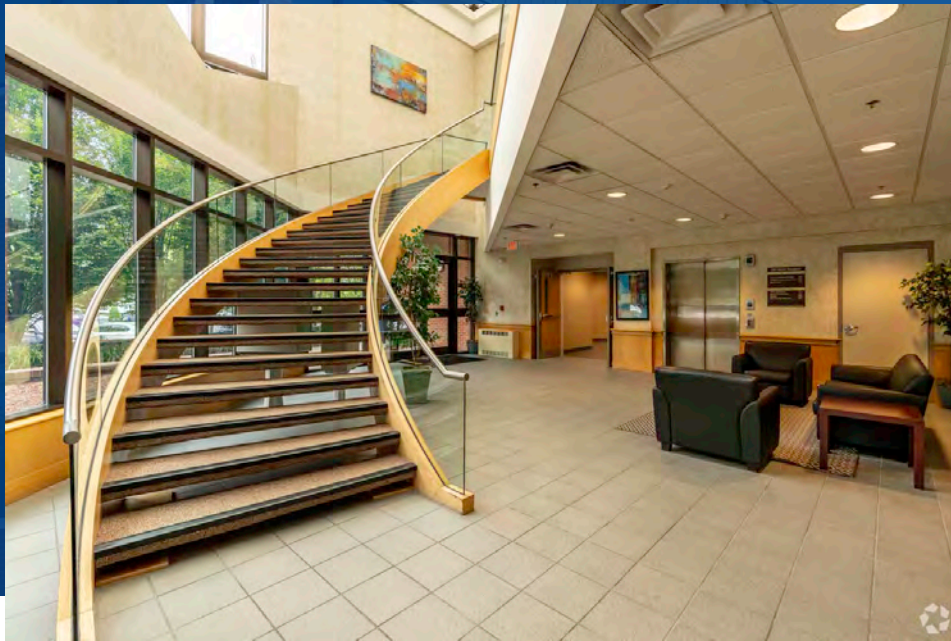


A large, modern brick office building with a green metal roof and a parking lot with several cars. The building has multiple stories with large windows and a prominent brick facade. The parking lot is paved and contains several vehicles, including a silver sedan, a dark SUV, a red SUV, a white SUV, a black pickup truck, and a white sedan. There are some green trees and bushes in the foreground.

FOR LEASE

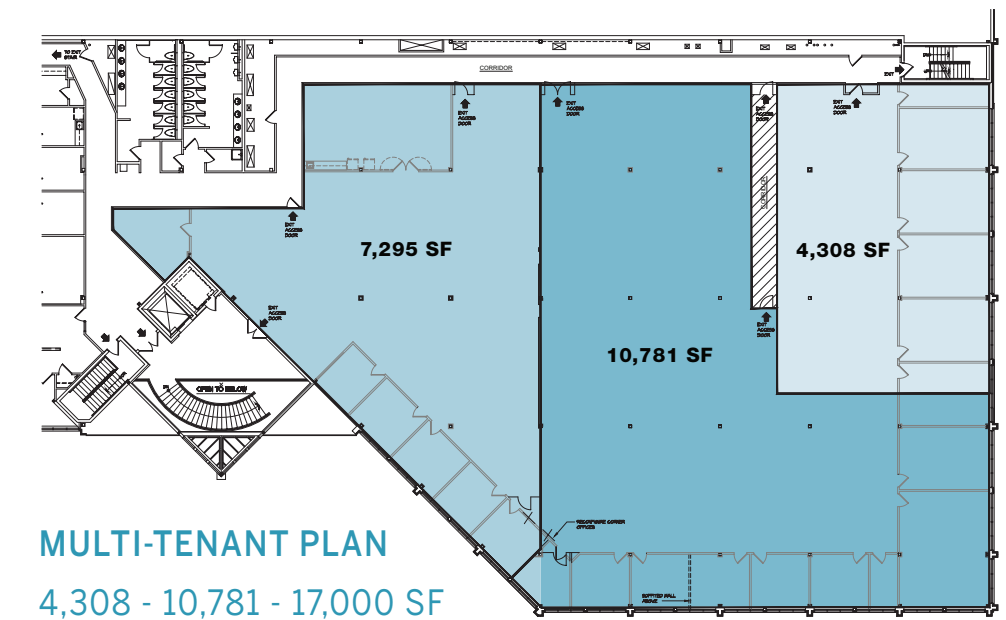
350  
Myles Standish  
BOULEVARD  
TAUNTON, MA

22,000 SF SUBDIVIDABLE OFFICE SPACE

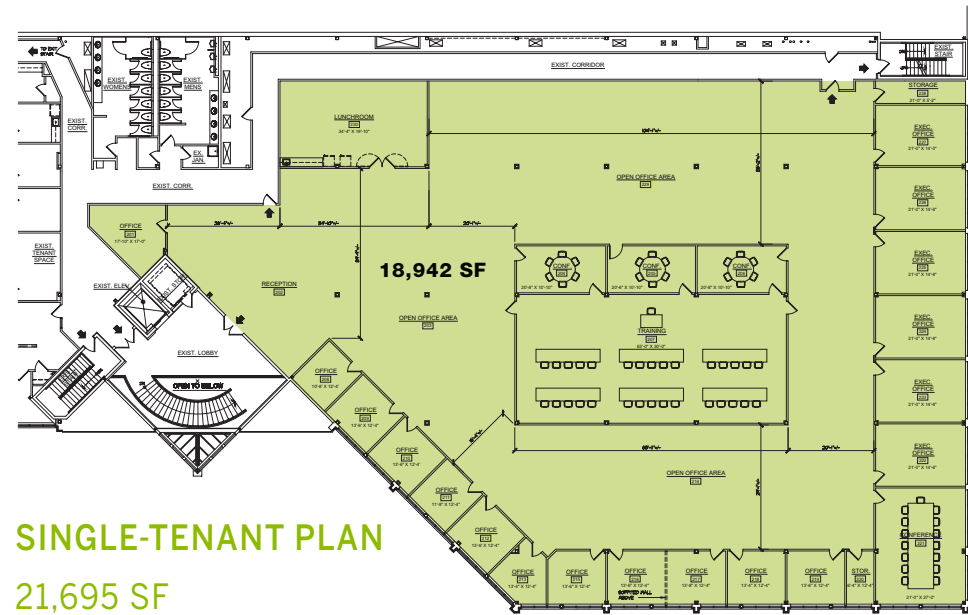


## MYLES STANDISH INDUSTRIAL PARK

350 Myles Standish Industrial Park Boulevard is currently offering Office space from 4,300 SF to 22,000 SF. Conveniently located near the main entrance of the Myles Standish Industrial Park, the largest business park in Massachusetts. The 7 million square foot park is home to over 111 companies and 8,000 employees. 350 Myles Standish enjoys a prime park location with signage opportunities and immediate access to Route 495 via Exit 9 at Bay Street.



## 350 MYLES STANDISH BOULEVARD TAUNTON, MA



### PROPERTY FACTS

|                        |                                       |
|------------------------|---------------------------------------|
| <b>Building Type</b>   | Office                                |
| <b>Year Built</b>      | 2002                                  |
| <b>Year Renovated</b>  | 2018                                  |
| <b>Building Height</b> | 2 Stories                             |
| <b>Building Size</b>   | Office 75,425 SF                      |
| <b>Floor Size</b>      | 37,500 SF                             |
| <b>Restrooms</b>       | 4 (2 per floor) ♿                     |
| <b>Elevators</b>       | 1 Bay                                 |
| <b>Parking</b>         | Surface 153 spaces   Garage 99 spaces |
| <b>EV</b>              | 4 on-site EV charging stations        |

*our property is handicap accessible*

## FOR LEASE OFFICE SUITES FROM 4,300 - 22,000 SF



# 350 MYLES STANDISH BOULEVARD TAUNTON, MA



## MYLES STANDISH INDUSTRIAL PARK

- 7 MILLION SQUARE FOOT PARK
- HOME TO OVER 111 COMPANIES
- OVER 8,000 EMPLOYEES

## AREA ATTRACTIONS

### RESTAURANTS

- Brack's Grille & Tap
- Dunkin'
- Jay Bo Cafe
- Subway
- Wendy's
- Copper Fountain Grille
- Home Plate Bay Street Grille
- The Chateau Restaurant
- Barrels & Boards

### HOTELS

- Holiday Inn Taunton - Foxboro
- Clarion - Taunton
- Extended Stay America
- Residence Inn by Marriott
- Fairfield Inn & Suites

### SHOPPING & CONVENIENCE

- Market Basket
- Tractor Supply - Home Improvement
- BJs Wholesale
- Walgreens
- CVS Pharmacy
- ATM - Bluestone Bank

### SERVICES

- Shooting Stars Daycare
- Lucky Nails & Spa

### FITNESS & RECREATION

- The Inn Fitness Health Club & Spa
- Planet Fitness
- Watson Pond State Park
- The Links at Mass Golf



325 Wood Road, Suite 202  
Braintree, MA 02184  
(781) 848-3778  
daiproperties.net

## CONVENIENT LOCATION

- 1.5 miles to Rte 495
- 6.5 miles to Rte 24
- 25 miles to Rte 128/95
- 40 miles to Boston
- 29 miles to Providence



For more information please contact

Paul Bourque at [pbourque@daiproperties.net](mailto:pbourque@daiproperties.net)

mobile: (781) 710-0903