



SILO POINT | OFFICE / RETAIL OPPORTUNITY

1200 STEUART STREET, BALTIMORE, MD 21230, BALTIMORE CITY



DAVID J. FRITZ, CCIM, SIOR
dfritz@klnb.com | 443-574-1410

STEELE STANWICK
sstanwick@klnb.com | 443-574-1420

klnb.com

HIGHLIGHTS

SILO POINT

1200 STEUART STREET, BALTIMORE, MD 21230, BALTIMORE CITY



HIP / COOL SPACE LOCATED IN LOCUST POINT

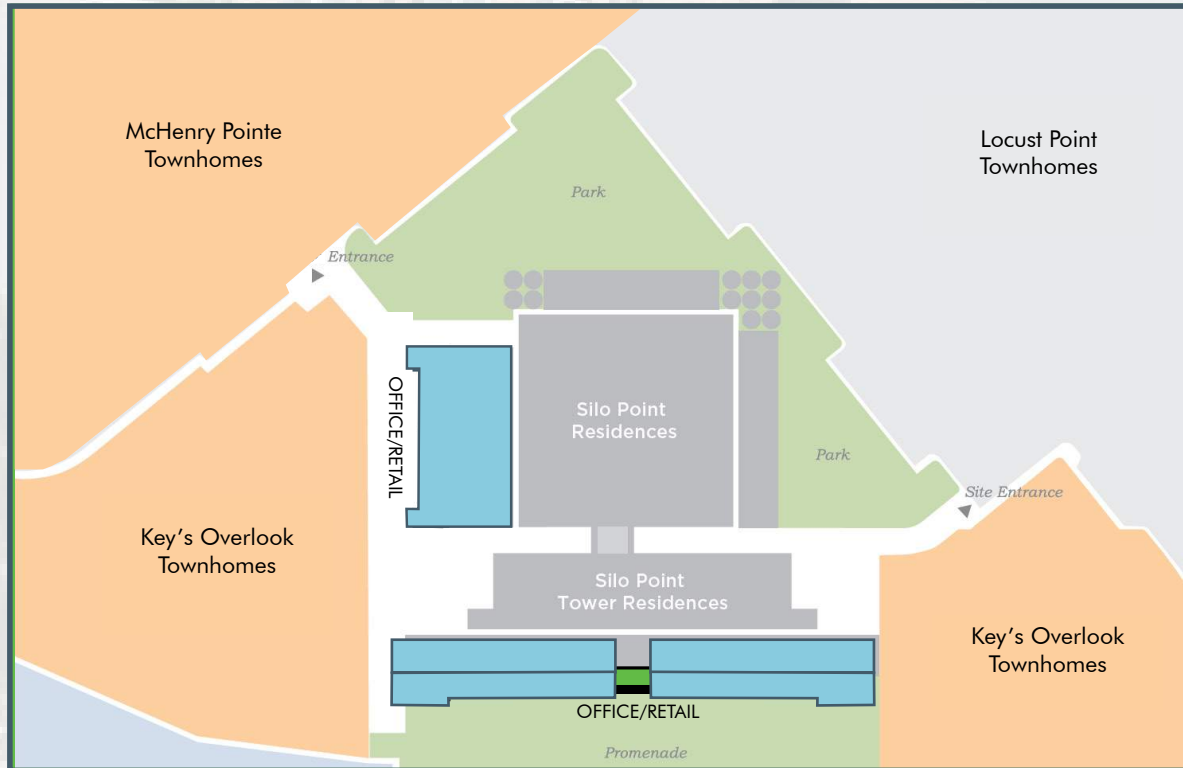
The **SILO POINT** Planned Unit Development is strategically located in the heart of Locust Point, just minutes from Baltimore's most vibrant neighborhoods and attractions, including Under Armour's Baltimore Campus and downtown Baltimore along the Inner Harbor. The project is within close proximity to Interstate 95, Baltimore-Washington Parkway, and offers convenient access to bus and water taxi transportation outlets.

Size:	Unit C-1: 4,364 RSF Unit C-2: 3,449 RSF
Year Built:	2008
Total 1st Floor:	+16,660 SF - Office/Retail Space
Term:	5 - 10 years
Rental Rate:	\$27.00, net of utilities and janitorial
Parking:	109 surface/covered reserved spaces; free employee/customer parking. Neighborhood parking does not require a parking pass and is not metered.
Location:	Professionally managed, hip Locust Point location
Amenities:	McHenry Row, Harris Teeter, RevCycle, Under Armour Gym, CorePower Yoga, Barracudas, City Limits, Little Havana, Lemongello Baltimore, Jazz+Soju, Home Maid, LP Steamers, Riverside Park
Features:	<ul style="list-style-type: none">➤ Award winning adaptive reuse mixed-use project➤ Edgy, industrial loft-style spaces with exposed cement columns➤ 25-foot ceilings➤ On-site gym, and shared conference room➤ Sky Lounge with amazing city views; available upon request➤ Floor-to-ceiling glass storefront window
PUD Summary:	<ul style="list-style-type: none">➤ Silo Point Condominiums: 228 Units➤ McHenry Pointe Townhomes: 121 Units➤ Key's Overlook Townhomes: 53 Units

SITE PLAN

SILO POINT

1200 STEUART STREET, BALTIMORE, MD 21230, BALTIMORE CITY



LOCATION

SILO POINT

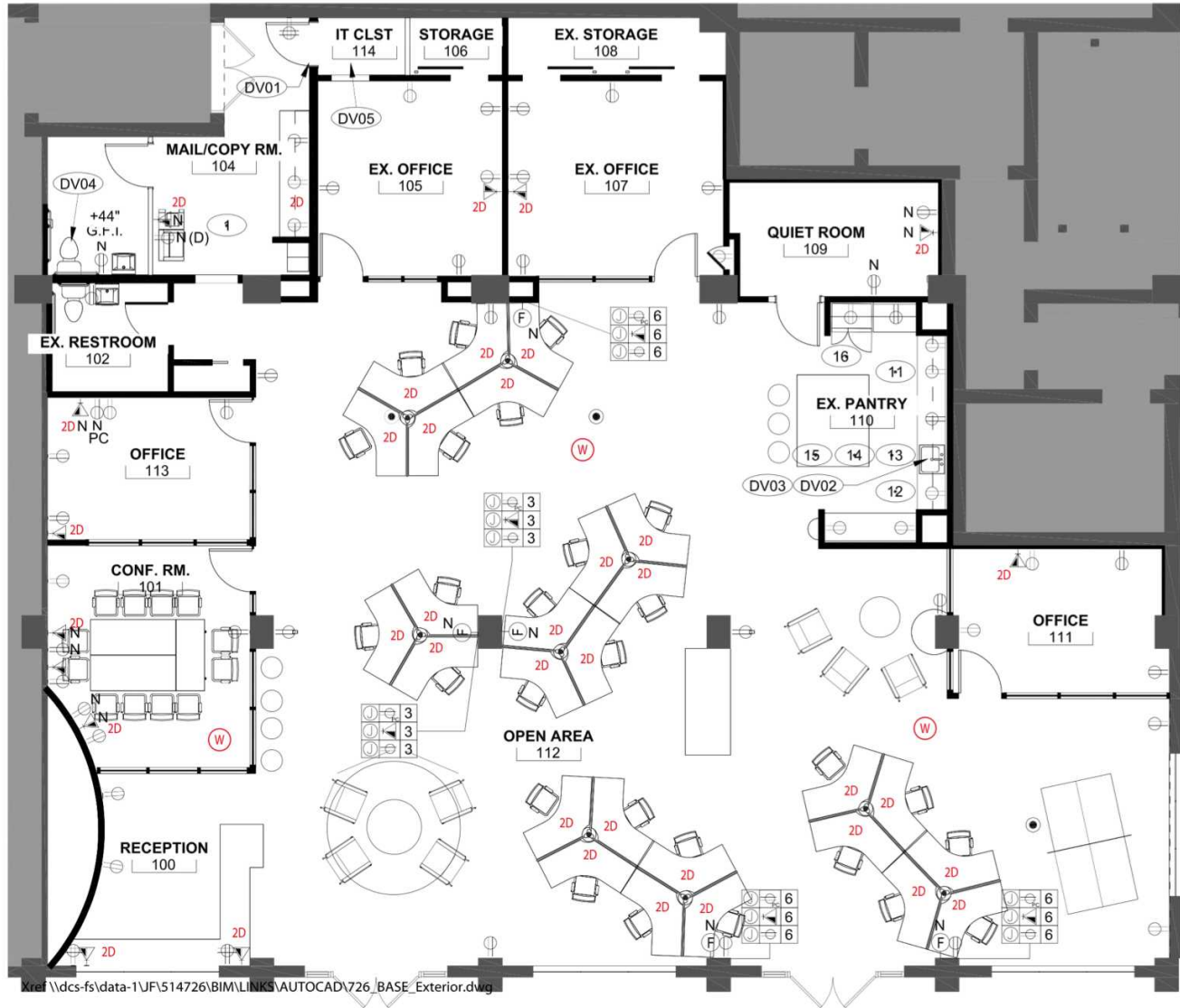
1200 STEUART STREET, BALTIMORE, MD 21230, BALTIMORE CITY



FLOOR PLAN | SILO POINT

1200 STEUART STREET, BALTIMORE, MD 21230, BALTIMORE CITY

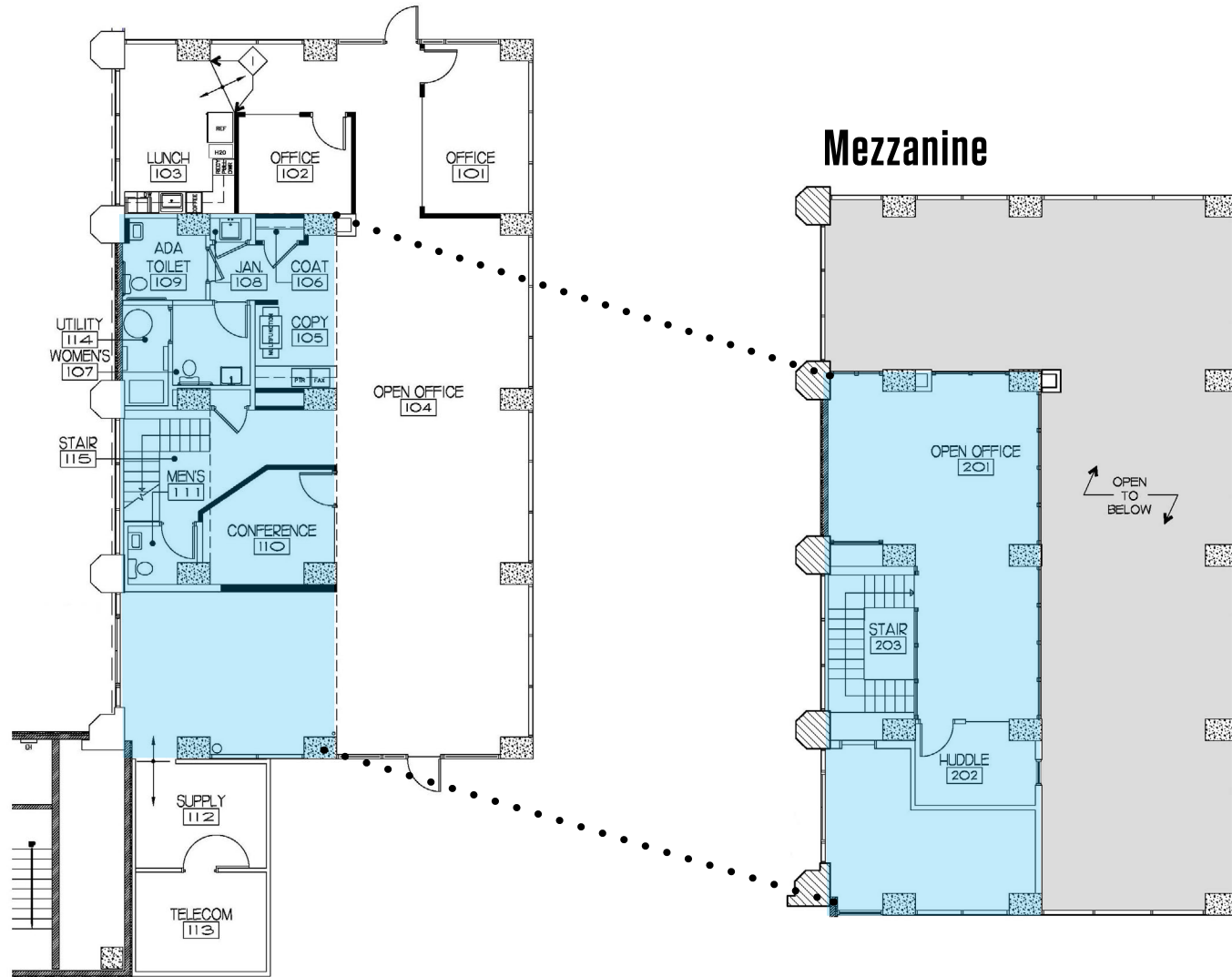
Unit-C-1
4,364 SF



FLOOR PLAN | SILO POINT

1200 STEUART STREET, BALTIMORE, MD 21230, BALTIMORE CITY

Unit-C-2
3,449 SF



PHOTOS

SILO POINT

1200 STEUART STREET, BALTIMORE, MD 21230, BALTIMORE CITY



Class A Office Space



EAGB / Economic Alliance of Greater Baltimore



ARGO Systems, LLC



Reflex Functional Fitness



Silo Point Residences

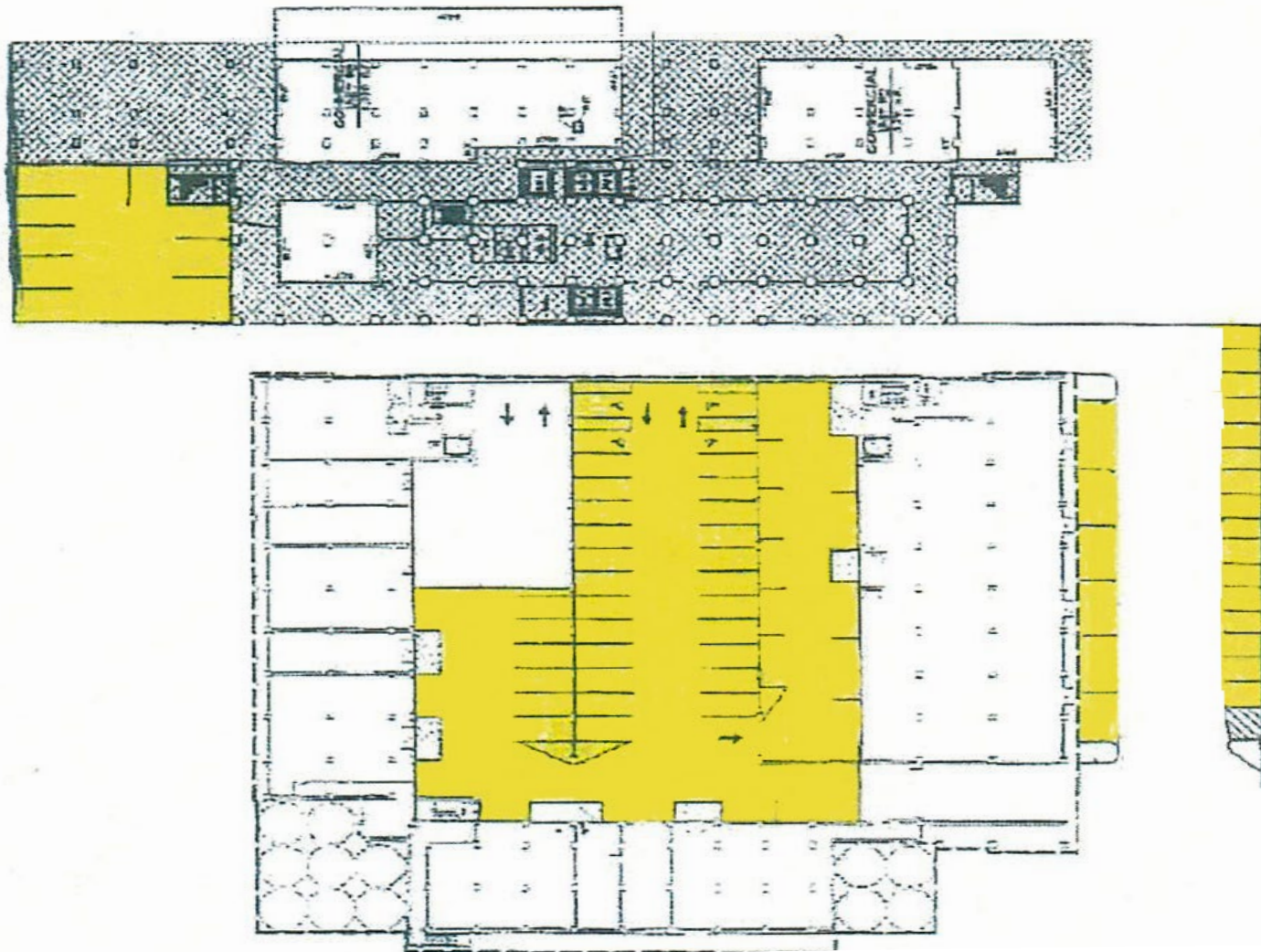


Available

PARKING

SILO POINT

1200 STEUART STREET, BALTIMORE, MD 21230, BALTIMORE CITY



FOR MORE INFORMATION, PLEASE CONTACT:

Office Inquiries

DAVID J. FRITZ, CCIM, SIOR

dfritz@klnb.com

443-574-1410

STEELE STANWICK

ssstanwick@klnb.com

443-574-1420

9881 Broken Land Parkway, Suite 300, Columbia, MD 21046



[instagram.com/klnbcre](https://www.instagram.com/klnbcre)



[linkedin.com/company/klnb](https://www.linkedin.com/company/klnb)



[facebook.com/KLNBCRE](https://www.facebook.com/KLNBCRE)

CLICK TO VIEW PROPERTY WEBSITE

klnb.com