

COMING 2022



RETAIL | RESTAURANT | PROFESSIONAL
ZONING: COMMERCIAL

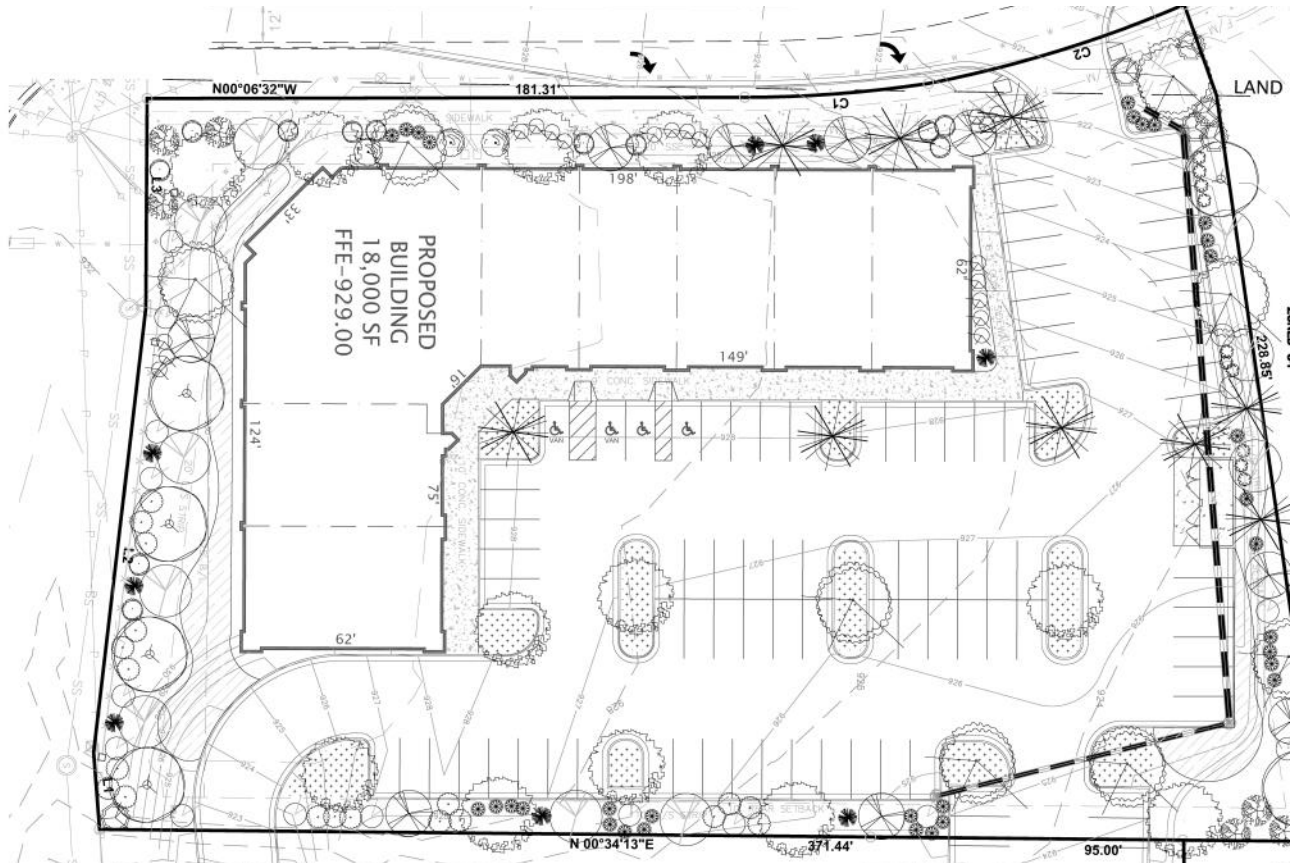
For more information

Brad Jubin
678-481-5676
Brad@EdifyCRE.com

Edify CRE, LLC
309 Roundstone Rock
Tyrone, GA 30290

STRATEGIC LOCATION

- Pin-corner location!
- Signalized intersection of HWY 34 and Timberbrook Rd
- Located between Newnan and Peachtree City
- Suites from 1,700 sq ft up to full building at 18,000 sq ft
- Property is at the entrance to a new active living residential development

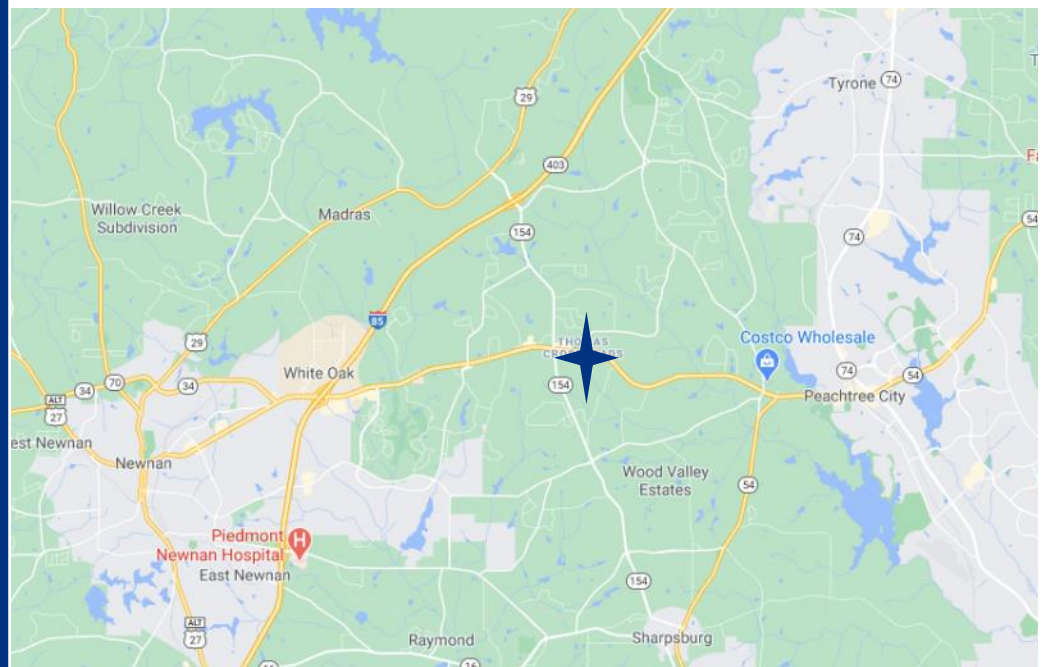


RETAIL | RESTAURANT | PROFESSIONAL SUITES FROM 1,700 SQ FT TO 18,000 SQ FT ZONING: COMMERCIAL

For more information

Brad Jubin
678-481-5676
Brad@EdifyCRE.com

Edify CRE, LLC
309 Roundstone Rock
Tyrone, GA 30290



DEMOGRAPHIC SUMMARY 1 & 3 MILE RADIUS

