



290 Fifth Avenue, 4th Floor, New York, NY 10001

Price: \$10,900 per month (\$52.32 ppsf)

Bright, full floor presence with direct elevator access. Built out with mostly open plan, one conference room, and two offices. Two private bathrooms and a kitchen. Six split unit ACs. Video intercom. Newly renovated building lobby. Be in the heart NOMAD. 2,500 sq ft



111-115 East 56th Street
New York, NY 10022
(212)-750-WALD (9253)
LICENSED REAL ESTATE BROKER

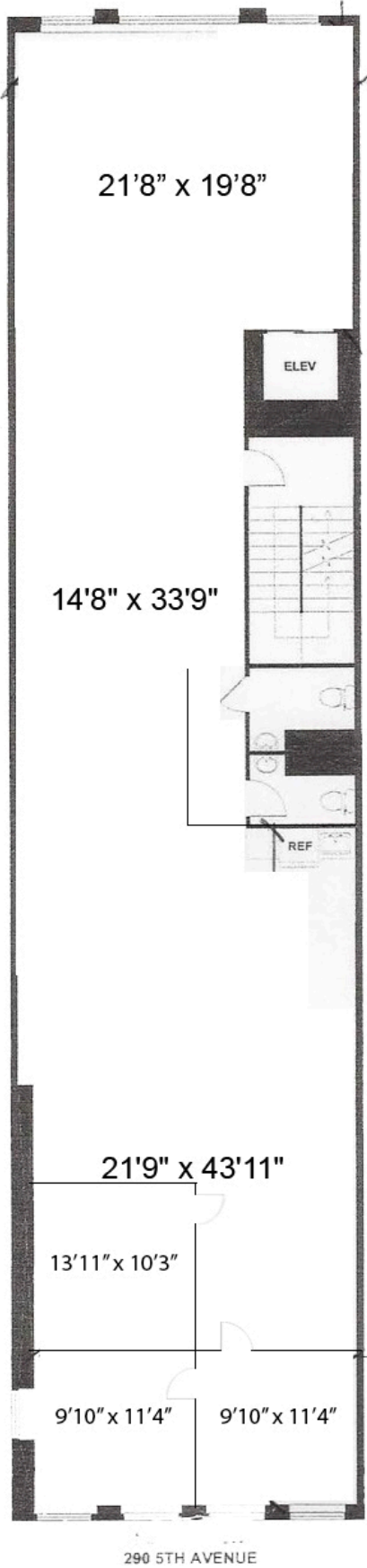


MATTHEW CHARLES NESI
Licensed Real Estate Salesperson
m.nesi@waldrealestate.com
917-375-2079



CODY PARKER HELLBERG
Licensed Assoc Real Estate Broker
c.parker@waldrealestate.com
212 729 4703


Stephen P. Wald Real Estate Associates, Inc. * 115 East 56th Street New York, NY 10022 * (212)-750-WALD (9253) * LICENSED REAL ESTATE BROKER
All information is from sources deemed reliable but is subject to errors, omissions, changes in price, prior sale or withdrawal without notice. No representation is made as to the accuracy of any description. All measurements and square footages are approximate and all information should be confirmed by customer. All rights to content, photographs and graphics are property of Wald Real Estate. You should consult with legal counsel regarding closing costs, including without limitation the New York State "Mansion Tax", 1% tax paid by buyers on residential properties over \$1 million. Wald represents the seller/landlord on our own exclusives, except if another agent of Wald represents the buyer/tenant, in which case Wald will be a dual agent with designated agents representing seller/owner and buyer/tenant.



MEASUREMENT
ARE
APPROX.

Stephen P. Wald Real Estate Associates, Inc. * 115 East 56th Street New York, NY 10022 * (212)-750-WALD (9253) * LICENSED REAL ESTATE BROKER

All information is from sources deemed reliable but is subject to errors, omissions, changes in price, prior sale or withdrawal without notice. No representation is made as to the accuracy of any description. All measurements and square footages are approximate and all information should be confirmed by customer. All rights to content, photographs and graphics are property of Wald Real Estate. You should consult with legal counsel regarding closing costs, including without limitation the New York State "Mansion Tax", 1% tax paid by buyers on residential properties over \$1 million. Wald represents the seller/landlord on our own exclusives, except if another agent of Wald represents the buyer/tenant, in which case Wald will be a dual agent with designated agents representing seller/owner and buyer/tenant.

Wald represents  the buyer/tenant when showing the exclusives of other real estate firms. Wald Real Estate complies with Fair Housing laws and supports equal housing opportunities.
[The Lombardy Hotel | 111-115 East 56th Street | New York, NY 10022 | Tel. 212.750.WALD \(9253\) | www.waldrealestate.com](http://www.waldrealestate.com)