

CHARLESTON, SC 29401

200
STREET
MEETING



Brian Connolly
brian.connolly@jll.com
202-316-4846



BUILDING OVERVIEW



Class A multi-tenant office building



Ample on-site parking in attached 355-space garage for a monthly charge



Tenant access to on-site gym with men's and women's locker rooms

SURROUND YOURSELF WITH WHAT MAKES CHARLESTON UNIQUE

From Historic Charm to Modern Office, 200 Meeting Street is a four-story Class-A office building whose location continues to be amongst the most desirable spots of downtown Charleston. The proximity to bustling downtown streets, top restaurants and abundant parking make this a hot spot for your future office.

Dating Back to the 1830's and once home the Charleston Hotel, the building features an impressive entrance, classic architectural columns and a light-filled atrium.



200
MEETING
STREET



AMENITY

Located one block north of Market Street on Meeting Street

Easy access to I-526 and Highway 17

Excellent area with proximity to restaurants, shops, and hotels

HOTELS

- 1 Grand Bohemian Hotel Charleston, Autograph Collection
- 2 Renaissance Charleston Historic District Hotel
- 3 The Restoration Charleston
- 4 Indigo Inn
- 5 Andrew Pinckney Inn
- 6 Emeline
- 7 The Jasmine House
- 8 The Charleston Place
- 9 French Quarter Inn
- 10 Meeting Street Inn
- 11 The Loutrel
- 12 The Spectator Hotel

RESTAURANTS

- 1 Starbucks
- 2 Charleston Grill
- 3 Sweetwater Cafe
- 4 J K J L K
- 5 Subway
- 6 Palmira Barbecue
- 7 Another Broken Egg Cafe
- 8 Port of Call Food + Brew Hall
- 9 Byrd's Famous Cookies - South Market
- 10 Callie's Hot Little Biscuit
- 11 The Market Bar
- 12 TBoyz Gill & Grill
- 13 Clerks Coffee Company
- 14 Charleston Wine Co.
- 15 Kilwin's Chocolates
- 16 Charleston Crab House
- 17 Mason's Famous Lobster Rolls
- 18 Pizzeria Di Giovanni
- 19 Henry's On The Market
- 20 Anson Restaurant
- 21 Cru Cafe
- 22 Hank's Seafood Restaurant
- 23 ThaiZapp Restaurant and bar
- 24 Doar Bros.
- 25 Hyman's Seafood
- 26 Aaron's Deli
- 27 FIG
- 28 Little Palm
- 29 Eleve Rooftop Restaurant & Lounge

LESS THAN 15 MILES TO THE CHARLESTON INTERNATIONAL AIRPORT

ONLY 4 MILES TO MOUNT PLEASANT

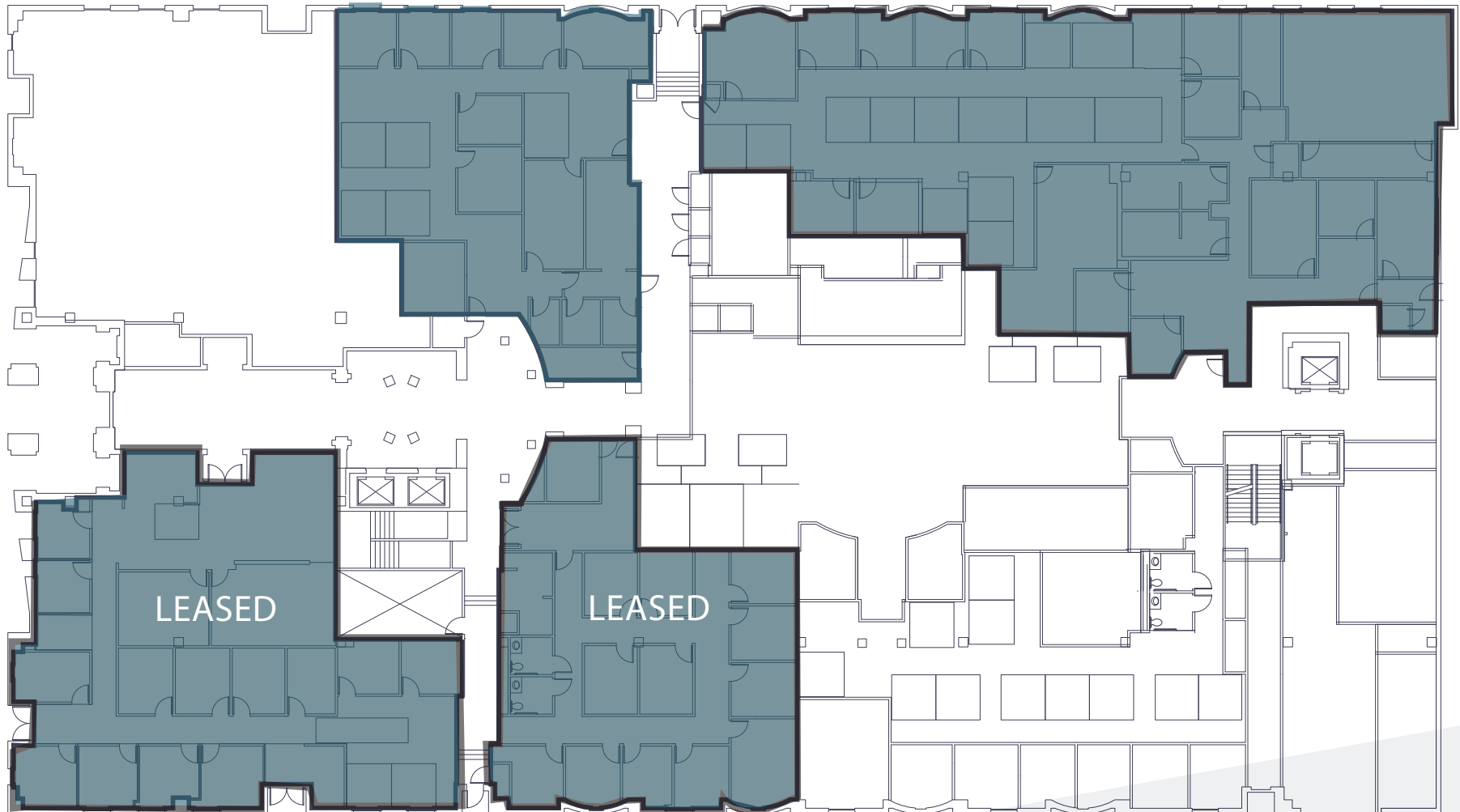


AVAILABILITY

FIRST FLOOR - 11,595 SF AVAILABLE

13 - 3,624 SF

14 - 7,971 SF



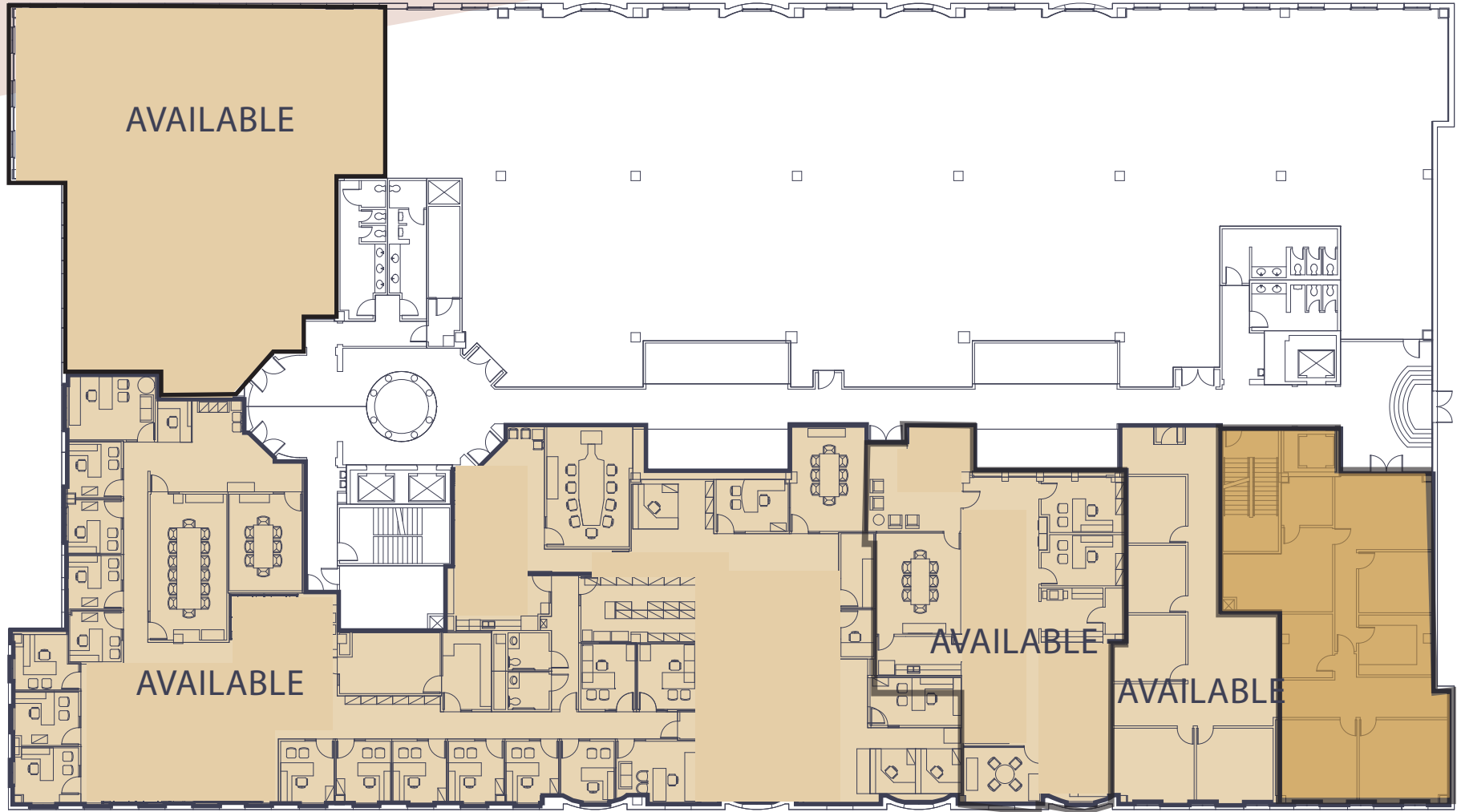
11 - 4,794 SF

12 - 3,719 SF

AVAILABILITY

SECOND FLOOR - 25,720 SF AVAILABLE

202 - 5,623 SF



201 - 15,263

204 -
3,108 SF

205 -
1,726 SF

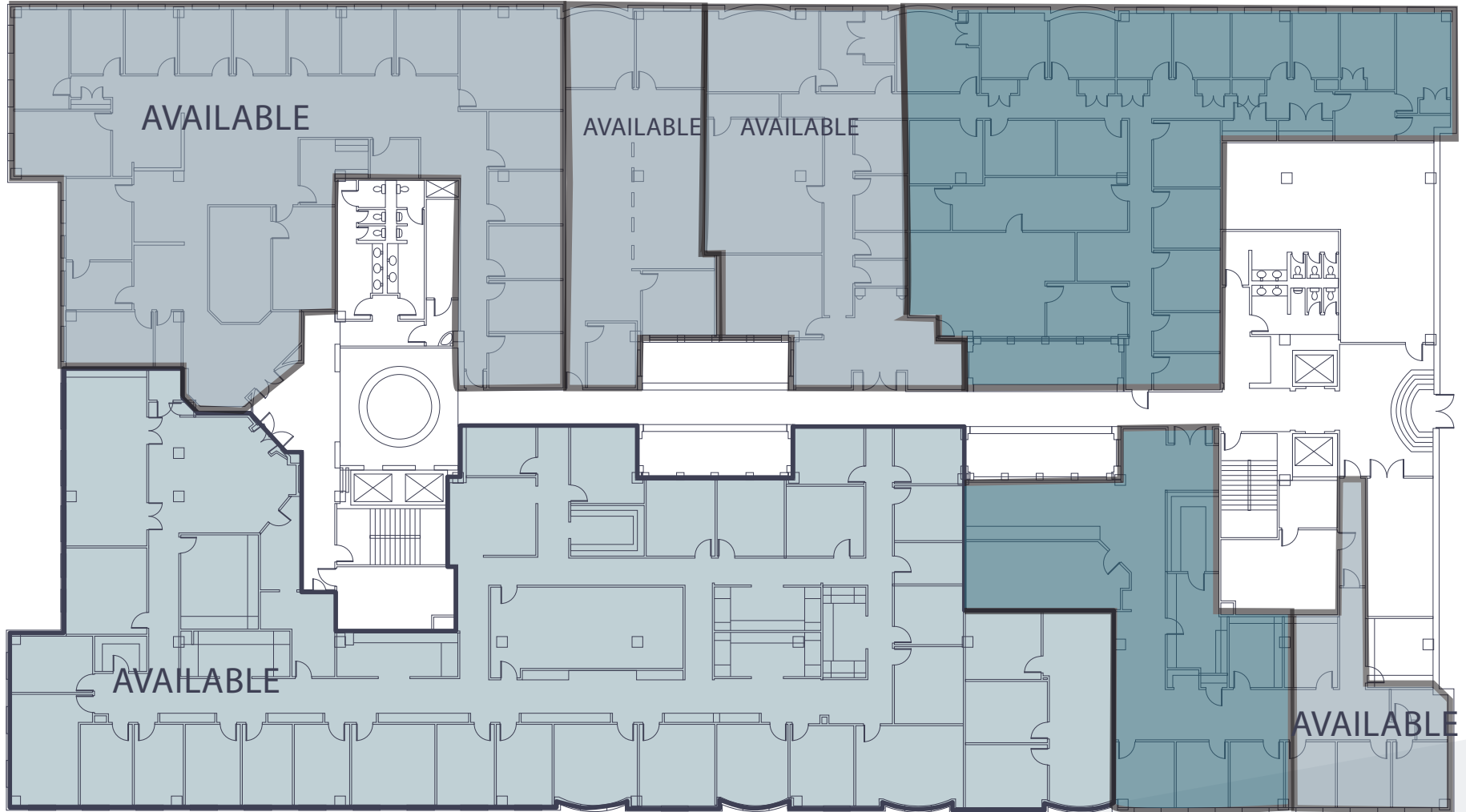
207 -
1,824 SF

AVAILABILITY

THIRD FLOOR - 27,194 SF AVAILABLE

302 - 6,713 SF

303 - 2,643 SF 304 - 2,587 SF



301 - 14,011 SF

305 -
2,782 SF

307 -
1,240 SF

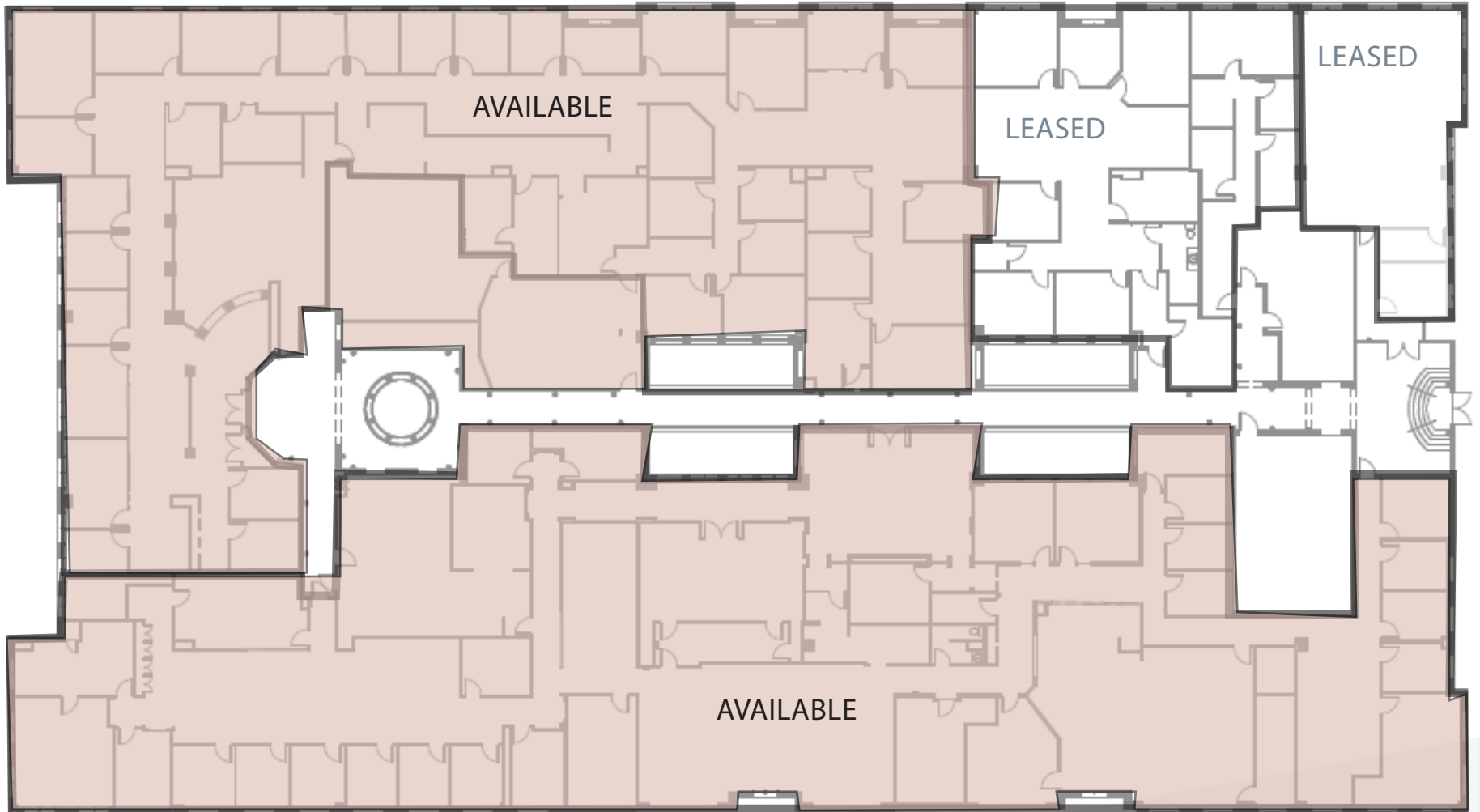
AVAILABILITY

FOURTH FLOOR - 32,658 SF AVAILABLE

400 - 14,414 SF

402

403



401 - 18,244 SF

OCEANSIDE RESORTS INC. PROPERTY MANAGEMENT

Through intelligent acquisition and management of signature properties in prime locations, Oceanside Resorts, Inc. has developed an enviable and valuable portfolio of real estate holdings. Oceanside's commercial, hotel and retail holdings stretch from Miami Beach, Florida to Boston, Massachusetts. Oceanside employs commercial, hotel and retail property management professionals that can provide advice in areas such as lease administration, property accounting, budget preparation, hotel and office operations and technical services. Oceanside's philosophy is to maximize profits and value through long-term ownership and "hands-on" management. In addition to individual ownership, Oceanside has the human capital to add value as a manager or a joint venture partner.

Brian Connolly
brian.connolly@jll.com
202-316-4846

Although information has been obtained from sources deemed reliable, neither Owner nor JLL makes any guarantees, warranties or representations, express or implied, as to the completeness or accuracy as to the information contained herein. Any projections, opinions, assumptions or estimates used are for example only. There may be differences between projected and actual results, and those differences may be material. The Property may be withdrawn without notice. Neither Owner nor JLL accepts any liability for any loss or damage suffered by any party resulting from reliance on this information. If the recipient of this information has signed a confidentiality agreement regarding this matter, this information is subject to the terms of that agreement. ©2022. Jones Lang LaSalle IP, Inc. All rights reserved.

