



OFFICE SPACE IN DOWNTOWN SHREVEPORT FOR LEASE

800 SPRING ST., UNIT 213, SHREVEPORT, LA 71101

- Unit 213
- 545 sq.ft.
- Utilities included:
Electricity, water, housekeeping
- Market rent: \$750
- \$30 application fee
- Additional lease information: First two months free with a three-year lease



For more information, contact:

Luke Nicholls | 318-222-2244

lnicholls@vintagemultifamily.com | vintagerealty.com

All information contained herein is believed to be accurate, but is not warranted and no liability of errors or omissions is assured by either the property owner or Vintage Realty Company or its agents and employees. Prices as stated herein and product availability is subject to change and/or sale or lease without prior notice, and all sizes and dimensions are subject to correction. Rev 1/2025



OFFICE SPACE FOR LEASE

800 SPRING STREET
SHREVEPORT, LA 71101



For more information, contact:

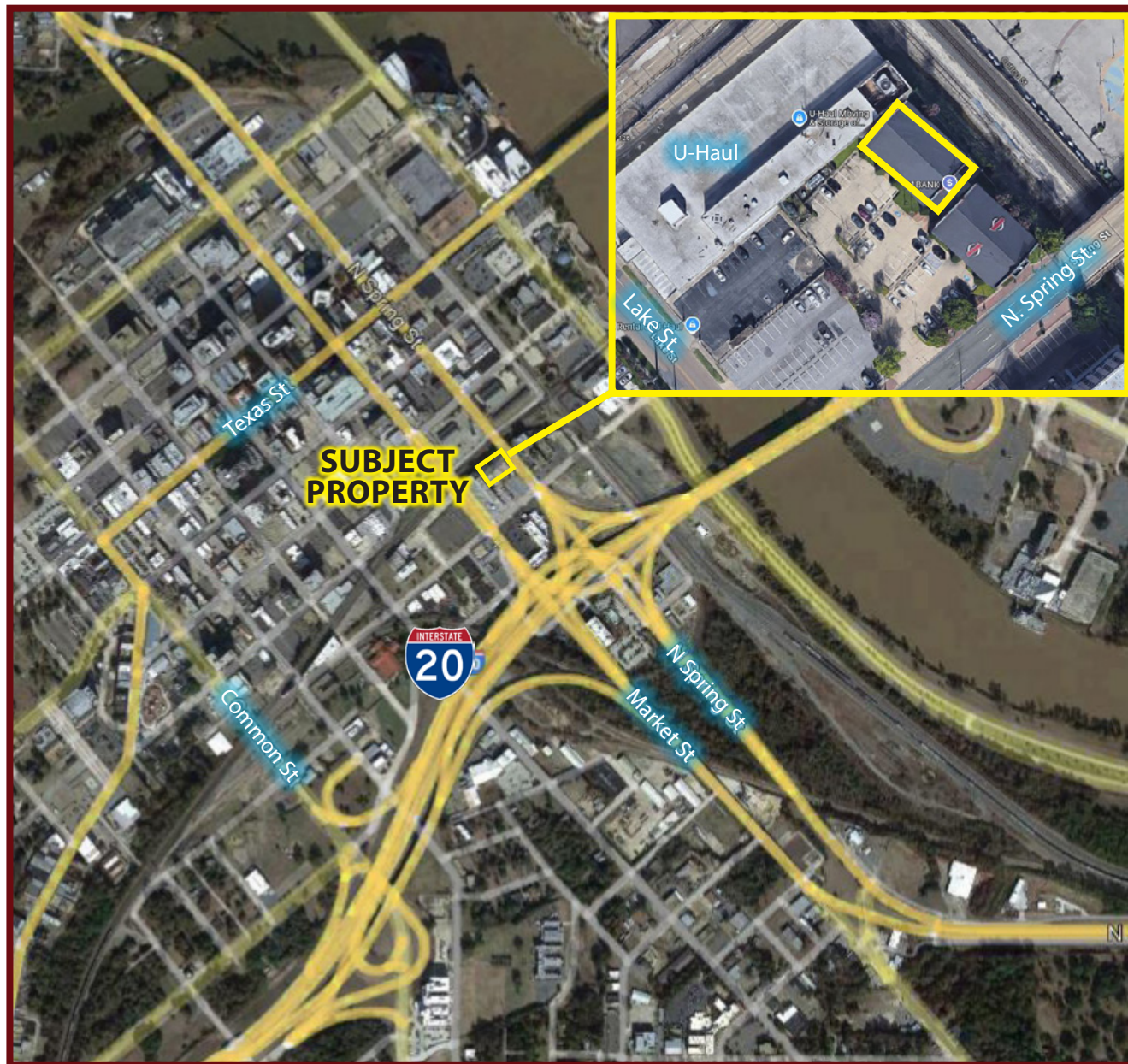
Luke Nicholls | 318-222-2244

lnicholls@vintagemultifamily.com | vintagerealty.com

ALL INFORMATION CONTAINED HEREIN IS BELIEVED TO BE ACCURATE, BUT IS NOT WARRANTED AND NO LIABILITY OF ERRORS OR OMISSIONS IS ASSURED BY EITHER THE PROPERTY OWNER OR VINTAGE REALTY COMPANY OR ITS AGENTS AND EMPLOYEES. PRICES AS STATED HEREIN AND PRODUCT AVAILABILITY IS SUBJECT TO CHANGE AND/OR SALE OR LEASE WITHOUT PRIOR NOTICE, AND ALL SIZES AND DIMENSIONS ARE SUBJECT TO CORRECTION. 1/2025

OFFICE SPACE FOR LEASE

800 SPRING STREET
SHREVEPORT, LA 71101



For more information, contact:

Luke Nicholls | 318-222-2244

lnicholls@vintagemultifamily.com | vintagerealty.com

ALL INFORMATION CONTAINED HEREIN IS BELIEVED TO BE ACCURATE, BUT IS NOT WARRANTED AND NO LIABILITY OF ERRORS OR OMISSIONS IS ASSURED BY EITHER THE PROPERTY OWNER OR VINTAGE REALTY COMPANY OR ITS AGENTS AND EMPLOYEES. PRICES AS STATED HEREIN AND PRODUCT AVAILABILITY IS SUBJECT TO CHANGE AND/OR SALE OR LEASE WITHOUT PRIOR NOTICE, AND ALL SIZES AND DIMENSIONS ARE SUBJECT TO CORRECTION. 1/2025