



1001 RECTORY LANE
Baltimore, Maryland 21211

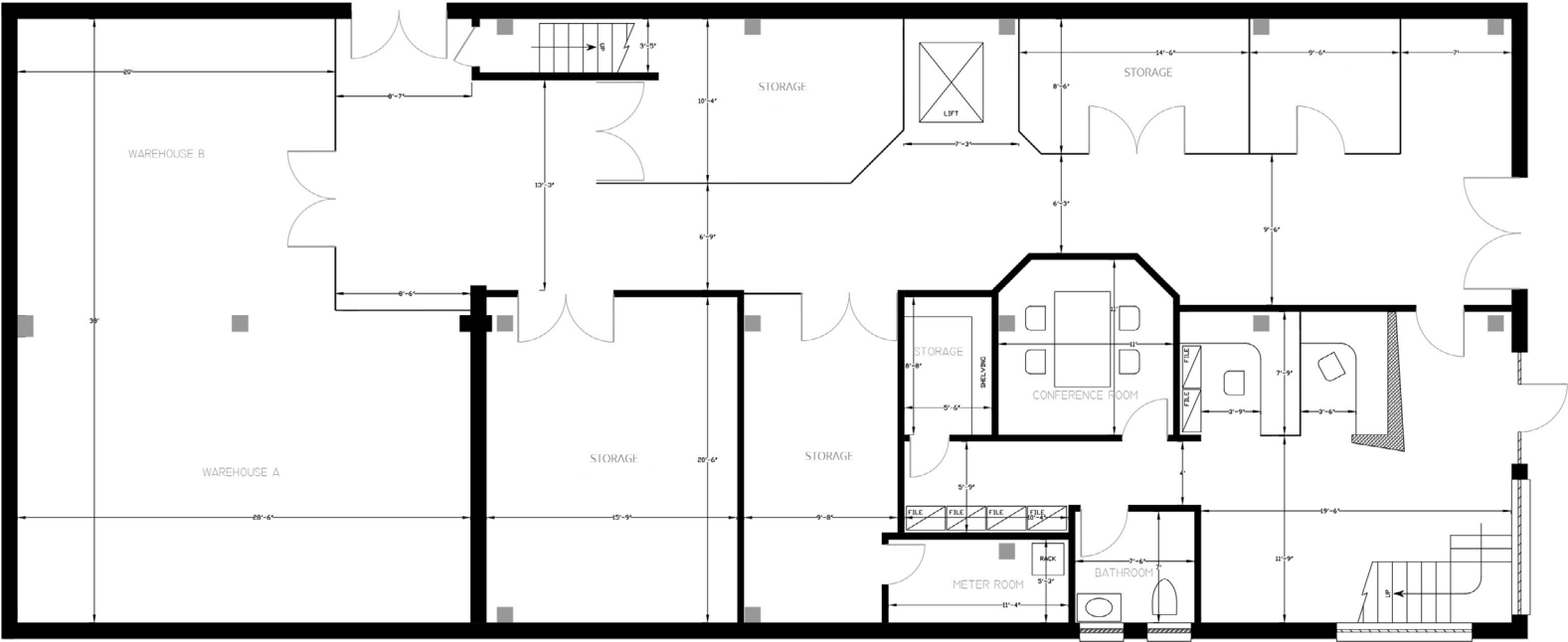


1001 RECTORY LANE

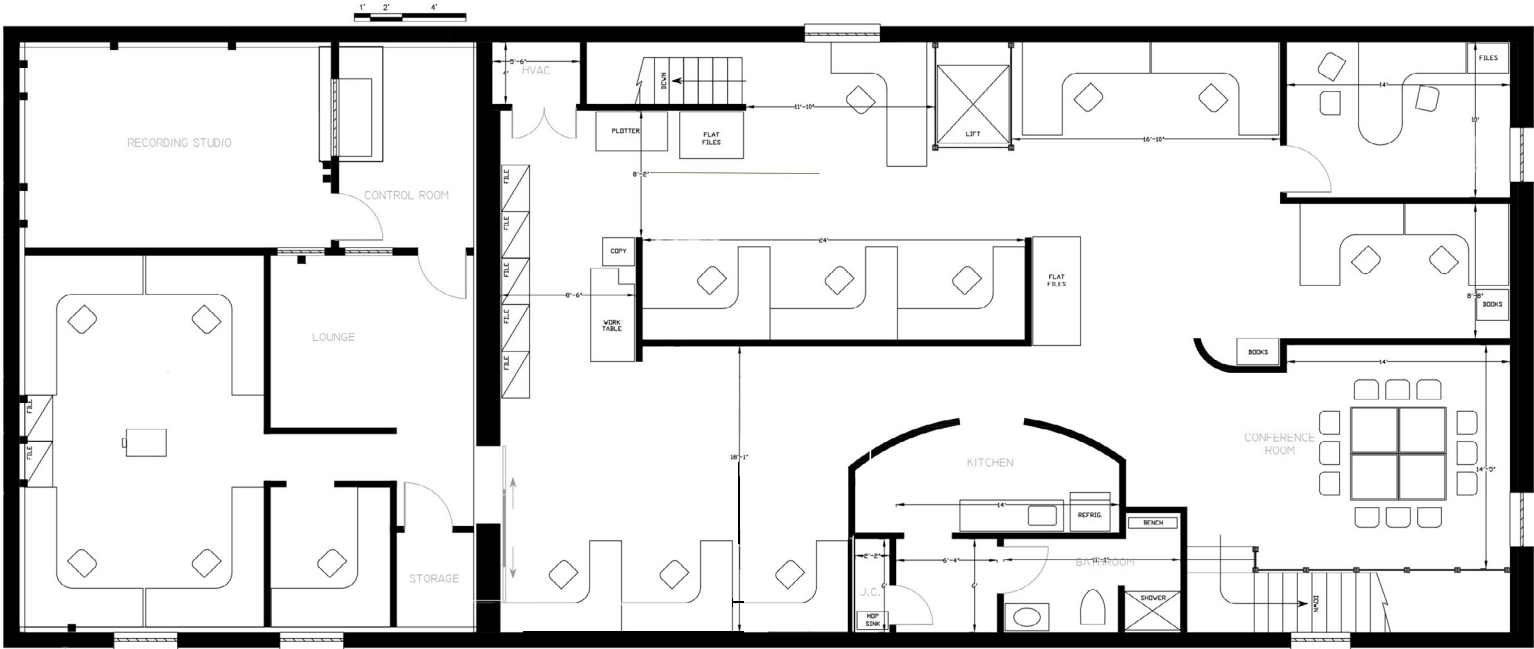
- TWO-STORY, FREESTANDING FLEX/OFFICE BUILDING CONSISTING OF +/-8,804 SF
- LOT SIZE CONSISTING OF +/-9,000 SF
- HIGH LEVEL DESIGN INCLUDING ARCHITECTURAL ELEMENTS BY LOCAL ARTISANS & CRAFTSMEN
- WALKING DISTANCE TO AMENITIES INCLUDING MANY LOCAL RESTAURANTS AND SHOPS.
- ONE (1) AT-GRADE LOADING DOOR
- DEDICATED PERVIOUS PARKING AREA FOR 20 VEHICLES
- EASY ACCESS TO I-83; MINUTES TO DOWNTOWN BALTIMORE TO THE SOUTH AND I-695 TO THE NORTH.



**1ST
FLOOR
PLAN**



**2ND
FLOOR
PLAN**



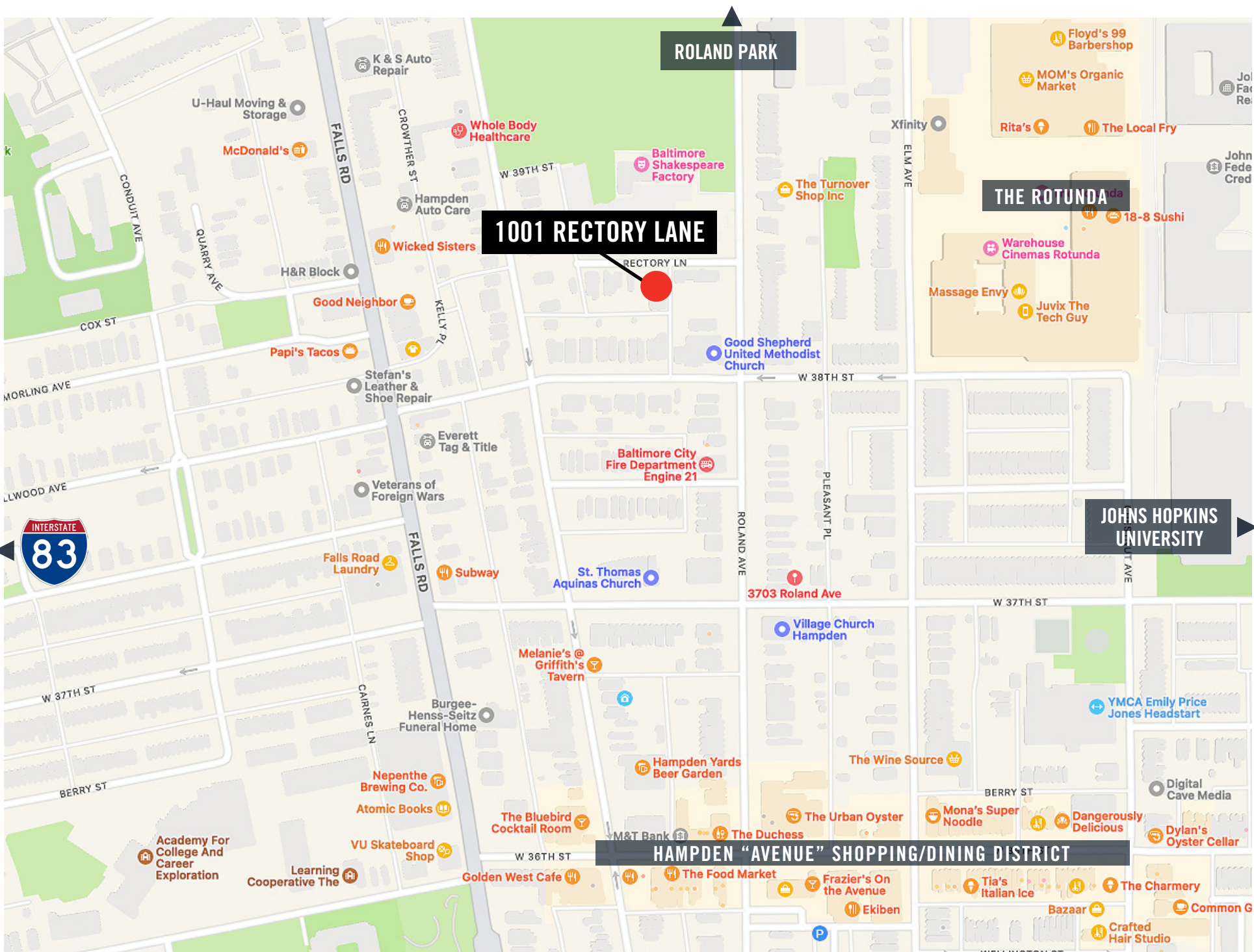












ROLAND PARK

1001 RECTORY LANE

THE ROTUNDA

JOHNS HOPKINS UNIVERSITY

HAMPDEN "AVENUE" SHOPPING/DINING DISTRICT



Contacts:

Brian Siegel, SIOR

Executive Vice President
+1 410 319 2410
Brian.Siegel@colliers.com

Jason Sullivan, SIOR

Executive Vice President
+1 410 319 2409
Jason.Sullivan@colliers.com

Colliers International

7001 Columbia Gateway Drive
Suite 220
Columbia, MD 21046
P: +1 410 319 2411

This document has been prepared by Colliers International for advertising and general information only. Colliers International makes no guarantees, representations or warranties of any kind, expressed or implied, regarding the information including, but not limited to, warranties of content, accuracy and reliability. Any interested party should undertake their own inquiries as to the accuracy of the information. Colliers International excludes unequivocally all inferred or implied terms, conditions and warranties arising out of this document and excludes all liability for loss and damages arising there from. This publication is the copyrighted property of Colliers International and/or its licensor(s). ©2021. All rights reserved.