

4750 Tilghman Street Allentown, PA 18104



DIVISIBLE New Retail Space - Up to 8,000 SF or 4,000 SF

Key Features

- New Construction
- Retail Space
- Divisible - To 1,700 SF
- Ample Parking
- Private Entrances
- Exterior Signage
- Marquee Signage
- Other Major Tenants in Building

Location

Lehigh County: Close To Route 309, Route 22 And the Pennsylvania Turnpike, Lehigh Valley Exit

Zoning

Highway Commercial

Lease Rate

Call For Rate - NNN

**For more information,
please contact**

Ann Kline
610.295.6602
akline@MarkwardGroup.com

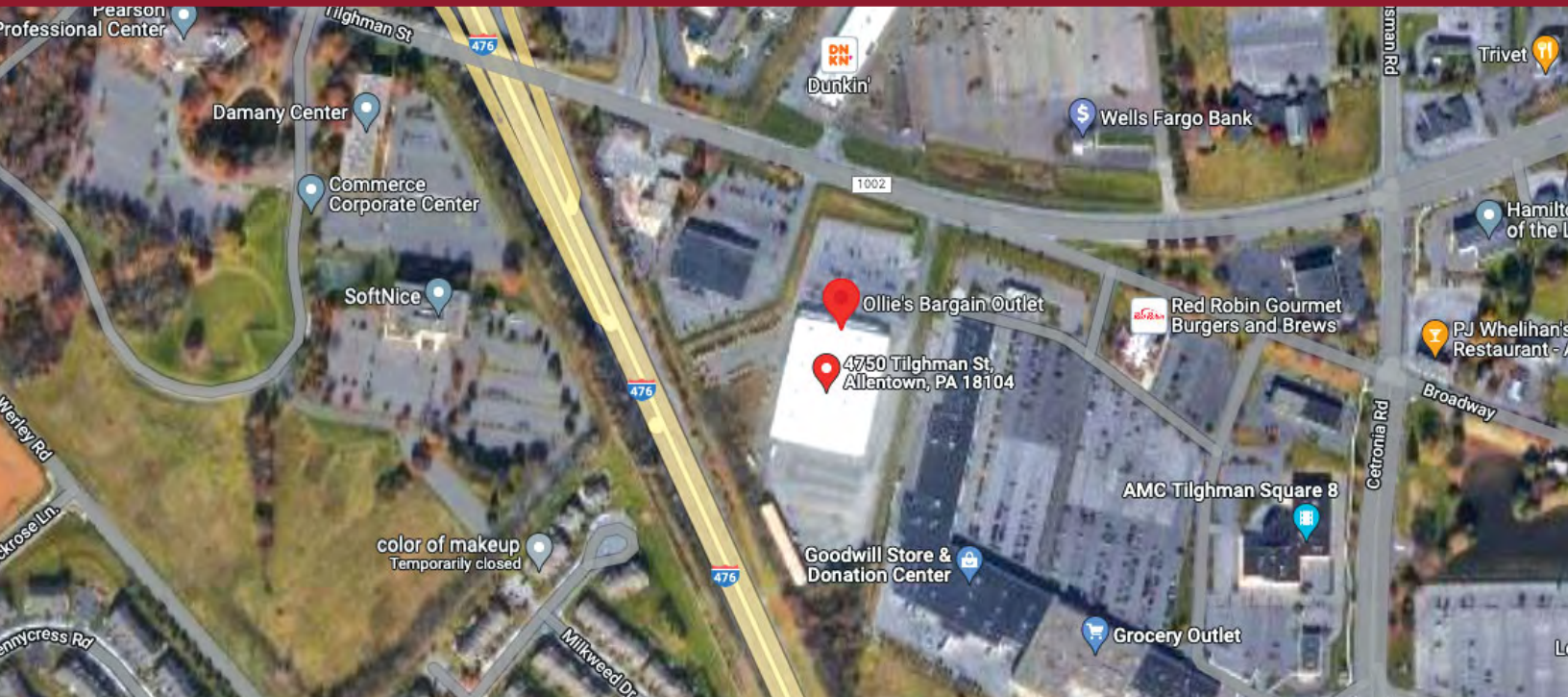
Chip Miers
610.295.6604
cmiers@markwardgroup.com

Del Markward, SIOR
dmarkward@MarkwardGroup.com

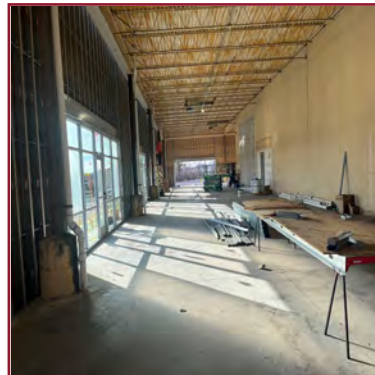
Markward Group
5925 Tilghman Street, Suite 900
Allentown, PA 18104
p: 610.295.6600 | f: 610.295.6601
MarkwardGroup.com



4750 Tilghman Street Allentown, PA 18104



Divisible New Retail Space - Up to 8,000 SF or 4,000 SF



**For more information,
please contact**

Ann Kline
610.295.6602
akline@MarkwardGroup.com

Chip Miers
610.295.6604
cmiers@markwardgroup.com

Del Markward, SIOR
dmarkward@MarkwardGroup.com

Markward Group
5925 Tilghman Street, Suite 900
Allentown, PA 18104
p: 610.295.6600 | f: 610.295.6601
MarkwardGroup.com

