

West Valley Corporate Center

9200 OAKDALE AVENUE,
CHATSWORTH, CA





Property Highlights



CLASS A OFFICE
SPACE



FLEXIBLE
SUITE OPTIONS
FROM 7,216 TO
27,184 ±RSF



ASKING RATE
\$3.15 FSG



5/1,000 PARKING
RATIO



ON-SITE
CAFE



OVERVIEW

West Valley Corporate Center at 9200 Oakdale Ave offers premium Class A office space with stunning views and modern amenities. Available suites range from 7,216 to 27,184 ±RSF, priced at \$3.15 RSF full service gross. The building features abundant parking, including free unreserved spots, EV charging stations, and secure underground executive parking. Tenants benefit from a central location, on-site cafe, and easy access to surrounding amenities, making it an ideal choice for businesses seeking a professional and convenient workspace.

Building Features



PARKING

5.0/1,000 SF unreserved parking available; free of charge

CHARGING STATIONS

Eight (8)

EXECUTIVE PARKING

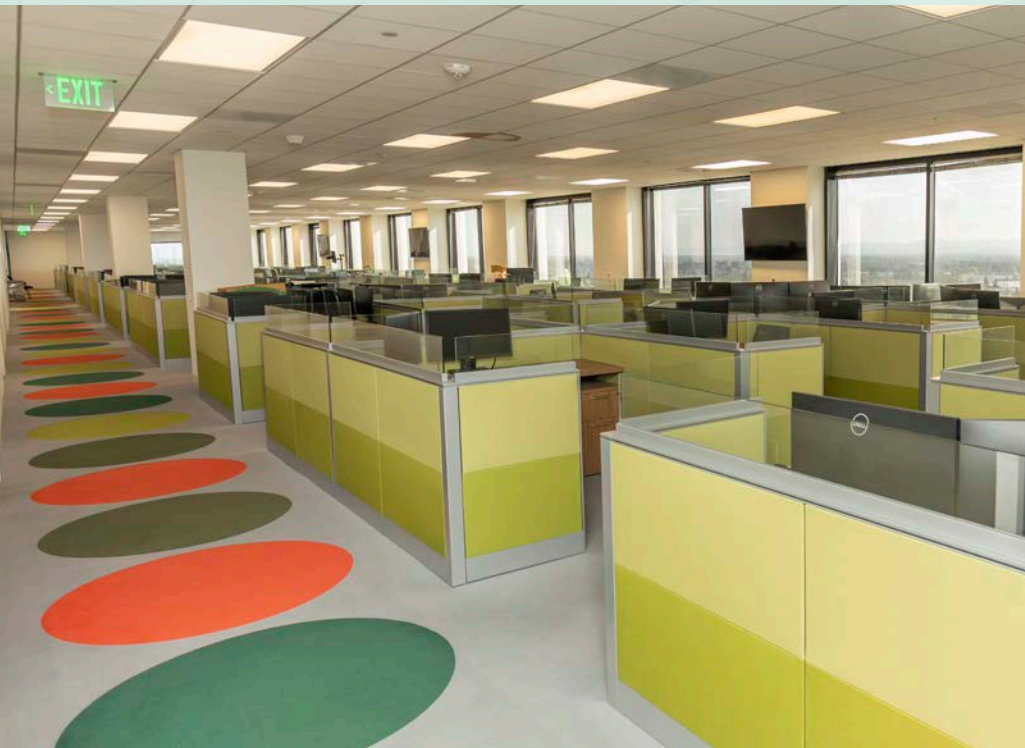
Secured, underground with direct elevator access to the suites

OTHER AMENITIES

- On-site cafe
- Incredible views
- Abundant surrounding amenities



Plug & Play Opportunity





10TH FLOOR



20,352 ±RSF

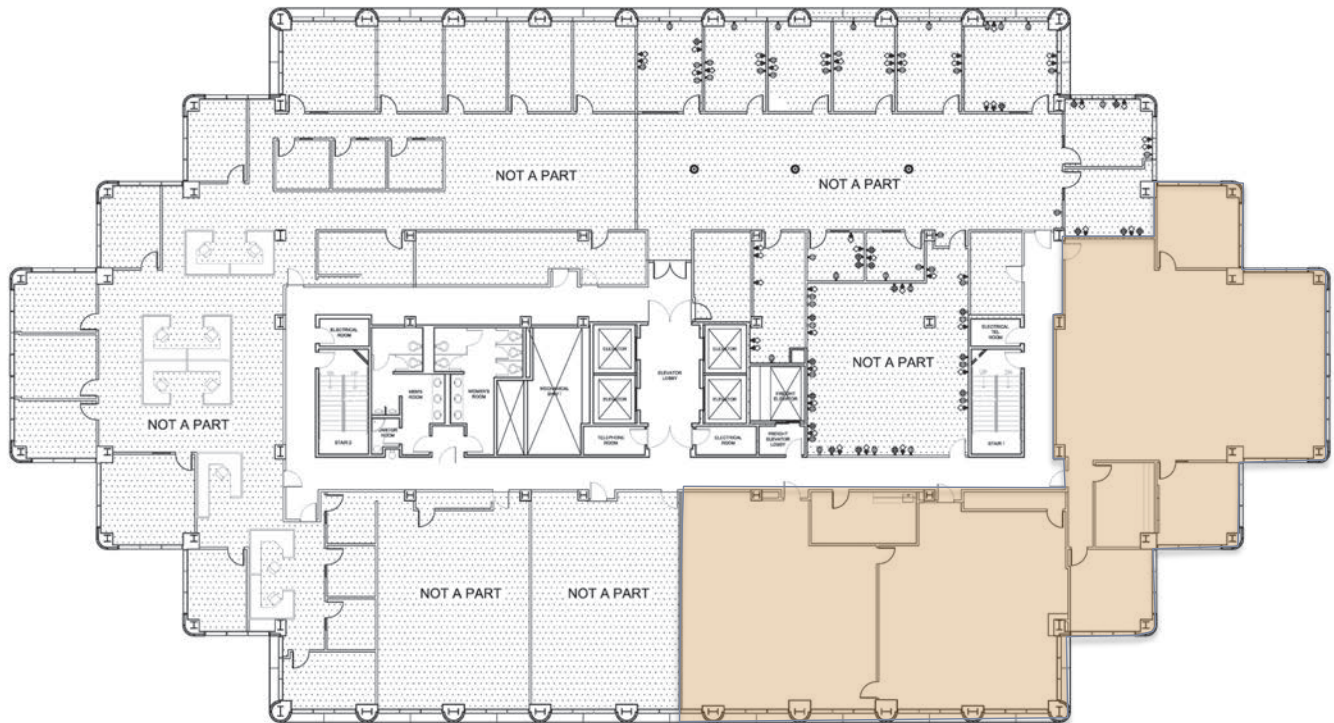


FURNITURE
INCLUDED



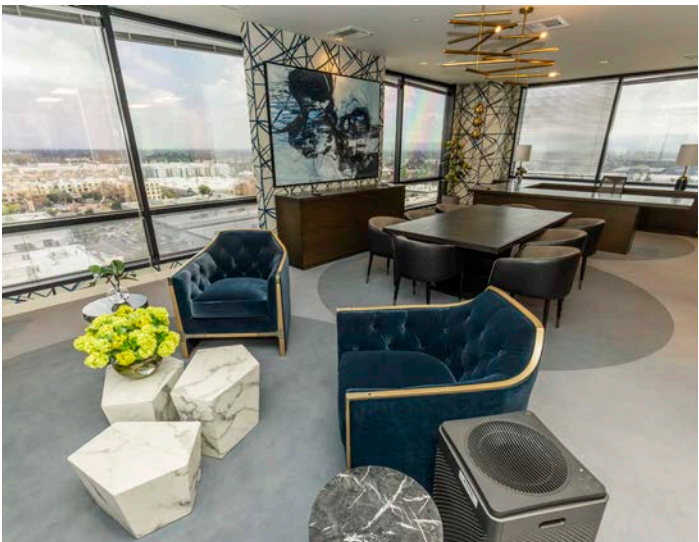
Floor Plans

7TH FLOOR (7,216 ±RSF)



6TH FLOOR (27,184 ±RSF)

FLOORPLAN COMING SOON!





JIM LINDVALL
Managing Director
Lic. #01012372
+1 818 531 9678
jim.lindvall@jll.com

CHLOE SANCHEZ
Senior Associate
Lic. #02109571
+1 747 234 3553
chloe.sanchez@jll.com



Although information has been obtained from sources deemed reliable, JLL does not make any guarantees, warranties or representations, express or implied, as to the completeness or accuracy as to the information contained herein. Any projections, opinions, assumptions or estimates used are for example only. There may be differences between projected and actual results, and those differences may be material. JLL does not accept any liability for any loss or damage suffered by any party resulting from reliance on this information. If the recipient of this information has signed a confidentiality agreement with JLL regarding this matter, this information is subject to the terms of that agreement. ©2025 Jones Lang LaSalle Brokerage, Inc. All rights reserved.