

# AIRPORT CORPORATE CENTER

MEDICAL/OFFICE SPACE FOR LEASE



9568, 9616, 9674 ARCHIBALD AVENUE | RANCHO CUCAMONGA, CA 91730

## MASON WILSON

Associate  
951.276.3603  
mwilson@lee-associates.com  
DRE #02163918

## JOSEPH PIERIK

Vice President  
951.276.3685  
jpierik@lee-associates.com  
DRE #02144961

## ANDREW PEAKE

Senior Vice President/Managing Partner  
951.276.3644  
apeake@lee-associates.com  
DRE #01398894

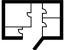
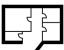


**LEE & ASSOCIATES**  
COMMERCIAL REAL ESTATE SERVICES

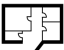
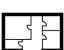
No warranty or representation has been made to the accuracy of the foregoing information. Terms of sale or lease and availability are subject to change or withdrawal without notice. Lee & Associates Commercial Real Estate Services, Inc. - Riverside. 4193 Flat Rock Drive, Suite 100 - Riverside, CA 92505 | Corporate ID# 01048055

# AVAILABILITIES

## 9568 ARCHIBALD AVE | BUILDING SQUARE FOOTAGE ±24,714 SF

Suite	Sq. Ft.	Lease Rate	Description	Video	Floor Plan
100	±10,084 SF	\$2.35/SF MG	Reception, 5 private offices, conference room, training room, large bullpen, IT closet, two restrooms		
110	±4,787 SF	\$2.35/SF MG	Reception, 2 conference rooms, open bullpen, 2 restrooms		

## 9616 ARCHIBALD AVE | BUILDING SQUARE FOOTAGE ±25,539 SF

Suite	Sq. Ft.	Lease Rate	Description	Video	Floor Plan
100	±9,000 SF	\$2.35/SF MG	Oversized reception, 7 private offices, training room, kitchen, copy room, IT closet, bullpen, 2 restrooms		
200	±7,275 SF	\$2.35/SF MG	Shell condition, entire second floor, elevator served, 2 exposures		

# PROPERTY HIGHLIGHTS

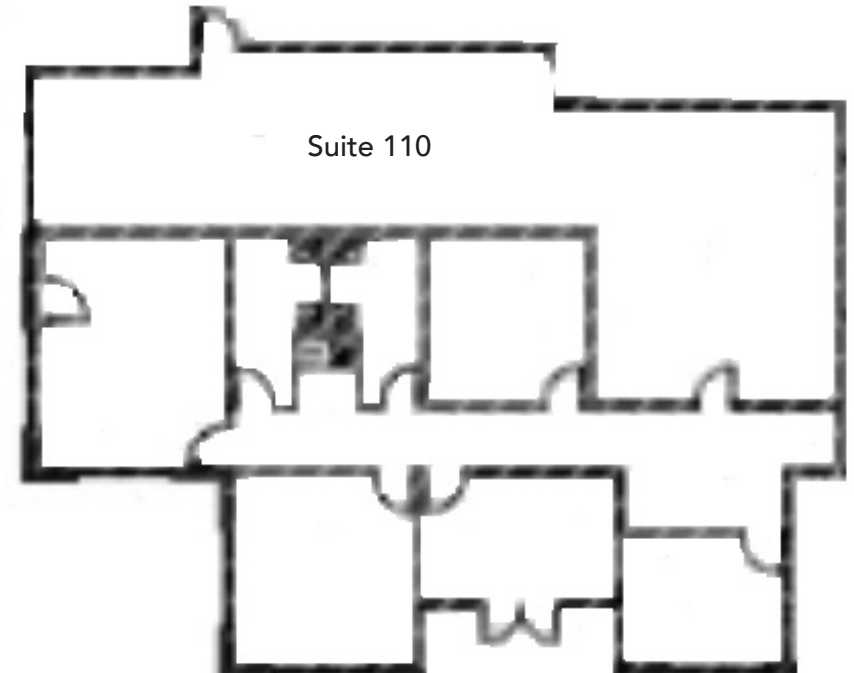
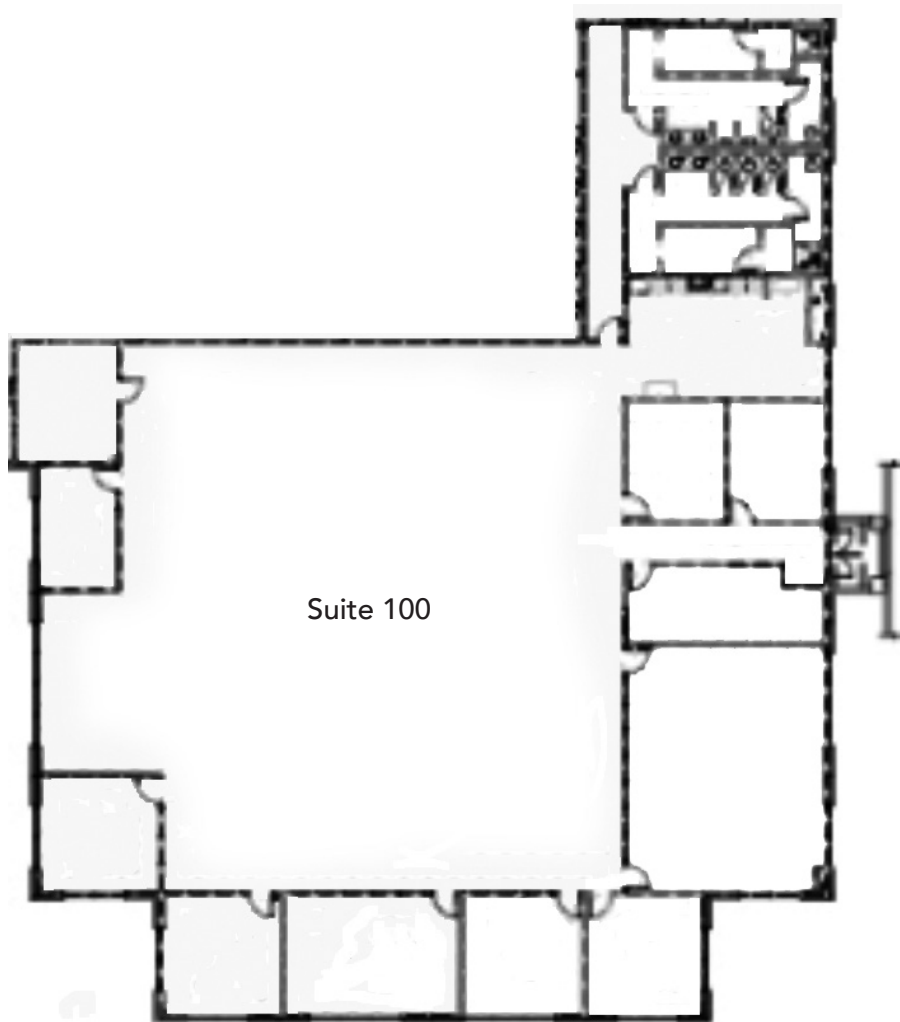
- » Airport Corporate Center is a 3-Building Office/Medical Center
- » Ideal for office and medical use
- » Ample parking
- » Desirable commercial corridor in Rancho Cucamonga, CA
- » Centrally located near retail and restaurant amenities
- » Immediately north of I-10 Freeway
- » Easy connection to the 15, 57, 60 and 210 Freeways
- » Minutes to Ontario Mills, TopGolf, and Victoria Gardens
- » Central location between four counties: Los Angeles, Orange, Riverside and San Bernardino Counties



Mason Wilson, 951.276.3603, [mwilson@lee-associates.com](mailto:mwilson@lee-associates.com), DRE 02163918  
Joseph Pierik, 951.276.3685, [jpierik@lee-associates.com](mailto:jpierik@lee-associates.com), DRE 02144961  
Andrew Peake, 951.276.3644, [apeake@lee-associates.com](mailto:apeake@lee-associates.com), DRE 01398894



# 9568 FLOOR PLAN



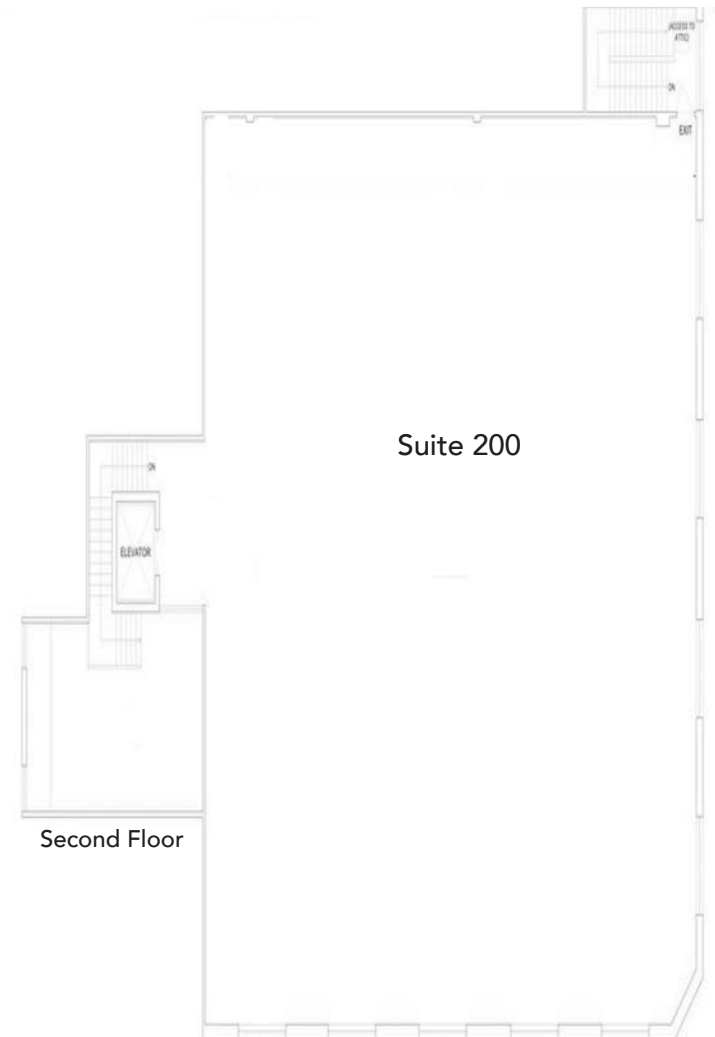
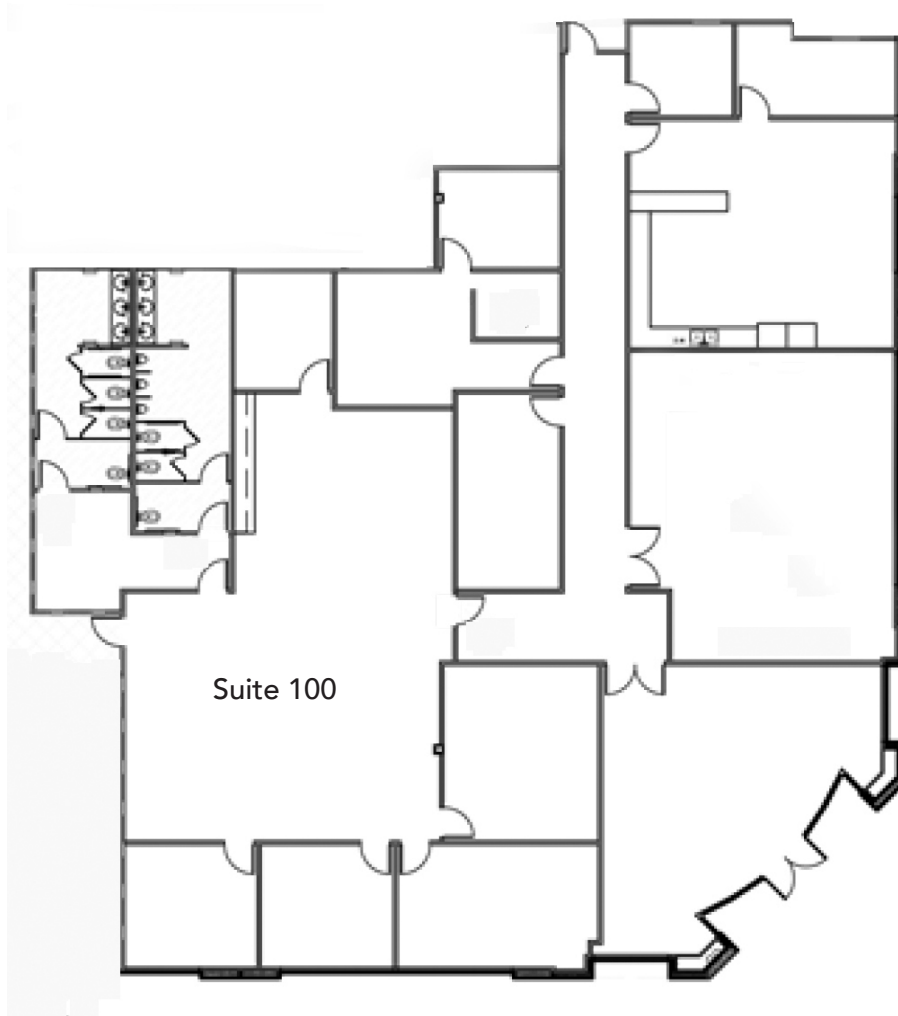
Mason Wilson, Associate, 951.276.3603, [mwilson@lee-associates.com](mailto:mwilson@lee-associates.com), DRE 02163918

Joseph Pierik, Vice President, 951.276.3685, [jpierik@lee-associates.com](mailto:jpierik@lee-associates.com), DRE 02144961

Andrew Peake, Senior Vice President/Managing Partner, 951.276.3644, [aquake@lee-associates.com](mailto:aquake@lee-associates.com), DRE 01398894

All information furnished regarding property for sale, rental or financing is from sources deemed reliable, but no warranty or representation is made to the accuracy thereof and same is subject to errors, omissions, change of price, rental or other conditions prior to sale, lease or financing or withdrawal without notice. No liability of any kind is to be imposed on the broker herein. Corporate DRE 01048055

# 9616 FLOOR PLAN

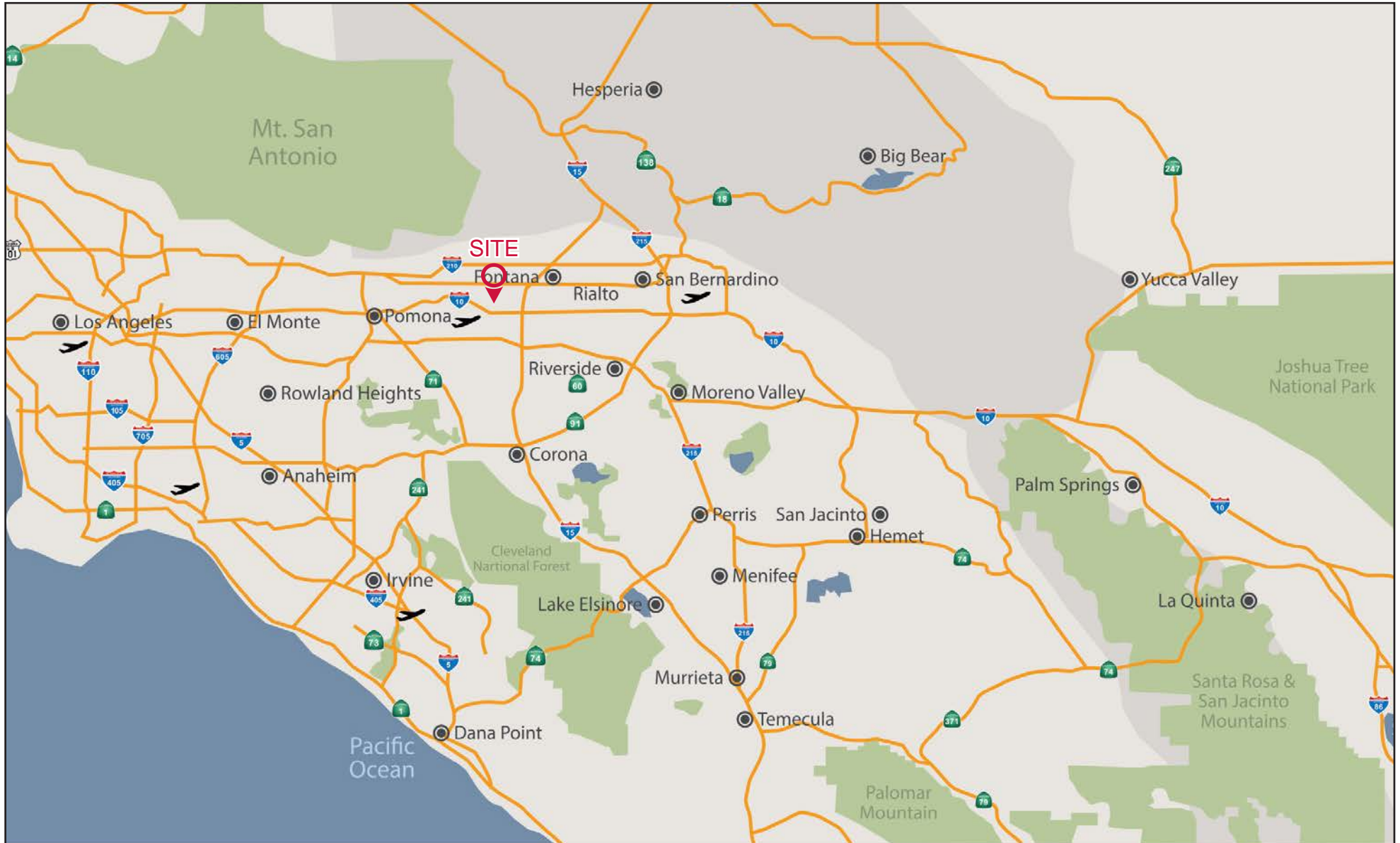


Mason Wilson, Associate, 951.276.3603, [mwilson@lee-associates.com](mailto:mwilson@lee-associates.com), DRE 02163918

Joseph Pierik, Vice President, 951.276.3685, [jpierik@lee-associates.com](mailto:jpierik@lee-associates.com), DRE 02144961

Andrew Peake, Senior Vice President/Managing Partner, 951.276.3644, [apeak@lee-associates.com](mailto:apeak@lee-associates.com), DRE 01398894

All information furnished regarding property for sale, rental or financing is from sources deemed reliable, but no warranty or representation is made to the accuracy thereof and same is subject to errors, omissions, change of price, rental or other conditions prior to sale, lease or financing or withdrawal without notice. No liability of any kind is to be imposed on the broker herein. Corporate DRE 01048055



Andrew Peake, Senior Vice President/Managing Partner, 951.276.3644, [apeake@lee-associates.com](mailto:apeake@lee-associates.com), DRE 01398894

All information furnished regarding property for sale, rental or financing is from sources deemed reliable, but no warranty or representation is made to the accuracy thereof and same is subject to errors, omissions, change of price, rental or other conditions prior to sale, lease or financing or withdrawal without notice. No liability of any kind is to be imposed on the broker herein. Corporate DRE 01048055





Mason Wilson, Associate, 951.276.3603, [mwilson@lee-associates.com](mailto:mwilson@lee-associates.com), DRE 02163918

Joseph Pierik, Vice President, 951.276.3685, [jpierik@lee-associates.com](mailto:jpierik@lee-associates.com), DRE 02144961

Andrew Peake, Senior Vice President/Managing Partner, 951.276.3644, [apeak@lee-associates.com](mailto:apeak@lee-associates.com), DRE 01398894