



**EQT | EXETER**



## 15720, 15730, & 15740 Park Row Drive

Houston, TX

21,384 SF of Industrial Flex Space Available for Lease

**VISIT** [EQTEXETER.COM](http://EQTEXETER.COM)

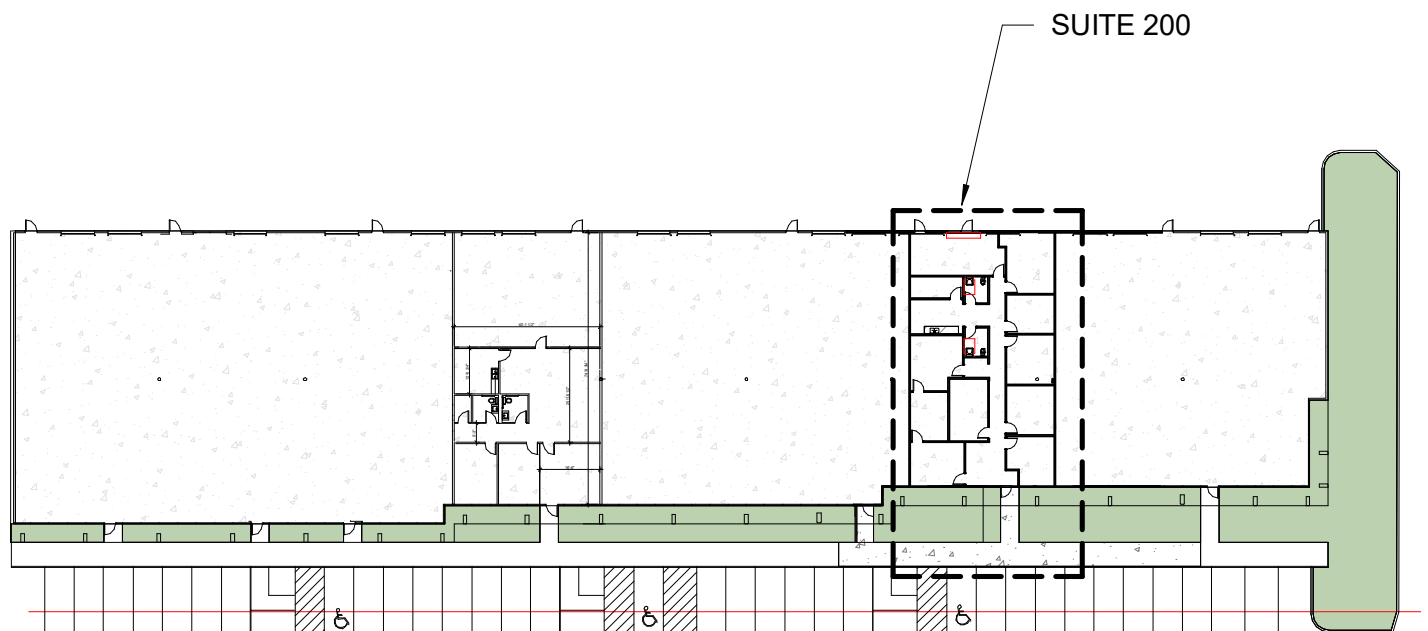
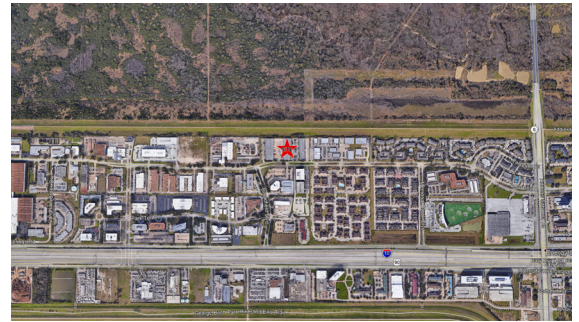
# 15720 Park Row Drive - Suite 200

Houston, TX

Building Size: 28,800 SF | Building Availability: 3,000 SF

## Building Specifications

- 28,800 SF Total Building Size
- 3,000 SF Available
- Class "A" Industrial Flex Space
- Approximately 2,683 SF of Office Space
- Approximately 317 SF of Warehouse Space
- (1) 9x10 OH door
- 18' Clear Height

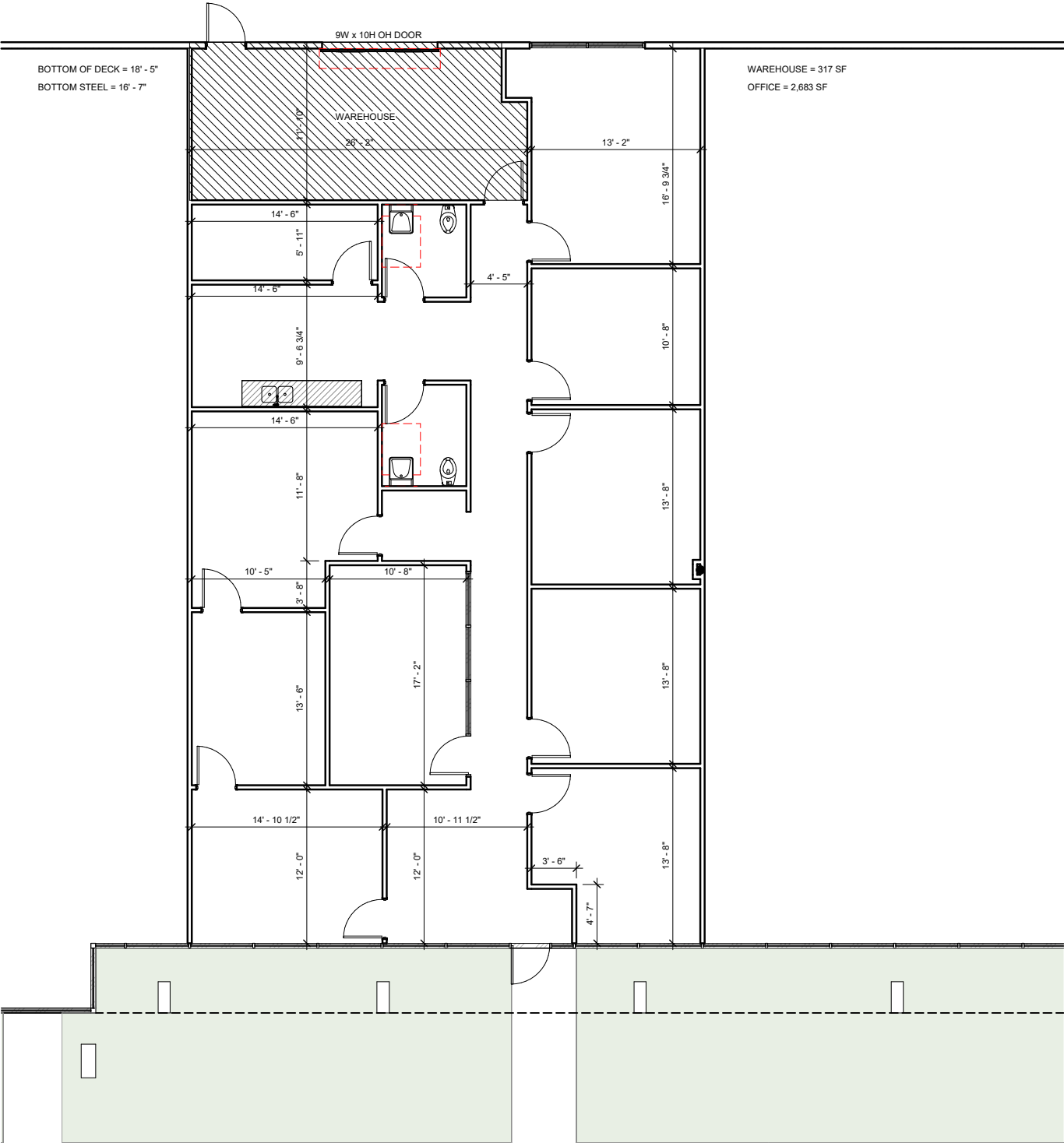


# 15720 Park Row Drive - Suite 200

Houston, TX

Building Size: 28,800 SF | Building Availability: 3,000 SF

## Suite 200 Floor Plan





# 15730 Park Row Drive

Houston, TX

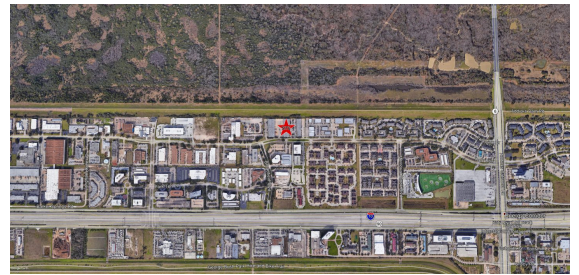
Building Size: 41,400 SF | Building Availability: 14,384 SF

## Building Specifications

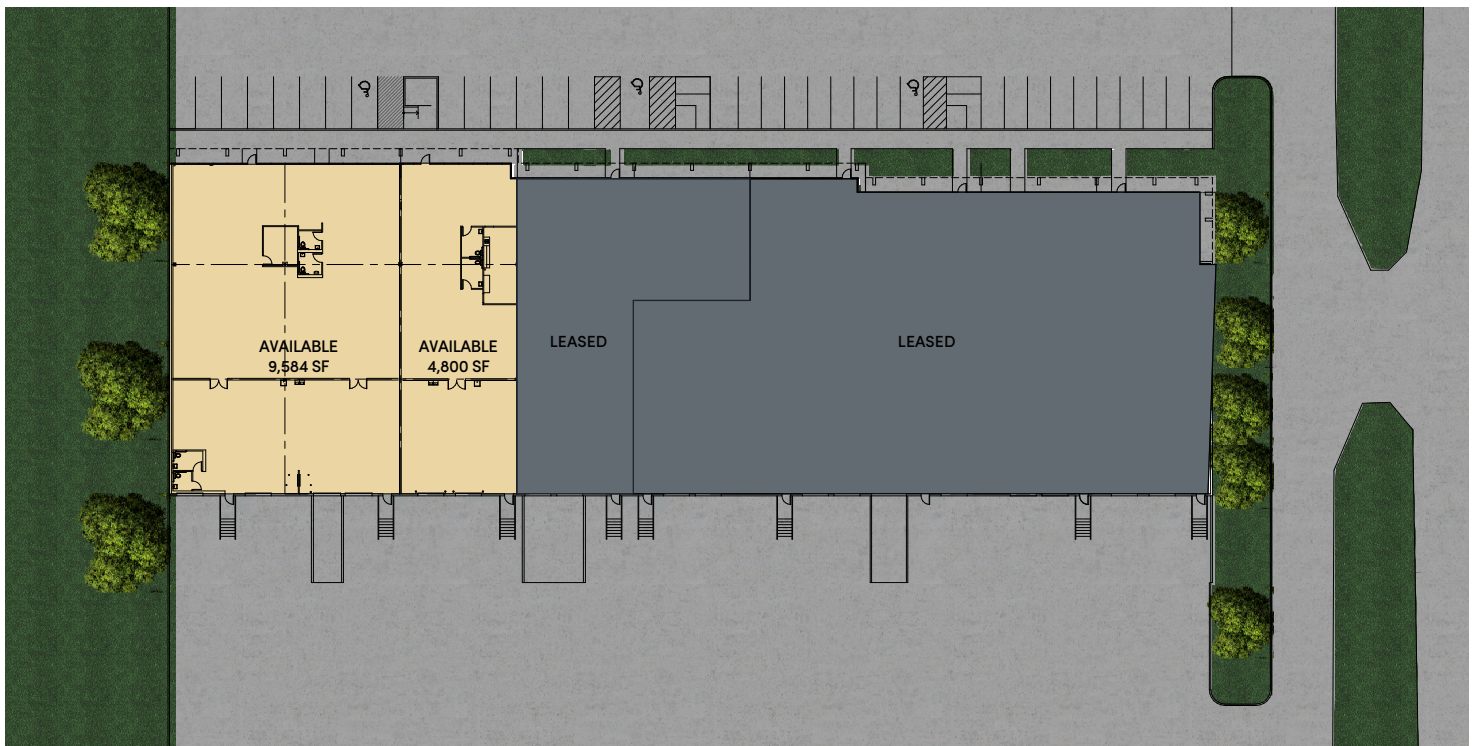
- Industrial space available
- 41,400 SF total building size
- 14,384 SF available size
- Attractive class "A" flex project
- Newly renovated units
- 20' clear height
- Dock high loading
- Located in Park Ten Business Park, a preferred location in West Houston, with immediate access to Hwy 6 and I-10

## Additional Information

- **Suite 400: 4,800 SF available**
  - Office SF: 3,200
  - Warehouse SF: 1600
  - 2 dock high doors
- **Suite 500: 9,584 SF available**
  - Shell condition
  - Office SF: 6,384
  - Warehouse SF: 3,220
  - 2 dock doors
  - 1 drive-in door



## 15730 Park Row Drive



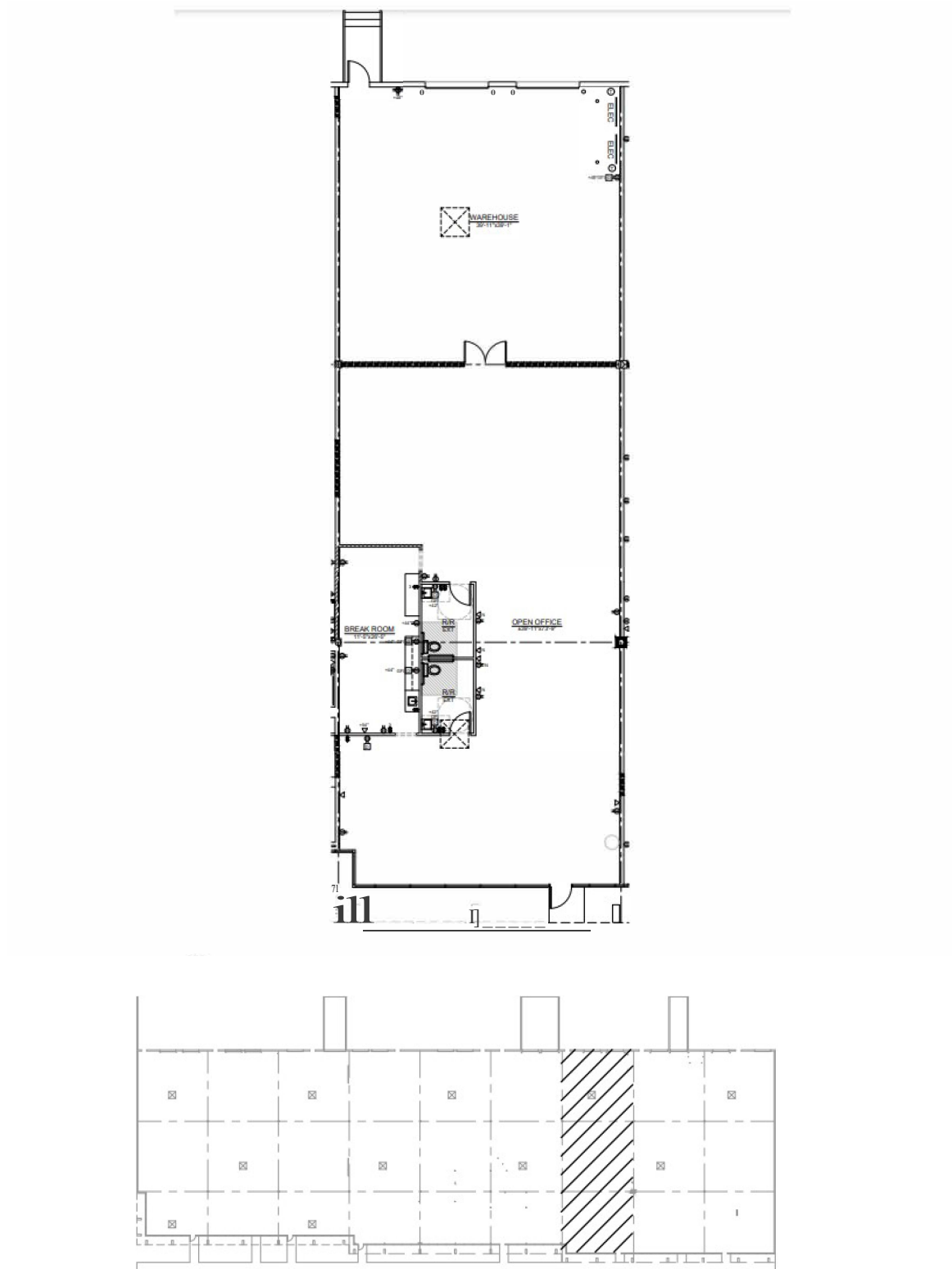


# 15730 Park Row Drive - Suite 400

Houston, TX

Building Size: 41,400 SF | Building Availability: 4,800 SF

## Suite 400 Floor Plan

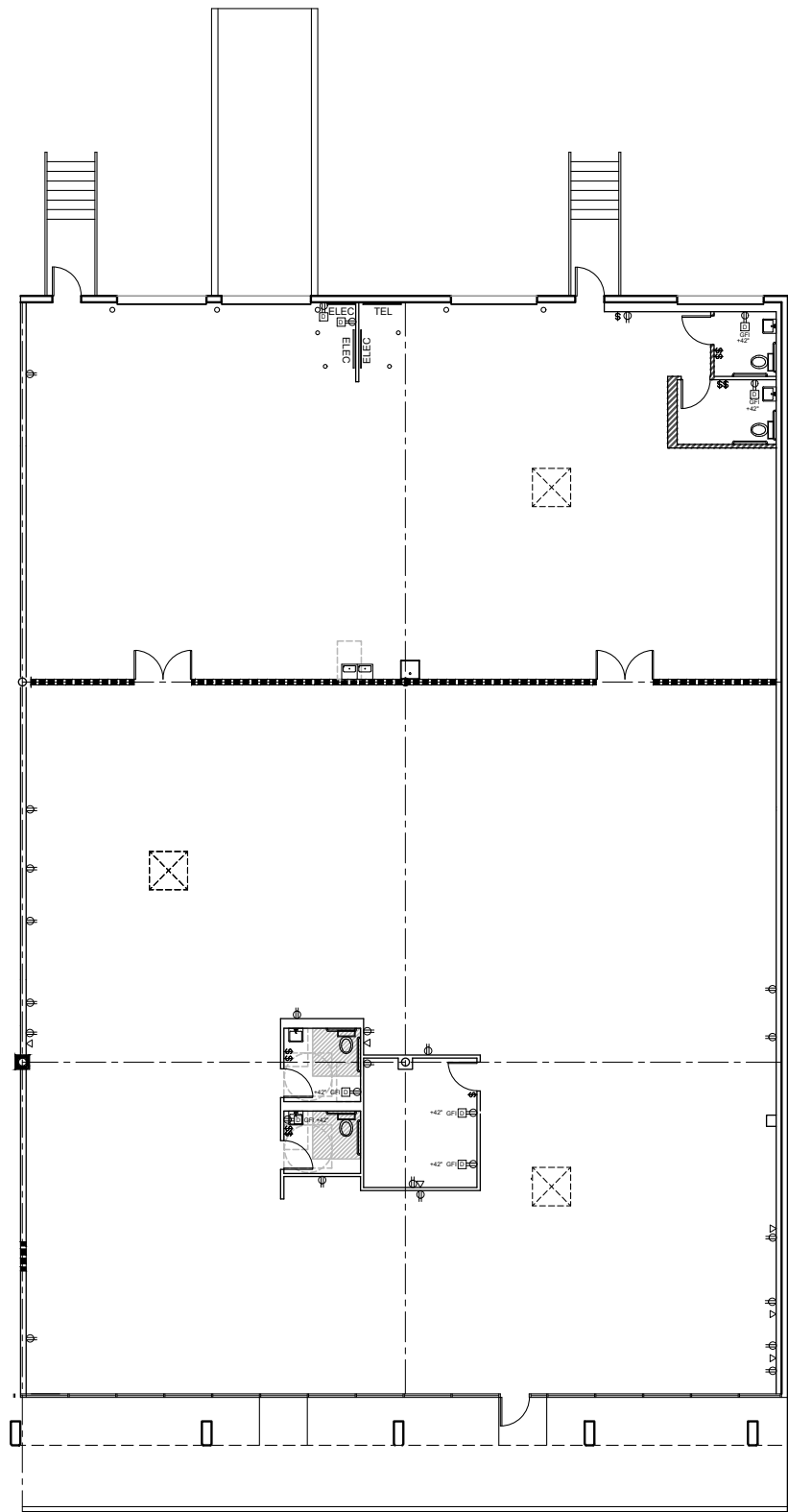


# 15730 Park Row Drive - Suite 500

Houston, TX

Building Size: 41,400 SF | Building Availability: 9,584 SF

## Suite 500 Floor Plan





EQT | EXETER



# 15740 Park Row Drive

Houston, TX

Building Size: 45,000 SF | 8,800 SF of Industrial Space Available

VISIT [EQTEXETER.COM](http://EQTEXETER.COM)



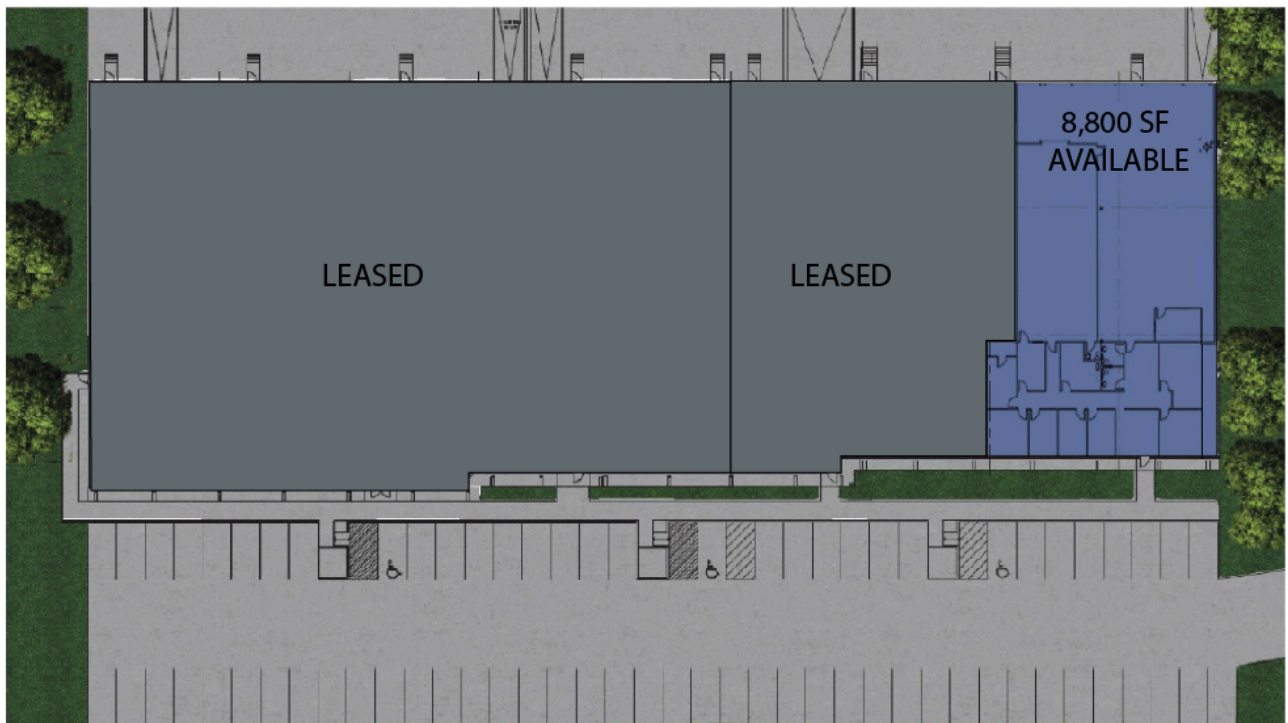
# 15740 Park Row Drive

Houston, TX

Building Size: 45,000 SF | Building Availability: 8,800 SF

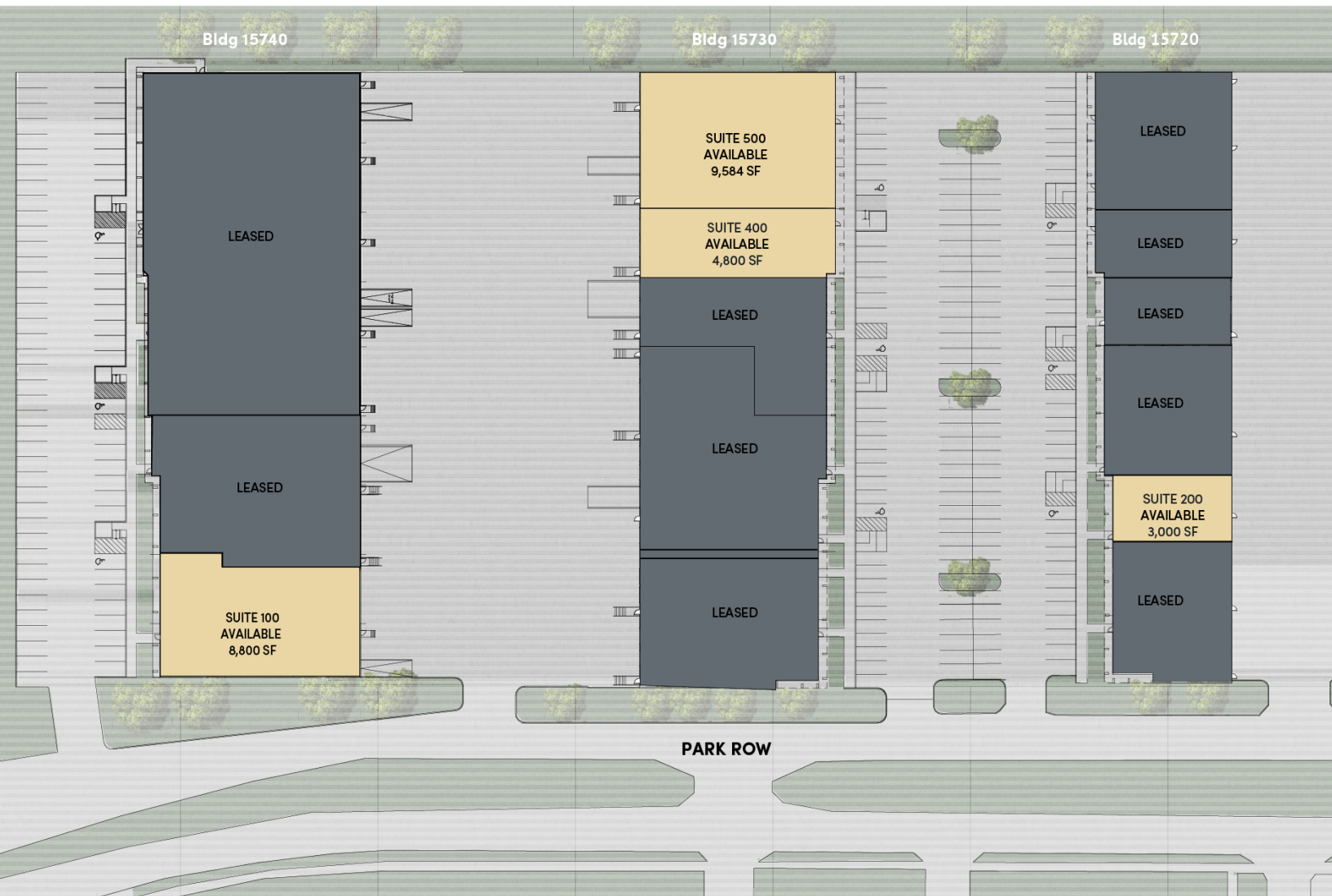
## Building Specifications

- Industrial space available
- 45,000 SF total building size
- Suite 100: 8,800 SF available
  - 3,543 SF of office space
  - 5,257 SF of warehouse space
  - 3 dock high doors/ 1 drive-in
  - Existing Power: 200 amps
- Attractive class "A" flex project
- Newly renovated units
- 20' clear height
- Wet Sprinkler System
- 18 Dock Doors: 12 Dock Highs / 6 Drive Ins
- Excellent access from Highway 6 and I-10
- Located in Park Ten Business Park which is a preferred location in West Houston





EQT | EXETER



## 15720, 15730, & 15740 Park Row Drive

Houston, TX

21,384 SF of Space Available

VISIT [EQTEXETER.COM](http://EQTEXETER.COM)