



1050 Post and Paddock
Grand Prairie, Texas 75050



Building Highlights

- 7,200 SF Available
- Suites Available:
 - Suite 100: 1,716 SF
 - Suite 101: 1,092 SF
 - Suite 103: 2,267 SF
 - Suite 200: 1,827 SF
 - Suite 204: 2,125 SF
- 1/2 acre of outside gated storage
- Owner/ Leasing management on site

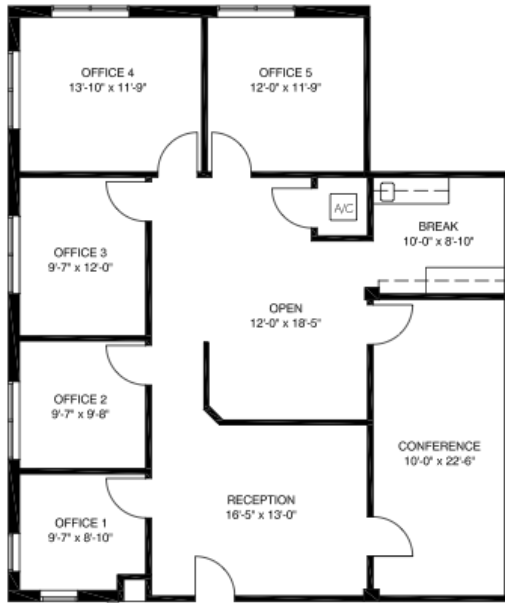
Location Highlights

Centrally located with exit and entrance ramps off Hwy 360.

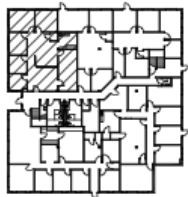
Will Dillard
PRINCIPAL

1050 Post and Paddock
Suite 203
Grand Prairie, TX 75050
214.686.5359
wdillard@wellscre.com

SUITE 100
1,716 RSF

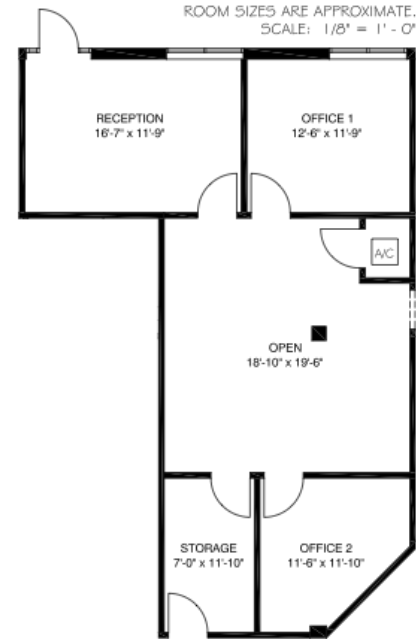


ROOM SIZES ARE APPROXIMATE.
SCALE: 1/8" = 1' - 0"

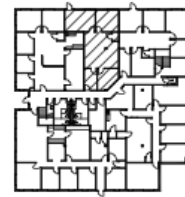


KEY PLAN
1ST FLOOR

SUITE 101
1,092 RSF

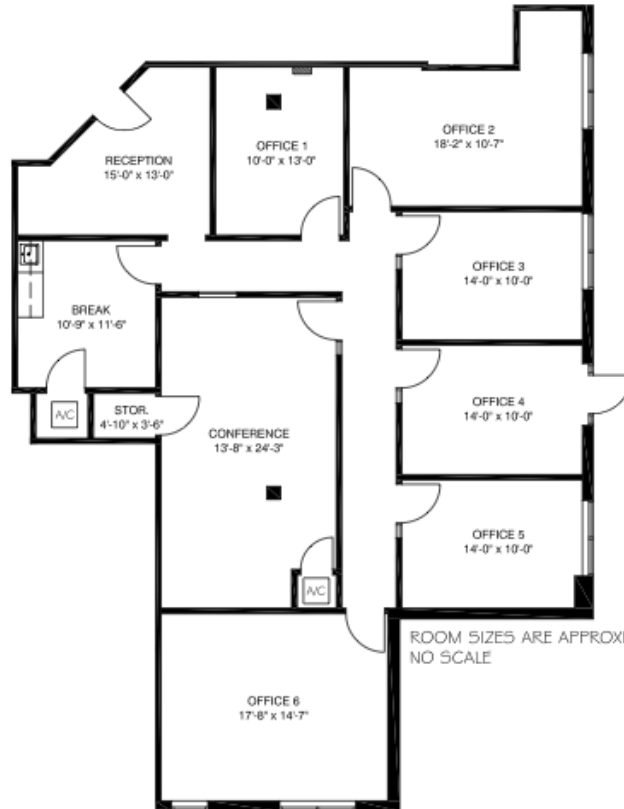


ROOM SIZES ARE APPROXIMATE.
SCALE: 1/8" = 1' - 0"

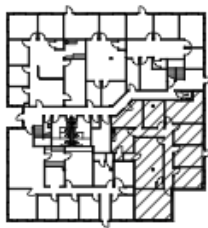


KEY PLAN
1ST FLOOR

SUITE 103
2,267 RSF

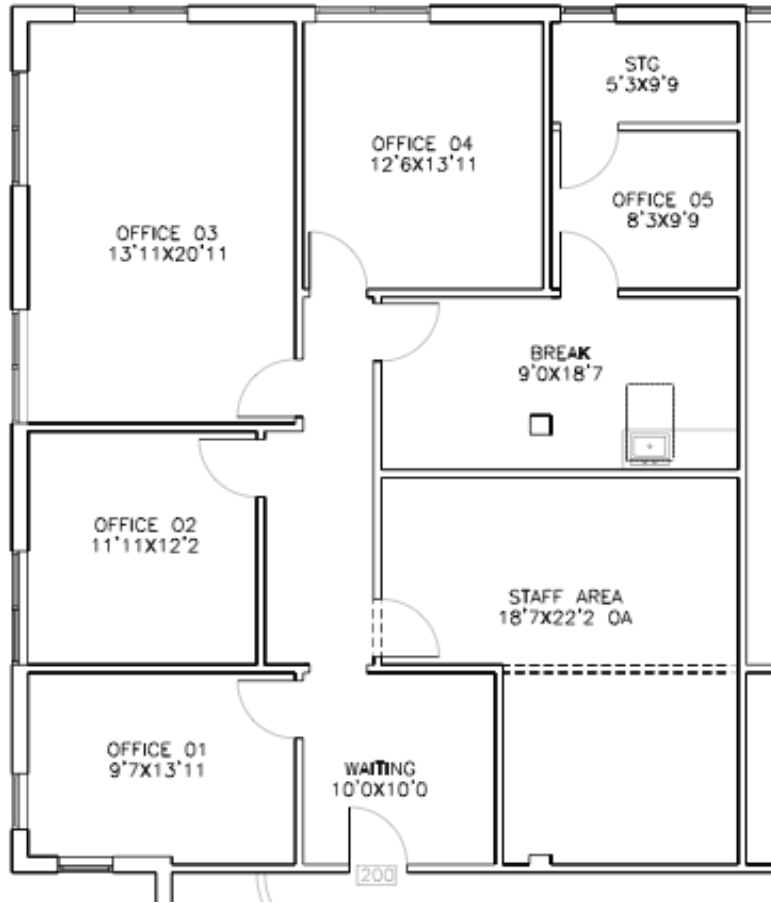


ROOM SIZES ARE APPROXIM
NO SCALE

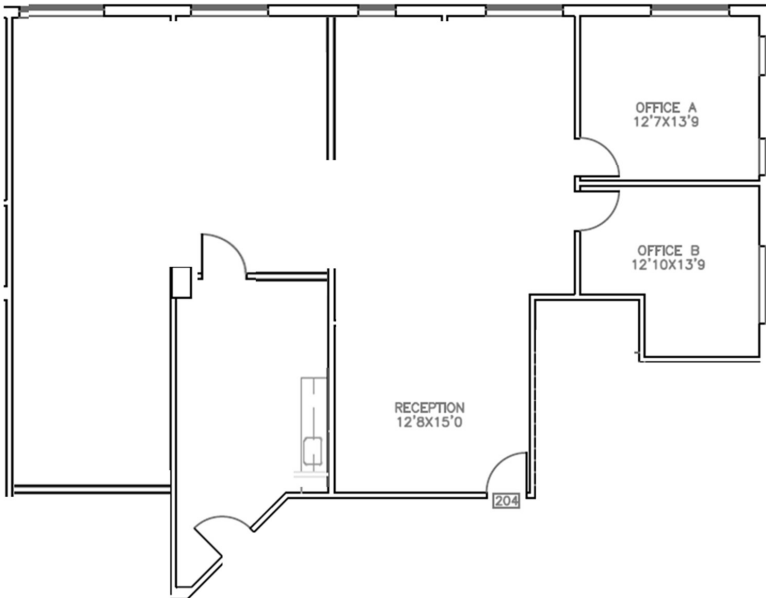


KEY PLAN
1ST FLOOR

SUITE 200- 1,827 rsf



SUITE 204 – 2,125rsf



FOR LEASE | 7,200 SF OFFICE SPACE



The information provided herein was obtained from sources believed reliable; however, Wells CRE makes no guarantees, warranties, or representations as to the completeness or accuracy thereof. The presentation of this property is submitted subject to errors, omissions, change of price or conditions, prior sale or lease, or withdrawal without notice. Copyright © 2017 Wells CRE.