

# HERRIMAN DRIVE-THRU END CAP

FOR SUBLEASE

SITE



## PROPERTY DETAILS

3492 WEST MARADONA DRIVE, UNIT #1  
HERRIMAN, UT 84096

- Drive-thru end-cap
- 1,600 SF
- New store – 2023 build
- Eight (8) years remaining on term with two 10-year options
- FF&E available but not included
- \$37/SF
- \$6 NNN
- 8% rent escalation every five years

## SURROUNDING TENANTS



## 2024 DEMOS

### EST. POPULATION

1 MILE » 4,057  
3 MILE » 50,911  
5 MILE » 150,085

### EST. HOUSEHOLDS

1 MILE » 1,213  
3 MILE » 14,623  
5 MILE » 43,753

### EST. AVERAGE HH INCOME

1 MILE » \$153,819  
3 MILE » \$157,093  
5 MILE » \$155,119



**MOUNTAIN WEST**  
COMMERCIAL REAL ESTATE

**PRESTON MILLER, MRED**

pmiller@mwcre.com  
direct 801.783.5492  
[View Profile](#)

**SPENCER GREER, MRED**

sgreer@mwcre.com  
direct 801.783.3078  
[View Profile](#)

**FULL SERVICE  
COMMERCIAL REAL ESTATE**  
312 East South Temple  
Salt Lake City, UT 84111  
Office 801.456.8800  
[www.mwcre.com](http://www.mwcre.com)



SITE



MW

**MOUNTAIN WEST**  
COMMERCIAL REAL ESTATE

**PRESTON MILLER, MRED**

[pmiller@mwcre.com](mailto:pmiller@mwcre.com)

direct 801.783.5492

[View Profile](#)

**SPENCER GREER, MRED**

[sgreer@mwcre.com](mailto:sgreer@mwcre.com)

direct 801.783.3078

[View Profile](#)



**FULL SERVICE  
COMMERCIAL REAL ESTATE**

312 East South Temple

Salt Lake City, UT 84111

Office 801.456.8800

[www.mwcre.com](http://www.mwcre.com)





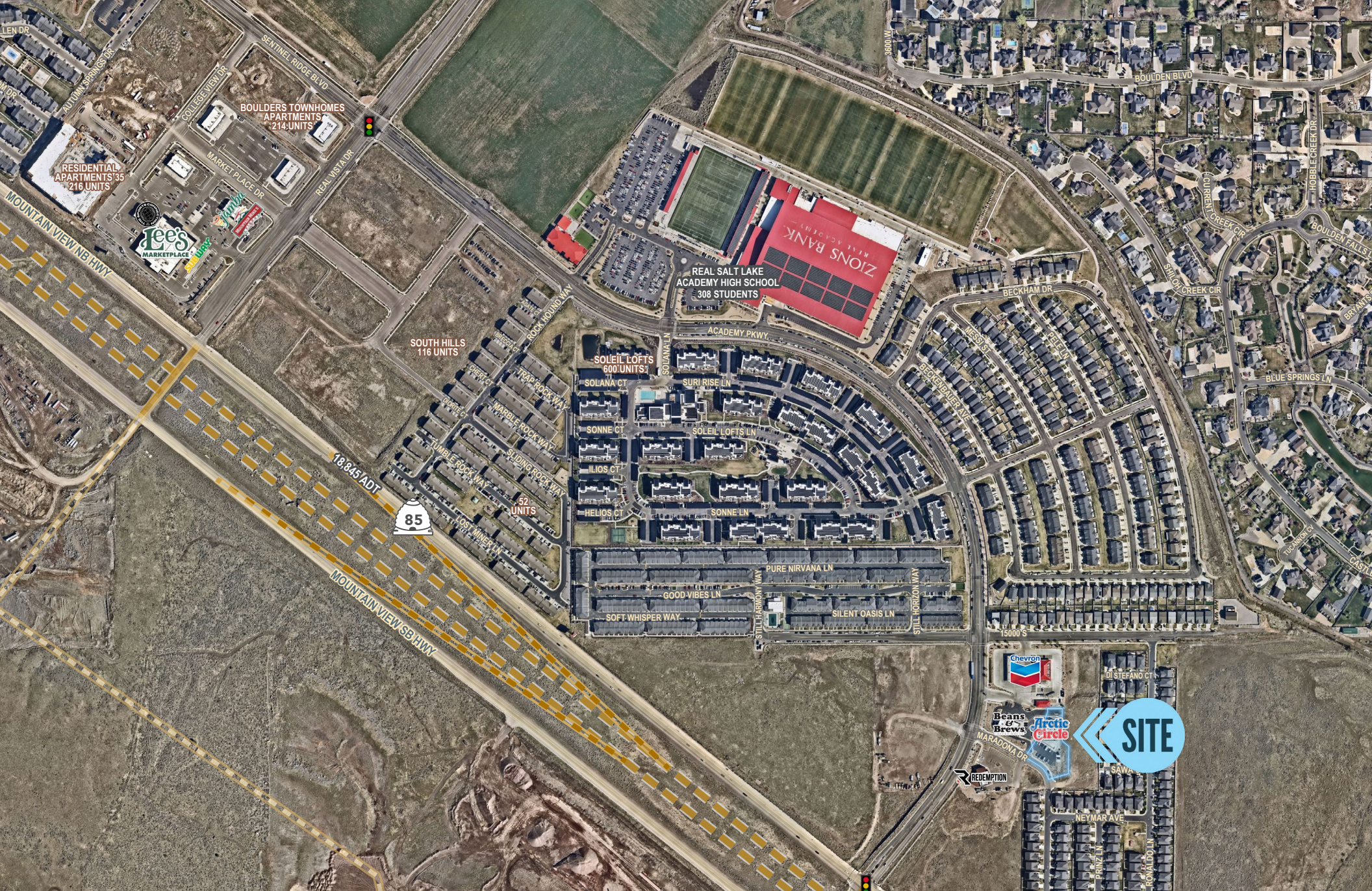
**MOUNTAIN WEST**  
COMMERCIAL REAL ESTATE

**PRESTON MILLER, MRED**  
pmiller@mwcre.com  
direct 801.783.5492  
[View Profile](#)

**SPENCER GREER, MRED**  
sgreer@mwcre.com  
direct 801.783.3078  
[View Profile](#)

**FULL SERVICE  
COMMERCIAL REAL ESTATE**  
312 East South Temple  
Salt Lake City, UT 84111  
Office 801.456.8800  
[www.mwcre.com](http://www.mwcre.com)





**MOUNTAIN WEST**  
COMMERCIAL REAL ESTATE

**PRESTON MILLER, MRED**  
pmiller@mwcre.com  
direct 801.783.5492  
[View Profile](#)

**SPENCER GREER, MRED**  
sgreer@mwcre.com  
direct 801.783.3078  
[View Profile](#)

**FULL SERVICE  
COMMERCIAL REAL ESTATE**  
312 East South Temple  
Salt Lake City, UT 84111  
Office 801.456.8800  
[www.mwcre.com](http://www.mwcre.com)