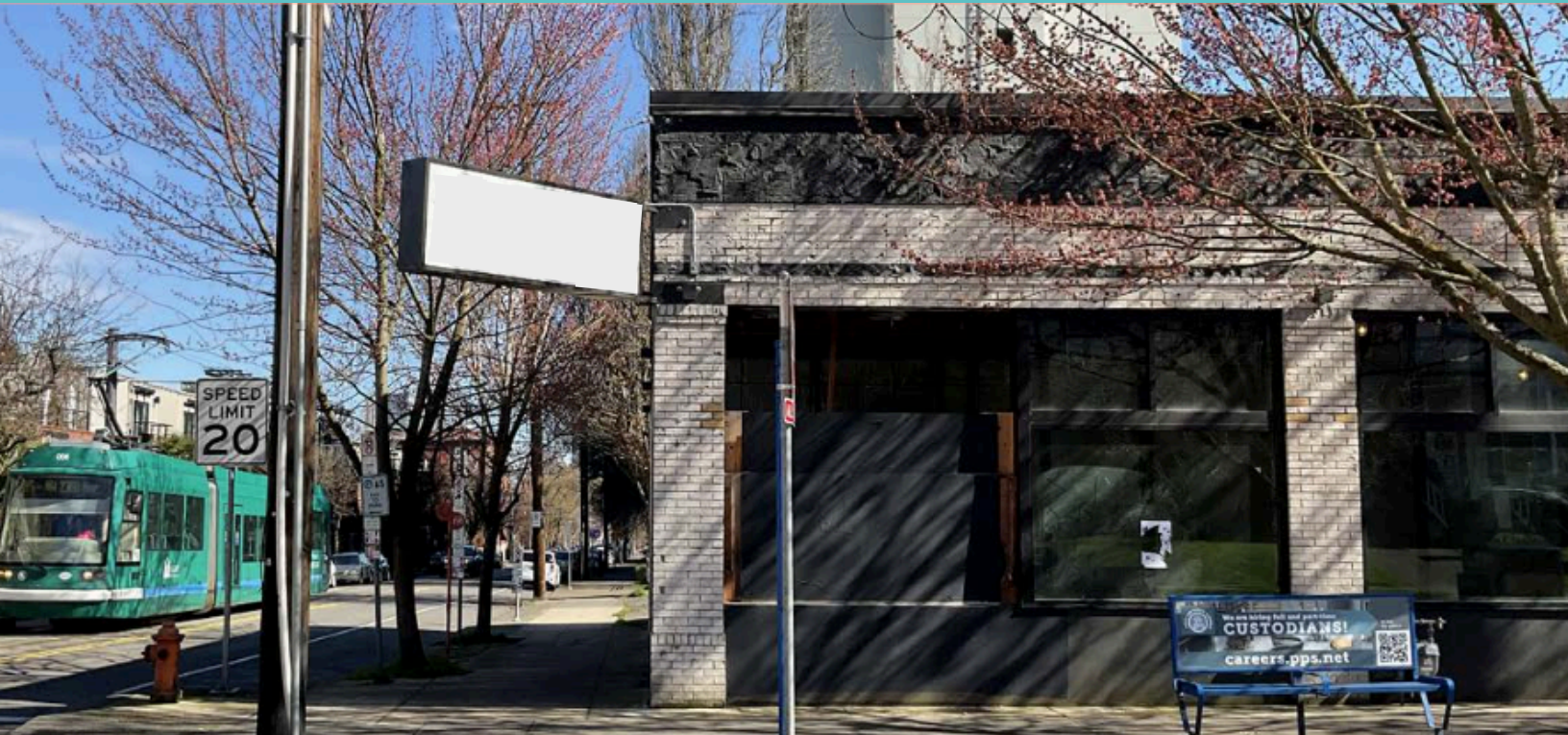


# FOR LEASE



## 1120 NW 21st Ave.

Retail | 2,913 SF | \$26.50/SF

Corner Unit of 6,500 SF Single-Level Building



Debbie Thomas | Listing Broker | Office: 503.226.2141 | Direct: 503.720.6335 | [deb@debbiethomas.com](mailto:deb@debbiethomas.com)

YOUR URBAN REAL ESTATE RESOURCE



# THE BUILDING



## Highlights:

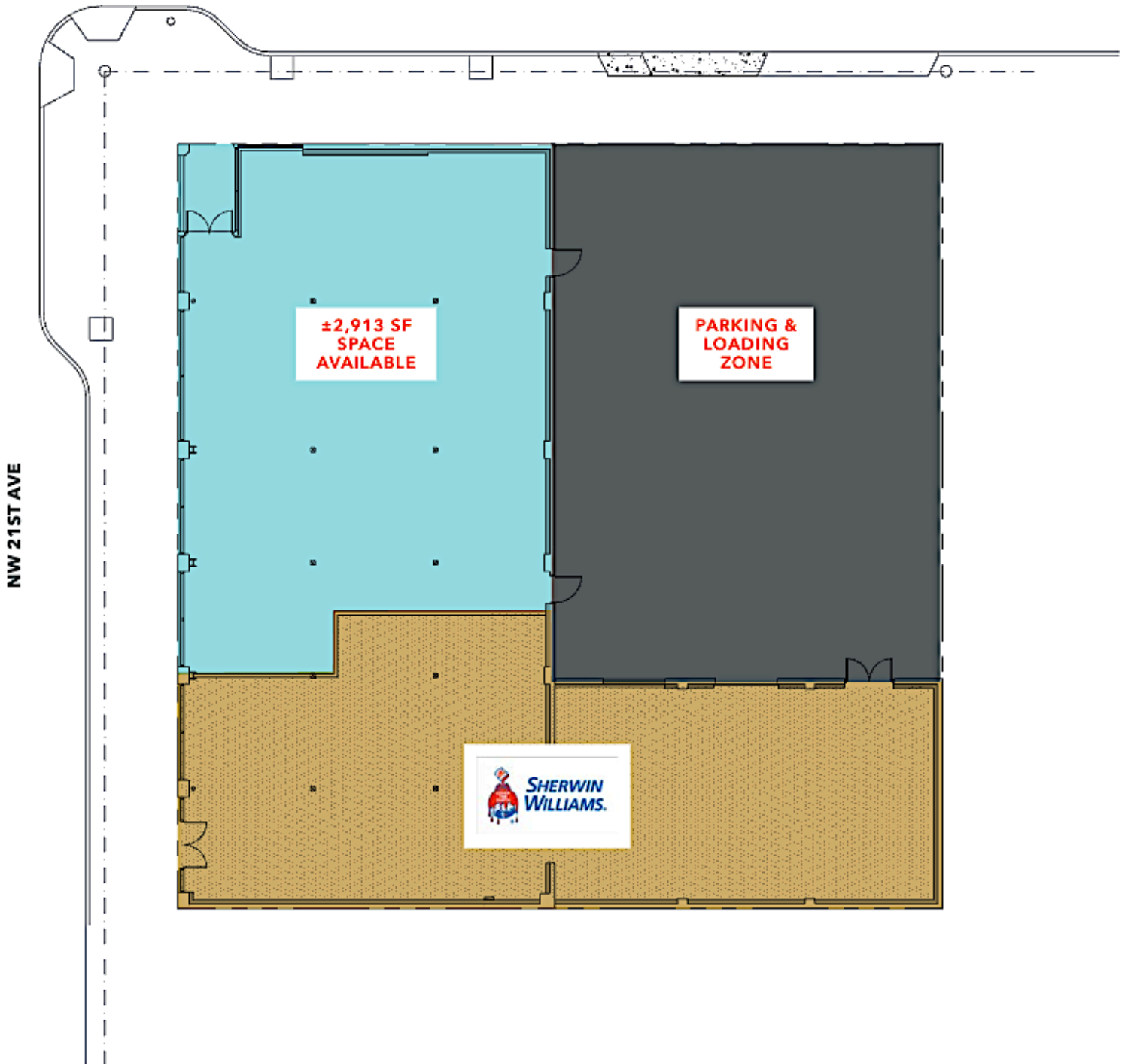
Built in 1924 and renovated in 2020-2021, this warm-shell corner unit features huge storefront windows, exposed ceilings, and natural light provided by multiple skylights. The expansive glass line and street frontage on bustling NW 21st Ave. are guaranteed to give your business tons of exposure!

Situated along the Streetcar line at the prominent intersection of NW 21st and Northrup, this space is conveniently close to I-405, thousands of dwellings (apartments/condos/homes), as well as restaurants, entertainment, and shopping. The attached parking lot shared with strong co-tenant Sherwin Williams is an added bonus!

- Busy Corner Unit on NW 21st Ave.
- High Foot & Commuter Traffic
- Street Frontage
- Expansive Glass Line
- Natural Lighting
- Strong Co-Tenant: Sherwin Williams
- Electrical, HVAC, & Seismic Upgrades
- Newly Renovated Windows
- Vestibule Entryway
- Shared On-Site Parking
- Walk Score: 97 Bike Score: 97
- Zone: CM2 (Commercial Mixed-Use)

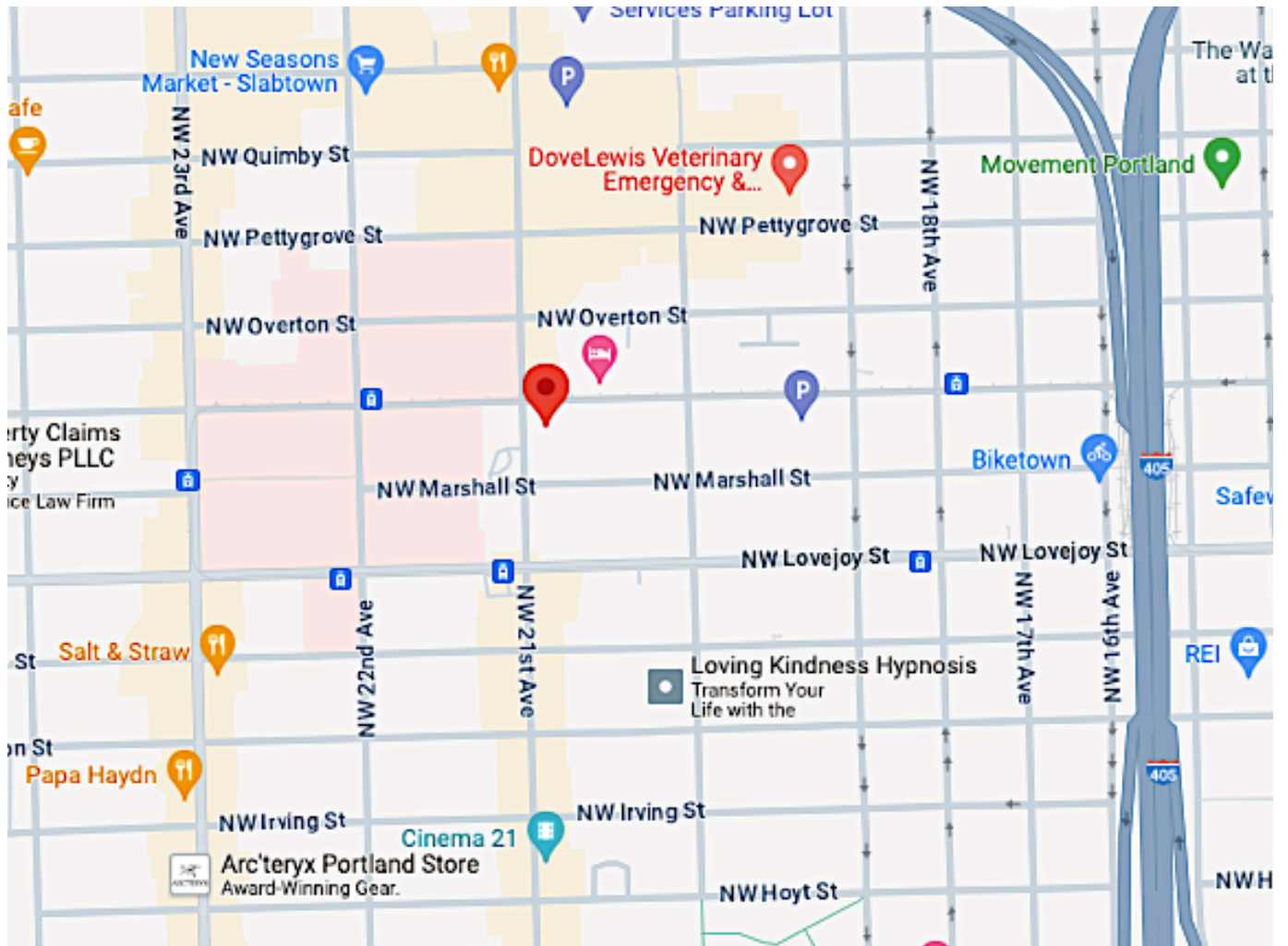
# THE SPACE

NW NORTHROP ST



\*Not actual site plan but representation

# THE NEIGHBORHOOD



## SHOP

Sherwin Williams  
New Seasons  
Pro Photo Supply  
Arc'teryx  
Fleet Feet  
Safeway  
Ace Hardware  
Lush Cosmetics  
Ferguson Bath, Kitchen & Lighting  
Trader Joes

## EAT

Marrakesh  
Sweet Bacon Cafe  
Bar West  
Anna Bananas Coffeehouse  
Besaws  
Cafe Nell  
Serratto  
Salt & Straw  
Papa Haydn  
Swagat  
Matador NW

## PLAY

Blade & Timber Axe Throwing  
PlayDate PDX  
Cinema 21  
Voicebox Karaoke  
Movement Portland  
ComedySportz  
Cycle Dog  
Chromacore  
Freakybuttrue Peculiarium Museum  
Couch Park  
Nob Hill

For additional details contact:

**DEBBIE THOMAS**

Office: 503.226.2141 | Direct: 503.720.6335

[deb@debbiethomas.com](mailto:deb@debbiethomas.com)

402 NW 13th Ave. | [www.debbiethomas.com](http://www.debbiethomas.com)