

2100 11th Avenue

Sacramento, CA 95818

FOR LEASE

"THE HEART OF LANDPARK"

MIKE BRODOVSKY

Lic. 01892483

916.955.1053

Mike@Brodovsky.com



Your name Here



2100 11th Avenue

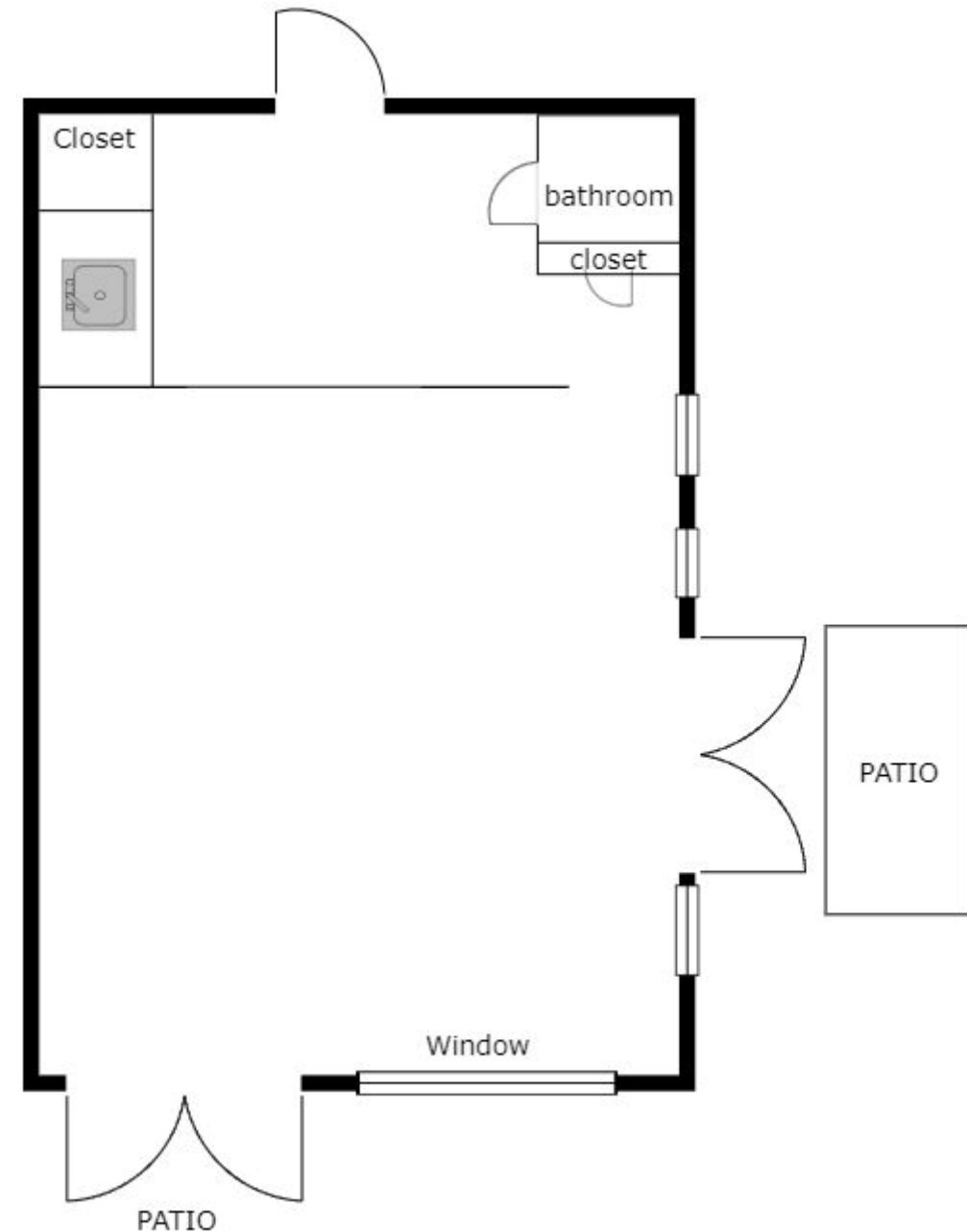
Sacramento, CA 95818

- Approx. 1,250 sf (18' x 68)
- End Cap Unit With Private & Shared Patio.
- Tenant improvement allowance.
- Current Tenants includes- Sandwich spot, CAFÉ, Hair Lounge
- Surrounded by strong traffic generators including Sacramento City College,- Hughes Stadium, Sacramento Zoo William Land Park.

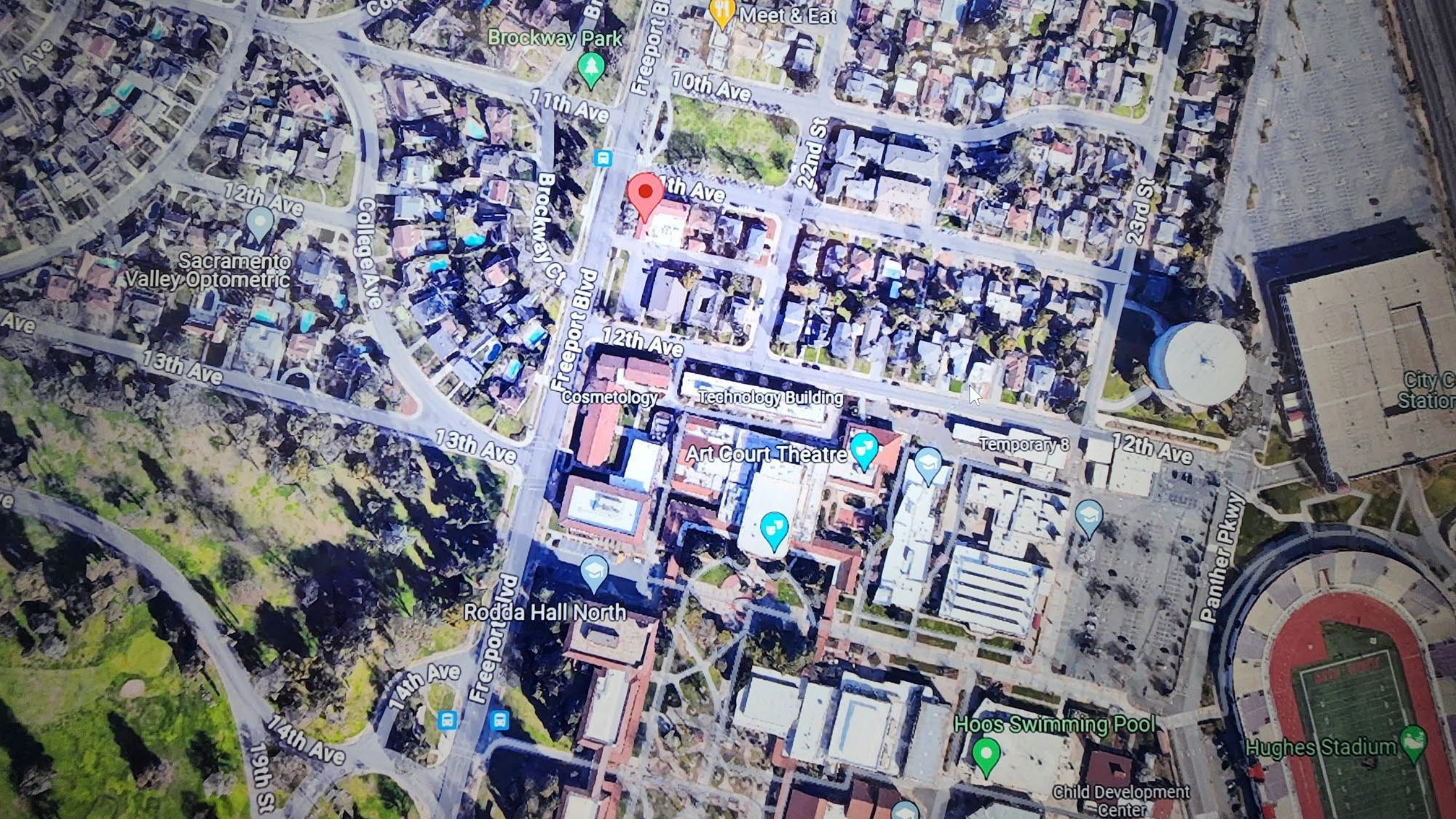
2023 Estimated Demographics (3-miles)

- Population- 153,384
- Avg HH Income- \$107,379
- Households 63,288
- Businesses 7,367
- Daytime Population 216,248

Mike Brodovsky 916.955.1053 Mike@Brodovsky.com







Brockway Park

Meet & Eat

10th Ave

11th Ave

Freeport Blvd

22nd St

11th Ave

23rd St

12th Ave

Sacramento Valley Optometric

College Ave

Brockway Ct

13th Ave

Freeport Blvd

12th Ave

Cosmetology

Technology Building

13th Ave

Art Court Theatre

Temporary 8

12th Ave

e

Rodda Hall North

14th Ave

Freeport Blvd

14th Ave

19th St

Panther Pkwy

Hoos Swimming Pool

Child Development Center

Hughes Stadium

City Center Station