



LINLO PROPERTIES

# The Colonial Professional Center

4800 Linglestown Road, Suite 201  
Harrisburg, PA 17112



## Property Overview

Rental Rate:	\$20.95/SF/YR	Lot Size:	4.96 AC
Property Type:	Office	Rentable Building Area:	39,331 SF
Lease Type:	Gross (excl. in-suite janitorial)	Year Built/Renovated:	1987/2020
TI Allowance:	Available	Security:	Secured Access
Façade Signage:	Available	Parking:	4.0/1,000 SF

### Major Roadway(s) Access:

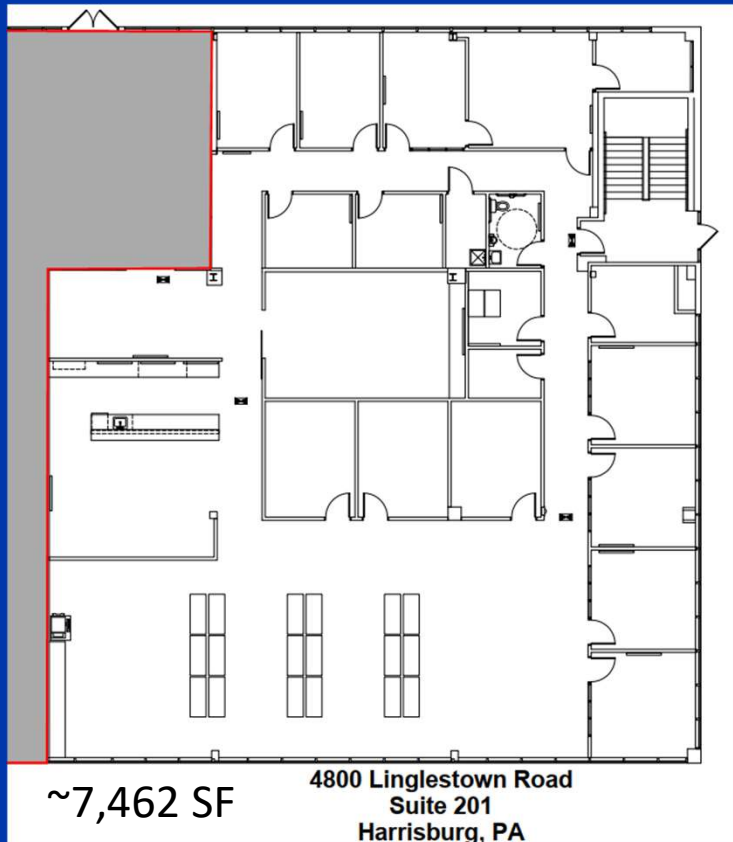
State Rt. 39, US Rts. 15 and 22, Interstates 81, 83, and 76 (PA Turnpike)

### Property Highlights:

Major renovations completed in 2020, excellent visibility from the main road, natural light, local ownership and property management, and conveniently located to major roadways.

# THANK YOU

Thank you for your interest in Linlo Properties and 4800 Linglestown Road. If you would like additional information on this property, please contact our leasing team or visit our website at [www.linloproperties.com](http://www.linloproperties.com).



## Leasing Team:

**Lowell R. Gates**

President

[lrgates@linloproperties.com](mailto:lrgates@linloproperties.com)

(717) 307-2002 Ext. 12

**Tracey J. Tressler**

Sr. Director of Real Estate

[ttressler@linloproperties.com](mailto:ttressler@linloproperties.com)

(717) 307-2002 Ext. 16



# LINLO PROPERTIES

150 Corporate Center Drive; Suite 100  
Camp Hill, PA 17011  
(717) 307-2002