

Three Fields, Limitless Possibilities.

CLU

ATHLETIC FIELDS



Unique opportunity to lease professional athletic training fields in a pristine college campus



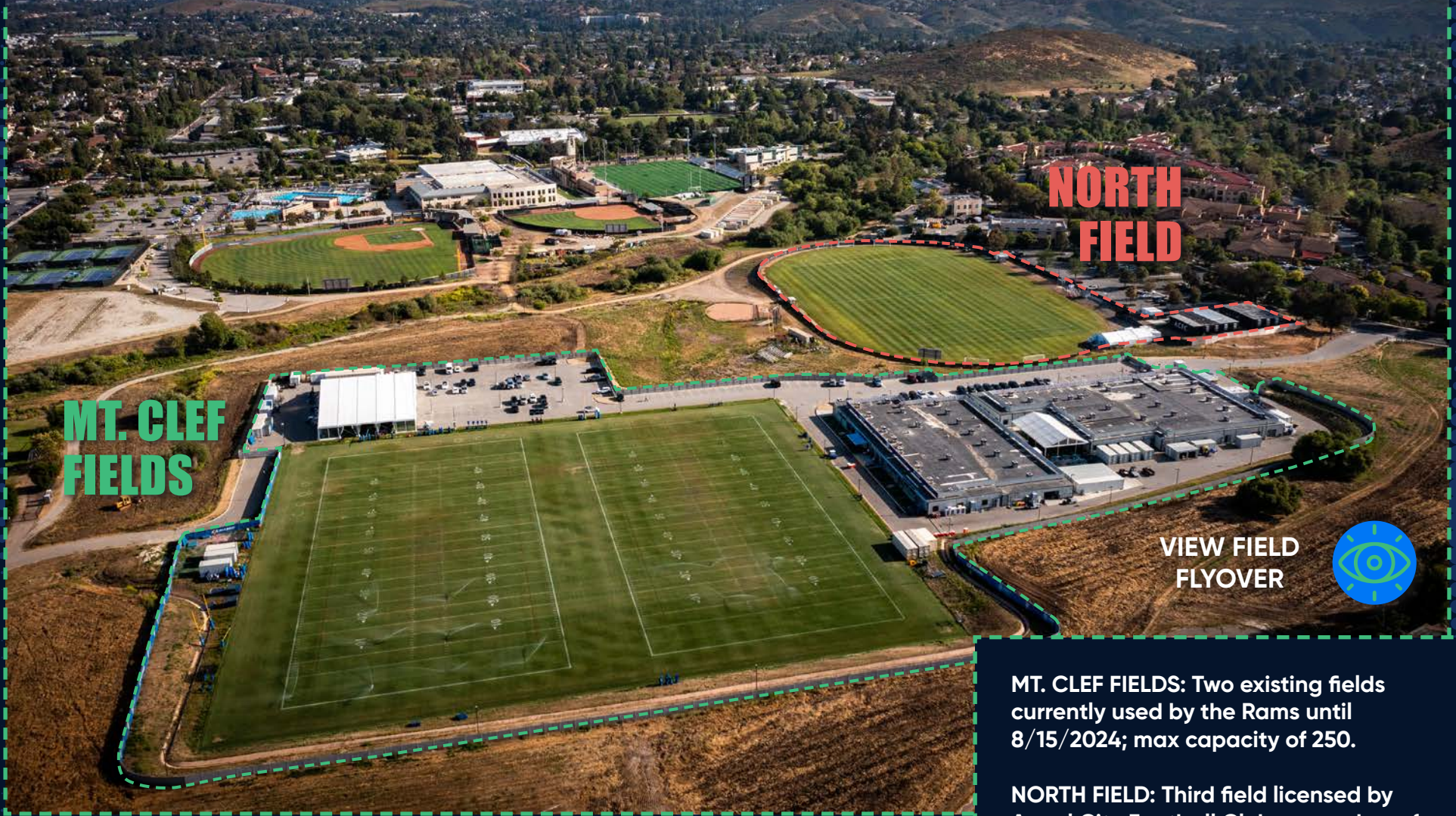
3680 Campus Dr.
Thousand Oaks, CA

CBRE California Lutheran University

[CLICK FOR
VIRTUAL TOUR](#)



INTRODUCING THE FIELDS



**MT. CLEF
FIELDS**

**NORTH
FIELD**

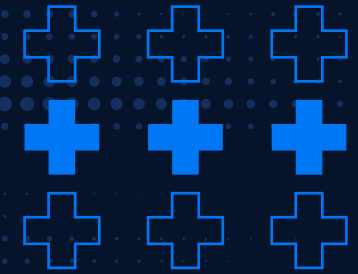
**VIEW FIELD
FLYOVER**



MT. CLEF FIELDS: Two existing fields currently used by the Rams until 8/15/2024; max capacity of 250.

NORTH FIELD: Third field licensed by Angel City Football Club, a member of the National Women's Soccer League.

THE HIGHLIGHTS



SECURED FACILITIES:

Private, fenced fields are not accessible to the public

AREA:

MT. CLEF FIELDS: 992 acres

#1 TBD

#2 TBD

NORTH FIELD: Not currently available - 4.88 acres

PARKING:

MT. CLEF FIELDS: 182 stalls with 18 in common stalls

NORTH FIELD: 50 in common stalls

ASKING RATE:

\$1M PER FIELD / YEAR

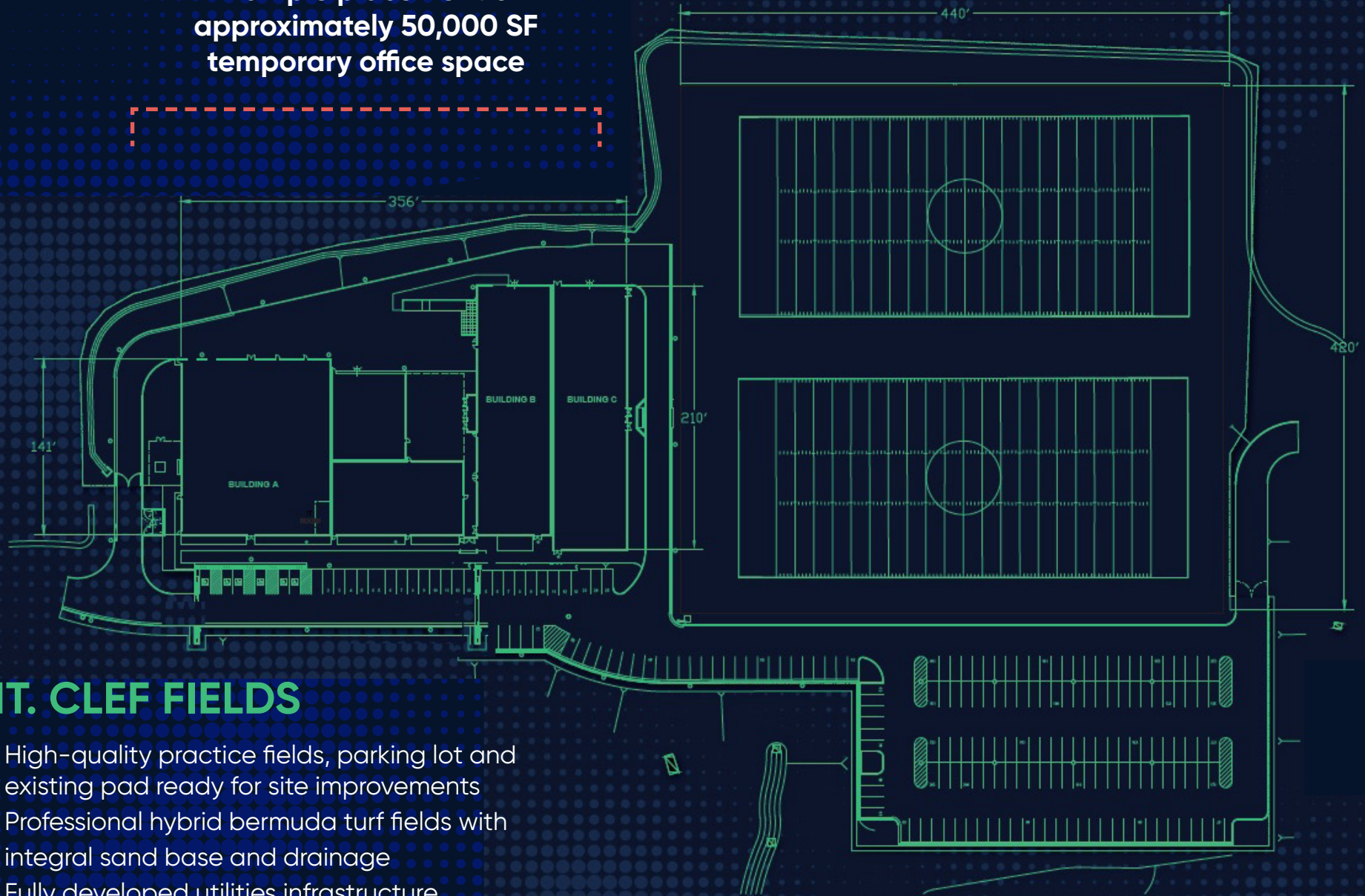
Occupant responsible for maintenance, utilities, security, and improvements.



MT. CLEF FIELDS



Example placement of
approximately 50,000 SF
temporary office space



FOOTBALL FIELD CONFIGURATION

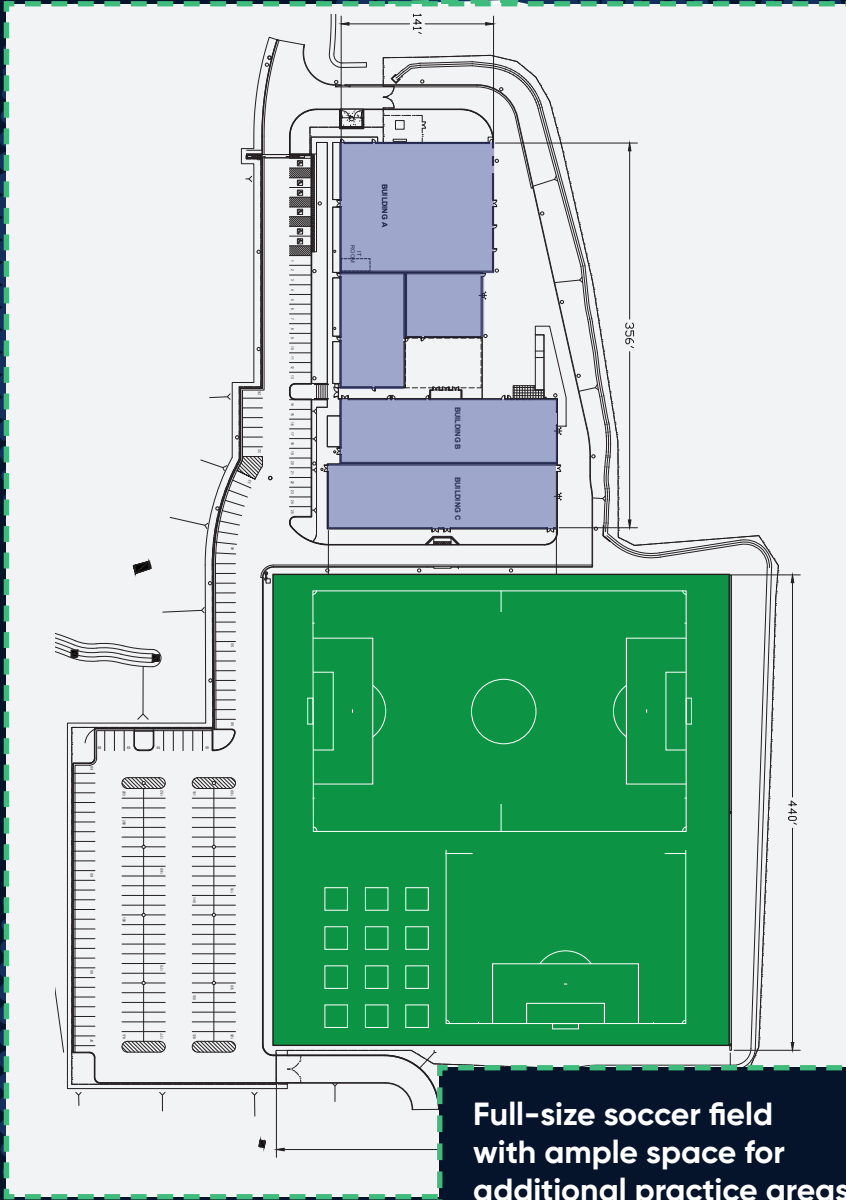
MT. CLEF FIELDS

- High-quality practice fields, parking lot and existing pad ready for site improvements
- Professional hybrid bermuda turf fields with integral sand base and drainage
- Fully developed utilities infrastructure

POTENTIAL LAYOUTS

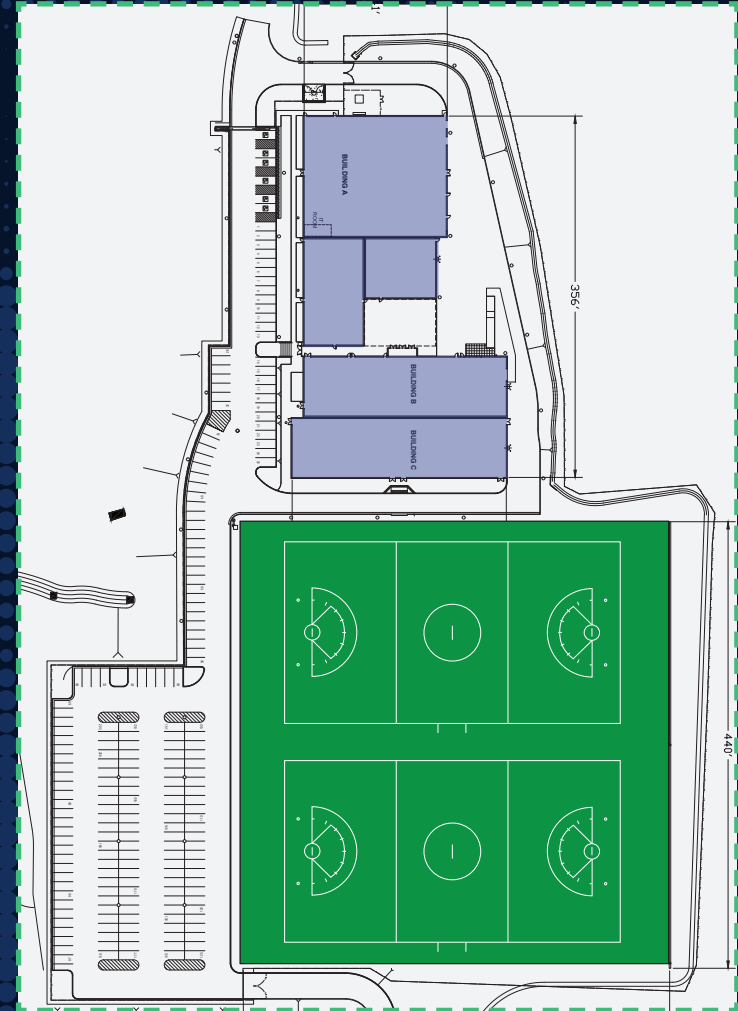


SOCCER FIELD CONFIGURATION



Full-size soccer field with ample space for additional practice areas

LACROSSE FIELD CONFIGURATION



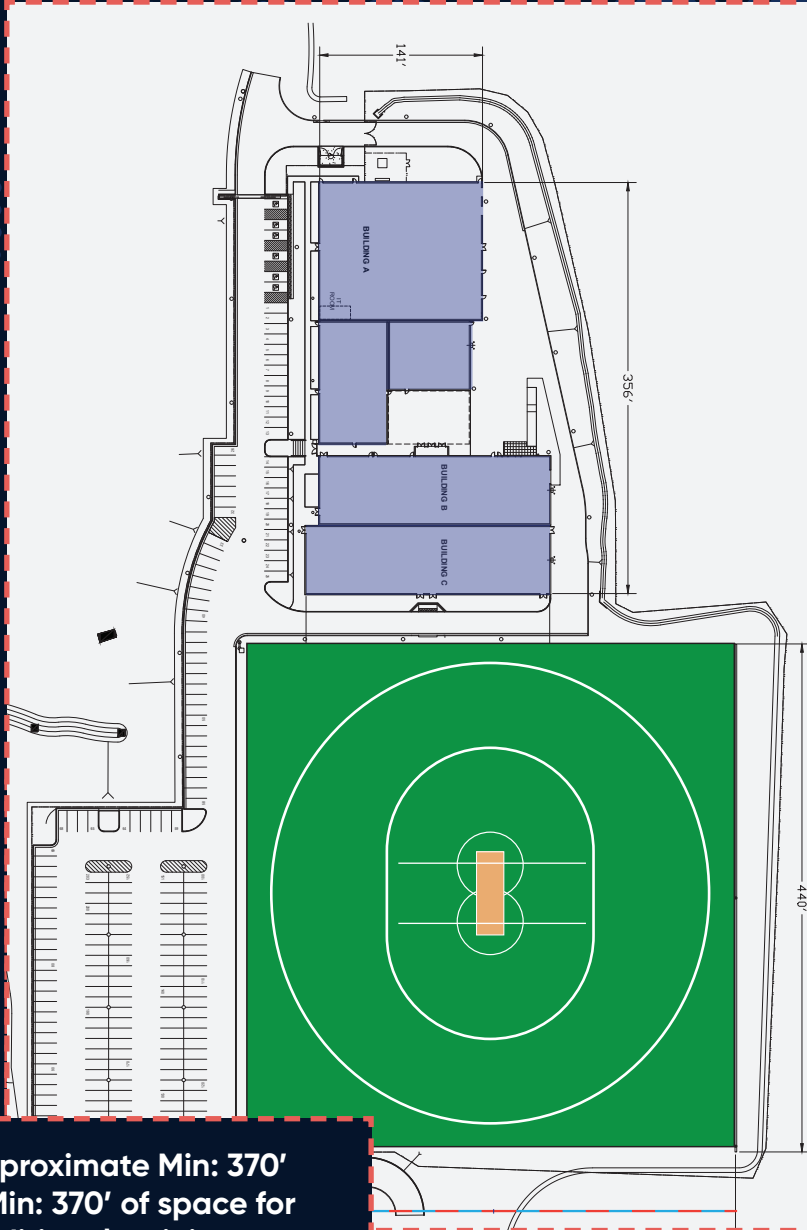
LACROSSE: ±60 Yards Wide x ±110 Yards Long (180'W x 330'L)

SOCCER: ±74 Yards Wide x ±115 Yards Long (222'W x 345'L)

POTENTIAL LAYOUTS

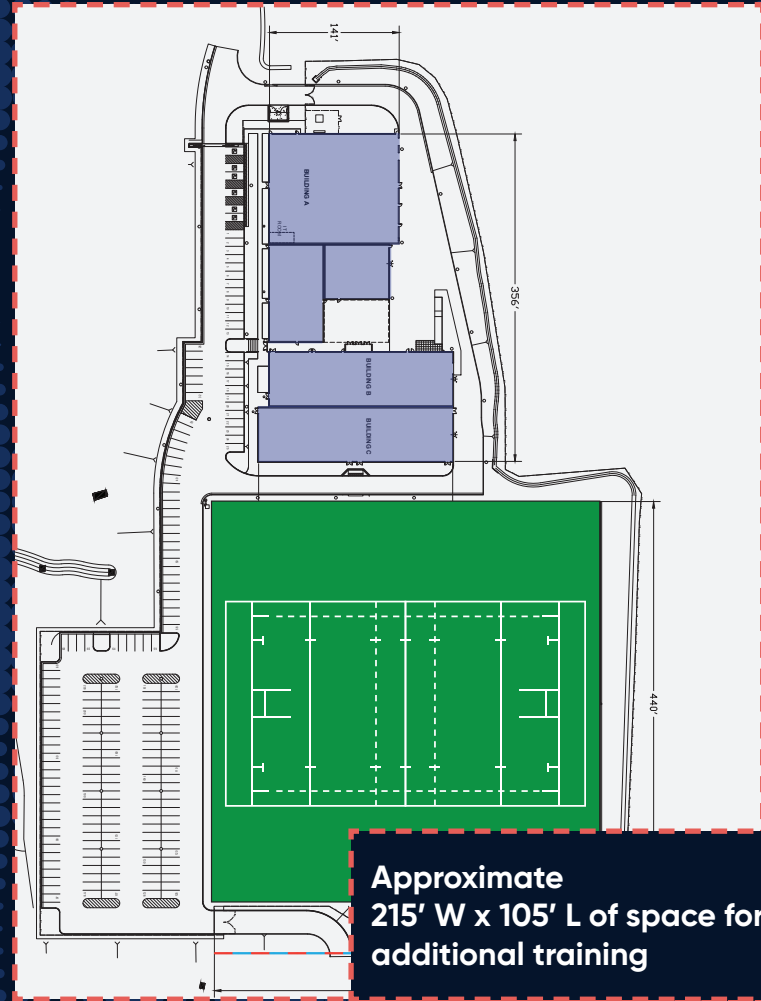


CRICKET FIELD CONFIGURATION



Approximate Min: 370' x Min: 370' of space for additional training

RUGBY FIELD CONFIGURATION



Approximate 215' W x 105' L of space for additional training

- RUGBY:** ±75 Yards Wide x ±105 Yards Long (225'W x 315'L)
- CRICKET:** ±10 Feet Wide x ±22 Yards Long (Min: 370' x Min: 370')
- POLO:** ±160 Yards Wide x ±300 Yards Long

THE NEIGHBORS



Thousand Oaks is situated about 40 miles northwest of downtown Los Angeles in Ventura County, California. It is known for its natural beauty with rolling hills, open spaces, and a scenic landscape. The city boasts well-kept parks, golf courses, and sports facilities. Other noteworthy teams that have utilized the CLU campus are the Canadian national softball team and European handball national teams.

THROUGH THE YEARS



1963 – 1989

Dallas Cowboys utilize campus facilities for their summer training camp.

2016

Los Angeles Rams select CLU for their training operations while permanent training facility is built. Rams installed 2 practice fields, a paved parking lot and 55,000 square feet of temporary modular buildings containing offices, training areas and locker rooms. The facilities supported 250 athletes, coaches, trainers and other staff members.

2004

Ground-breaking for the north campus athletics complex.

2022

Angel City Football Club, of the National Women's Soccer League, select CLU as the inaugural training site for the team. Angel City will support efforts to renovate the university's North Field, where it practices, laying the foundation for the site of a future track.

2024

Ventura County Football Club select CLU for their home season matches at the William Rolland Stadium. A MLS NEXT Pro organization brought top-tier professional talent and the highest level of competition to soccer enthusiasts to Ventura County.

Other CLU partnerships with high-level athletic teams: 2008 and 2012 US Olympic men's water polo teams trained in Samuelson Aquatics Center. USA Team Handball, European team handball national teams, Los Angeles Lightning basketball, Canadian national softball team, and Conejo Oaks collegiate summer baseball teams have also held events on the CLU campus.

Ready to score more details?

CLU

ATHLETIC FIELDS



TOM DWYER

Senior Vice President
Lic. 01197938
+1 805 320 6204
tom.dwyer@cbre.com

PHIL RUHL

Senior Vice President
Lic. 01968686
+1 213 613 3066
phil.ruhl@cbre.com

CHRIS SWATOSH

Senior Vice President
Lic. 01803294
+1 818 251 3655
chris.swatosh@cbre.com

CAROLINE BIGELOW

Senior Associate
Lic. 01177185
+1 805 288 4712
caroline.bigelow@cbre.com

MASON GRAY

Associate
Lic. 02035347
+1 805 901 7500
mason.gray@cbre.com

© 2024 CBRE, Inc. All rights reserved. This information has been obtained from reliable sources but has not been verified for accuracy or completeness. CBRE, Inc. makes no guarantee, representation, or warranty and accepts no responsibility or liability for the accuracy, completeness, or reliability of the information contained herein. You should conduct a careful, independent investigation of the property and verify all information. Any reliance on this information is solely at your own risk. CBRE and the CBRE logo are service marks of CBRE, Inc. All other marks displayed on this document are the property of their respective owners, and the use of such marks does not imply any affiliation with or endorsement of CBRE. Photos herein are the property of their respective owners. Use of these images without the express written consent of the owner is prohibited.

California Lutheran University

CBRE