

# RETAIL SHOPS AT WESTBURY



## FOR LEASE

4379 Grand River Avenue / Howell, MI

**AVAILABLE**  
**4,930 SF +/-**



RETAIL OPPORTUNITY

# RETAIL SHOPS AT WESTBURY



## Address

4379 Grand River Avenue  
Howell, MI 48843

## Features

- Endcap unit available for lease at the Retail Shops at Westbury.
- Situated near several big box users such as The Home Depot, Meijer, Walmart, Lowe's, Kohl's, and Tractor Supply Co., Gardner White, and many more.
- Pylon signage available on Grand River Avenue.
- Approximately 25,000 vpd on Grand River Avenue.

## Availability

4,930 SF (Divisible)

## Area Tenants



**HOBBY  
LOBBY**



**meijer**

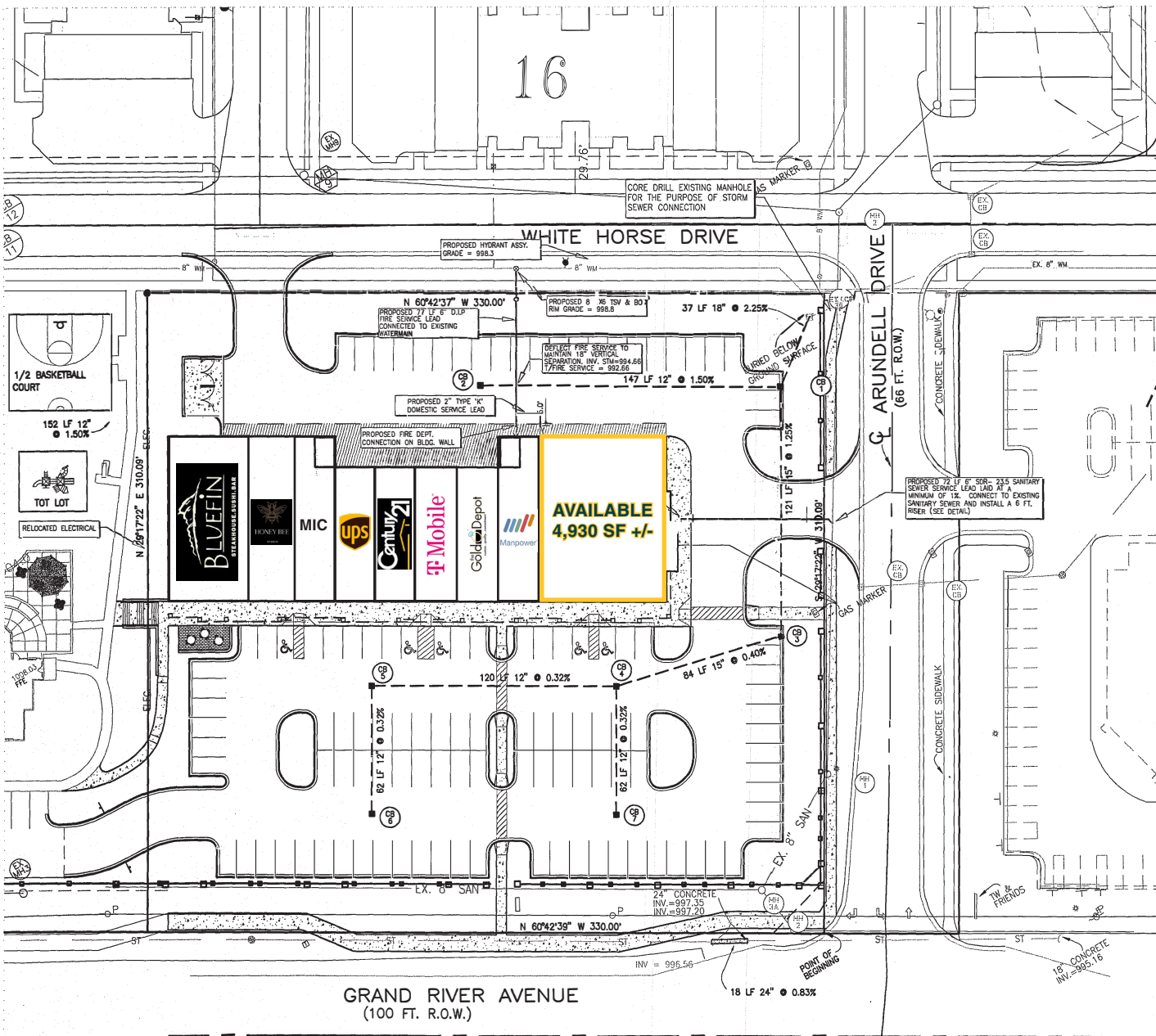


**GARDNER-WHITE**  
Michigan's Home Team Since 1912

## Demographics (2024)

	1 MILE	3 MILES	5 MILES
POPULATION	2,716	17,624	51,170
HOUSEHOLDS	1,373	7,212	20,834
AVG HOUSEHOLD INCOME	\$108,061	\$125,470	\$127,811
DAYTIME POPULATION	4,541	17,305	49,208

# RETAIL SHOPS AT WESTBURY



SCALE: 1 INCH = 30 FEET

# RETAIL SHOPS AT WESTBURY



# RETAIL SHOPS AT WESTBURY



# RETAIL SHOPS AT WESTBURY



Brad  
Rosenberg

Mid-America Real Estate -  
Michigan, Inc.

T: 248.855.6800

[BRosenberg@MidAmericaGrp.com](mailto:BRosenberg@MidAmericaGrp.com)



38500 Woodward Ave, Suite 100  
Bloomfield Hills, Michigan 48304  
248.855.6800

[MidAmericaGrp.com](http://MidAmericaGrp.com)

CONTACT