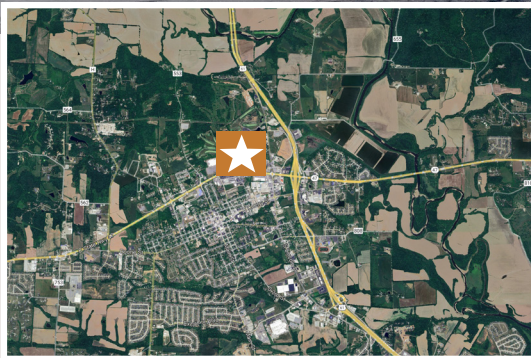




FOR LEASE

1,100 SF Retail/Office End Cap

20 Centerline Drive, Troy, MO 63379



Joe Schneider, CCIM, SIOR
Managing Partner
636.578.6069
joe@schneidercommercial.com

Keith Schneider, CCIM, SIOR
Managing Partner
314.520.2747
keith@schneidercommercial.com

1551 Wall Street, Suite 200
St. Charles, MO 63303
p: 636.949.9797
schneidercommercial.com

Space Details

- 1,100 SF Retail/Office Endcap Space Available for Lease
- Potential for Drive-Thru
- Unusually High Parking Ratio (Over 16 Spaces per 1,000 SF)
- Great Location with Convenient Access from Hwy 47 & Hwy 61
- Easy Access via Three (3) Curb Cuts
- Located in Fast-Growing Troy, MO in Lincoln County
- Zoned C-3 Highway Commercial District in City of Troy, MO
- Estimated 2024 NNNs: \$5.72/SF

LEASE RATE: \$18/SF NNN

No warranty or representation, express or implied, is made to the accuracy or completeness of the information contained herein, and same is submitted subject to errors, omissions, change of price, rental or other conditions, withdrawal without notice, and to any special listing conditions imposed by the property owner(s). As applicable, we make no representation as to the condition of the property (or properties) in question.



FOR LEASE

1,100 SF Retail/Office End Cap

20 Centerline Drive, Troy, MO 63379

Aerial & Interior Photos



Joe Schneider, CCIM, SIOR
Managing Partner
636.578.6069
joe@schneidercommercial.com

Keith Schneider, CCIM, SIOR
Managing Partner
314.520.2747
keith@schneidercommercial.com

1511 Wall Street, Suite 200
St. Charles, MO 63303
p: 636.949.9797
schneidercommercial.com

No warranty or representation, express or implied, is made to the accuracy or completeness of the information contained herein, and same is submitted subject to errors, omissions, change of price, rental or other conditions, withdrawal without notice, and to any special listing conditions imposed by the property owner(s). As applicable, we make no representation as to the condition of the property (or properties) in question.