

# LAYTON INDUSTRIAL

FOR SALE



## PROPERTY DETAILS

382 Marshall Way, Layton, UT 84041

- Purchase price: \$2,563,200
- 11,392 total square feet
  - » 9,600 SF warehouse space
  - » 1,792 SF mezzanine space
- Ease of access via I-15
- Nearby busy retail area of Layton
- Year built: 2004
- Clear height: 22'
- Doors: docks (2), at grade overhead bay (2)

## 2025 DEMOS



### EST. POPULATION

1 MILE » **13,451**  
3 MILE » **104,003**  
5 MILE » **187,398**



### EST. HOUSEHOLDS

1 MILE » **5,026**  
3 MILE » **34,600**  
5 MILE » **60,291**



### EST. AVERAGE HH INCOME

1 MILE » **\$89,406**  
3 MILE » **\$125,220**  
5 MILE » **\$136,901**



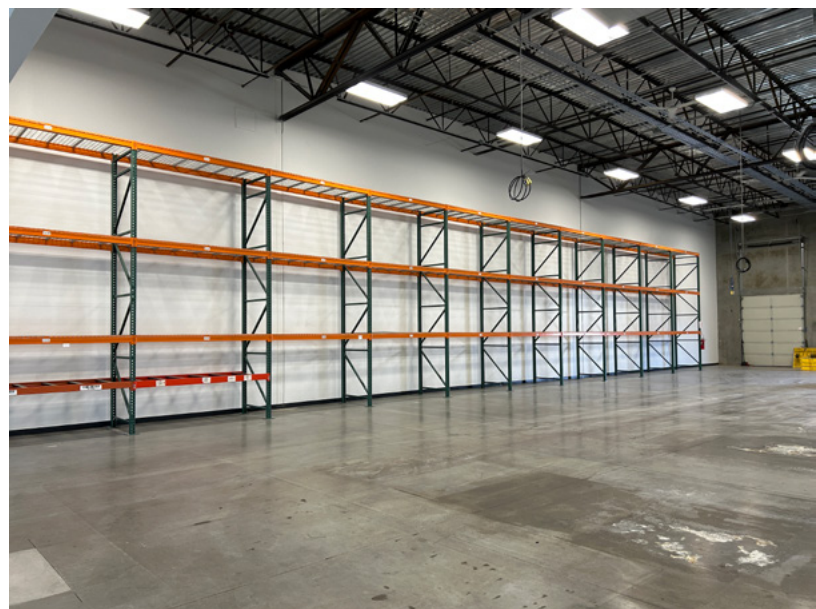
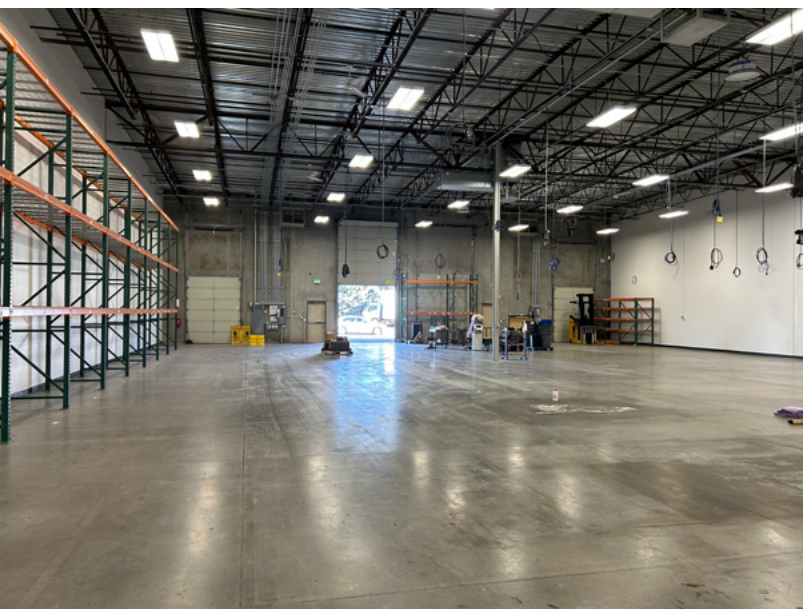
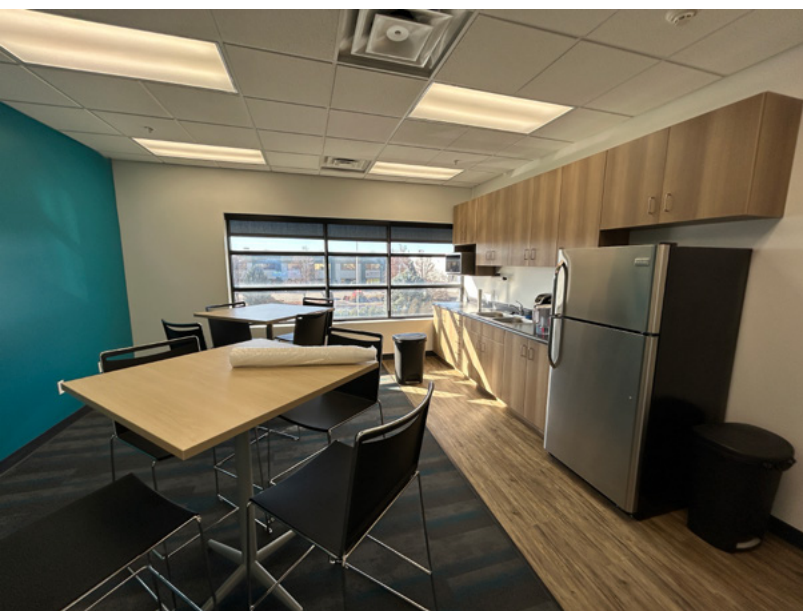
**RUSS HARRIS**  
rharris@newmarkmw.com  
direct 801.652.4990  
[View Profile](#)

**J.R. MOORE**  
jrmoore@newmarkmw.com  
direct 801.550.2030  
[View Profile](#)

**STEPHANIE BURANEK**  
sburanek@newmarkmw.com  
direct 801.755.1191  
[View Profile](#)

**FULL SERVICE  
COMMERCIAL REAL ESTATE**  
312 East South Temple  
Salt Lake City, Utah 84111  
Office 801.456.8800  
[www.newmarkmw.com](http://www.newmarkmw.com)





**RUSS HARRIS**  
rharris@newmarkmw.com  
direct 801.652.4990  
[View Profile](#)

**J.R. MOORE**  
jrmoore@newmarkmw.com  
direct 801.550.2030  
[View Profile](#)

**STEPHANIE BURANEK**  
sburanek@newmarkmw.com  
direct 801.755.1191  
[View Profile](#)

**FULL SERVICE  
COMMERCIAL REAL ESTATE**  
312 East South Temple  
Salt Lake City, Utah 84111  
Office 801.456.8800  
[www.newmarkmw.com](http://www.newmarkmw.com)





**RUSS HARRIS**  
 rharris@newmarkmw.com  
 direct 801.652.4990  
[View Profile](#)

**J.R. MOORE**  
 jrmoore@newmarkmw.com  
 direct 801.550.2030  
[View Profile](#)

**STEPHANIE BURANEK**  
 sburanek@newmarkmw.com  
 direct 801.755.1191  
[View Profile](#)

**FULL SERVICE  
 COMMERCIAL REAL ESTATE**  
 312 East South Temple  
 Salt Lake City, Utah 84111  
 Office 801.456.8800  
[www.newmarkmw.com](http://www.newmarkmw.com)