

211 Central Park West #1D
New York, NY 10024



NEW AMSTERDAM
TEAM

Edward Kalisvaart
Lic. Assoc. RE Broker
EdwardK@kw.com
(646) 321-4311

Richard Murray
Lic RE Salesperson
rmurray@kwnyc.com
(646) 271-0577



○ Prime Professional Space at The Iconic Beresford ● 211 Central Park West

An extraordinary opportunity to own a professional space in the prestigious Beresford, one of Manhattan's most iconic buildings. Located at 211 Central Park West, on the corner of West 81st Street, this approximately 2,800 square foot space is situated on the ground floor, offering a rare combination of convenience, visibility, and historic charm.

COOP FOR SALE

| | |
|-----------------|-------------|
| Asking | \$2,200,000 |
| Mo. Maintenance | \$4,513 |
| RSF | 2,800 |

Currently configured with a reception and waiting area, the space features 9 treatment rooms, 5 of which are equipped with water and sinks, making it ideal for medical, wellness, or other professional uses. With two bathrooms and a flexible layout, this space is designed to meet the needs of a variety of businesses.

A standout feature of this corner unit is its 10 oversized windows with dual exposures, flooding the space with natural light and offering serene views of Central Park. The private front entrance on Central Park West enhances accessibility for clients and guests, while providing an air of exclusivity.

Situated in a premier location, steps away from Central Park, this professional space offers an unparalleled address and endless potential.

Key Features:

- Iconic Beresford building on Central Park West Approximately
- 2,800 square feet of professional space Ground floor corner
- unit with 10 windows and dual exposures 9 treatment rooms,
- 5 with water and sinks
- Reception/waiting area and 2 bathrooms
- Private entrance on Central Park West
- Ideal for medical, wellness, or professional use

Don't miss your chance to establish your business at one of New York City's most coveted addresses.

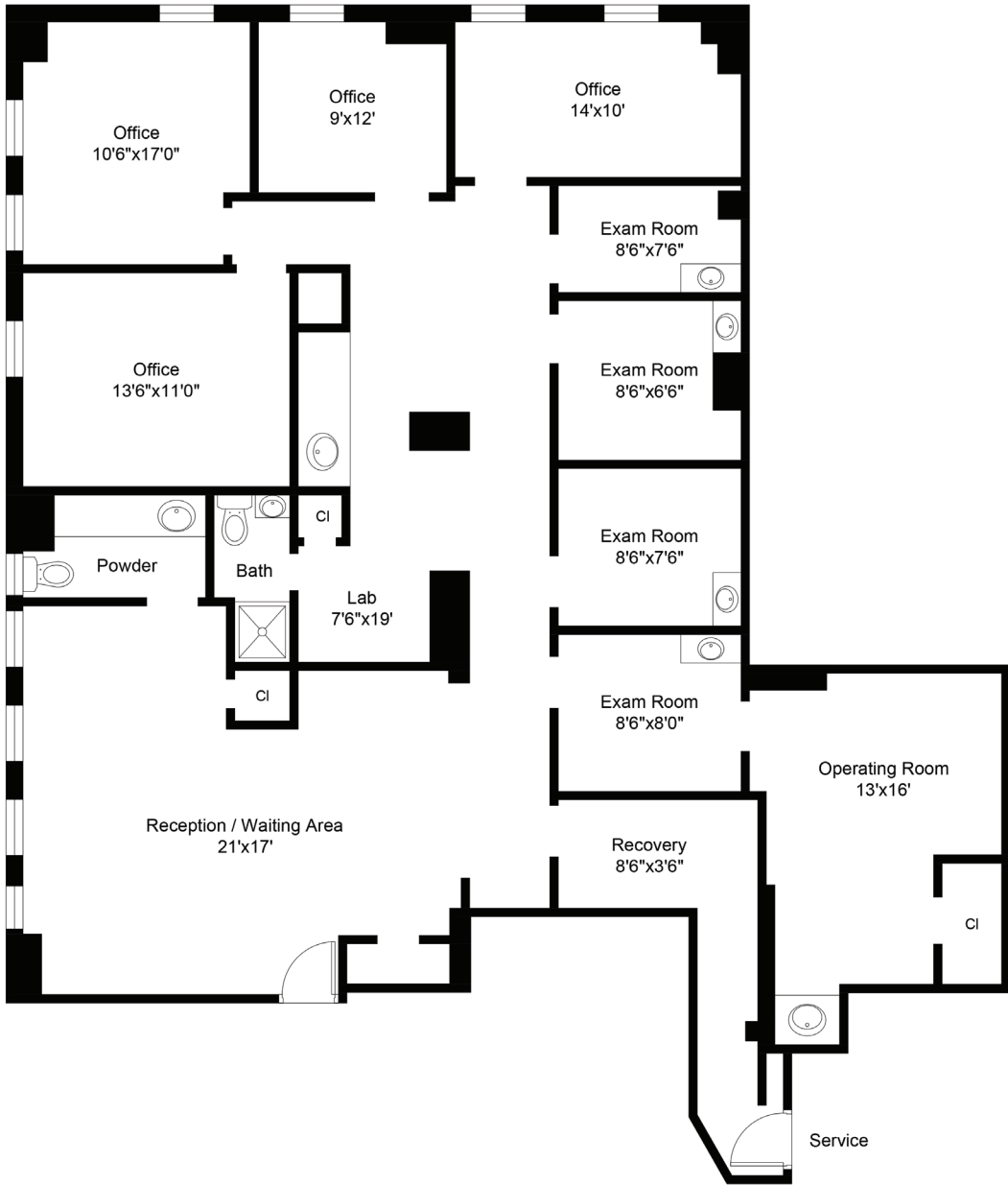
Edward Kalisvaart
Lic. Assoc. RE Broker
EdwardK@kw.com
(646) 321-4311

Richard Murray
Lic RE Salesperson
rmurray@kwnyc.com
(646) 271-0577

NEW AMSTERDAM
TEAM

211 Central Park West #1D New York, NY 10024

○
●
● Floor Plan



Edward Kalisvaart
Lic. Assoc. RE Broker
EdwardK@kw.com
(646) 321-4311

Richard Murray
Lic RE Salesperson
rmurray@kwnyc.com
(646) 271-0577

NEW AMSTERDAM
TEAM

211 Central Park West #1D New York, NY 10024

Hallway



Edward Kalisvaart
Lic. Assoc. RE Broker
EdwardK@kw.com
(646) 321-4311

Richard Murray
Lic RE Salesperson
rmurray@kwnyc.com
(646) 271-0577

NEW AMSTERDAM
TEAM

211 Central Park West #1D New York, NY 10024

Office



Edward Kalisvaart
Lic. Assoc. RE Broker
EdwardK@kw.com
(646) 321-4311

Richard Murray
Lic RE Salesperson
rmurray@kwnyc.com
(646) 271-0577

NEW AMSTERDAM
TEAM

211 Central Park West #1D New York, NY 10024



○ ● ● Reception



Edward Kalisvaart
Lic. Assoc. RE Broker
EdwardK@kw.com
(646) 321-4311

Richard Murray
Lic RE Salesperson
rmurray@kwnyc.com
(646) 271-0577

NEW AMSTERDAM
TEAM

211 Central Park West #1D New York, NY 10024

○
●
● Treatment room 1



○
●
● Treatment room 2



211 Central Park West #1D New York, NY 10024

○ ● ● Treatment room 3



○ ● ● Treatment room 4



211 Central Park West #1D New York, NY 10024

○ ● ● ● Treatment room 5



○ ● ● ● Treatment room 6



211 Central Park West #1D
New York, NY 10024

NEW AMSTERDAM

TEAM at Keller Williams NYC

Edward Kalisvaart
Licensed Associate Real Estate Broker
EdwardK@KW.com
(646) 321-4311

Richard Murray
Licensed Real Estate Salesperson
rmurray@kwnyc.com
(646) 271-0577

360 Madison Ave 9th Floor. New York, NY 10017

Each office is independently owned and operated.

