

11 Main Street Southborough, MA

For Lease



(6) Retail Units for Lease

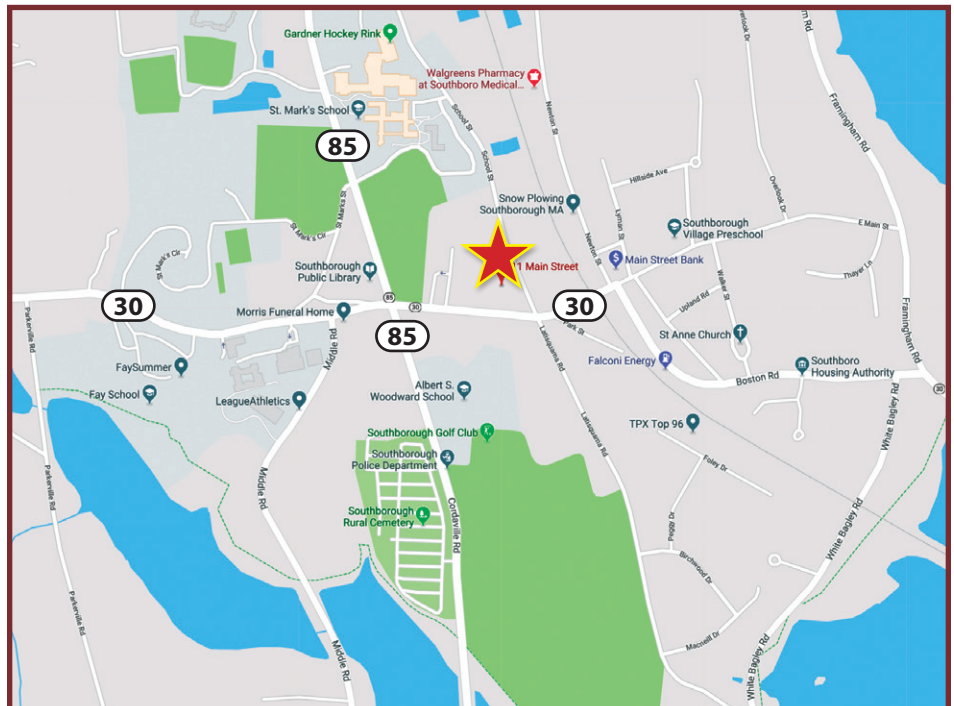
The building has a great tenant mix! Southborough Dental Associates anchors this plaza along with a daycare and other long term tenants!

Contact Exclusive Agent:

Bret O'Brien *President*
bret@greaterbostoncp.com • 508-925-7477

James Keefe *Vice President*
james@greaterbostoncp.com • 508-948-3474

Legal Disclaimer: Every effort has been made to furnish the most accurate information available on this property. However, all statements and conditions contained herein are subject to errors, omissions, prior sale or removal from the market without notice.



www.greaterbostoncp.com

GREATER BOSTON COMMERCIAL PROPERTIES INC.

44 Bearfoot Road, Suite 375, Northborough, MA 01532

11 Main Street Southborough, MA

For Lease



Located in the heart of Southborough, seconds away from the Southborough Police Department and Town Hall service buildings. This is a great opportunity to be a tenant in an already thriving building! Space is perfect for, but not limited to, a dance or karate studio as well as any other retail use that would benefit from tons of local traffic!



Contact Exclusive Agent:

Bret O'Brien *President*
bret@greaterbostoncp.com • 508-925-7477

James Keefe *Vice President*
james@greaterbostoncp.com • 508-948-3474

Legal Disclaimer: Every effort has been made to furnish the most accurate information available on this property. However, all statements and conditions contained herein are subject to errors, omissions, prior sale or removal from the market without notice.

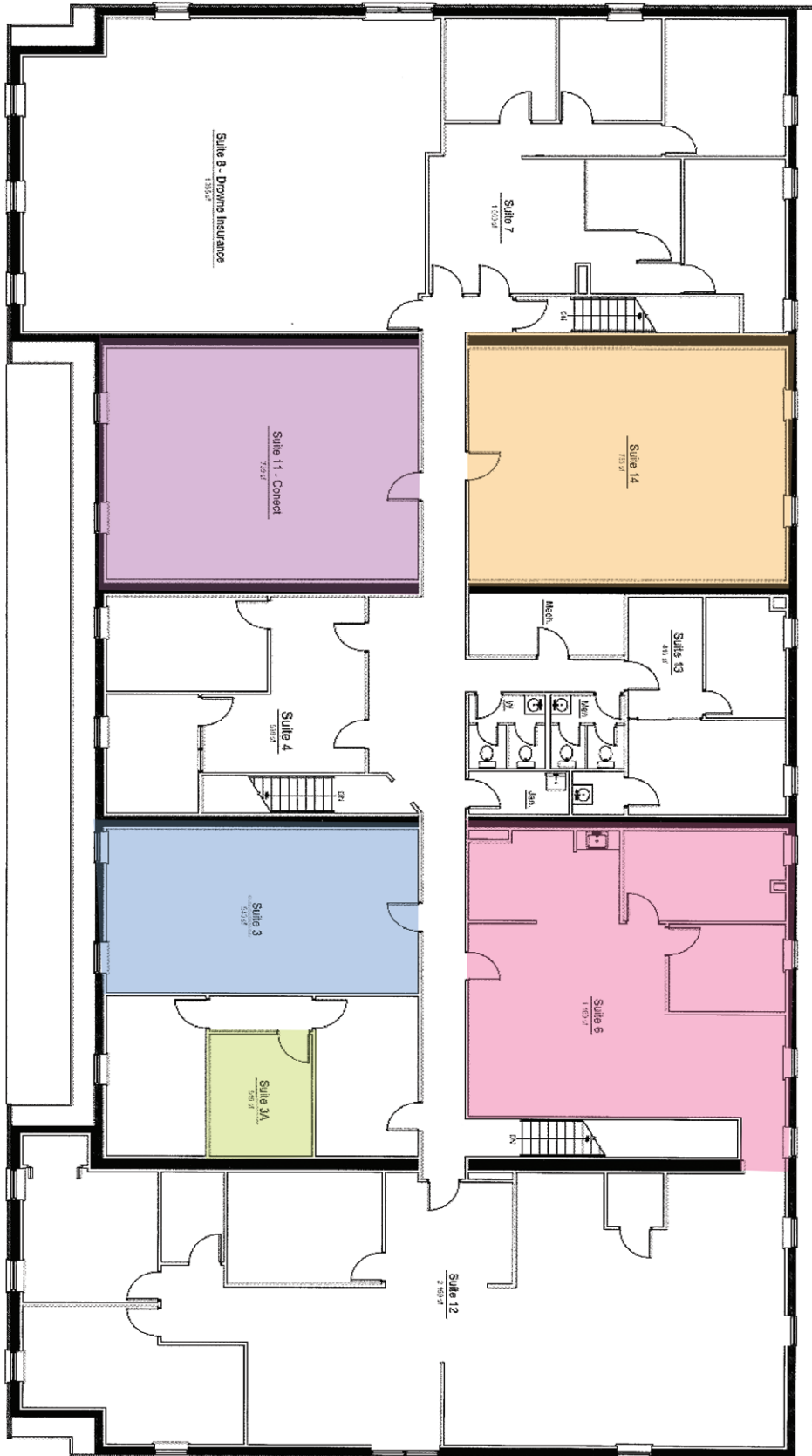
www.greaterbostoncp.com

GREATER BOSTON
COMMERCIAL PROPERTIES INC.

44 Bearfoot Road, Suite 375, Northborough, MA 01532

11 Main Street Southborough, MA

For Lease



SECOND FLOOR PLAN

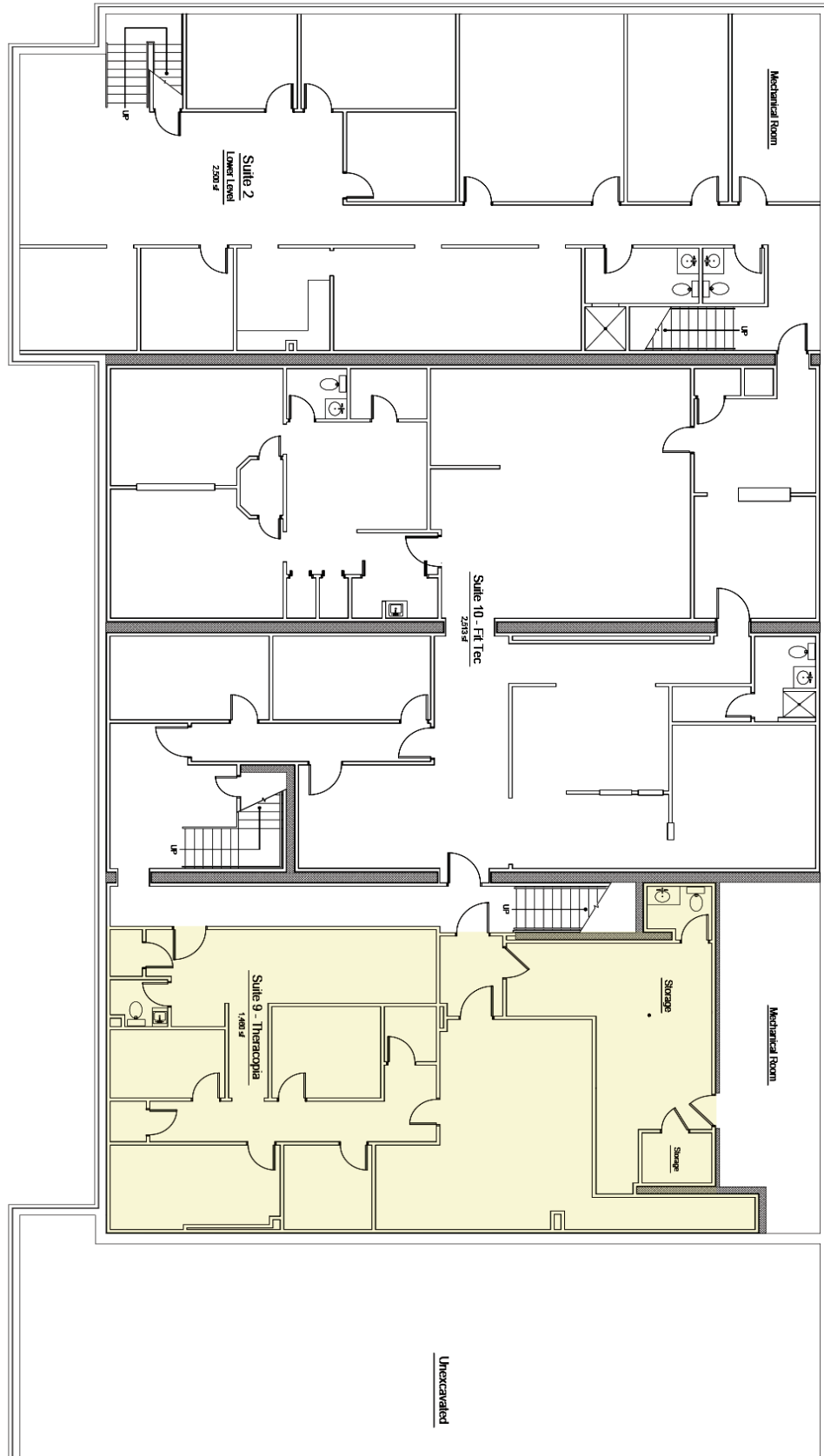
Scale: 1/8" = 1'-0"

10,700 sq ft Conditioned Space

11 Main Street

Southborough, MA

For Lease



BASEMENT FLOOR PLAN

Scale: 1/8" = 1'-0"

8,000 sq' Conditioned Space