



## FOR SALE | \$3,087,600.00/\$155 SF

- 5290 Atlanta Hwy Alpharetta, GA. 30004
- 112 Mauldin Dr Alpharetta, GA. 30004

- 2 Parcels listed together for sale
  - **5290 Atlanta Hwy**
    - Parcel #: 017 028
    - 0.95 +/- Acres
    - **2 stand-alone buildings:**
      - **8,820 +/- Square Feet**
        - built in 1983
      - **5,850 +/- Square Feet**
        - built in 1998
    - Zoning: CBD
    - Road Frontage: 207 +/- Feet on Atlanta Hwy
    - tenant in place - do not disturb
    - Taxes 2025: \$7,924.35
  - **112 Mauldin Dr**
    - Parcel #: 017 029
    - 0.78 +/- Acres
    - **1 stand alone building**
      - **5,250 +/- Square Feet**
        - built in 1998
    - Zoning: CBD
    - Tenant in place - do not disturb
    - Taxes 2025: \$5,290.18
  - **Showings by appointment only**
    - listing agent must be present, no exceptions
  - **more photos coming soon**



Presented by: Doug Sills

✉ [Doug@BagleyCommercial.com](mailto:Doug@BagleyCommercial.com)

☎ 7770.781.5935 (office)

☎ 678.923.5538 (direct)

🌐 [BagleyCommercial.com](http://BagleyCommercial.com)

*\*All information believed accurate but not warranted. Buyer responsible for verification.*


[www.BagleyCommercial.com](http://www.BagleyCommercial.com)


## DRONE PHOTOS: 5290 ATLANTA HWY + 112 MAULDIN DR



Presented by: Doug Sills

 [Doug@BagleyCommercial.com](mailto:Doug@BagleyCommercial.com)

 7770.781.5935 (office)

 [678.923.5538](tel:678.923.5538) (direct)

 [BagleyCommercial.com](http://BagleyCommercial.com)

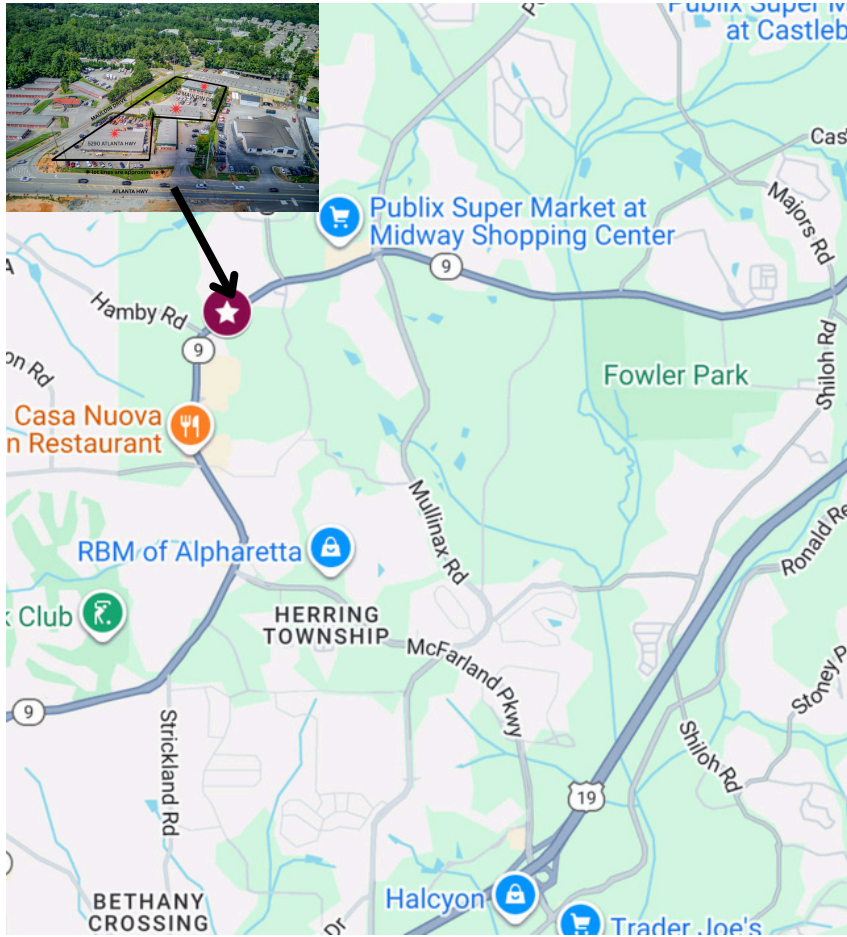
*\*All information believed accurate but not warranted. Buyer responsible for verification.*

[www.BagleyCommercial.com](http://www.BagleyCommercial.com)

# LOCATION OF PROPERTY

✱ 5290 Atlanta Hwy

✱ 112 Mauldin Dr



Presented by: Doug Sills

✉ [Doug@BagleyCommercial.com](mailto:Doug@BagleyCommercial.com)

7770.781.5935 (office)

678.923.5538 (direct)

🌐 [BagleyCommercial.com](http://BagleyCommercial.com)

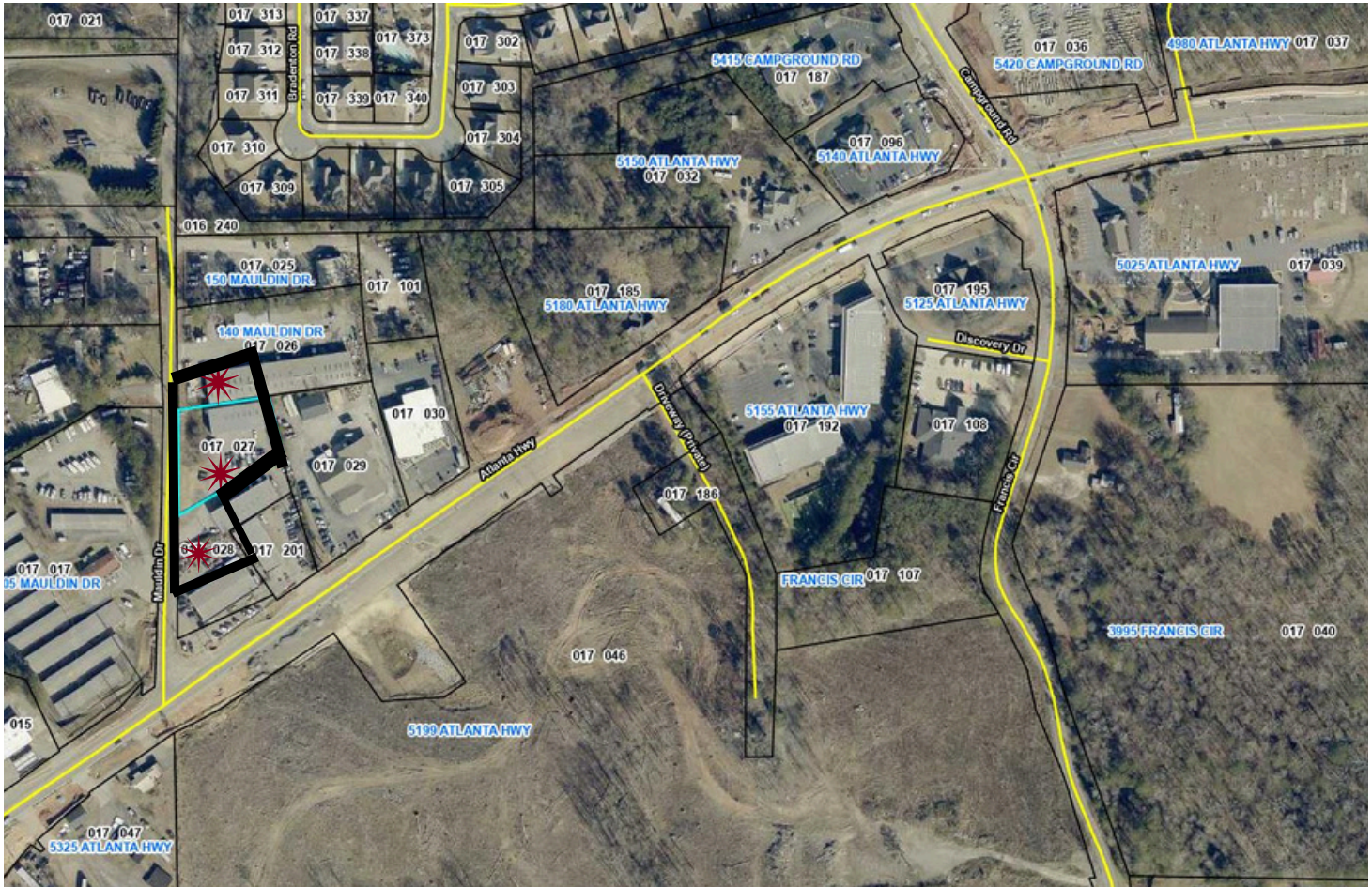
*\*All information believed accurate but not warranted. Buyer responsible for verification.*

[www.BagleyCommercial.com](http://www.BagleyCommercial.com)

# LOCATION OF PROPERTY

5290 ATLANTA HWY

112 MAULDIN DR



**\*Lot Lines are Approximate\***



Presented by: Doug Sills

✉ [Doug@BagleyCommercial.com](mailto:Doug@BagleyCommercial.com)

7770.781.5935 (office)

678.923.5538 (direct)

🌐 [BagleyCommercial.com](http://BagleyCommercial.com)

*\*All information believed accurate but not warranted. Buyer responsible for verification.*

[www.BagleyCommercial.com](http://www.BagleyCommercial.com)



## About Bagley Commercial

With over 53 years of combined experience, Bagley Commercial Properties stands among North Georgia's elite real estate firms. The 400 North Board's Circle of Excellence and the title of Best in Forsyth County Commercial Real Estate for six consecutive years. Based in Cumming, the brokerage specializes in industrial, office, retail, land, and commercial transactions. They're known for assembling land parcels for residential and commercial builders, leasing, or selling to national and local clients alike.

Bagley Commercial prides itself on a foundation of integrity, transparency, and exceptional service—now backed by a proven track record and deep local market knowledge.

### For questions, contact.




Doug Sills


**Commercial Sales & Leasing Specialist | Associate Broker**


Doug Sills, commercial real estate is about more than buildings and numbers—it's about people, vision, and creating opportunities that last. A Georgia resident for nearly three decades, Doug brings both local expertise and a client-centered approach to every transaction. His background in psychology and professional counseling gives him a unique ability to understand client goals deeply and guide them with clarity and confidence.

Presented by: Doug Sills

 [Doug@BagleyCommercial.com](mailto:Doug@BagleyCommercial.com)

 7770.781.5935 (office)

 [678.923.5538](tel:678.923.5538) (direct)

 [BagleyCommercial.com](http://BagleyCommercial.com)

Specializing in industrial, retail, investment properties, and land acquisition, Doug helps developers, investors, and business owners make smart, strategic decisions. Whether assembling parcels for a new project, matching landlords with long-term tenants, or guiding investors to high-yield opportunities, he combines data-driven insight with a personal commitment to his clients' success.

 [info@bagleycommercial.com](mailto:info@bagleycommercial.com)

 [www.BagleyCommercial.com](http://www.BagleyCommercial.com)

104 Pilgrim Village Drive, Suite 400, Cumming, GA 30040

Disclaimer: The information included in this packet has been obtained from sources believed to be reliable. While Bagley Commercial Properties does not doubt its accuracy, we do not make any guarantees or warranties with regard to the included information. It is your responsibility to independently confirm its accuracy and completeness. References to square footage or age are approximate. You and your advisors should conduct a careful, independent investigation of the property to determine to your satisfaction the suitability of the property for your needs. The information contained in this packet is proprietary and confidential, and should not be distributed to any other potential Tenant without the consent of Bagley Commercial Properties.

[www.BagleyCommercial.com](http://www.BagleyCommercial.com)