

# Aliante Corporate Center

2550 & 2590 Nature Park Drive, North Las Vegas, NV 89084



2,121 to 2,436 SF  
Office Space Available for Lease



**N**orth Las Vegas' master planned community of Aliante is the setting for 2550 & 2950 Nature Park Drive, a two-building office campus offering Class A space and an exceptionally convenient location with immediate access to I-215, ample retail amenities, and abundant onsite parking – in one of the fastest growing cities in the country.

Located directly across the street from Aliante Corporate Center is a neighborhood anchored shopping center, which includes a variety of restaurants, cafes, banking and financial services.

## Property Highlights

- » Generous TI Allowances
- » High visibility signage opportunities
- » Reserved, covered parking available (Up to 5:1)



# Aliante Corporate Center

2550 Nature Park Drive, North Las Vegas, NV 89084

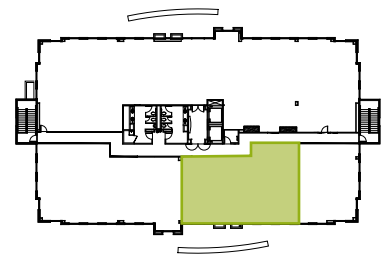
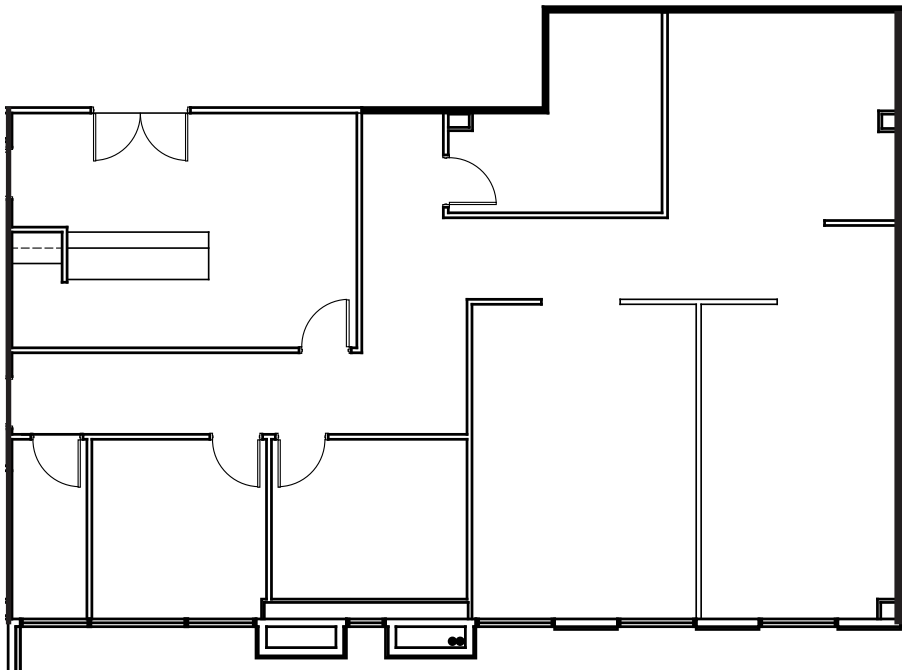


Virtual Tour

## SUITE 200

±2,436 RSF | AS-BUILT

**\$2.10** /RSF/Month Modified Gross



### Charles Van Geel

Senior Director  
+1 702 688 6966  
charles.vangeel@cushwake.com  
LIC #BS.0044616

### Matthew Beban

Associate  
+1 702 449 2431  
matthew.beban@cushwake.com  
LIC #S.0202638

10845 Griffith Peak Dr., Suite 160, Las Vegas, NV 89135 | Main +1 702 796 7900 | Fax +1 702 796 7920 | [cushmanwakefield.com](http://cushmanwakefield.com)

©2025 Cushman & Wakefield. All rights reserved. The information contained in this communication is strictly confidential. This information has been obtained from sources believed to be reliable but has not been verified. NO WARRANTY OR REPRESENTATION, EXPRESS OR IMPLIED, IS MADE AS TO THE CONDITION OF THE PROPERTY (OR PROPERTIES) REFERENCED HEREIN OR AS TO THE ACCURACY OR COMPLETENESS OF THE INFORMATION CONTAINED HEREIN, AND SAME IS SUBMITTED SUBJECT TO ERRORS, OMISSIONS, CHANGE OF PRICE, RENTAL OR OTHER CONDITIONS, WITHDRAWAL WITHOUT NOTICE, AND TO ANY SPECIAL LISTING CONDITIONS IMPOSED BY THE PROPERTY OWNER(S). ANY PROJECTIONS, OPINIONS OR ESTIMATES ARE SUBJECT TO UNCERTAINTY AND DO NOT SIGNIFY CURRENT OR FUTURE PROPERTY PERFORMANCE. COE-PM-WEST- 01/17/25

# Aliante Corporate Center

2590 Nature Park Drive, North Las Vegas, NV 89084

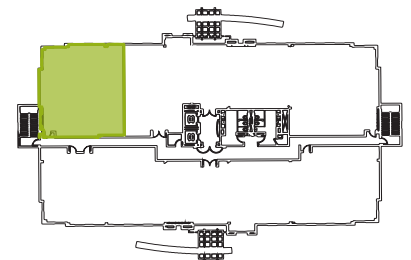
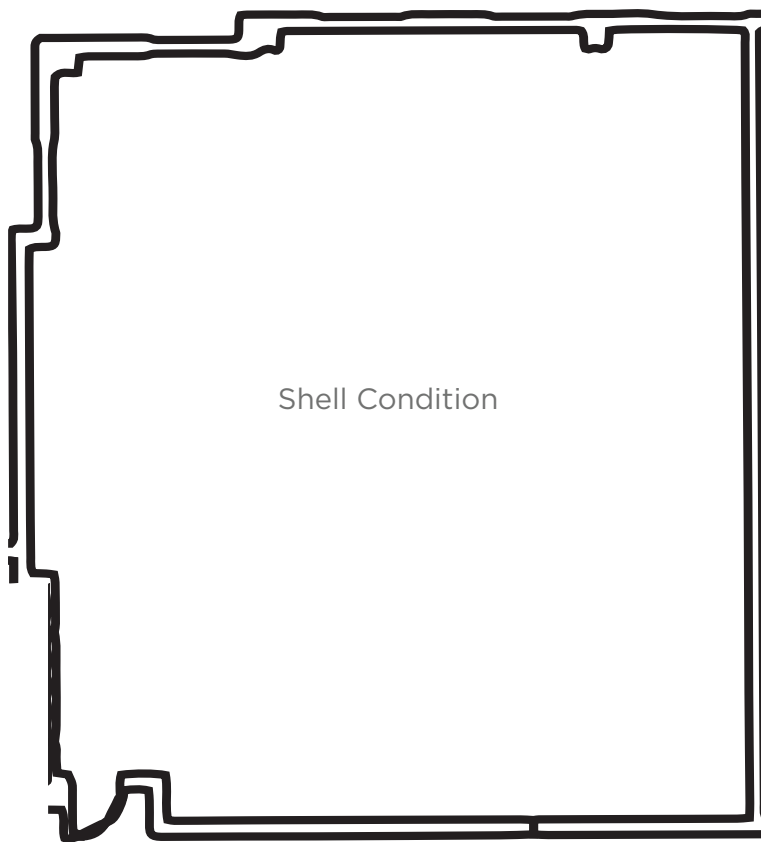


Virtual Tour

## SUITE 275

± 2,121 RSF | GRAY SHELL

**\$2.10** /RSF/Month Modified Gross



### Charles Van Geel

Senior Director

+1 702 688 6966

[charles.vangeel@cushwake.com](mailto:charles.vangeel@cushwake.com)

LIC #BS.0044616

### Matthew Beban

Associate

+1 702 449 2431

[matthew.beban@cushwake.com](mailto:matthew.beban@cushwake.com)

LIC #S.0202638

10845 Griffith Peak Dr., Suite 160, Las Vegas, NV 89135 | Main +1 702 796 7900 | Fax +1 702 796 7920 | [cushmanwakefield.com](http://cushmanwakefield.com)

©2025 Cushman & Wakefield. All rights reserved. The information contained in this communication is strictly confidential. This information has been obtained from sources believed to be reliable but has not been verified. NO WARRANTY OR REPRESENTATION, EXPRESS OR IMPLIED, IS MADE AS TO THE CONDITION OF THE PROPERTY (OR PROPERTIES) REFERENCED HEREIN OR AS TO THE ACCURACY OR COMPLETENESS OF THE INFORMATION CONTAINED HEREIN, AND SAME IS SUBMITTED SUBJECT TO ERRORS, OMISSIONS, CHANGE OF PRICE, RENTAL OR OTHER CONDITIONS, WITHDRAWAL WITHOUT NOTICE, AND TO ANY SPECIAL LISTING CONDITIONS IMPOSED BY THE PROPERTY OWNER(S). ANY PROJECTIONS, OPINIONS OR ESTIMATES ARE SUBJECT TO UNCERTAINTY AND DO NOT SIGNIFY CURRENT OR FUTURE PROPERTY PERFORMANCE. COE-PM-WEST- 01/17/25





# Aliante Corporate Center

**Charles Van Geel**  
Senior Director  
+1 702 688 6966  
[charles.vangeel@cushwake.com](mailto:charles.vangeel@cushwake.com)  
LIC #BS.0044616

**Matthew Beban**  
Associate  
+1 702 449 2431  
[matthew.beban@cushwake.com](mailto:matthew.beban@cushwake.com)  
LIC #S.00202638

10845 Griffith Peak Dr., Suite 160, Las Vegas, NV 89135 | Main +1 702 796 7900 | Fax +1 702 796 7920 | [cushmanwakefield.com](http://cushmanwakefield.com)