



5665 Flatiron Parkway

Suite 250, Boulder, CO

Lynda Gibbons

lynda@gibbonswhite.com
(303) 586-5920

Annie Lund

annie@gibbonswhite.com
(303) 586-5922

Steve Sims

steve@gibbonswhite.com
(303)-586-5932

www.gibbonswhite.com



Property Info & Gallery



View Map

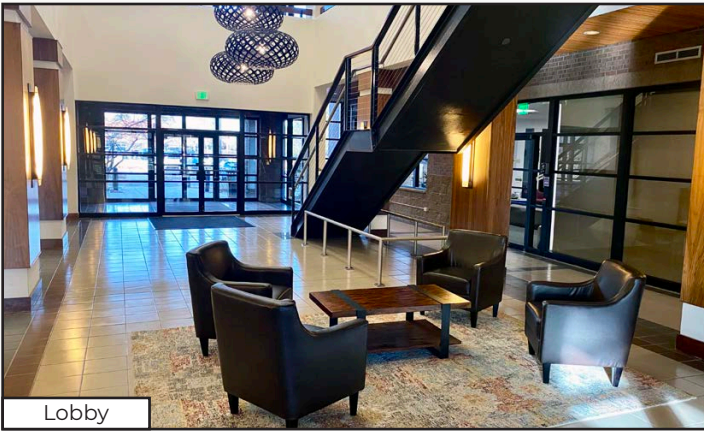
Exceptional Office Space in Flatiron Park

Available Space	4,000 - 10,526 sq. ft.
Lease Rate / sq. ft.	\$20.00 NNN
Expenses / sq. ft.	\$15.00 NNN

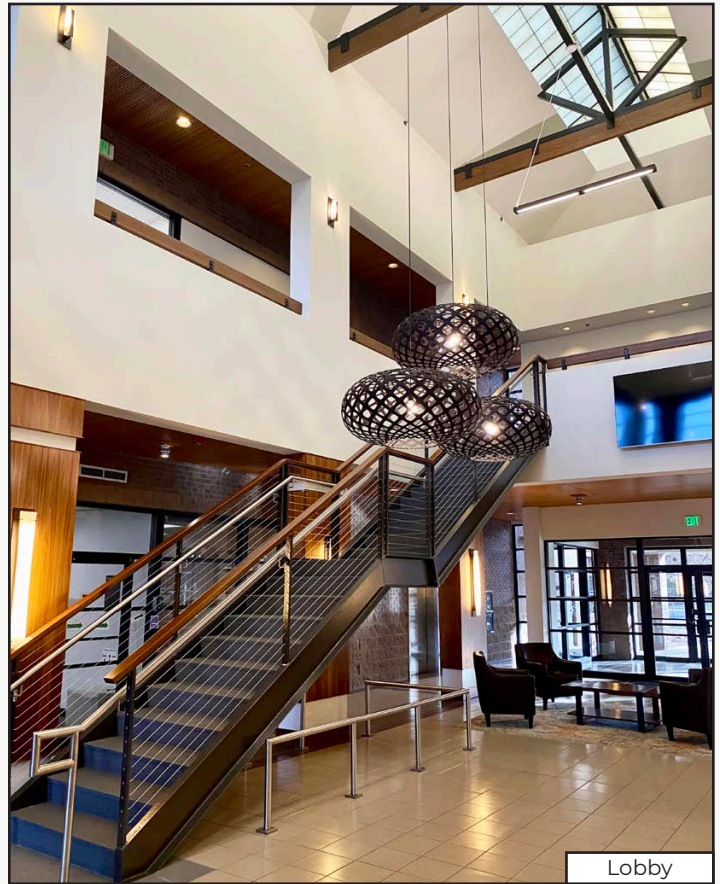
*Including Janitorial and Utilities

- Great Office Opportunity in the Heart of Flatiron Park with a Nice Mix of Private Offices & Open Areas
- Recently Remodeled Common Areas Create a Warm & Inviting Entrance
- Outdoor Gathering Spaces & Furnishings Provide a Great Place for Mid-Day Breaks, Lunches or Meetings
- Beautiful Skylights Above the Reception Area Bringing in Lots of Natural Light
- Private Restrooms & Shower Room Inside the Suite
- Ample Parking Spaces Onsite at No Additional Cost As Well As Bus & Bike Path Options Nearby
- Flatiron Park Provides Easy Access from All Parts of Boulder & Areas to the East Along Hwy 36 & Hwy 119
- Co-Tenants in the Building Include Garmin International & Magic Leap
- Flatiron Park is Home to Some of Boulder's Best Creative, Tech & Life Sciences Companies & Will Soon See the Arrival of Apple as They Move Into Their New 115,000 sq. ft. Office
- Close to Breweries & Restaurants Such as Ozo Coffee, Upslope Brewing, Wild Provisions Beer Project, Baby Goat Coffee, Blackbelly Restaurant, Snarf's Sandwiches & Pica's Taqueri

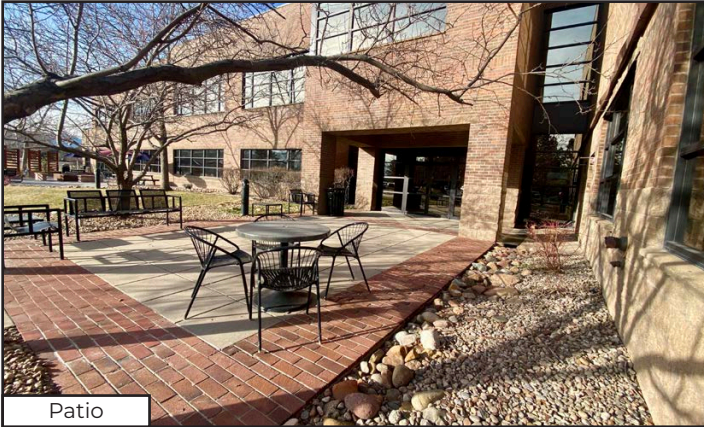
The information included has been obtained from sources believed reliable. While we do not doubt the accuracy of the information, it has not been verified and no guarantee, warranty, or representation is being made.



Lobby



Lobby



Patio



The information included has been obtained from sources believed reliable. While we do not doubt the accuracy of the information, it has not been verified and no guarantee, warranty, or representation is being made.