



**CUSHMAN &
WAKEFIELD**



**COMMERCIAL
ADVISORS**



— 8,988 SF AVAILABLE —
**MEDICAL OFFICE
FOR LEASE OR SALE**

1231 E RAINES RD

MEMPHIS, TN 38116

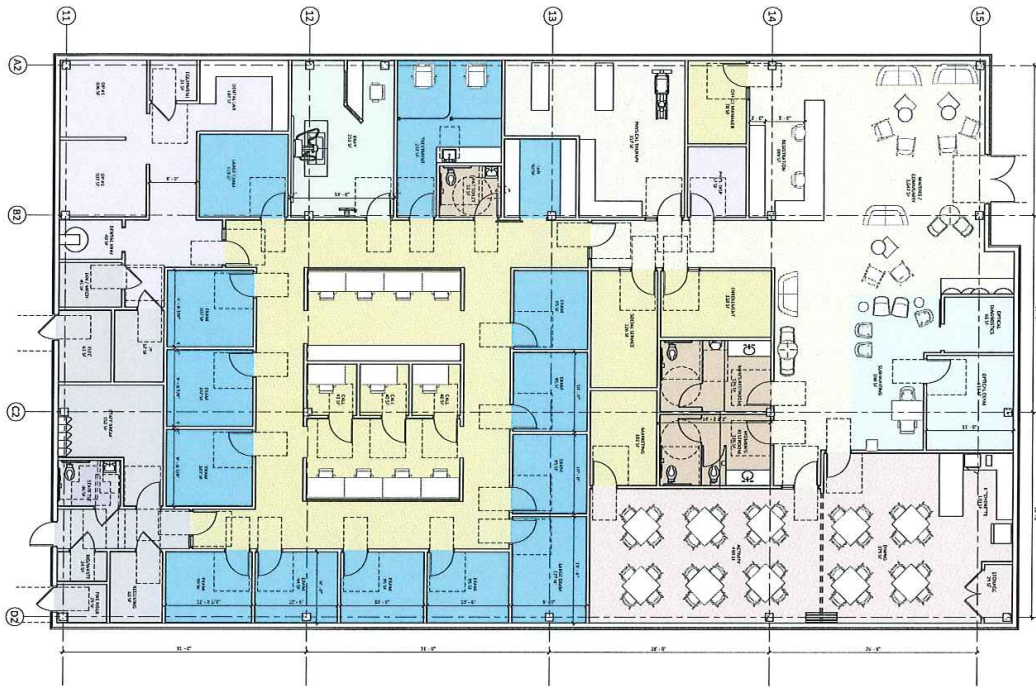
Matt Weathersby, SIOR, CCIM
Principal
+1 901 362 4317
mweathersby@commadv.com

Luke Jensen, SIOR
Senior Vice President
+1 901 362 4313
luke.jensen@commadv.com

Larry Jensen, SIOR
Chairman, Principal
+1 901 273 2344
lj@commadv.com

PROPERTY INFORMATION

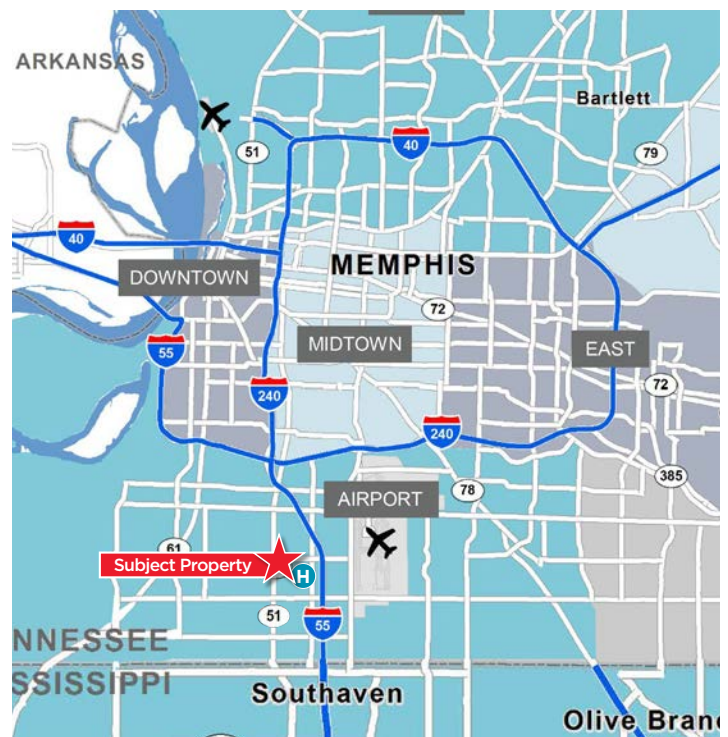
Floor Plan



Opportunity to acquire a
FREESTANDING, FULLY BUILT-OUT MEDICAL OFFICE BUILDING!

OPPORTUNITY HIGHLIGHTS

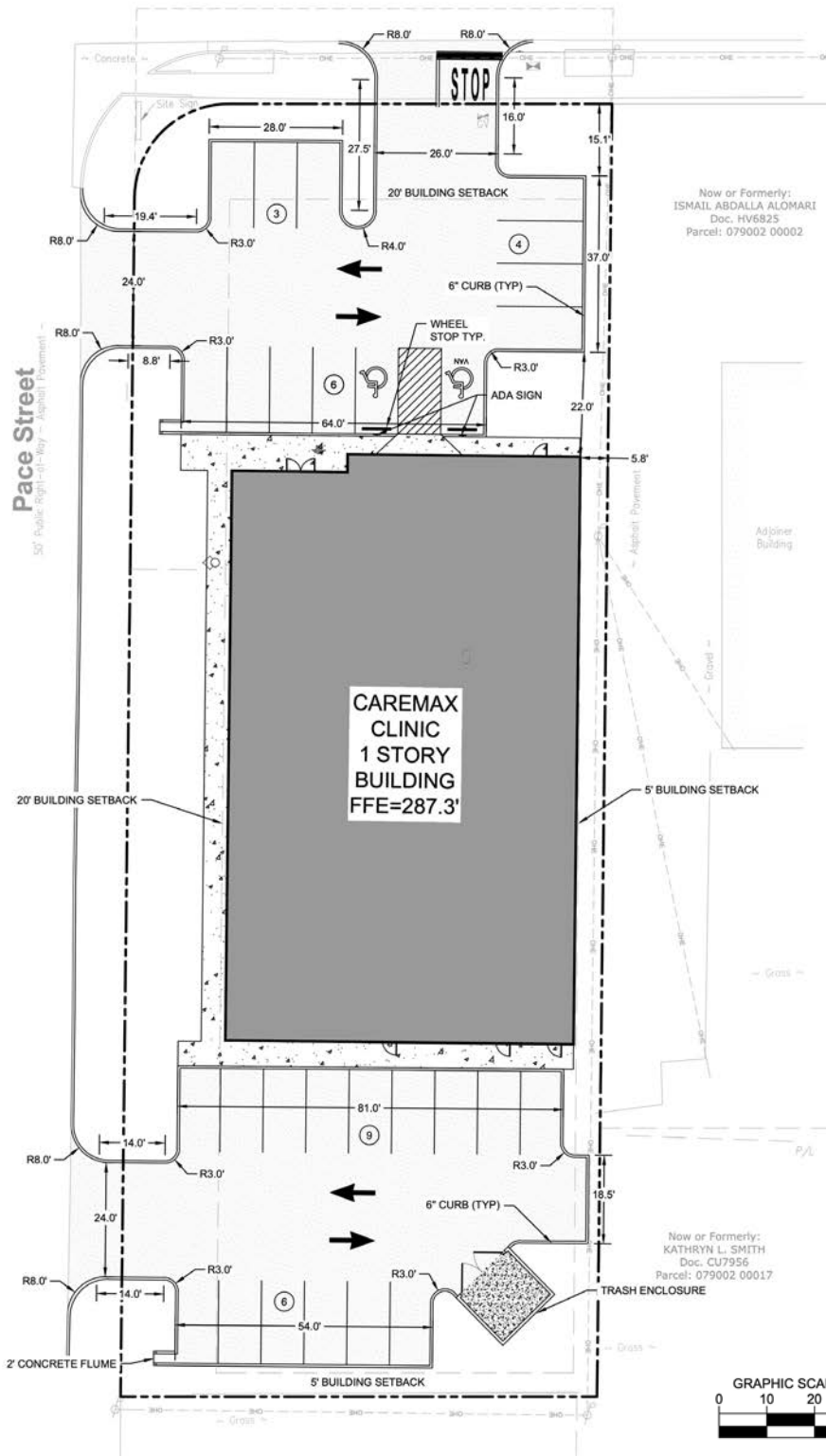
- Ownership will consider office or retail use
- 8,988 SF Available
- Brand New Medical Office Construction
- 12 Exam Rooms
- Two X-Ray Rooms with lead-lined walls
- Lab
- Pharmacy
- Designed for Dental, Optical, Physical Therapy, and Family Practice
- 28 Parking Spaces plus Street Parking



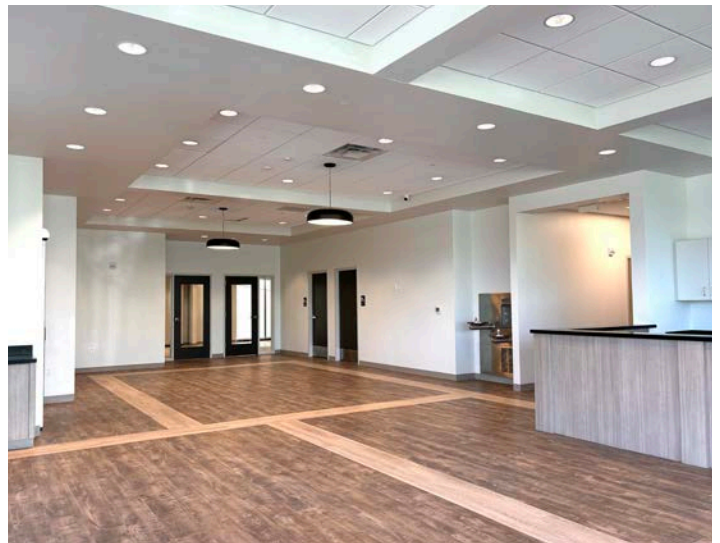
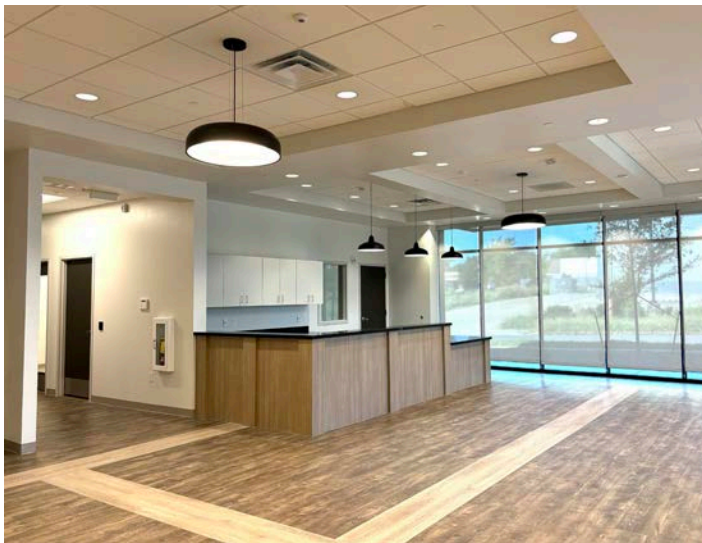
PROPERTY SITE PLAN

East Raines Road

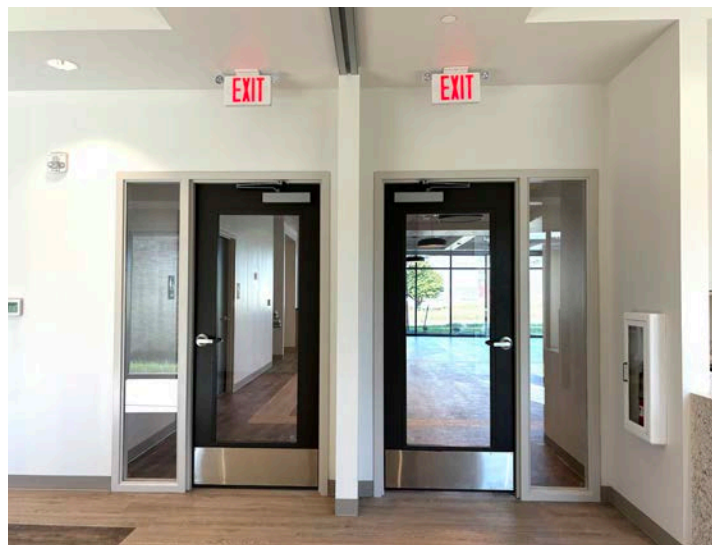
Public Right-of-Way - Asphalt Pavement -



PROPERTY PHOTOS



PROPERTY PHOTOS



1231 E RAINES RD

MEMPHIS, TN 38116



Matt Weathersby, SIOR, CCIM

Principal
+1 901 362 4317
mweathersby@commadv.com

Luke Jensen, SIOR

Senior Vice President
+1 901 362 4313
luke.jensen@commadv.com

Larry Jensen, SIOR

Chairman, Principal
+1 901 273 2344
lj@commadv.com



**CUSHMAN &
WAKEFIELD**



**COMMERCIAL
ADVISORS**

Independently Owned and Operated / A Member of the Cushman & Wakefield Alliance

Cushman & Wakefield Copyright 01/10/25. No warranty or representation, express or implied, is made to the accuracy or completeness of the information contained herein, and same is submitted subject to errors, omissions, change of price, rental or other conditions, withdrawal without notice, and to any special listing conditions imposed by the property owner(s). As applicable, we make no representation as to the condition of the property (or properties) in question.

5101 Wheelis Drive, Suite 300
Memphis, TN 38117
Main: 901 366 6070
www.commadv.com