



RESTAURANT SPACE FOR LEASE

535 S. Walnut St.
Bloomington, IN 47401

Total leasing SF +/- 2,169

Zoning Downtown Gateway Downtown
Character Overlay (MD-DG)

Lease Price **\$25/SF**

Lease Type **NNN**

Former Arby's restaurant available for lease at 535 S. Walnut St., offering approximately $\pm 2,169$ square feet of freestanding retail space. The property features an existing drive-thru window, making it ideal for quick-service restaurants, coffee concepts, or other high-traffic retail uses.

The site includes a dedicated on-site parking lot, providing convenient customer access and strong visibility. The existing building layout allows for efficient conversion to a variety of food service or retail concepts, with potential for reuse of drive-thru infrastructure.

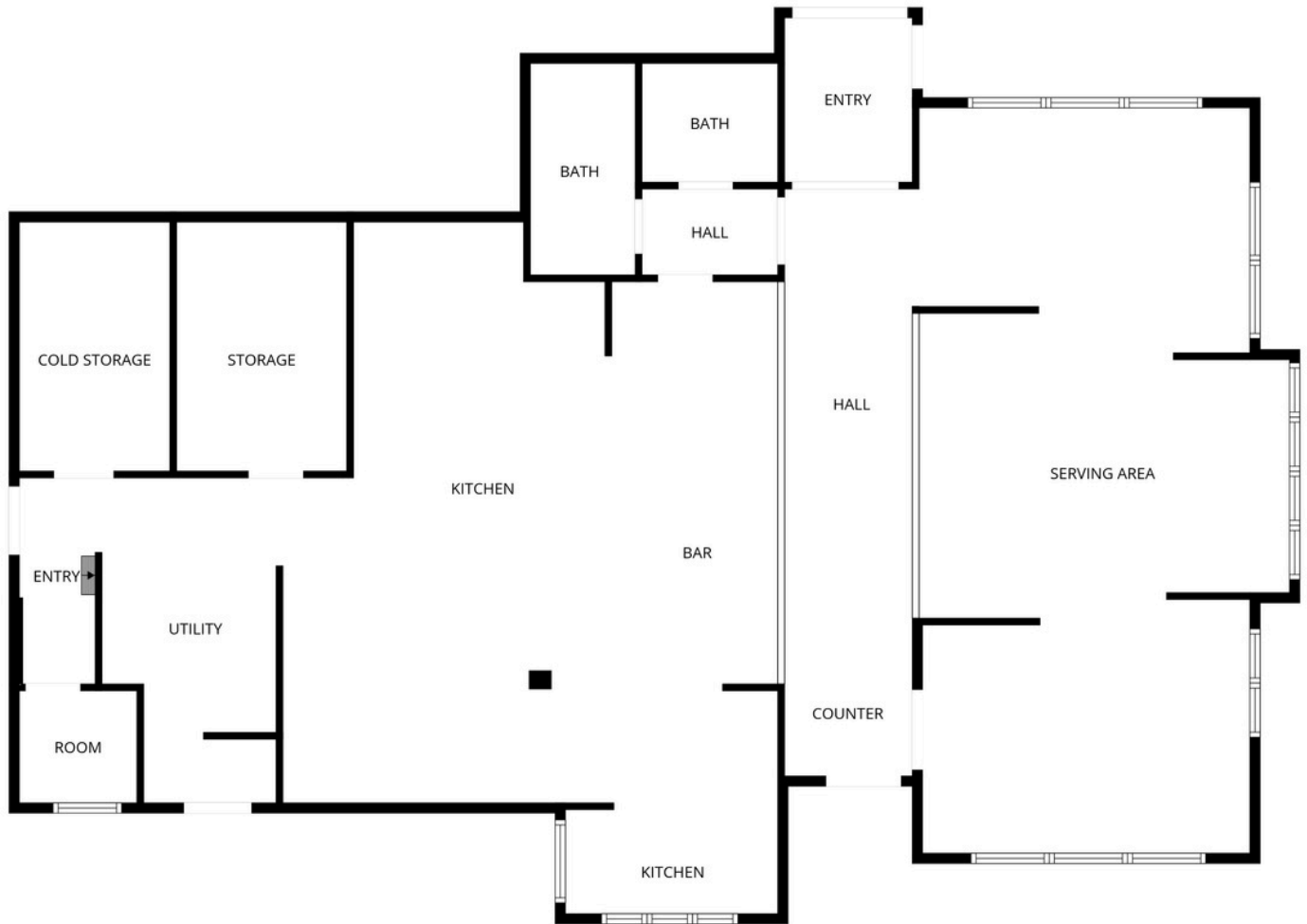
Positioned along a well-traveled corridor, this location offers excellent exposure and accessibility. The property is offered for lease at \$25.00/SF NNN and is well-suited for QSR, fast-casual dining, beverage users, or redevelopment opportunities.





CHRIS COCKERHAM, CPM, GRI - COMMERCIAL MANAGER/BROKER
 F.C. TUCKER/BLOOMINGTON, REALTORS®
 COCKERHAM COMMERCIAL REAL ESTATE & CONSULTING
 487 S. CLARIZZ BLVD. BLOOMINGTON, IN 47401
 DIRECT: (812) 330-7568 - CHRIS@COCKERHAM.US
 WWW.COCKERHAMCOMMERCIAL.COM





FLOOR PLAN CREATED BY CUBICASA APP. MEASUREMENTS DEEMED HIGHLY RELIABLE BUT NOT GUARANTEED.



CHRIS COCKERHAM, CPM, GRI - COMMERCIAL MANAGER/BROKER
 F.C. TUCKER/BLOOMINGTON, REALTORS®
 COCKERHAM COMMERCIAL REAL ESTATE & CONSULTING
 487 S. CLARIZZ BLVD. BLOOMINGTON, IN 47401
 DIRECT: (812) 330-7568 - CHRIS@COCKERHAM.US
 WWW.COCKERHAMCOMMERCIAL.COM



WWW.COCKERHAMCOMMERCIAL.COM
 (812) 340-3083

