

# *“Mid-Century Modern” Office Suites*

## **1400 Spring Street**

### **Silver Spring, Maryland 20910**

#### **Building Size:**

**71,778 SF**

#### **Available Space:**

##### **Suite/Floor R.S.F.**

<b>200/2<sup>nd</sup></b>	<b>3,485</b>	} <b>11,147 R.S.F.</b>
<b>250/2<sup>nd</sup></b>	<b>7,662</b>	
<b>301/3<sup>rd</sup></b>	<b>1,439</b>	
<b>305/3<sup>rd</sup></b>	<b>1,504</b>	
<b>330/3<sup>rd</sup></b>	<b>2,150</b>	
<b>500/5<sup>th</sup></b>	<b>5,033</b>	



#### **Building Features:**

- Renovated lobby, restrooms and common area
- Excellent window line facing park
- Adjacent to deli and banking; short walk to Metro, hotels, shops and restaurants
- Downtown Silver Spring location with convenient access to Metro, I-495, and Washington, DC

*For more information or to  
schedule a tour, please call:*

**Bill Montrose**

[wmontrose@amrcommercial.com](mailto:wmontrose@amrcommercial.com)

**Mark Rittenberg**

[mark@amrcommercial.com](mailto:mark@amrcommercial.com)

**301.961.9696**

Although all information furnished is from sources we deem reliable, such information has not been verified and no express representation is made, nor is any to be implied, as to the accuracy thereof, and it is submitted subject to errors, omissions, changes of price/rental or other conditions prior to sale or lease, and subject to withdrawal without notice.



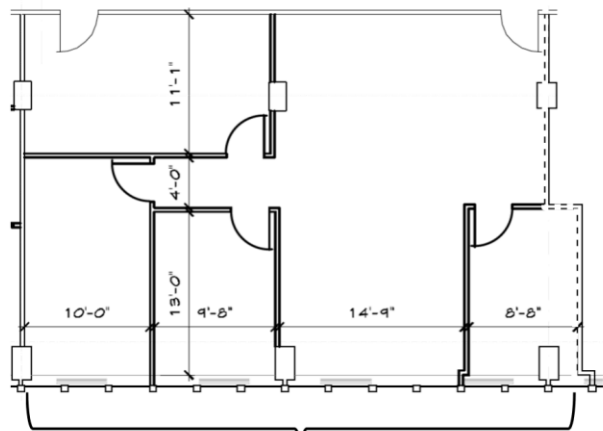
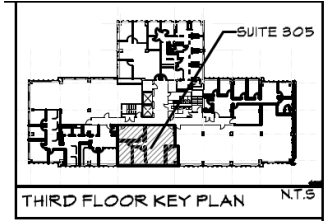
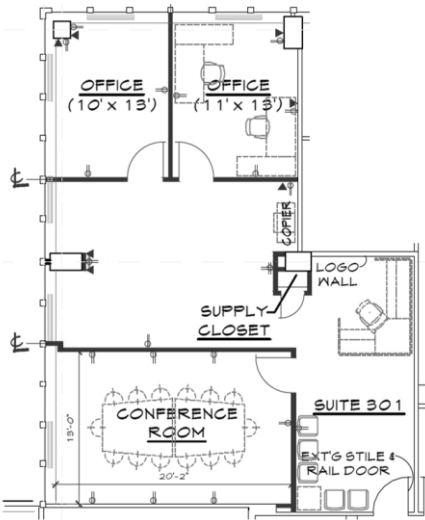
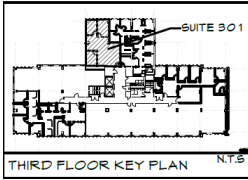
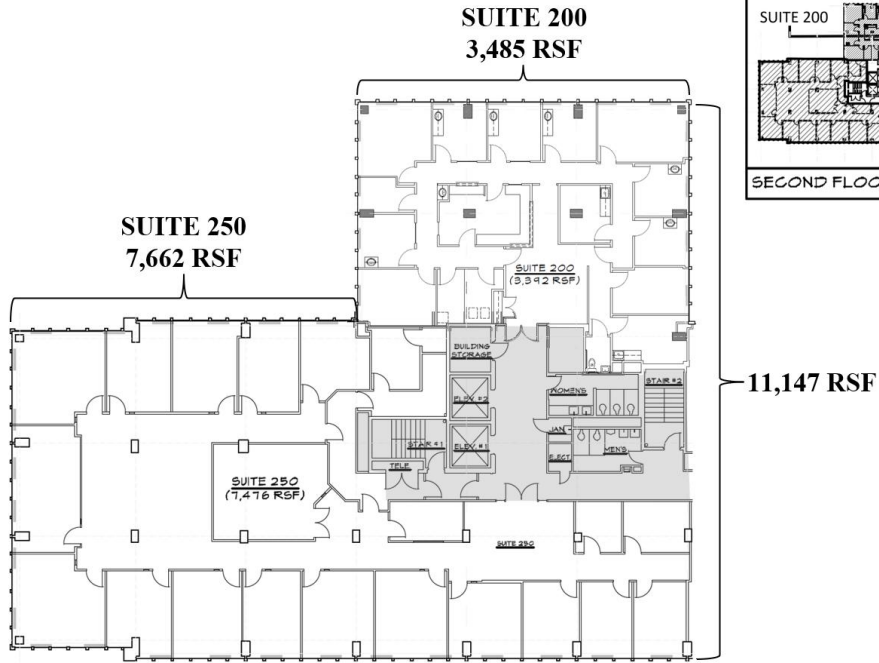
ALEXANDER, MONTROSE, RITTENBERG  
Commercial Real Estate Brokerage  
Est. 1994

*Celebrating*  
**32** Years  
1994-2026

Energy Star Certified



**1400 Spring Street  
Silver Spring, MD 20910**



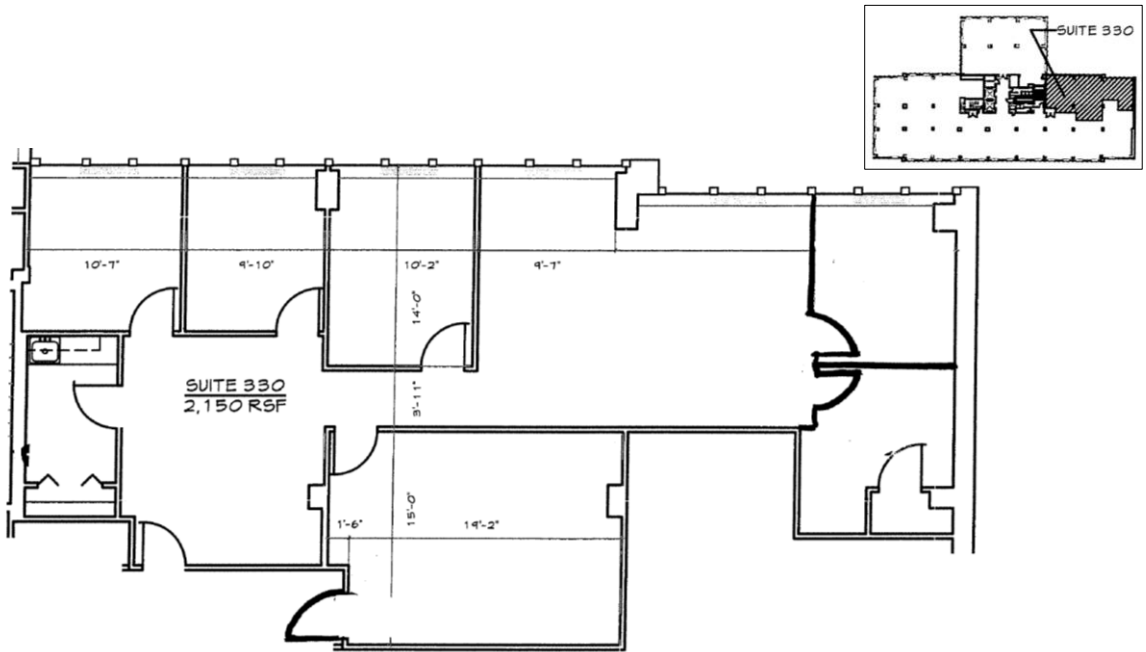
**SUITE 305**  
**1,504 RSF**

NOT TO SCALE | MEASUREMENTS APPROXIMATE

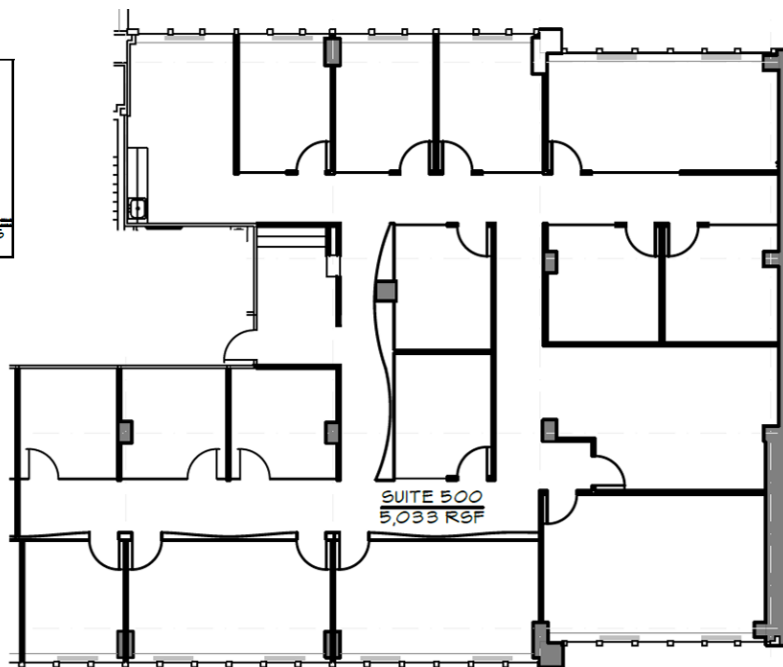
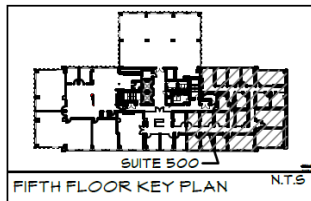
Although all information furnished is from sources we deem reliable, such information has not been verified and no express representation is made, nor is any to be implied, as to the accuracy thereof, and it is submitted subject to errors, omissions, changes of price/rental or other conditions prior to sale or lease, and subject to withdrawal without notice.

1400 Spring Street  
Silver Spring, MD 20910

**SUITE 330**  
**2,150 RSF**



**SUITE 500**  
**5,033 RSF**



**5TH FL. (PARTIAL) - FLOOR PLAN**

Not to Scale

NOT TO SCALE | MEASUREMENTS APPROXIMATE

Although all information furnished is from sources we deem reliable, such information has not been verified and no express representation is made, nor is any to be implied, as to the accuracy thereof, and it is submitted subject to errors, omissions, changes of price/rental or other conditions prior to sale or lease, and subject to withdrawal without notice.