

5100

NEW HORIZONS BLVD.
AMITYVILLE, NY



FOR SALE OR LEASE

5100 New Horizons Blvd., Amityville, NY



5100
NEW HORIZONS BLVD.
AMITYVILLE, NY

Property specifications

- 49,063 SF building including 19,733 SF mezzanine
- 4,558 SF office space
- 1.80 acres
- 3 loading docks
- 2 drive in doors
- 22' clear
- Sewered
- Fully sprinklered
- 53 car parking
- Floor drains throughout
- 1,200 amps @ 480V & 1,600 amps @ 208V
- 3,000 lb freight elevator
- Former food processing plant

Highlights

- Western Suffolk location
- Town of Babylon IDA benefits possible for qualified businesses
- Situated in the New Horizons Business Center



Sale price: \$8,000,000
Rental rate: By proposal

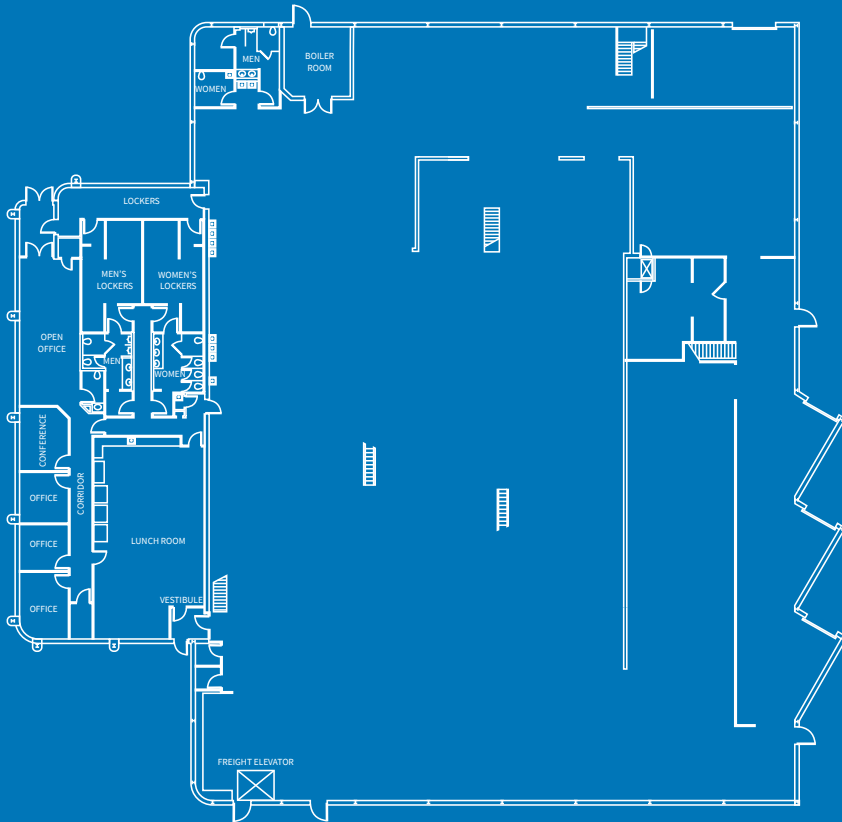


PROPERTY SPECIFICATIONS

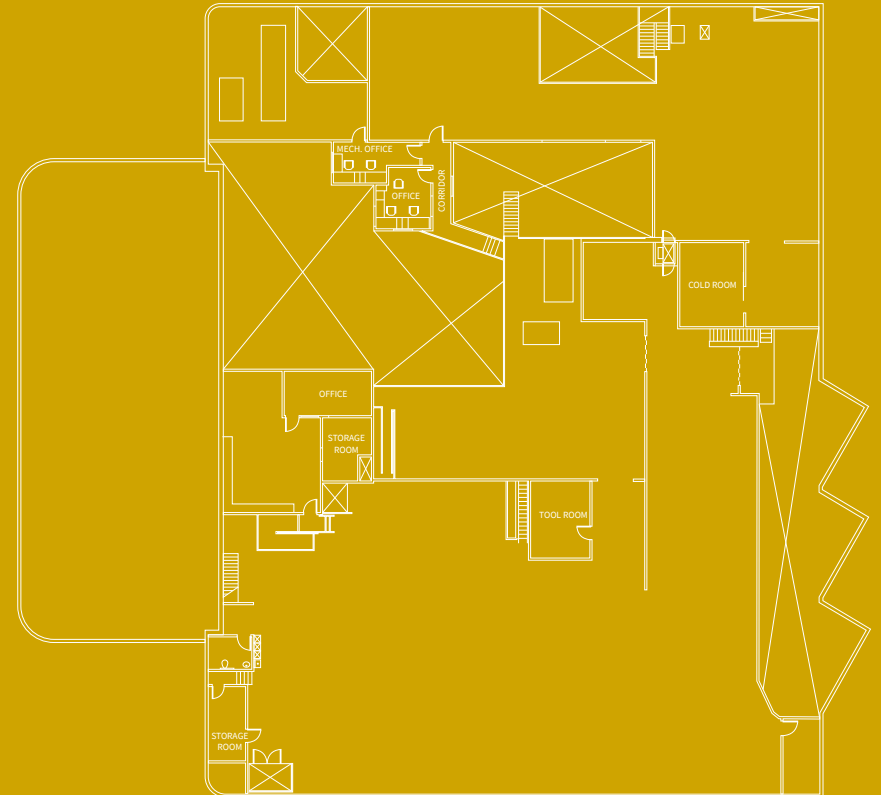


5100
NEW HORIZONS BLVD.
AMITYVILLE, NY

Ground Floor



Mezzanine



5100

NEW HORIZONS BLVD.
AMITYVILLE, NY

LOCATION OVERVIEW

Key distances

1.1 Miles
to Sunrise
Highway

2.3 Miles
to Southern
State Parkway

2.5 Miles
to NY RT 110

3.0 Miles
to LIRR
Amityville

5.2 Miles
to I-495

24.9 Miles
to JFK Airport

Exclusive brokers

Max Omstrom

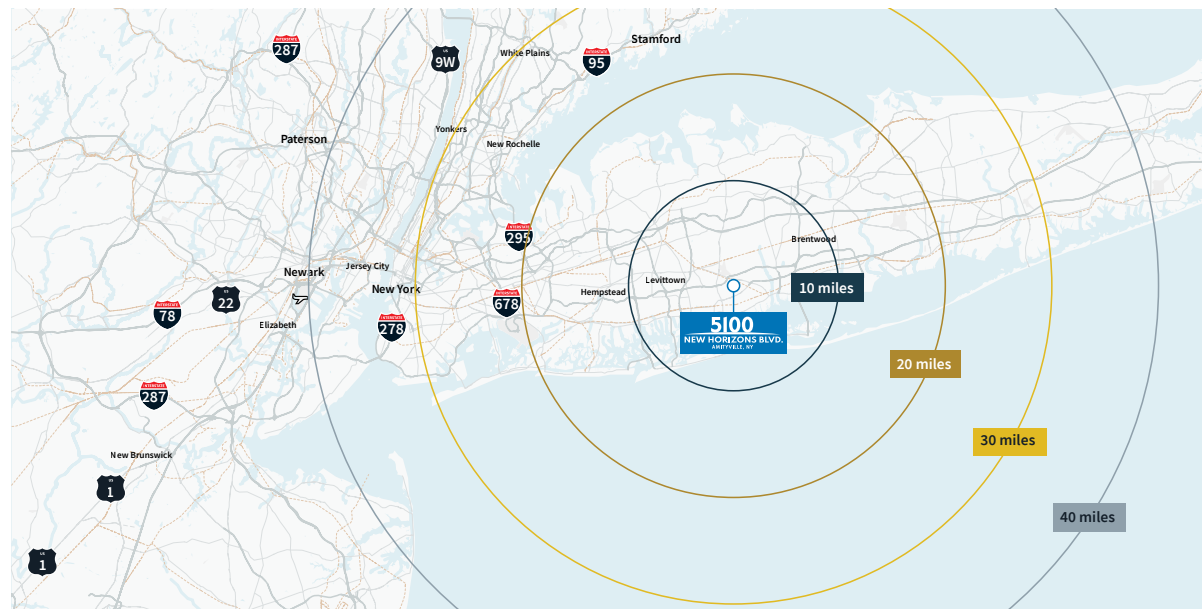
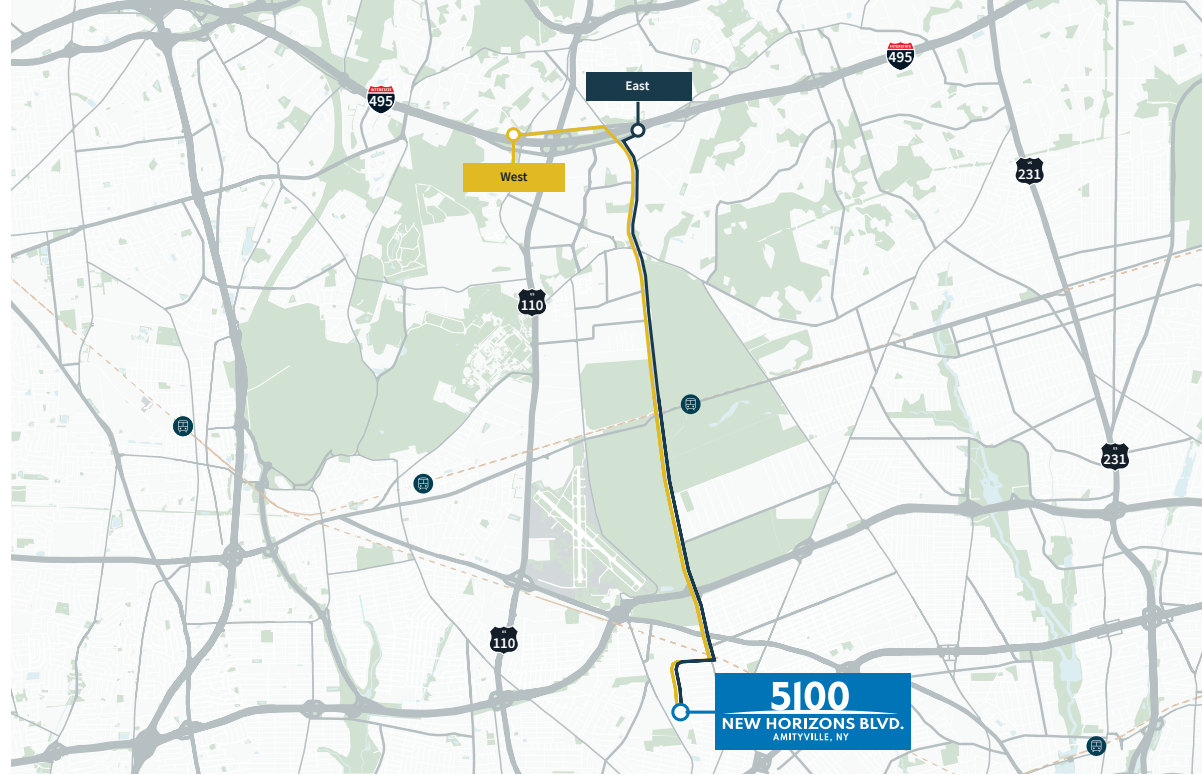
+1 631 962 2504

max.omstrom@jll.com

Andrew Gonzalez

+1 631 962 7383

andrew.gonzalez@jll.com



Although information has been obtained from sources deemed reliable, neither Owner nor JLL makes any guarantees, warranties or representations, express or implied, as to the completeness or accuracy as to the information contained herein. Any projections, opinions, assumptions or estimates used are for example only. There may be differences between projected and actual results, and those differences may be material. The Property may be withdrawn without notice. Neither Owner nor JLL accepts any liability for any loss or damage suffered by any party resulting from reliance on this information. If the recipient of this information has signed a confidentiality agreement regarding this matter, this information is subject to the terms of that agreement. ©2024 Jones Lang LaSalle IP, Inc. All rights reserved.

