

270 BRIDGEPOINT DRIVE

MINNEAPOLIS/SAINT PAUL
SOUTH CENTRAL

270 Bridgepoint Drive
South Saint Paul, MN 55075



FOR LEASE

124,800 SF



LEASED BY

CBRE

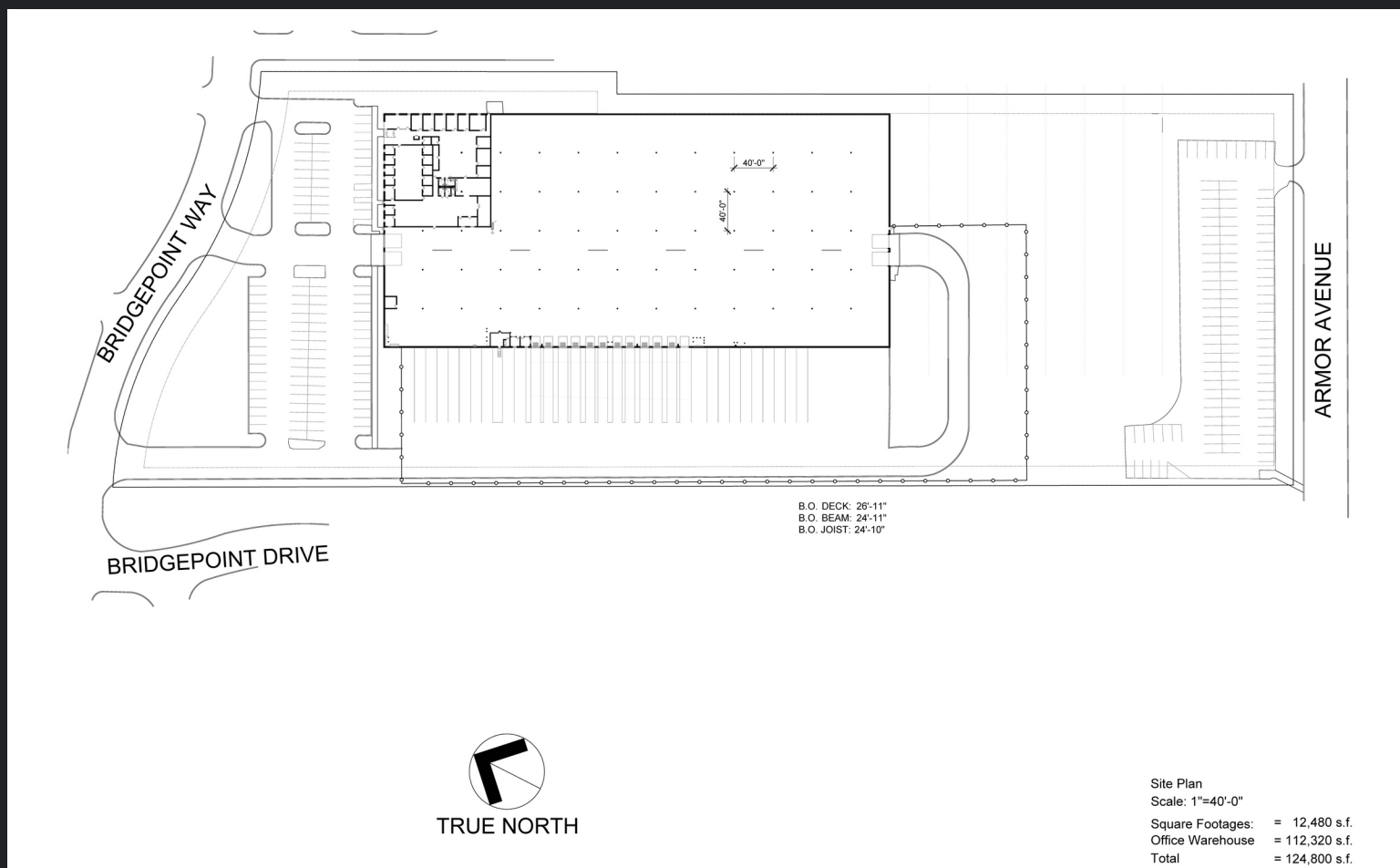
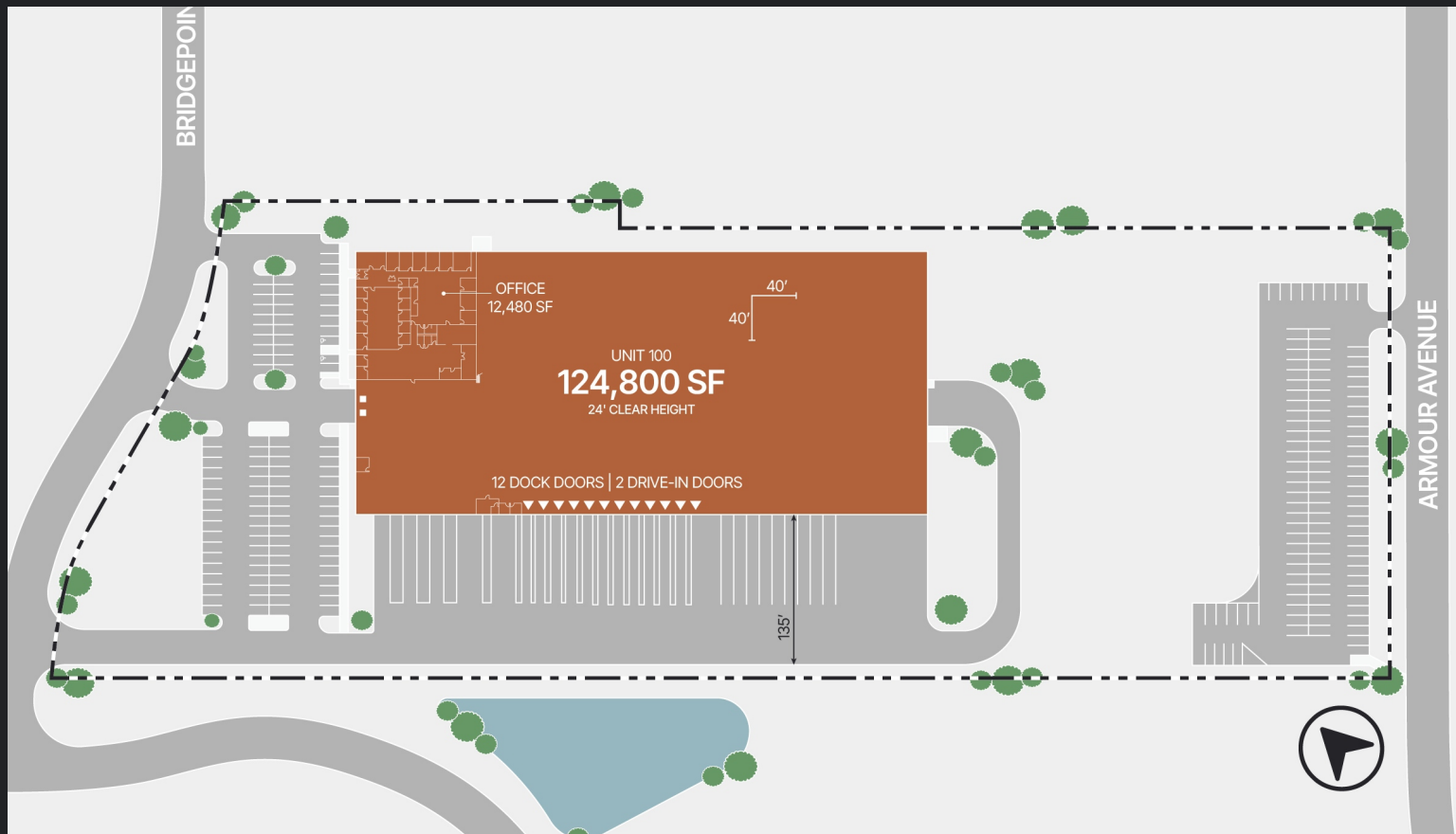


Property Features

Total SF	124,800 SF
Office SF	12,480 SF
Warehouse SF	112,320 SF
Acres	10.72
Clear Height	24'
Loading	12 Docks, 2 Drive-ins
Columns	40 x 40
Parking	150 spaces
Sprinkler	ESFR
Electrical	1,200 amp 277/480 volt 3
Rates	Negotiable
Tax & CAM	\$3.18

Property Highlights

- Available 5/1/2026
- Excellent access to I-494
- Infill location
- Building is expandable by 67,000 SF
- Potential outside storage



CONTACT INFORMATION

270 Bridgepoint Drive
South Saint Paul, MN 55075

JEFF PRZYTARSKI

jeff.przytarski@cbre.com

+1 952 924 4895

SAM MANKE

sam.manke@cbre.com

+1 763 398 9047

This is not an offer or acceptance of an offer to lease space. A lease will only be offered or made in a written agreement signed by landlord. No representation or warranty of any kind is made by landlord unless set forth in a written definitive lease executed by the landlord.



LEASED BY

CBRE