

**FOR SUBLEASE**



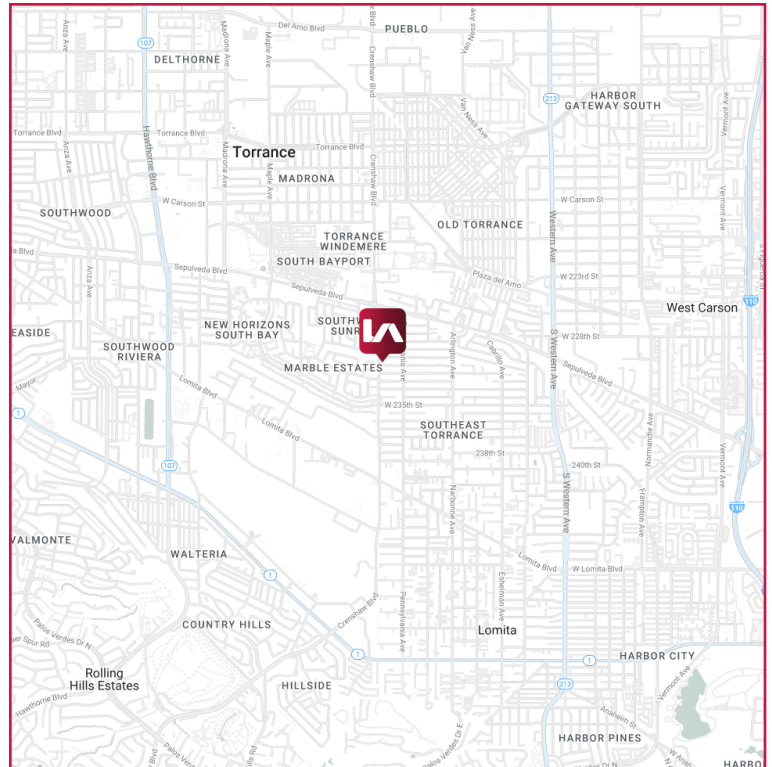
**PRICE**

**SUITE 205 (±1,175 RSF) \$3,407.50 / MO**

(Currently Occupied as MED SPA)

**PROPERTY DETAILS**

- Central Torrance Location
- Highly Improved Existing Medical Space w/ Multiple, Exam Rooms, Doctor's Office and Waiting Area, Private Restroom, Kitchenette
- Ready For Immediate Occupancy
- Minutes to All Major Hospitals (Torrance Memorial, Harbor UCLA, Kaiser, and Little Company)
- Easy Access to 405, 110, and 91 Freeways
- High Traffic Counts on Crenshaw Blvd (Approximately 41,926 Cars Per Day)
- Close Proximity to Palos Verdes, Beaches, Restaurants, Del Amo Fashion Center, and More!



**LOCAL EXPERTISE. INTERNATIONAL REACH. WORLD CLASS.**

**TOM TORABI**

Principal | DRE LIC 00936845  
e ttorabi@leelalb.com  
p 310.965.1754

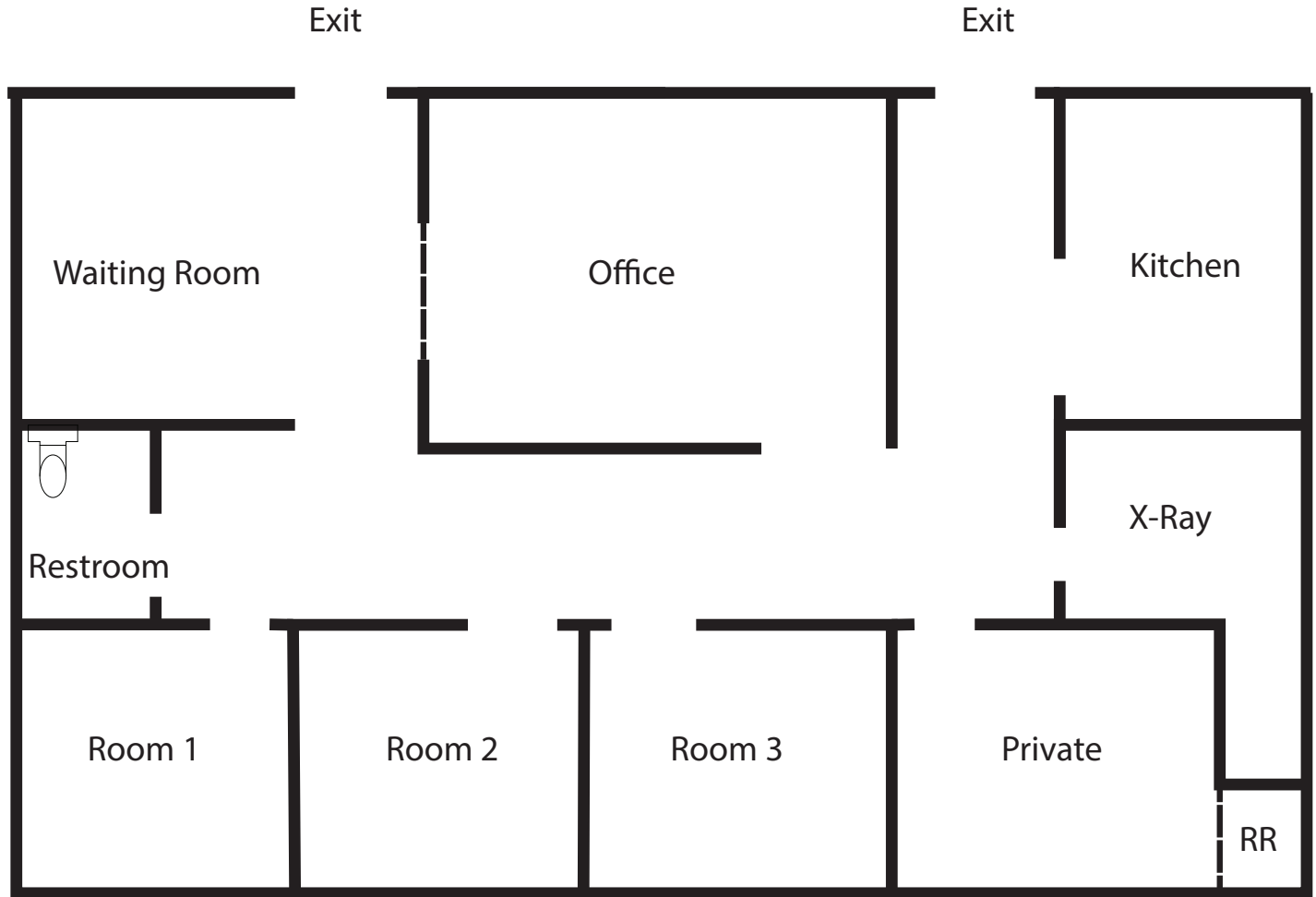
**CONNECT WITH US ON OUR SOCIALS!**

- www.lee-associates.com
- @leeassociateslalb
- @leeassociateslalb
- @LeeAssociatesLA

- 21250 Hawthorne Blvd, Suite 700, Torrance, CA 90503
- Tel: +1 (310) 768-8800  
Fax: +1 (310) 768-8978

**FLOOR PLAN**

Suite 205  
S.F. : 1,175RSF







\*plan not to scale


LOCAL EXPERTISE. INTERNATIONAL REACH. WORLD CLASS.


**TOM TORABI**

Principal | DRE LIC 00936845  
e [ttorabi@leelalb.com](mailto:ttorabi@leelalb.com)  
p 310.965.1754

CONNECT WITH US ON OUR SOCIALS!

 [www.lee-associates.com](http://www.lee-associates.com)  [@leeassociateslalb](https://www.facebook.com/leeassociateslalb)  
 [@leeassociateslalb](https://www.instagram.com/leeassociateslalb)  [@LeeAssociatesLA](https://twitter.com/LeeAssociatesLA)

 21250 Hawthorne Blvd, Suite 700,  
Torrance, CA 90503

 Tel: +1 (310) 768-8800  
Fax: +1 (310) 768-8978